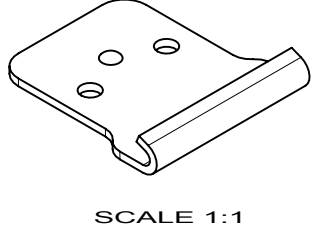
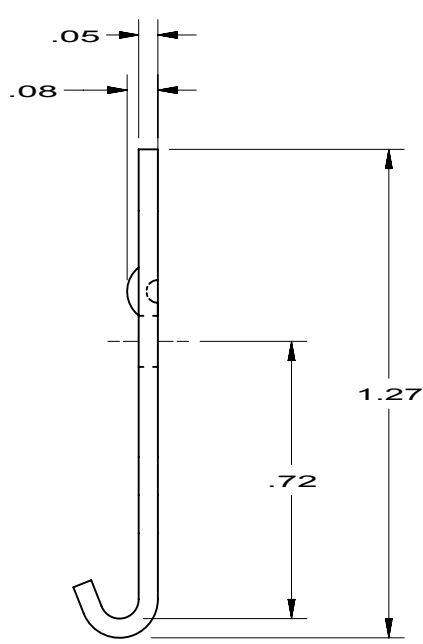
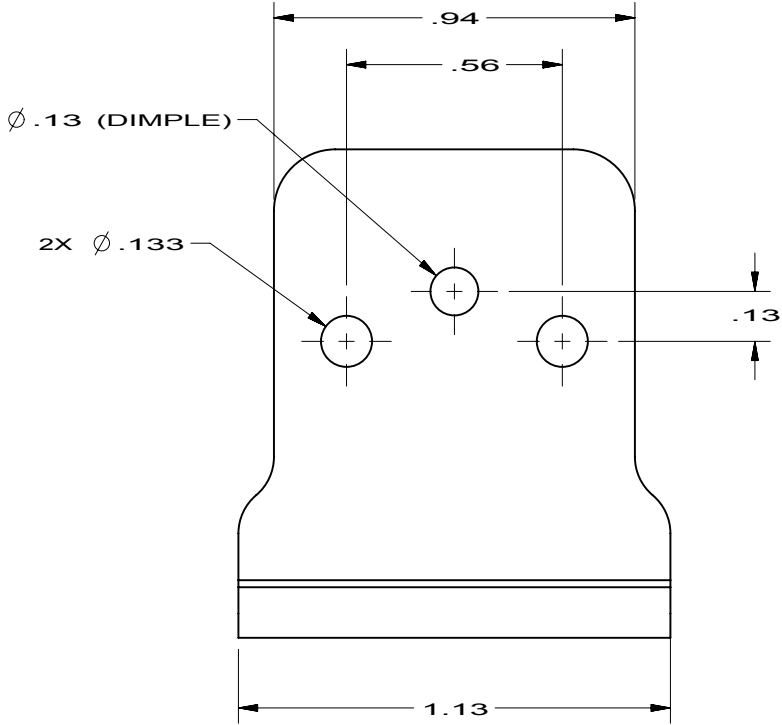


REVISION HISTORY			
REV	DATE	BY	DESCRIPTION
G	26JUL2011	ASM	PRN: P2011-0961



	K3-2696-67	KEEPER	CARBON STEEL	ZINC NICKEL ALLOY, PLUS BLACK CHROMATE
	K3-2696-82	KEEPER	CARBON STEEL	RACK BLACK ZINC
	K3-2696-80	KEEPER	CARBON STEEL	ZINC COBALT PLATE, PLUS BLACK CHROMATE
	K3-2696-69	KEEPER	CARBON STEEL	BLACK E-COAT
	K3-2696-63	KEEPER	300 SERIES STAINLESS STEEL	BLACK OXIDE
	K3-2696-52	KEEPER	300 SERIES STAINLESS STEEL	NATURAL
	K3-2696-12	KEEPER	CARBON STEEL	ZINC PLATE, OLIVE CHROMATE DIP
	K3-2696-08	KEEPER	CARBON STEEL	ZINC PLATE, YELLOW CHROMATE DIP
	K3-2696-07	KEEPER	CARBON STEEL	ZINC PLATE, BRIGHT CHROMATE DIP
NO.	SOUTHCO PART NUMBER	TYPE OF COMPONENT	MATERIAL	FINISH

THIRD ANGLE PROJECTION					 CONNECT CREATE INNOVATE		
INCHES [MM]		TOLERANCES UNLESS OTHERWISE NOTED  ALL DIMENSIONS WITHOUT TOLERANCES ARE FOR REFERENCE ONLY.			DESCRIPTION  <b>K3 KEEPER PLATE</b>		
SURFACE AREA	XXXXXXmm <sup>2</sup>						
VOLUME	XXXXXXmm <sup>3</sup>						
<b>PROPRIETARY ITEM</b> EXCEPT FOR USES EXPRESSLY GRANTED IN WRITING, INFORMATION DISCLOSED HEREON IS CONFIDENTIAL AND ALL RIGHTS, PATENT AND OTHERWISE, ARE RESERVED BY SOUTHCO, INC.		PER ASME Y14.5M-1994			SIZE	SYSTEM	DWG NO.
					A	NX	J-K3-2696
					DRAWN BY BWP	DATE 14JUL1992	SCALE 2:1
							SHEET 1 OF 1