

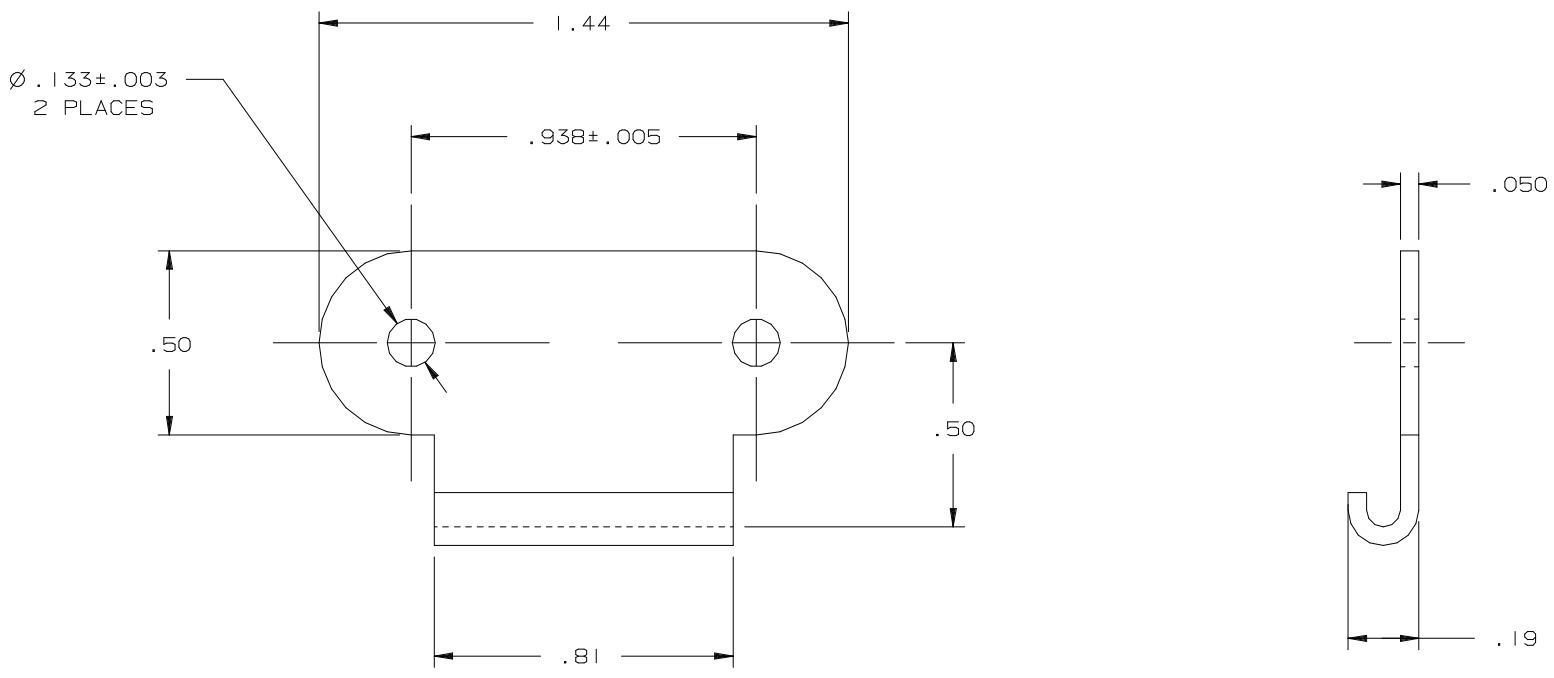


KEEPER PLATE # 3 LINK LOCK

DATE	DRAWN	CHKD	SCALE	DRAWING NUMBER
14 JUL 92	BWP		2 : 1	J-K3-0696

REV.	DATE	BY-CHKD	REVISIONS	NUMBER	MATERIAL	FINISH	NUMBER	MATERIAL	FINISH
A	16 FEB 96	CHW	PRN: K3-108	K3-0696-00	CARBON STEEL	NONE	K3-0696-82	CARBON STEEL	SEE NOTE D
B	22 APR 98	ESK	PRN: K3-220	K3-0696-07	CARBON STEEL	SEE NOTE A			
				K3-0696-08	CARBON STEEL	SEE NOTE B			
				K3-0696-12	CARBON STEEL	SEE NOTE C			
				K3-0696-52	STAINLESS STEEL	NATURAL			
				K3-0696-63	STAINLESS STEEL	SEE NOTE E			

- NOTES:
- A - ZINC PLATE, BRIGHT CHROMATE DIP.
 - B - ZINC PLATE, YELLOW CHROMATE DIP.
 - C - ZINC PLATE, OLIVE DRAB CHROMATE DIP.
 - D - NICKEL PLATE PLUS ZINC, BLACK CHROMATE.
 - E - BLACK OXIDE PLUS WAX.



FORMAT A | MAR 94

PROPRIETARY ITEM - EXCEPT FOR USES EXPRESSLY GRANTED IN WRITING
INFORMATION DISCLOSED HEREON IS CONFIDENTIAL AND ALL RIGHTS PATENT
AND OTHERWISE ARE RESERVED BY SOUTHCO, INC.

DIMENSIONS
ARE IN
INCHES

DIMENSIONS WITHOUT TOLERANCES
ARE FOR REFERENCE ONLY

DRAWING NUMBER
J-K3-0696