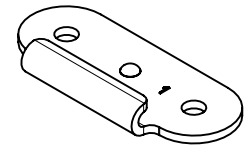
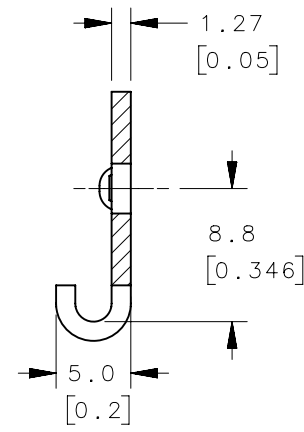
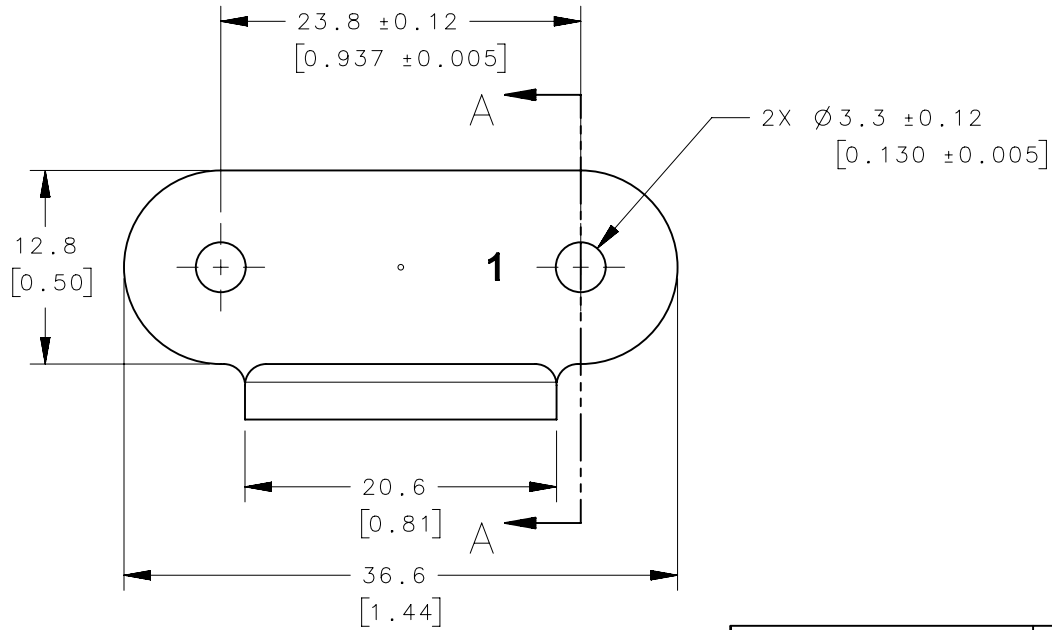


REVISION HISTORY			
REV	DATE	BY	DESCRIPTION
G	04JUN2009	ACH/MJS	PRN: P2009-0661



SCALE 1:1

SECTION A-A

SOUTHCO PART NUMBER	MATERIAL	FINISH
K3-0334-89	STEEL	BLACK E-COAT PLUS BLACK POWDER COAT
K3-0334-82	STEEL	NICKEL PLATE PLUS ZINC, BLACK CHROMATE
K3-0334-70	STAINLESS STEEL	ZINC BLACK ALLOY, BLACK CHROMATE
K3-0334-69	STEEL	E-COAT, BLACK
K3-0334-66	STEEL	E-COAT, BLACK
K3-0334-63	STAINLESS STEEL	BLACK OXIDE PLUS SEALER
K3-0334-55	STAINLESS STEEL	BLACK OXIDE
K3-0334-52	STAINLESS STEEL	NATURAL
K3-0334-49	STEEL	BRIGHT CHROME
K3-0334-46	STEEL	BRIGHT NICKEL PLATE
K3-0334-44	STEEL	BRIGHT NICKEL PLATE
K3-0334-12	STEEL	ZINC PLATE, OLIVE DRAB, CHROMATE DIP
K3-0334-09	STEEL	ZINC PLATE, BLACK CHROMATE DIP
K3-0334-08	STEEL	ZINC PLATE, YELLOW, CHROMATE DIP
K3-0334-07	STEEL	ZINC PLATE, BRIGHT CHROMATE DIP
K3-0334-00	STEEL	NATURAL

THIRD ANGLE PROJECTION		 CONNECT • CREATE • INNOVATE	
MILLIMETERS [IN]			
SURFACE AREA XXXXXmm ²		DESCRIPTION K3 KEEPER PLATE	
VOLUME XXXXXmm ³		SIZE A4 SYSTEM NX DWG NO. J-K3-0334	
PROPRIETARY ITEM <small>EXCEPT FOR USES EXPRESSLY GRANTED IN WRITING, INFORMATION DISCLOSED HEREON IS CONFIDENTIAL AND ALL RIGHTS, PATENT AND OTHERWISE, ARE RESERVED BY SOUTHCO, INC.</small>		PER ASME Y14.5M-1994	
		DRAWN BY PEK DATE 02JAN1992 SCALE 2:1 SHEET 1 OF 1	