

SHELL  
SCREW (-P8 LENGTH SHOWN)

PART NUMBER	SCREW LENGTH "L"	"P2" DIMENSION
F5-M4-P2	9.0	6.0
F5-M4-P4	10.0	7.0
F5-M4-P6	11.0	8.0
F5-M4-P8	12.0	9.0

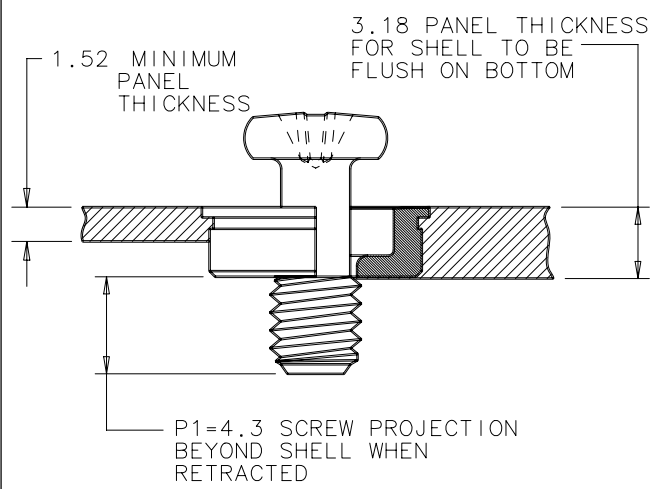
**MATERIAL & FINISH:**

SCREW : 430 STAINLESS STEEL  
PASSIVATED.

SHELL : 303 STAINLESS STEEL  
PASSIVATED

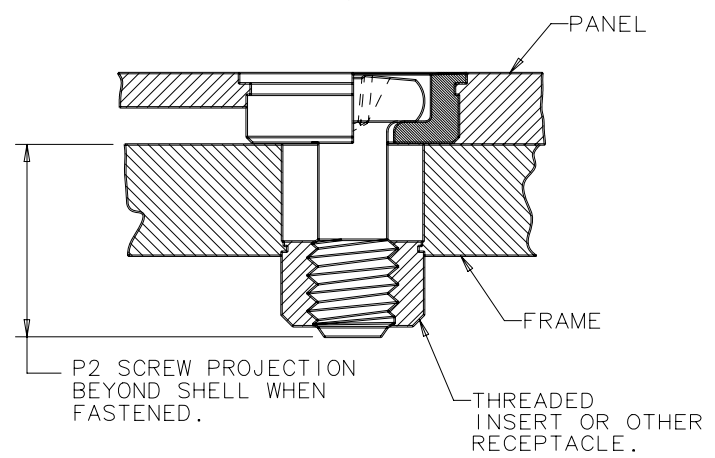
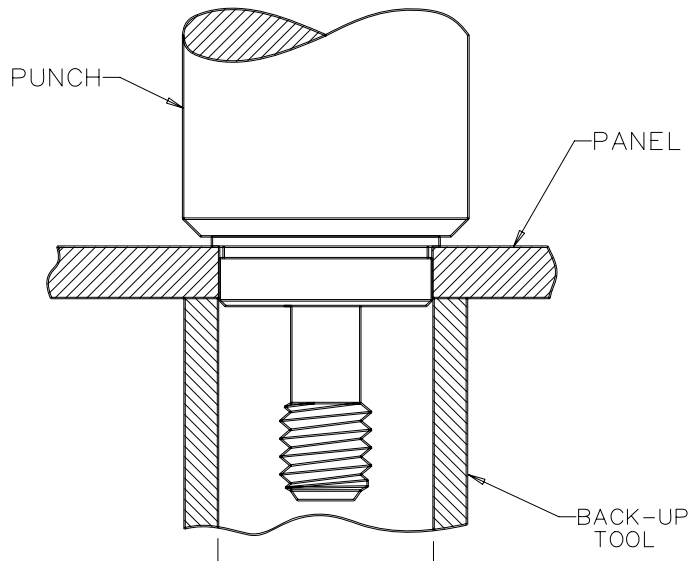
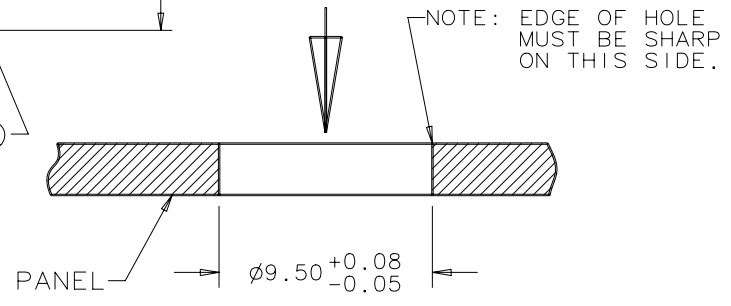
**NOTE:** SHIPPED ASSEMBLED, BULK.  
FOR ASSEMBLIES PACKAGED 50 PER  
BOX, ADD SUFFIX "-P" TO THE  
PART NUMBER.

A GENERAL GUIDE:  
FOR USE IN MOST ALUMINUMS OR IN  
LOW-CARBON STEELS THAT ARE 1/4 HARD  
OR SOFTER.



**SCREW  
RETRACTED**

**NOTE:** SCREWS WILL  
RADIALLY FLOAT  
0.6 TOTAL MOVEMENT



**SCREW  
FASTENED**

ALL DIMENSIONS ARE IN MILLIMETERS.

REVN A 9-10-90 HAR PRN F5-24; CHANGED PART & DWG NOS  
REVN B 10-25-90 HAR PRN F5-26  
REVN C 3-4-91 JAD PRN F5-29  
REVN D 12 JAN 93 KPL PRN:LS-1-03  
REVN E 23NOV2003 CS/MUS PRN: 1 0005-1034  
REVN F 23SEP2008 VSK/VPR PRN: P2006-1273

FORMATAR 5/89  
PROPRIETARY ITEM - EXCEPT FOR USES EXPRESSLY GRANTED IN WRITING  
INFORMATION DISCLOSED HEREON IS CONFIDENTIAL AND ALL RIGHTS PATENT  
AND OTHERWISE ARE RESERVED BY SOUTHCO, INC.