

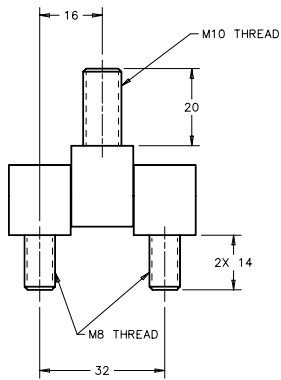
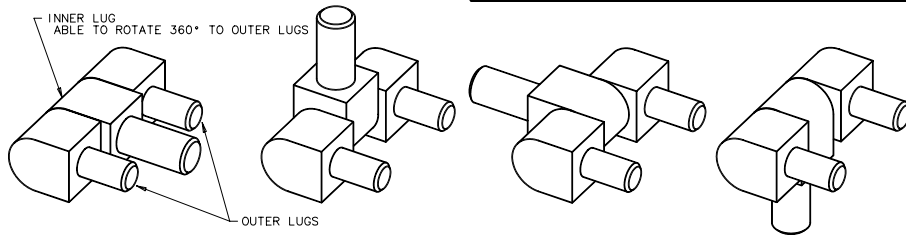


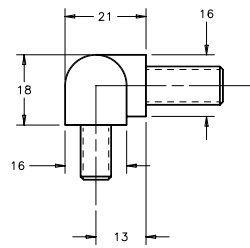
NOTES:
 A. COSMETIC SPECIFICATION:
 ALL SURFACES ARE TO CONFORM TO A CLASS *D* DESIGNATION
 AS DESCRIBED IN SOUTHCO COSMETIC SPECIFICATION S-121-01.
 B. PACKAGING: TRAY PACKAGED SHIPPED (50) PER BOX.

southco		PROPRIETARY ITEM - EXCEPT FOR USES EXPRESSLY GRANTED IN WRITING, INFORMATION DISCLOSED HEREON IS CONFIDENTIAL AND ALL RIGHTS, PATENT AND OTHERWISE ARE RESERVED BY SOUTHCO, INC.		EH IN-LINE HINGE		DATE	DRAWN	CHKD	SCALE	DRAWING NUMBER
REV	DATE	DRAWN/CHKD	DESCRIPTION	ITEM	PART NUMBER	MATERIAL	FINISH			
A	12JUL2005	AJH/RLR	PRN: P2005-0853	ASSEMBLY	EH-8R-5G-38	-	CHROME PLATED			
				OUTER LUG (2)	-	BRASS	CHROME PLATED			
				INNER LUG	-	BRASS	CHROME PLATED			
				PIN	-	STEEL	ZINC PLATE, BRIGHT CHROMATE			

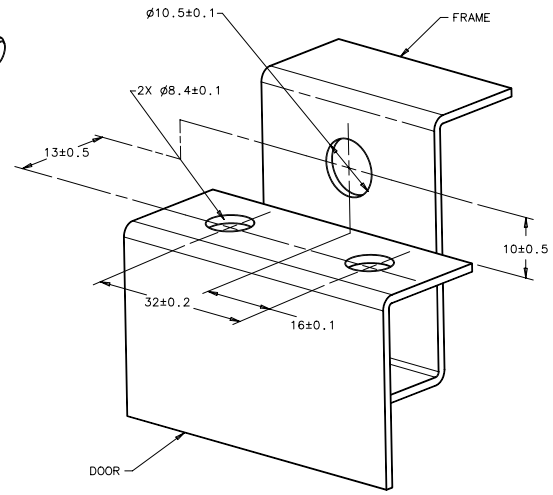
12JUL2005		AJH	1:1	J-EH-8R-5G-38
MILLIMETERS				
ALL DIMENSIONS WITHOUT TOLERANCES ARE FOR REFERENCE ONLY.				
 THIRD ANGLE PROJECTION		 A3 PAPER SIZE		



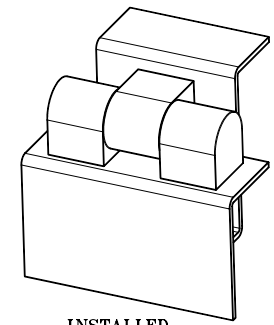
INNER LUG 180° TO OUTER LUGS



INNER LUG 90° TO OUTER LUGS



PANEL PREPARATION
(SCALE 1.5:1)



INSTALLED