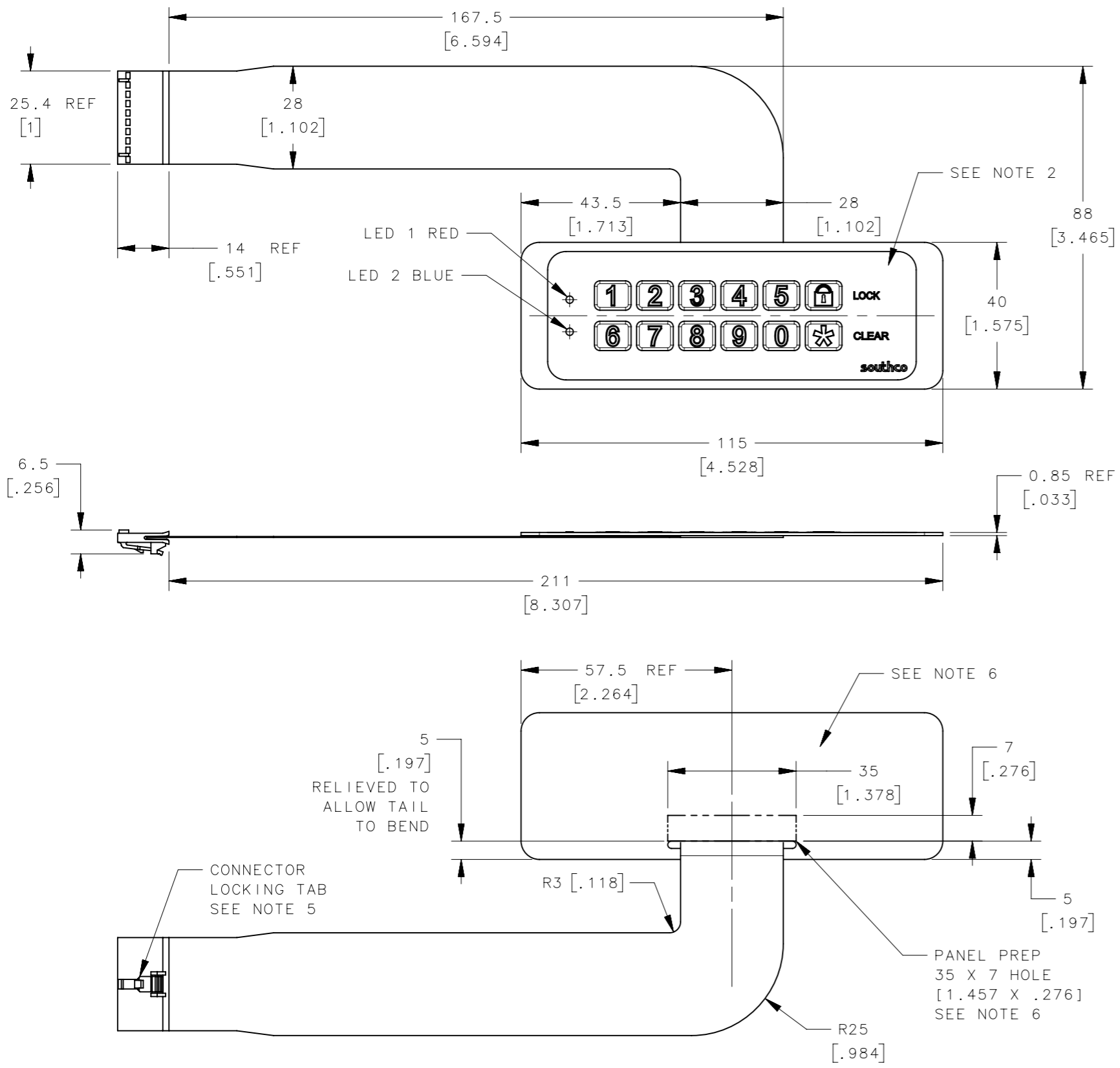


REVISION HISTORY			
REV	DATE	BY	DESCRIPTION
B	11APR2011	ACH/CB	PRN: P2011-0465

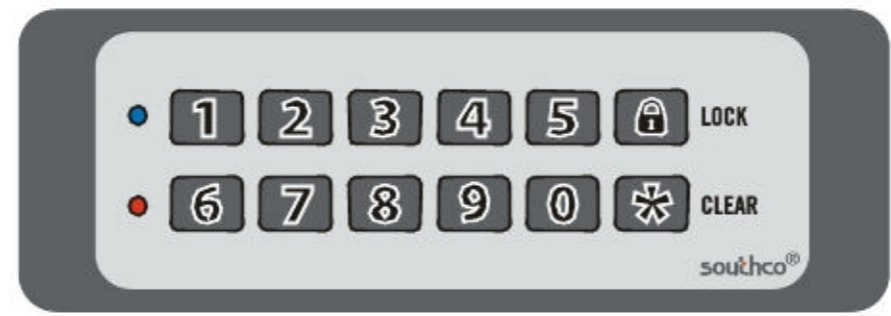


- NOTES:
- THIS MEMBRANE KEYPAD IS INTENDED FOR USE WITH SOUTHCO ACCESS CONTROLLERS. REFER TO CONTROLLER CUSTOMER DRAWING FOR SPECIFIC SYSTEM HOOKUP INFORMATION.
-CUSTOM OVERLAYS AND KEYPAD CONFIGURATIONS ARE AVAILABLE. CONTACT SOUTHCO FOR MORE INFORMATION.
 - OVERLAY MATERIAL: VELVET TEXTURED POLYESTER FILM, AUTOTYPE AUTOTEX V207.
-CHEMICAL RESISTANCE: PER DIN 42 115 TEST METHOD.
RESISTANT TO: ALCOHOLS, DILUTE ACIDS, DILUTE ALKALIS, ESTERS, HYDROCARBONS, KETONES, HOUSEHOLD CLEANING AGENTS.
ADDITIONAL CHEMICAL RESISTANCE INFORMATION AVAILABLE ON REQUEST.
-THE OVERLAY MATERIAL HAS LIMITED LONG TERM RESISTANCE TO UV LIGHT AND THEREFORE IS NOT RECOMMENDED FOR LONG TERM USE OUTDOORS.
 - 12 KEY SWITCHES
-EMBOSSED KEY AREA WITH METAL DOME CONSTRUCTION
250g ACTUATION FORCE DOMES
-KEY LIFE: 1x10⁶ CYCLES PER KEY
OPERATE KEYS WITH FINGER PRESSURE ONLY. AVOID USING SHARP OR POINTED OBJECTS TO OPERATE KEYS AS THIS MAY DAMAGE THE KEYS.
 - 2 SURFACE MOUNT LED'S WITH 2 CLEAR EMBOSSED WINDOWS
-1 RED LED
-1 BLUE LED
 - "L" SHAPED EXTENDED FLEXIBLE CIRCUIT WITH CONNECTOR
-10 PIN FEMALE CONNECTOR: 2.54MM PITCH, WITH LOCK
CONNECTOR P/N: CJT A2550H-10P-A
AVOID REPETITIVE BENDING OF THE FLEX CIRCUIT AS THIS MAY DAMAGE THE CIRCUIT.
 - MOUNTING: PRESSURE SENSITIVE ADHESIVE IS PROVIDED FOR MOUNTING ON ENTIRE BACK SIDE OF MEMBRANE SWITCH ASSEMBLY. ADHESIVE TYPE 3M9471LE.
-PANEL PREPARATION SHOULD INCLUDE A HOLE FOR PASSAGE OF THE FLEXIBLE CIRCUIT WITH THE CONNECTOR HOUSING. SEE DRAWING FOR RECOMMENDED HOLE DIMENSIONS AND LOCATION.
-HOLE PREPARATION FOR CONNECTOR PASSAGE MUST BE FLAT AROUND MOUNTING SURFACE AND FREE OF ANY BURRS OR SHARP EDGES THAT COULD DAMAGE THE FLEX CIRCUIT.
-MOUNTING SURFACE MUST BE CLEAN AND FREE OF OILS AND GREASE. REMOVE PAPER BACKING AND ADHERE MEMBRANE TO FLAT CLEAN AND DRY SURFACE APPLY SUFFICIENT PRESSURE OVER THE SURFACE OF THE MEMBRANE TO ACTIVATE THE ADHESIVE.

EA-KC2-101	KEYPAD ASSEMBLY	SEE NOTES
PART NUMBER	TYPE OF COMPONENT	MATERIAL

THIRD ANGLE PROJECTION				southco [®] CONNECT • CREATE • INNOVATE	
MILLIMETERS [IN]					
TOLERANCES UNLESS OTHERWISE NOTED		DESCRIPTION			
SURFACE AREA XXXXXmm ²		ELECTRONIC ACCESS SOLUTIONS			
VOLUME XXXXXmm ³		HORIZONTAL MEMBRANE KEYPAD ASSEMBLY			
PROPRIETARY ITEM		SIZE A3	SYSTEM NX	DWG NO. J-EA-KC2-101	
EXCEPT FOR USES EXPRESSLY GRANTED IN WRITING, INFORMATION DISCLOSED HEREON IS CONFIDENTIAL AND ALL RIGHTS, PATENT AND OTHERWISE, ARE RESERVED BY SOUTHCO, INC.		PER ASME Y14.5M-1994	DRAWN BY GGG	DATE 10DEC2010	SCALE 0.75:1
				SHEET 1 OF 2	

REVISION HISTORY			
REV	DATE	BY	DESCRIPTION
B	11APR2011	ACH/CB	PRN: P2011-0465



KEYPAD ARTWORK

	THIRD ANGLE PROJECTION	 CONNECT • CREATE • INNOVATE		
	MILLIMETERS [IN]			
SURFACE AREA	XXXXXmm ²	TOLERANCES UNLESS OTHERWISE NOTED		DESCRIPTION
VOLUME	XXXXXmm ³	ALL DIMENSIONS WITHOUT TOLERANCES ARE FOR REFERENCE ONLY.		Electronic Access Solution
PROPRIETARY ITEM				SIZE
EXCEPT FOR USES EXPRESSLY GRANTED IN WRITING, INFORMATION DISCLOSED HEREON IS CONFIDENTIAL AND ALL RIGHTS, PATENT AND OTHERWISE, ARE RESERVED BY SOUTHCO, INC.		PER ASME Y14.5M-1994		A3 NX J-EA-KC2-101
		DRAWN BY	DATE	SCALE
		GGG	10DEC010	1:1
				SHEET 2 OF 2