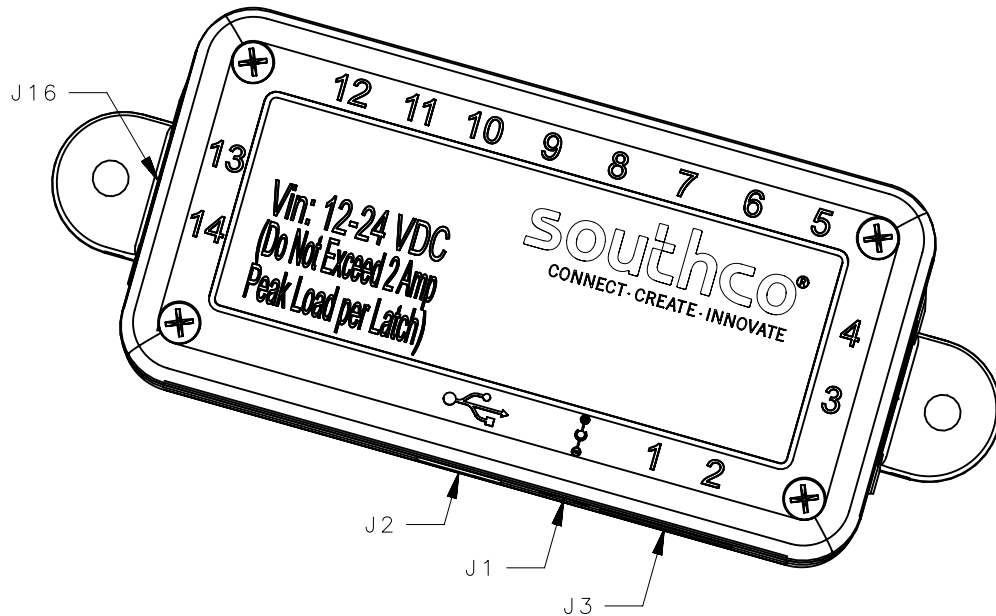


REVISION HISTORY			
REV	DATE	BY	DESCRIPTION
1	20MAR2014	DJK/KAM	PRN:P2014-0558

NOTES:

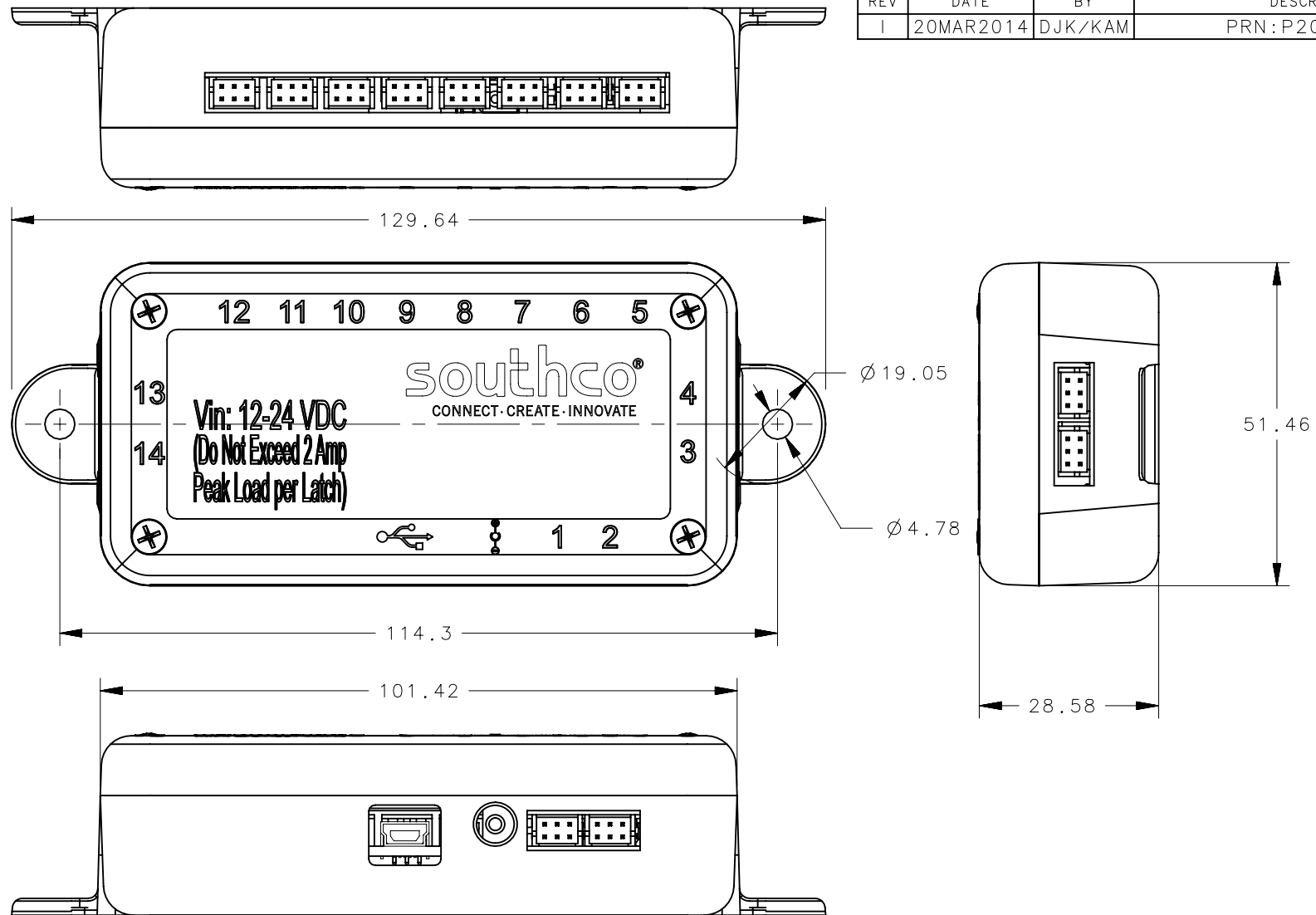
- MATERIALS ARE RoHS COMPLIANT
 - HOUSING- ABS
 - PRINTED CIRCUIT BOARD- FR4
- ELECTRICAL SPECIFICATIONS
 - OPERATING VOLTAGE: 12-24 VDC
 - MAX OUTPUT PER LATCH: 2 AMPS
 - DO NOT EXCEED MAX LATCH VOLTAGE
- J1 POWER CONNECTOR, CUI
CONN PWR JACK 2.0 X 6.0mm, SHIELDED
PART NUMBER: PJ-051A
FOR USE WITH 2.1 X 5.5mm OD MATING CONNECTOR
- J2 CONNECTOR, TYCO, MINI USB
PART NUMBER: 1734035-2
- J3 THRU J16 LATCH CONNECTORS (INDICATED AS 1-14 ON ENCLOSURE)
HIROSE, CONN HEADER 6 POS 2mm RT ANG TIN
PART NUMBER: DF11-6DP-2DS(24)
- ASSEMBLED CONTROLLER IS SEALED IN INDIVIDUAL POLY BAG WITH 1 METER USB CABLE AND OPERATING INSTRUCTIONS (J-EA-A06-001-M).
- POWER SOURCE SHOULD BE SIZED BASED ON THE REQUIREMENTS OF THIS CONTROLLER AND THE CONNECTED LATCH(S).
- MOUNTING HARDWARE NOT PROVIDED- RECOMMENDED M4 OR #6 SCREWS. DO NOT OVER TIGHTEN.

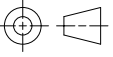



2	1 METER USB CABLE (NOT SHOWN)	N/A	USB CABLE	1
1	J-EA-A06-001-M (NOT SHOWN)	E	OPERATING INSTRUCTIONS	1
-	EA-A06-001	J	USB CONTROLLER	1
NO	PART NUMBER	REVISION	PART NAME	QTY
THIRD ANGLE PROJECTION		 USB ASSEMBLY		
MILLIMETERS [IN]				
TOLERANCES UNLESS OTHERWISE NOTED		DESCRIPTION		
SURFACE AREA		SIZE A4		
VOLUME		SYSTEM NX		
PROPRIETARY ITEM		DWG NO. J-EA-A06-001		
EXCEPT FOR USES EXPRESSLY GRANTED IN WRITING, INFORMATION DISCLOSED HEREON IS CONFIDENTIAL AND ALL RIGHTS, PATENT AND OTHERWISE, ARE RESERVED BY SOUTHCO, INC.		DRAWN BY ZNP		
PER ASME Y14.5M-1994		DATE 10/10/2011		
		SCALE 1:1		
		SHEET 1 OF 2		

REVISION HISTORY

REV	DATE	BY	DESCRIPTION
1	20MAR2014	DJK/KAM	PRN:P2014-0558



	THIRD ANGLE PROJECTION 	 CONNECT · CREATE · INNOVATE			
	MILLIMETERS [IN]				
	TOLERANCES UNLESS OTHERWISE NOTED	DESCRIPTION			
SURFACE AREA	ALL DIMENSIONS WITHOUT TOLERANCES ARE FOR REFERENCE ONLY.	USB ASSEMBLY			
VOLUME		SIZE A4	SYSTEM NX	DWG NO. J-EA-A06-001	
PROPRIETARY ITEM EXCEPT FOR USES EXPRESSLY GRANTED IN WRITING, INFORMATION DISCLOSED HEREON IS CONFIDENTIAL AND ALL RIGHTS, PATENT AND OTHERWISE, ARE RESERVED BY SOUTHCO, INC.	PER ASME Y14.5M-1994	DRAWN BY ZNP	DATE 10/10/2011	SCALE 1:1	SHEET 2 OF 2