

southco			PROPRIETARY ITEM - EXCEPT FOR USES EXPRESSLY GRANTED IN WRITING INFORMATION DISCLOSED HEREON IS CONFIDENTIAL AND ALL RIGHTS PATENT AND OTHERWISE ARE RESERVED BY SOUTHCO, INC.			E5 QUAD LATCH (TOOL SECURED) M22 X 23 HOUSING			DATE	DRAWN	CHKD	SCALE	DRAWING NUMBER
									02JUL2005	MDY		1:1	J-E5-6
REV	DATE	DRAWN/CHKD	DESCRIPTION										
K	23APR2013	CMS/MGG	PRN: P2013-0871										
L	14NOV2014	CMS/MWD	PRN: P2014-2300										
M	13JAN2016	CMS/KH	PRN: P2016-0062										
N	08FEB2016	CMS/MGG	PRN: P2016-0275										
O	22MAR2017	CMS/MWD	PRN: P2017-0683										
P	15MAY2017	CMS/MWD	PRN: P2017-1170										
Q	11SEP2017	CMS/MWD	PRN: P2017-2249										
R	09MAR2018	CMS/MGG	PRN: P2018-0595										

PART NUMBER: E5-6-

WW

X

-

YY


1

ACTUATION STYLE
(SEE BELOW)

CAM TYPE

MILLIMETERS

ALL DIMENSIONS WITHOUT TOLERANCES ARE FOR REFERENCE ONLY.



A3
PAPER
SIZE

SHEET 1 OF 3

NOTES:

- A. SEE SHEET 3 FOR INSTALLATION INSTRUCTIONS.

B. COSMETIC SPECIFICATION: ALL SURFACES ABOVE A-A CONFORM TO A CLASS "B" DESIGNATION AS DESCRIBED IN SOUTHCO COSMETIC SPECIFICATIONS:
S-121-01 FOR X = 2
S-121-03 FOR X = 5 OR X = 6

C. FOR PUSH TO CLOSE CAM ASSEMBLIES,SEE DRAWING J-E5-51-A.

D. HEAD STYLES 08, 14, 15, 19 AND 21 CAN NOT BE USED WITH MATERIAL AND FINISH OPTIONS 24 AND 27.
- MATERIAL AND FINISH:

2 = DIE CAST ZINC, BRIGHT CHROME PLATE.

5 = DIE CAST ZINC, BLACK POWDER COAT.

6 = DIE CAST ZINC, LIGHT GREY POWDER COAT.

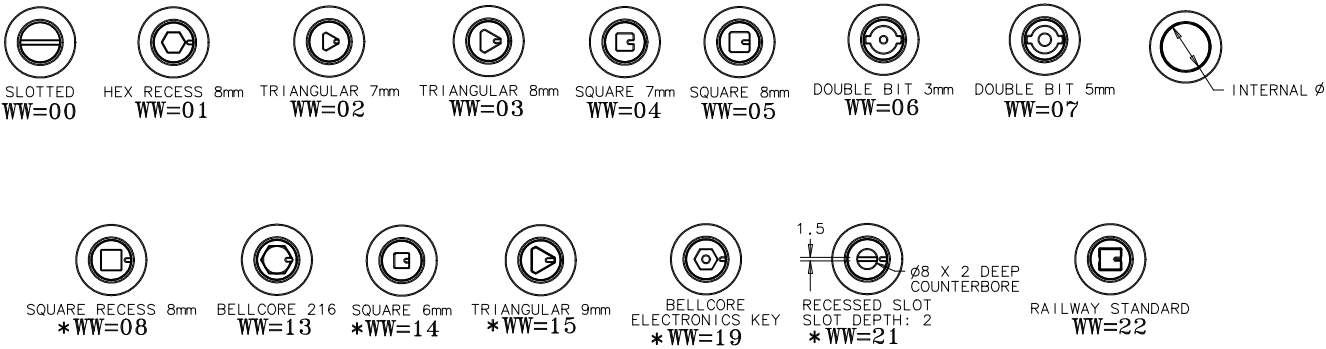
24 = 304 STAINLESS STEEL, PASSIVATED, SEE NOTE D

27 = 316 STAINLESS STEEL, PASSIVATED, SEE NOTE D

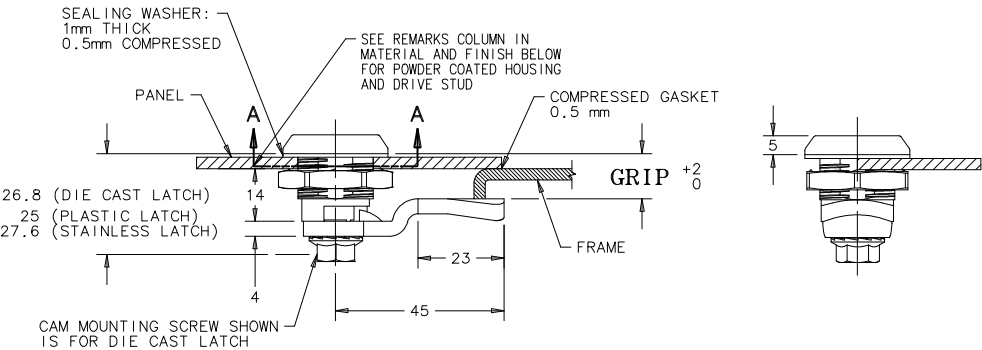
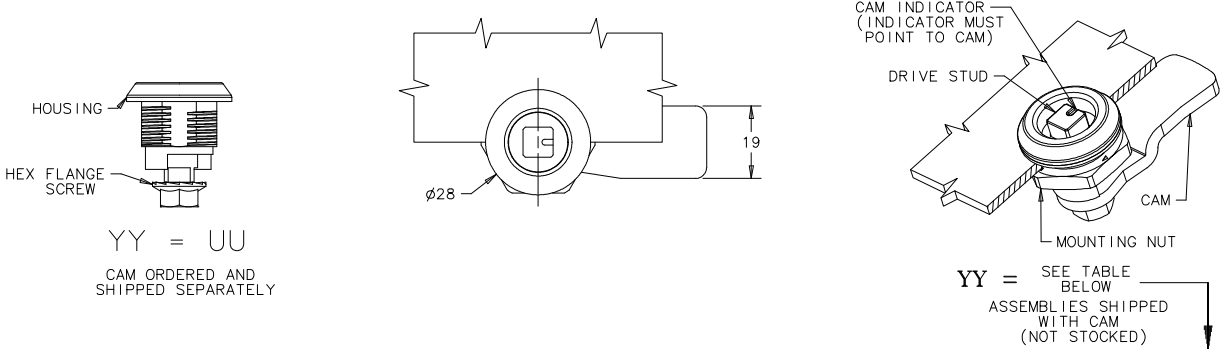
WW ACTUATION STYLES

INTERNALØ: STAINLESS STEEL AND RAILWAY STANDARD TYPES Ø17.5 ALL OTHER TYPES Ø15.9

* SEE NOTE D




YY CAM STYLE



PART NUMBER E5-6-05X-071 SHOWN

YY	GRIP
03	4mm
04	6mm
05	8mm
06	10mm
07	12mm
08	14mm
09	16mm
10	18mm
11	20mm
12	22mm
13	24mm
14	26mm
15	28mm
16	30mm
17	32mm
18	34mm
19	36mm
20	38mm
21	40mm
22	42mm

REV	DATE	DRAWN/CHKD	DESCRIPTION
K	23APR2013	CMS/MGG	PRN: P2013-0871
L	14NOV2014	CMS/MWD	PRN: P2014-2300
M	13JAN2016	CMS/KH	PRN: P2016-0062
N	08FEB2016	CMS/MGG	PRN: P2016-0275
O	22MAR2017	CMS/MWD	PRN: P2017-0683
P	15MAY2017	CMS/MWD	PRN: P2017-1170
Q	11SEP2017	CMS/MWD	PRN: P2017-2249
R	09MAR2018	CMS/MGG	PRN: P2018-0595

MILLIMETERS
ALL DIMENSIONS WITHOUT TOLERANCES ARE FOR REFERENCE ONLY.

THIRD ANGLE PROJECTION
A3 PAPER SIZE
SHEET 2 OF 3

MATERIAL AND FINISH:

DIE CAST ZINC VERSION:

1. HOUSING: DIE CAST ZINC, CHROME PLATED OR BLACK PC
2. DRIVE STUD: DIE CAST ZINC, CHROME PLATED OR BLACK PC
3. CAM: STEEL, ZINC PLATE WITH BRIGHT CHROMATE
4. MOUNTING NUT: DIE CAST ZINC
5. CAM MOUNTING SCREW: LOW CARBON STEEL, ZINC PLATE, BRIGHT CHROMATE
6. INTERNAL SPRING: STEEL, ZINC PLATE, BRIGHT CHROMATE

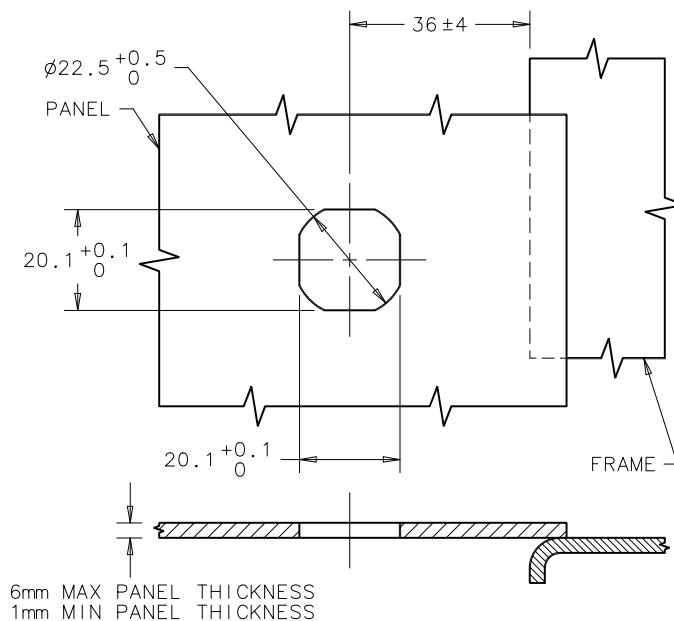
STAINLESS STEEL VERSION:

1. HOUSING: 304 AND 316, PASSIVATED
2. DRIVE STUD: 304 AND 316, PASSIVATED
3. CAM: 304 AND 316, PASSIVATED
4. MOUNTING NUT: 316
5. CAM MOUNTING SCREW: 316, PASSIVATED
6. INTERNAL SPRING: 302, PASSIVATED

ALL VERSIONS:

1. O-RING: NITRILE, BLACK
2. SEALING WASHER: POLYURETHANE, BLACK

YY CAM STYLE



REV	DATE	DRAWN/CHKD	DESCRIPTION
K	23APR2013	CMS/MGG	PRN: P2013-0871
L	14NOV2014	CMS/MWD	PRN: P2014-2300
M	13JAN2016	CMS/KH	PRN: P2016-0062
N	08FEB2016	CMS/MGG	PRN: P2016-0275
O	22MAR2017	CMS/MWD	PRN: P2017-0683
P	15MAY2017	CMS/MWD	PRN: P2017-1170
Q	11SEP2017	CMS/MWD	PRN: P2017-2249
R	09MAR2018	CMS/MGG	PRN: P2018-0595

NOTES:

1. SEE SHEET 1 FOR PART NUMBERS, MATERIAL & FINISH AND PANEL PREPARATION.

MILLIMETERS

ALL DIMENSIONS WITHOUT TOLERANCES ARE FOR REFERENCE ONLY.

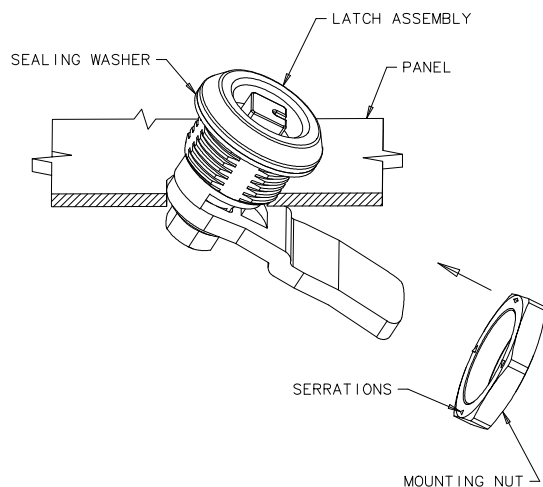


SHEET 3 OF 3

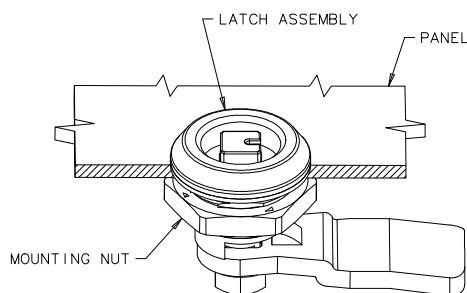
INSTALLATION METHOD 1

USE WHEN GRIP IS EQUAL TO OR EXCEEDS PANEL THICKNESS BY 9mm.

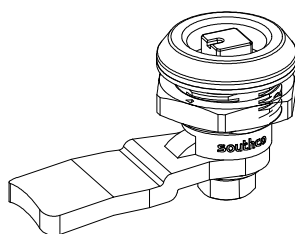
1. PLACE SEALING WASHER ONTO LATCH HOUSING.
2. TILT LATCH THROUGH MOUNTING HOLE.
3. INSTALL MOUNTING NUT AND TIGHTEN TO:
10 N·m MAX (ZINC VERSION)
20 N·m MAX (STAINLESS STEEL VERSION)



YY CAM STYLE



PART NUMBER E5-6-05X-131 SHOWN

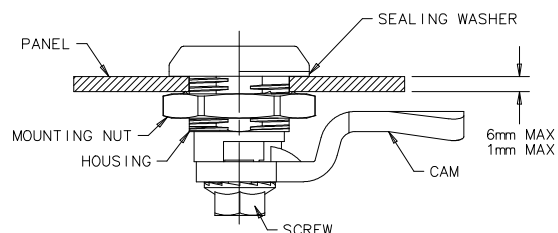
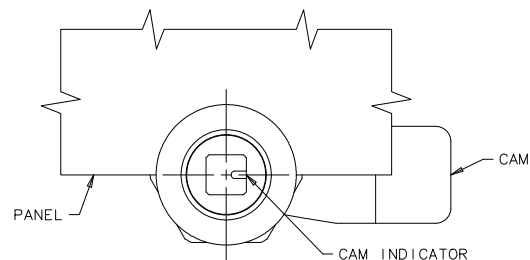
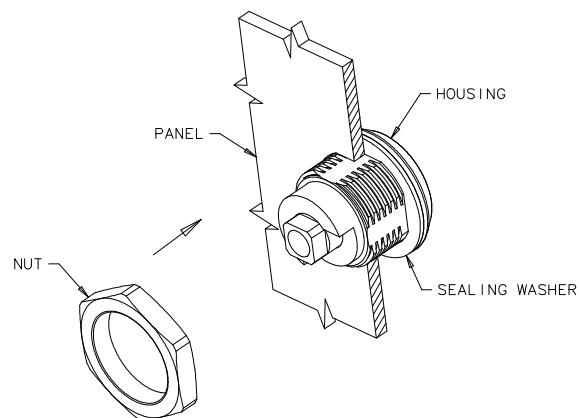
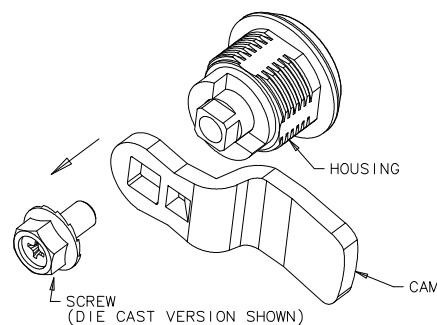


INSTALLATION METHOD 2

REQUIRED WHEN GRIP DOES NOT EXCEED PANEL THICKNESS BY 9mm.

1. REMOVE SCREW FROM HOUSING, DETACHING CAM FROM LATCH ASSEMBLY.
2. PLACE SEALING WASHER ONTO LATCH HOUSING AND PLACE THROUGH MOUNTING HOLE.
3. INSTALL MOUNTING NUT AND TIGHTEN TO:
10 N·m MAX (ZINC VERSION)
20 N·m MAX (STAINLESS STEEL VERSION)
4. RE-ATTACH CAM TO LATCH ASSEMBLY. ASSURE THAT CAM INDICATOR POINTS TO CAM LOCATION.
5. INSTALL SCREW AND TIGHTEN TO:
5 N·m MAX (ZINC VERSION)
10 N·m MAX (STAINLESS STEEL VERSION)

FOR PUSH TO CLOSE CAMS, SEE DRAWING J-E5-51.



PART NUMBER E5-6-05X-051 SHOWN