

REV.	DATE	BY-CHKD	REVISIONS						
A	2 NOV 93	RES	PRN: E5-07						
B	11 NOV 94	DAZ	PRN: E5-15						
C	03 DEC 98	WJS	PRN: E5-62						

SEE DRAWING J-E5-1 FOR PART DETAILS AND INSTALLATION INSTRUCTIONS.

TO DETERMINE THE CORRECT PART NUMBER FOR YOUR APPLICATION:

ASSEMBLED AND PACKAGED LATCH (WILL ONLY INSTALL IN PANELS 1mm TO 6mm THICK, AND GRIP MUST BE AT LEAST 4mm GREATER THAN PANEL THICKNESS)

E5-**V**-**WWX**-**YYZ**

HOUSING STYLE
 1 = HOUSING I (FOR GRIP 0 TO 20mm)
 2 = HOUSING II (FOR GRIP 22 TO 28mm)

ACTUATION STYLE (SEE BELOW)

PAWL TYPE (SEE BELOW)

FINISH
 1 = TEXTURED CHROME PLATE
 5 = BLACK POWDER COAT

SEALING OPTION
 0 = NO O-RING OR SEALING WASHER
 1 = O-RING AND SEALING WASHER INCLUDED FOR IP-65/NEMA 12 RATING

UNASSEMBLED LATCH / COMPONENTS SHIPPED SEPARATELY (REQUIRED FOR PANELS GREATER THAN 6mm THICK)
 ONE HOUSING, ONE DRIVE STUD, AND ONE PAWL/HARDWARE PACKAGE REQUIRED FOR A COMPLETE ASSEMBLY

HOUSING:

E5-G-**V**

HOUSING STYLE
 1 = HOUSING I (FOR PANELS 1 TO 6mm THICK AND GRIP 0 TO 20mm)
 2 = HOUSING II (FOR PANELS 1 TO 14mm THICK AND GRIP 6 TO 28mm)

DRIVE STUD:

E5-T**V**-**WWX**

DRIVE STUD STYLE
 1 = FOR USE WITH HOUSING I (SEE BELOW)
 2 = FOR USE WITH HOUSING II (SEE BELOW)

ACTUATION STYLE (SEE BELOW)

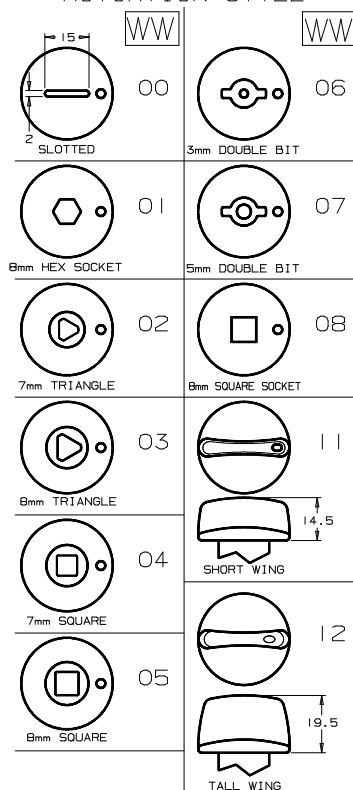
FINISH
 1 = TEXTURED CHROME PLATE
 5 = BLACK POWDER COAT

PAWL/HARDWARE PACKAGE: E5-P-**YYZ**

PAWL TYPE (SEE BELOW)

SEALING OPTION
 0 = NO O-RING OR SEALING WASHER
 1 = O-RING AND SEALING WASHER INCLUDED FOR IP-65/NEMA 12 RATING

ACTUATION STYLE



PAWL TYPE

GRIP (mm)	WHEN USING HOUSING I	WHEN USING HOUSING II	YY	
DO NOT USE	6	00		18
0	8	01		16
2	10	02		14
4	12	03		12
6	14	04		10
8	16	05		8
10	18	06		6
12	20	07		4
14	22	08		2
16	24	09		0
18	26	10		2
20	28	11		4

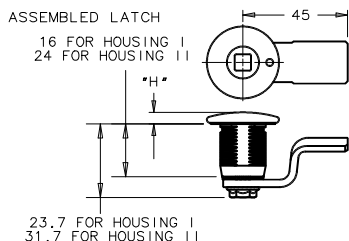
REV.	DATE	DRAWN	REVISION
G	08DEC98	MJS	PRN: E5-62
H	08DEC99	VN1 DLH	PRN: E5-73 (CONVERTED TO 2D SDRC)

ALL DIMENSIONS ARE IN
MILLIMETERS.

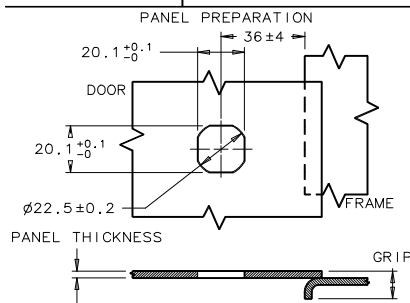
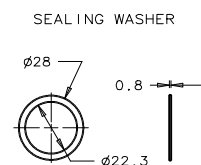
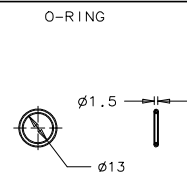
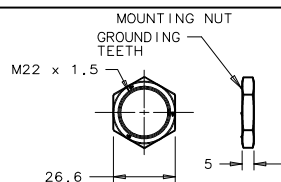
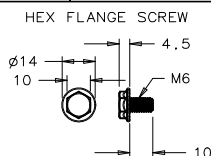
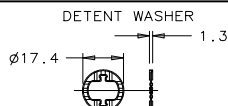
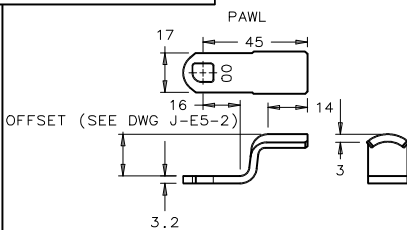
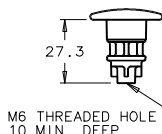
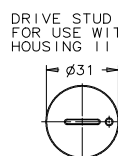
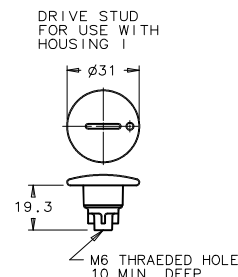
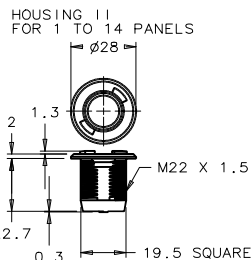
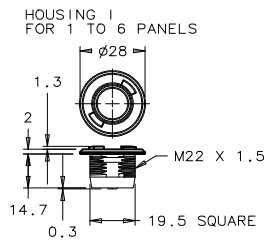
ALL DIMENSIONS WITHOUT TOLERANCES ARE REFERENCE.



SEE DRAWINGS J-E5-2, J-E5-2-A, J-E5-3, AND J-E5-3-A FOR PART NUMBERING SYSTEMS.



"H" = 7.5 FOR BELLCORE DRIVER STYLE
4.5 FOR ALL OTHER DRIVER STYLES



MATERIAL AND FINISH

DRIVE STUDS: (CHROME) DIE CAST
ZINC, CHROME PLATED. (BLACK) DIE
CAST ZINC, NATURAL; HEAD IS BLACK
POWDER COATED

HOUSING: DIE CAST ZINC, CLEAR ORGANIC SEALER.
PAWL: LOW CARBON STEEL, ZINC ALLOY PLATE, BRIGHT CHROMATE PLUS SEALER.

DETENT WASHER: 301 STAINLESS STEEL
ZINC PLATE BRIGHT CHROMATE.

HEX FLANGE SCREW: LOW CARBON STEEL,
ZINC PLATE, CHROMATE PLUS SEALER.

MOUNTING NUT: DIE CAST ZINC, CLEAR ORGANIC SEALER.

O-RING: BUNA-N, BLACK.

SEATING WASHER: NEOPRENE, BLACK.

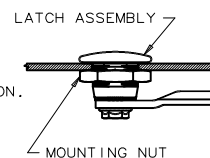
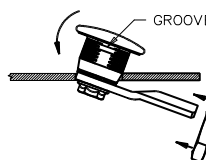
STRENGTH GUIDELINES

MAXIMUM WORKING LOAD ON PAWL: 330N
AVERAGE ULTIMATE LOAD ON PAWL: 450N

INSTALLATION

PRE-ASSEMBLED LATCHES

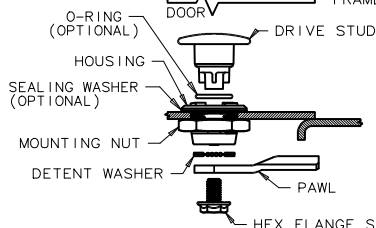
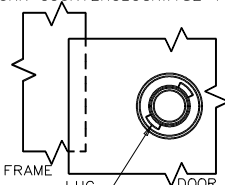
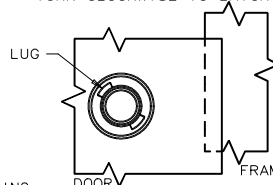
1. PRE-ASSEMBLED LATCHES CAN BE USED IN PANELS UP TO 6 THICK. GRIP MUST BE AT LEAST 4 GREATER THAN PANEL THICKNESS.
2. SLIDE SEALING WASHER (IF SUPPLIED) UNDER HEAD OF LATCH.
3. ORIENT LATCH WITH FRAME. FOR TYPE A INSTALLATION (SEE BELOW), GROOVES IN HOUSING SHOULD BE PERPENDICULAR TO FRAME. FOR TYPE B INSTALLATION, GROOVES SHOULD BE PARALLEL WITH FRAME. FIGURE SHOWN. TYPE A INSTALLATION.
4. LATCH TIGHTEN FRAME WHILE HOLDING IN OVER FAWL.
5. SEAT LATCH. THREAD NUT ONTO HOUSING AND TIGHTEN TO 10 N·m MAX.



UN-ASSEMBLED LATCHES

TYPE A
TURN CLOCKWISE TO LATCH

TYPE B
TURN COUNTERCLOCKWISE TO LATCH



1. SLIDE SEALING WASHER (IF SUPPLIED) UNDER HEAD OF LATCH.
2. INSTALL HOUSING IN PANEL WITH LUG ORIENTED AS INDICATED FOR TYPE A OR TYPE B INSTALLATION.
3. THREAD MOUNTING NUT ONTO HOUSING, TIGHTEN TO 10 N·m MAX.
4. INSTALL O-RING (IF SUPPLIED) AND DRIVE STUD. USE OF A COMMERCIAL O-RING LUBRICANT IS RECOMMENDED.
5. SLIDE DRIVE STUD INTO HOUSING, ORIENTING INDICATOR DIMPLE ON FACE TOWARD FENCE.
6. INSTALL DRIVE WASHER AND PAWL ON END OF DRIVE STUD AND FASTEN WITH SCREW. MAX. TIGHTENING TORQUE 5 N·m.

- HEX FLANGE SCREW