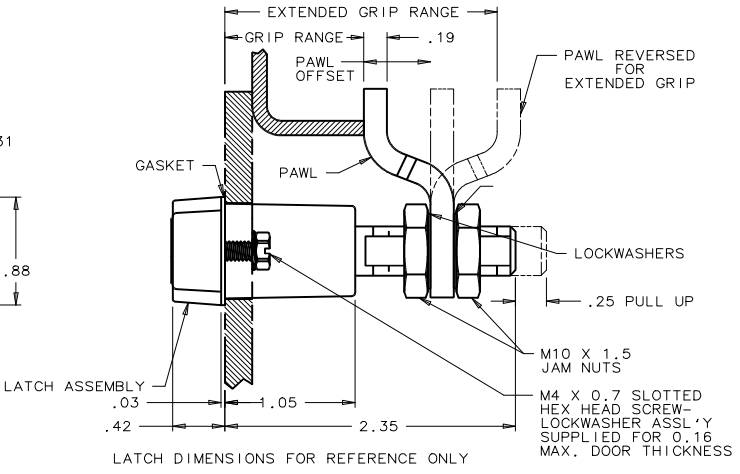
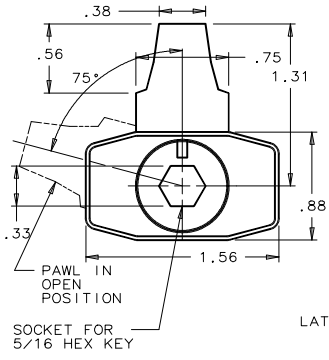


southco		PROPRIETARY ITEM - EXCEPT FOR USES EXPRESSLY GRANTED IN WRITING INFORMATION DISCLOSED HEREON IS CONFIDENTIAL AND ALL RIGHTS, PATENT AND OTHERWISE ARE RESERVED BY SOUTHCO, INC.		VISE-ACTION™ LATCH 5/16 HEX SOCKET DRIVER		DATE	DRAWN	CHKD	SCALE	DRAWING NUMBER
REV.	DATE	BY-CHKD	REVISIONS	ASSEMBLY PART NO.	GRIP RANGE	PAWL OFFSET	RES	RES	1 : 1	J-E3-36
A	7/3/90	RES	PRN: E3-239	E3-36-1X	0.31 - 0.93 or 2.47 - 3.00	1.08				
B	15 JAN.93	KPL	PRN: S-1-O3							
C	10OCT96	SWD	PRN: S-9-3-23	E3-36-2X	0.86 - 1.47 or 1.93 - 2.55	0.54				
D	07JUL99	SCK-JSS	PRN: E3-801/E3-806	E3-36-3X	1.39 - 2.00	NONE				
E	14FEB2001	JRS	PRN: E3-847A							
F	29JAN2015	DMS-WMD	PRN: P2015-0226							

THE ABOVE PART NUMBERS ARE TYPE "A" (TURN COUNTERCLOCKWISE TO LATCH). FOR TYPE "B" ASSEMBLIES (TURN COUNTERCLOCKWISE TO LATCH). CHANGE THE THIRD DIGIT OF THE PART NUMBER FROM 1 TO 23. EXAMPLE: E3-236-15

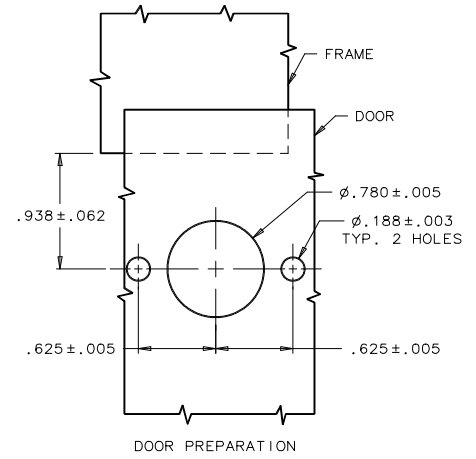


- X- FINISH TABLE
- 1 - BRIGHT CHROME PLATE
 - 4 - CARDINAL WHITE POWDER COAT
 - 5 - BLACK POWDER COAT
 - 6 - LIGHT GREY POWDER COAT
 - 7 - SATIN SILVER POLYESTER POWDER COAT
 - 8 - SILVER METALLIC URETHANE POWDER COAT

NOTE A: ZINC PLATE CHROMATE PLUS SEALER

DRAWING NUMBER
J-E3-36

- NOTES:
1. OPERATION: 195° TURN OF KEY CAUSES PAWL TO ROTATE 75° THEN PULL UP 0.25.
 2. PAWL, NUTS, LOCKWASHERS, GASKET, AND SCREW ASS'Y'S SHIPPED UNASSEMBLED IN BAG WITH LATCH ASSEMBLY.
 3. INSTALLATION:
 - a. INSTALL GASKET OVER LATCH AND INSTALL LATCH IN DOOR. ATTACH USING M4 SCREW ASSEMBLIES (7mm HEX) 15 in-lb MAX. TIGHTENING TORQUE.
 - b. INSTALL JAM NUT, LOCKWASHER, PAWL, LOCKWASHER, AND JAM NUT ON SHAFT. ADJUST JAM NUTS TO POSITION PAWL AT CORRECT GRIP (WITH LATCH CLOSED). TIGHTEN JAM NUTS (180 in-lb MAX. TORQUE) USING TWO 17mm WRENCHES.
- CAUTION: ADJUST PAWL SO THAT NO MORE THAN 70 in-lb TORQUE ON KEY IS REQUIRED TO CLOSE LATCH.



TTM - METAL COATINGS INTERNATIONAL, INC.

PATENT US, UK
DIMENSIONS ARE INCHES UNLESS NOTED OTHERWISE