

**southco**

PROPRIETARY ITEM - EXCEPT FOR USES EXPRESSLY IDENTIFIED IN THIS INFORMATION, ALL RIGHTS ARE RESERVED BY SOUTHCO, INC.

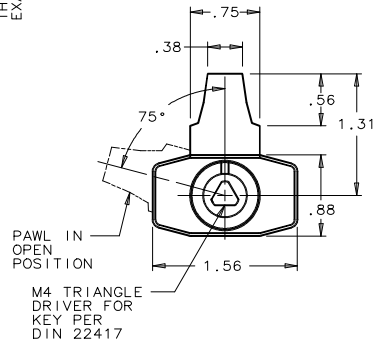
WISE ACTION™ LATCH  
M4 TRIANGLE DRIVER

DATE: 5/28/89  
DRAWN: RES  
CHKD:  
SCALE: 0.75 : 1  
DRAWING NUMBER: J-E3-33

REV.	DATE	DRAWN	REVISION	ASSEMBLY PART NO.	GRIP RANGE	PAWL OFFSET
B	15 JAN. 93	RPL	PRN: S-1-03	E3-33-1X	2.27 - 3.88 or 1.08	
C	09 OCT 96	SWD	PRN: S-93-23	E3-33-2X	0.88 - 2.42 or 0.54	
D	03 DEC 98	JGK	PRN: E3-716A	E3-33-3X	1.39 - 2.00 NONE	
E	07 JUL 99	SCX	PRN: E3-801/E3-806			
F	14 FEB 2001	JRS	PRN: E3-847A			
G	29 JAN 2015	OMS	PRN: P2015-0226			

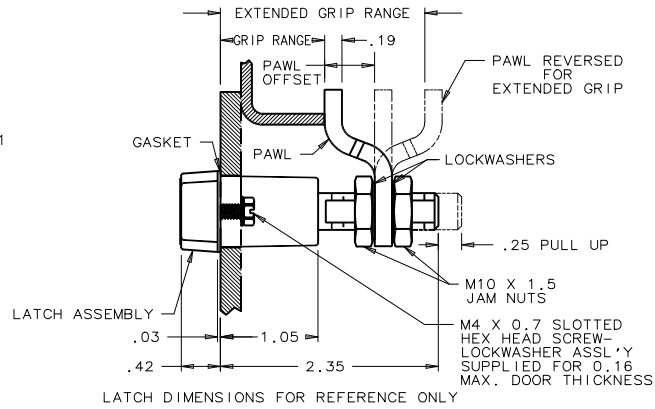
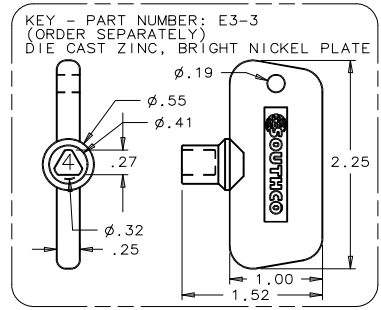
NOTE: ZINC PLATE CHROMATE PLUS SEALER

THE ABOVE PART NUMBERS ARE TYPE "A" (TURN CLOCKWISE TO LATCH). FOR TYPE "B" ASSEMBLIES (TURN COUNTERCLOCKWISE TO LATCH), CHANGE THE THIRD DIGIT OF THE PART NUMBER FROM 3 TO 23. EXAMPLE: E3-233-15

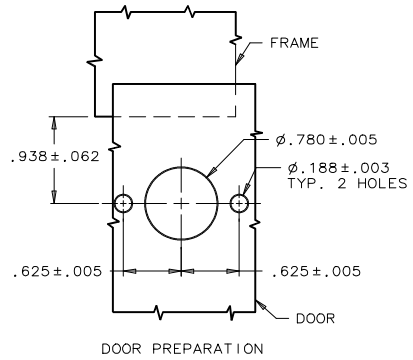


X- FINISH TABLE

- 1 - BRIGHT CHROMATE PLATE
- 4 - CARDINAL WHITE POWDER COAT
- 5 - BLACK POWDER COAT
- 6 - LIGHT GRAY POWDER COAT
- 7 - SATIN SILVER POLYESTER POWDER COAT
- 8 - SILVER METALLIC URETHANE POWDER COAT



- NOTES:
1. OPERATION: 195° TURN OF KEY CAUSES PAWL TO ROTATE 75° THEN PULL UP 0.25.
  2. PAWL, NUTS, LOCKWASHERS, GASKET, AND SCREW ASSLY'S SHIPPED UNASSEMBLED IN BAG WITH LATCH ASSEMBLY.
  3. INSTALLATION:
    - a. INSTALL GASKET OVER LATCH AND INSTALL LATCH IN DOOR. ATTACH USING M4 SCREW ASSEMBLIES (7mm HEX) 15 in-lb MAX. TIGHTENING TORQUE.
    - b. INSTALL JAM NUT, LOCKWASHER, PAWL, LOCKWASHER, AND JAM NUT ON SHAFT. ADJUST JAM NUTS TO POSITION PAWL AT CORRECT GRIP (WITH LATCH CLOSED). TIGHTEN JAM NUTS (180 in-lb MAX. TORQUE) USING TWO 17mm WRENCHES.
- CAUTION: ADJUST PAWL SO THAT NO MORE THAN 70 in-lb TORQUE ON KEY IS REQUIRED TO CLOSE LATCH.



DRAWING NUMBER  
J-E3-33

†TM - METAL COATINGS INTERNATIONAL, INC.

PATENT US, UK  
DIMENSIONS ARE INCHES UNLESS NOTED OTHERWISE