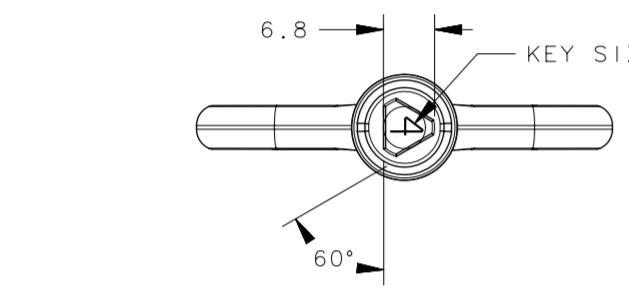
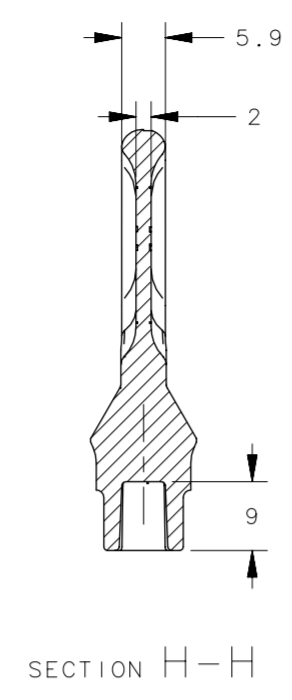
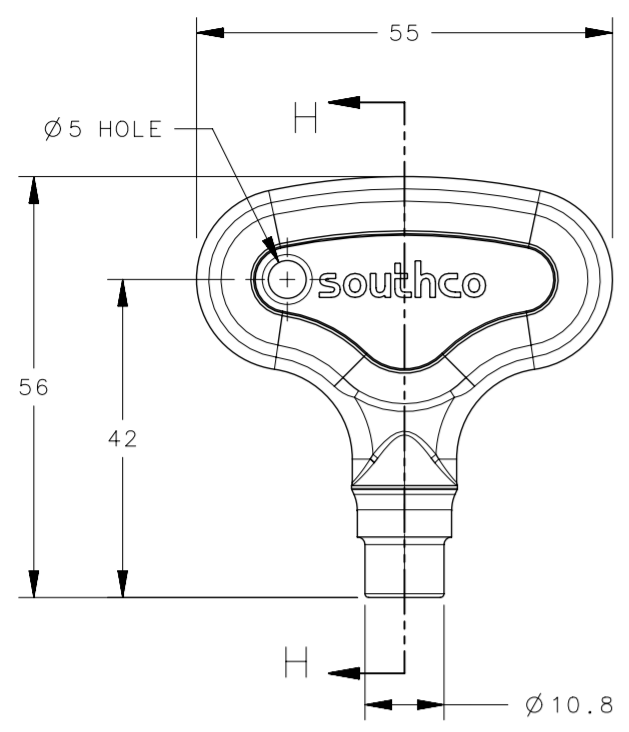
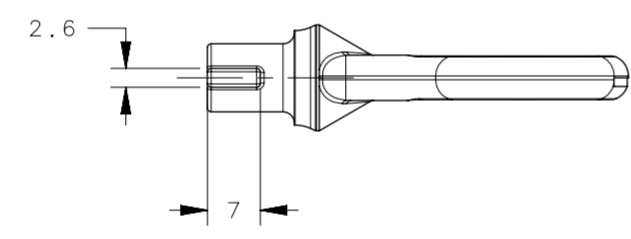
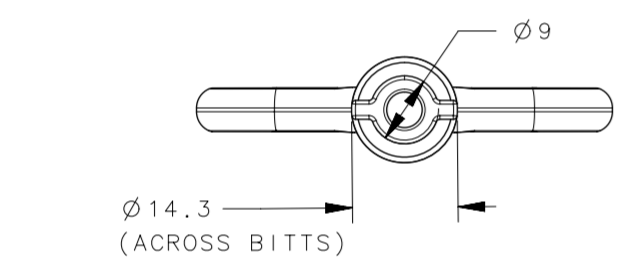


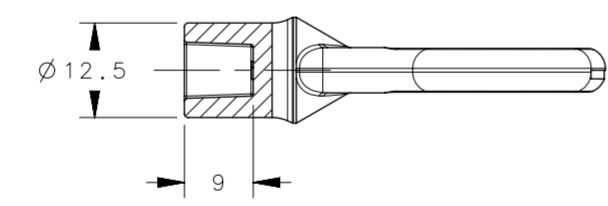
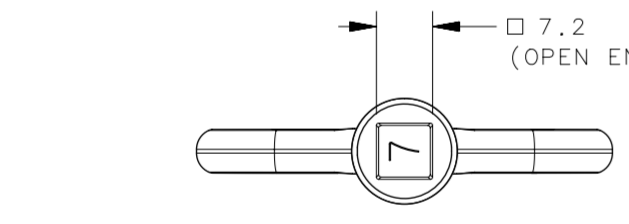
8 7 6 5 4 3 2 1



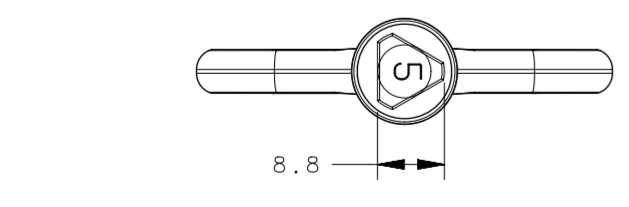
E3-3-1  
E3-3-2  
7mm TRIANGLE TOOL



E3-9-1  
E3-9-2  
5mm DOUBLE-BITTED TOOL



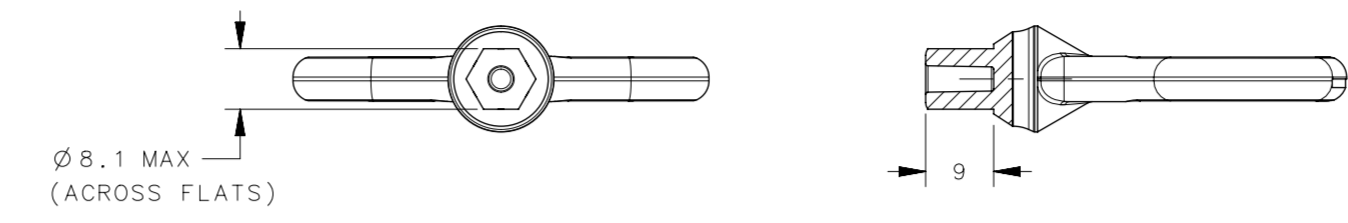
E3-4-1  
E3-4-2  
7mm SQUARE TOOL



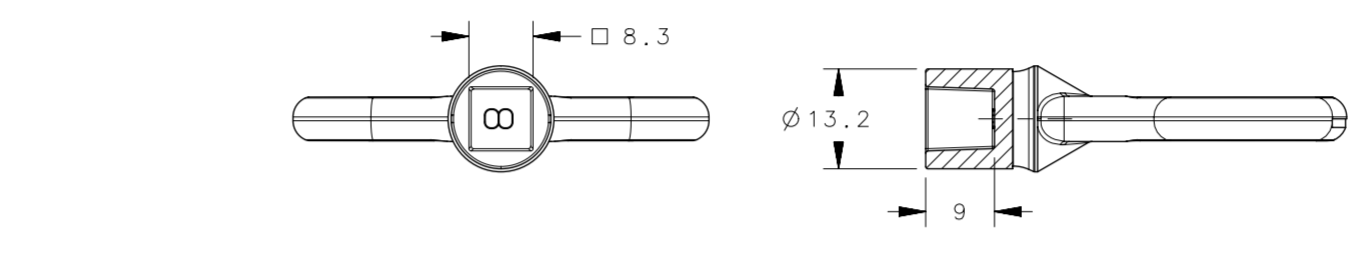
E3-7-1  
E3-7-2  
M5 (8mm) TRIANGLE TOOL

NOTES:  
A. ALL KEYS USE THE SAME WING WITH DIFFERENT TOOL ENDS.  
B. DIGITS \*XX\* IN THE PART No. IDENTIFY KEY BIT STYLE (EX. XX=8 (8mm SQUARE)).

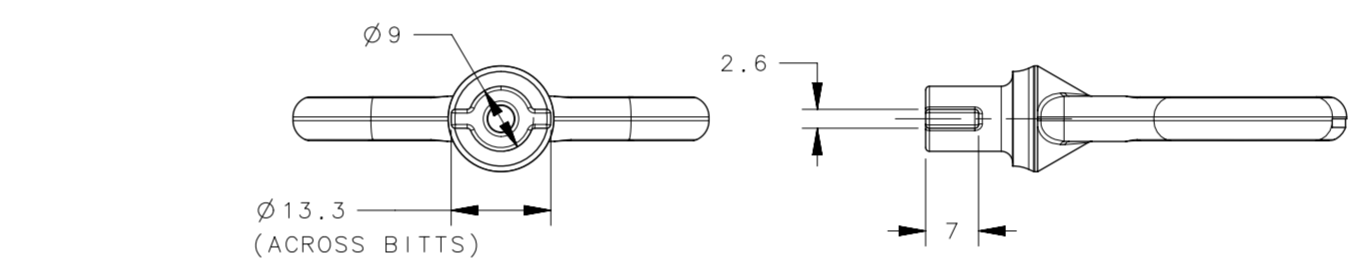
8 7 6 5 4 3 2 1



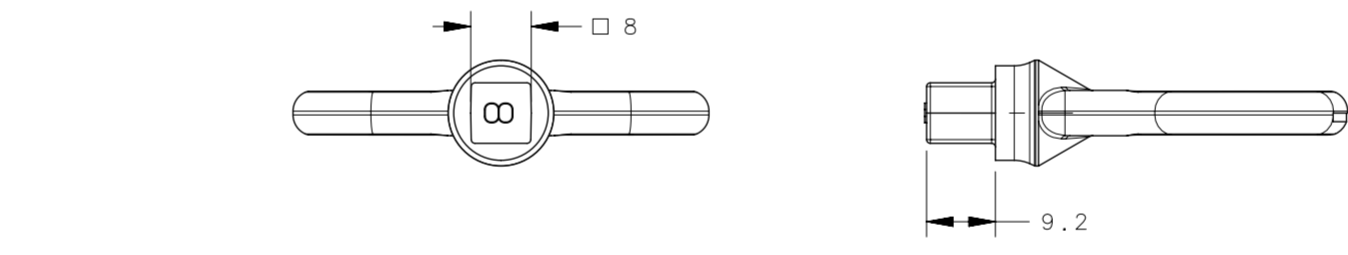
E3-11-1  
E3-11-2  
8mm HEX ELECTRONICS TOOL



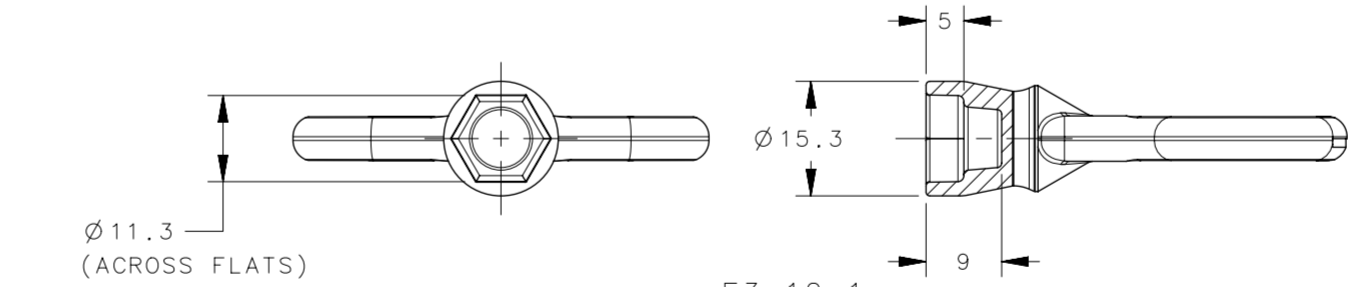
E3-8-1  
E3-8-2  
8mm SQUARE TOOL



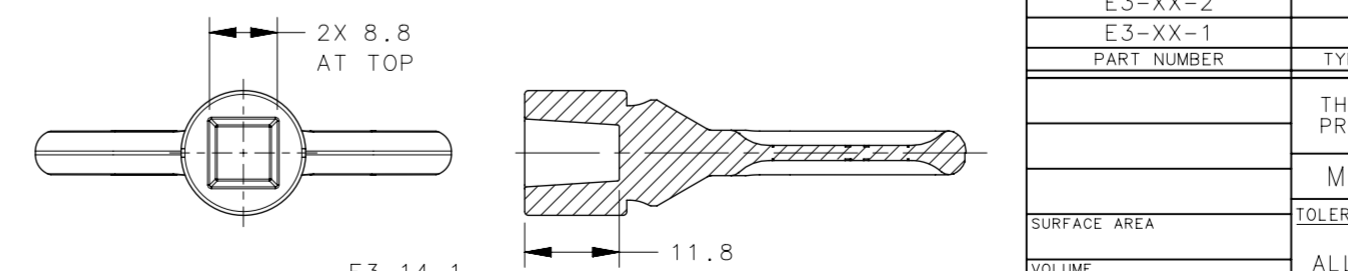
E3-2-1  
E3-2-2  
3mm DOUBLE-BITTED STUD TOOL



E3-10-1  
E3-10-2  
8mm SQUARE STUD TOOL

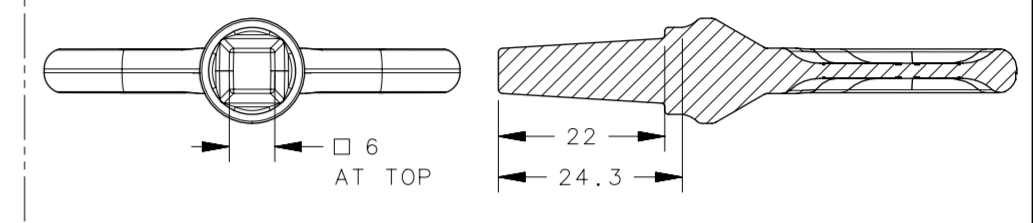
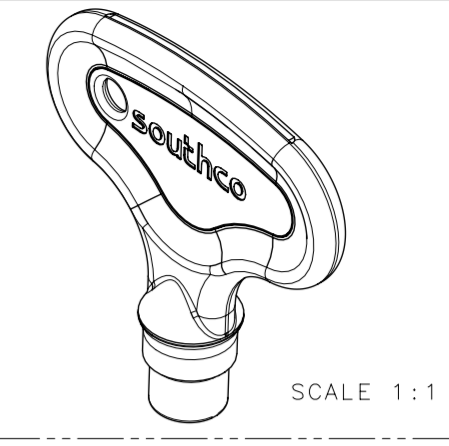


E3-12-1  
E3-12-2  
BELCORE 216 TOOL

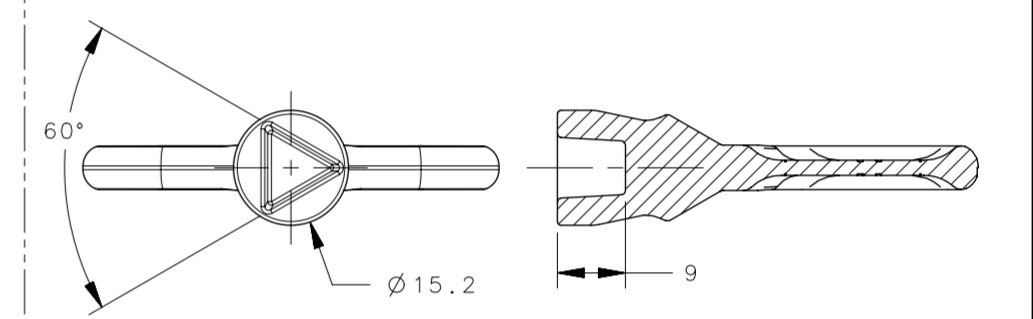


E3-14-1  
E3-14-2  
RAILWAY STANDARD TOOL

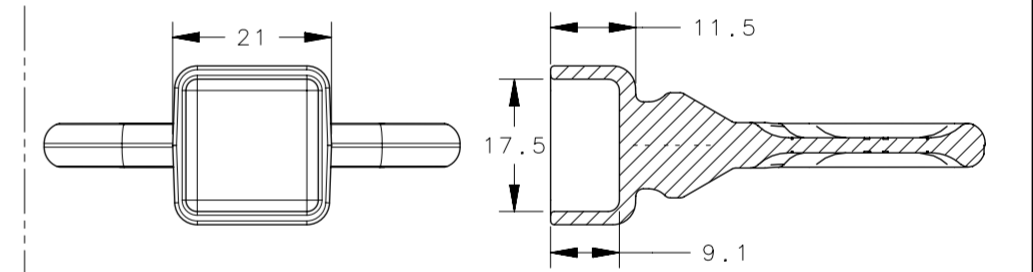
REVISION HISTORY			
REV	DATE	BY	DESCRIPTION
K	24MAY2018	NBK/DMS	PRN: P2018-0663



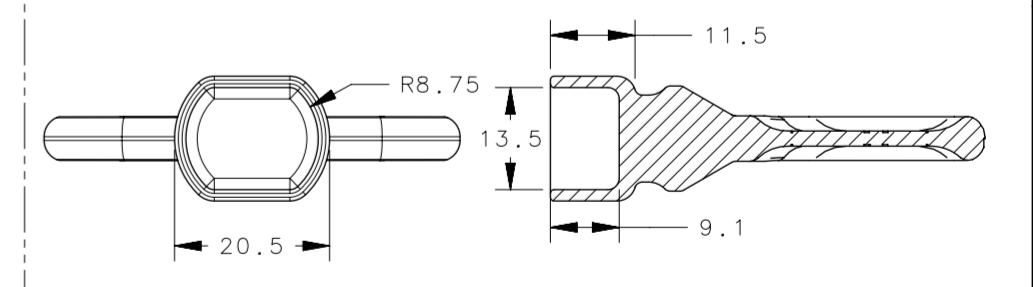
E3-15-1  
E3-15-2  
RAILWAY MALE TOOL



E3-16-1  
E3-16-2  
7mm TRIANGLE TOOL



E3-17-1  
17mm SQUARE TOOL



E3-18-1  
13mm DOUBLE D TOOL

E3-XX-2	KEY	DIE CAST ZINC	NATURAL WITH CHEMICAL PROTECTIVE FILM
E3-XX-1	KEY	DIE CAST ZINC	BRIGHT NICKEL PLATE
PART NUMBER	TYPE OF COMPONENT	MATERIAL	FINISH
	THIRD ANGLE PROJECTION		
	MILLIMETERS [IN]		
SURFACE AREA	TOLERANCES UNLESS OTHERWISE NOTED		
VOLUME	ALL DIMENSIONS WITHOUT TOLERANCES ARE FOR REFERENCE ONLY.		
PROPRIETARY ITEM EXCEPT FOR USES EXPRESSLY GRANTED IN WRITING, INFORMATION DISCLOSED HEREON IS CONFIDENTIAL AND ALL RIGHTS, PATENT AND OTHERWISE, ARE RESERVED BY SOUTHCO, INC.	PER ASME Y14.5M-1994	SIZE SYSTEM A2 NX	DWG NO. J-E3-2-1
	DRAWN BY ALC	DATE 13JUN2000	SCALE 1:1 SHEET 1 OF 1

8 7 6 5 4 3 2 1