

NOTES:

- A. OPERATION: 195° TURN OF HANDLE CAUSES PAWL TO ROTATE 75° THEN PULL UP 0.25.
- B. PAWL, NUTS, AND LOCKWASHERS SHIPPED UNASSEMBLED IN BAG WITH LATCH ASSEMBLY.
- C. INSTALLATION:
 1. INSERT LATCH INTO HOLE IN DOOR. CHECK FOR PROPER ORIENTATION AND OPERATION OF PAWL.
 2. INSTALL USING LOCKWASHER AND MOUNTING NUT (27mm ACROSS FLATS). MAX. TIGHTENING TORQUE 250 in-lb.
 3. INSTALL JAM NUT, LOCKWASHER, PAWL, LOCKWASHER, AND JAM NUT ON SHAFT. ADJUST JAM NUTS TO POSITION PAWL AT CORRECT GRIP (WITH LATCH CLOSED). TIGHTEN JAM NUTS (180 in-lb MAX. TORQUE) USING TWO 17mm WRENCHES.
 4. CAUTION: ADJUST PAWL SO THAT NO MORE THAN 70 in-lb TORQUE ON KEY IS REQUIRED TO CLOSE LATCH.

FINISH TABLE

| PART NUMBER | FINISH |
|-------------|--------------------------------------|
| E3-18-X5 | - BLACK POWDER COATING |
| E3-18-X7 | - SATIN SILVER POLYESTER POWDER COAT |

southco

PROPRIETARY ITEM - EXCEPT FOR USES EXPRESSLY GRANTED IN WRITING INFORMATION DISCLOSED HEREON IS CONFIDENTIAL AND ALL RIGHTS PATENT AND OTHERWISE ARE RESERVED BY SOUTHCO, INC.

WISE-ACTION LATCH-INTERNATIONAL SERIES LOCKING T-HANDLE

| DATE | DRAWN | CHKD | SCALE | DRAWING NUMBER |
|---------|-------|------|-------|----------------|
| 7/19/90 | RES | | 1:1 | J-E3-18 |

| REV | DATE | DRAWN/CHKD | DESCRIPTION | ITEM | PART NUMBER | GRIP RANGE | EXTENDED GRIP RANGE | PAWL OFFSET |
|-----|-----------|------------|-----------------|----------------|-------------|------------|---------------------|-------------|
| A | 12MAY93 | JC | PRN: S-1-03 | LATCH ASSEMBLY | E3-18-15 | 0.45-1.07 | 2.61-3.00 | 1.08 |
| B | 21APR94 | TDS | PRN: E3-365 | LATCH ASSEMBLY | E3-18-17 | 0.45-1.07 | 2.61-3.00 | 1.08 |
| C | 11OCT96 | SWD | PRN: S-93-23 | LATCH ASSEMBLY | E3-18-25 | 1.00-1.62 | 2.07-2.69 | 0.54 |
| D | 26FEB97 | GDM | PRN: E3-587 | LATCH ASSEMBLY | E3-18-27 | 1.00-1.62 | 2.07-2.69 | 0.54 |
| E | 24APR98 | JGK | PRN: E3-689 | LATCH ASSEMBLY | E3-18-35 | 1.53-2.15 | NONE | NONE |
| F | 06MAR2003 | RLR/MJS | PRN: P2003-0112 | LATCH ASSEMBLY | E3-18-37 | 1.53-2.15 | NONE | NONE |

INCHES

ALL DIMENSIONS WITHOUT TOLERANCES ARE FOR REFERENCE ONLY.

THIRD ANGLE PROJECTION

B PAPER SIZE

THE ABOVE PART NUMBERS ARE TYPE "A" (TURN CLOCKWISE TO LATCH). FOR TYPE "B" ASSEMBLIES (TURN COUNTERCLOCKWISE TO LATCH), CHANGE THE THIRD DIGIT OF THE PART NUMBER FROM 1 TO 22. EXAMPLE: E3-223-15

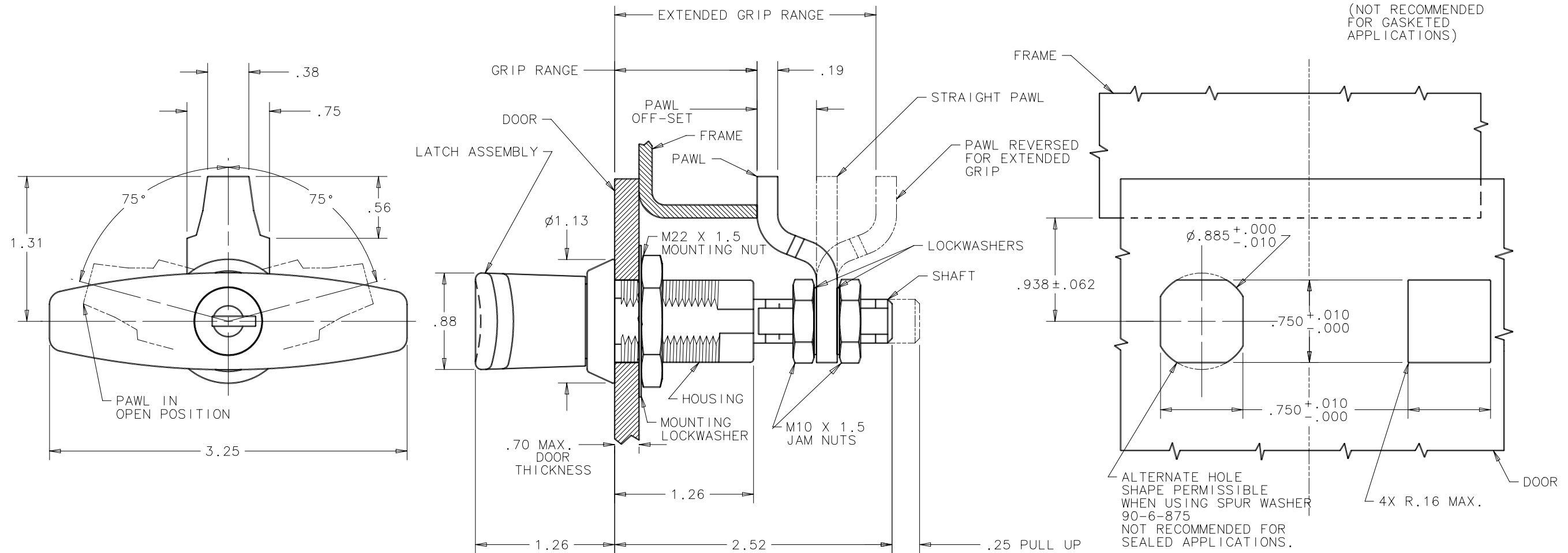
| COMPONENT | MATERIAL | FINISH |
|---------------------|-------------------------|--------------------------------------|
| HOUSING | DIE CAST ZINC | SEE FINISH TABLE |
| HANDLE | DIE CAST ZINC | SEE FINISH TABLE |
| LOCK PLUG | DIE CAST ZINC AND BRASS | SEE FINISH TABLE |
| RETAINER | 302 STAINLESS STEEL | NATURAL |
| SPRING | 302 STAINLESS STEEL | NATURAL |
| O-RING | BUNA-N | NATURAL |
| SLEEVE | 1075 STEEL | DACROTIZED † |
| CAM | 1075 STEEL | DACROTIZED † |
| SHAFT | LOW CARBON STEEL | ZINC PLATE, CHROMATE PLUS SEALER |
| PIN | 1008 STEEL | ZINC PLATE PLUS CHROMATE DIP, YELLOW |
| PAWL | 1010 STEEL | ZINC PLATE, CHROMATE PLUS SEALER |
| JAM NUTS (2) | LOW CARBON STEEL | ZINC PLATE, CHROMATE PLUS SEALER |
| LOCKWASHERS (2) | SPRING STEEL | ZINC PLATE, CHROMATE PLUS SEALER |
| MOUNTING NUT | DIE CAST ZINC | ZINC PLATE, BRIGHT CHROMATE |
| MOUNTING LOCKWASHER | SPRING STEEL | ZINC PLATE, CHROMATE PLUS SEALER |
| LOCK EXTENDER | DIE CAST ZINC | CHEMICAL PROTECTIVE FILM |
| LOCK SLIDE | DIE CAST ZINC | CHEMICAL PROTECTIVE FILM |
| KEYS (2) | BRASS | NATURAL |

DOOR PREPARATION

METHOD A

METHOD B

(NOT RECOMMENDED FOR GASKETED APPLICATIONS)



† TM - METAL COATINGS INTERNATIONAL, INC.