

REV.	DATE	BY-CHKD	REVISIONS	ASSEMBLY PART NO.	GRIP RANGE	PAWL OFFSET	COMPONENT	MATERIAL	FINISH
A	07JUL99	SOK-JSS	PRN: E3-801/E3-806 E3-312-7X	E3-312-7X	11 MIN- 22 MAX or 62 MIN- 73 MAX	25 (DEEP)	HOUSING	DIE CAST ZINC	SEE LEGEND
B	14FEB2001	JRS-JSS	PRN: E3-847A E3-312-8X	E3-312-8X	48 MIN- 60 MAX or 36 MIN- 48 MAX	13 (MEDIUM)	CAP	DIE CAST ZINC	SEE LEGEND
C	18MAY2015	OWS-MMD	PRN: P2015-0906 E3-312-9X	E3-312-9X	36 MIN- 48 MAX	NONE (STRAIGHT)	RETAINER	302 STAINLESS STEEL	PASSIVATED
							SPRING	302 STAINLESS STEEL	NATURAL
							O-RING	BUNA-N	NATURAL
							SLEEVE	1075 STEEL	DAGROSEALED†
							CAM	1075 STEEL	DAGROSEALED†
							SHAFT	LOW CARBON STEEL	CHROME PLATE PLUS CHROME PLATE PLUS CHROME PLATE PLUS
							PIN	100B STEEL	ZINC ALLOY PLATE, YELLOW CHROME PLATE PLUS SEALER
							PAWL	1010 STEEL	ZINC ALLOY PLATE, WHITE CHROME PLATE PLUS SEALER
							JAM NUTS (2)	LOW CARBON STEEL	ZINC ALLOY PLATE, WHITE CHROME PLATE PLUS SEALER
							LOCKWASHERS (2)	SPRING STEEL	ZINC ALLOY PLATE, WHITE CHROME PLATE PLUS SEALER
							ACTUATOR	1010 STEEL	ZINC ALLOY PLATE, YELLOW CHROME PLATE PLUS SEALER
							SCREW/LK WSHR ASS'Y	LOW CARBON STEEL	ZINC ALLOY PLATE, WHITE CHROME PLATE PLUS SEALER
							WEATHER SEAL GASKET	SR RUBBER IMPREGNATED CELLULOSE FIBRE	NATURAL

THE ABOVE PART NUMBERS ARE TYPE "A" (TURN CLOCKWISE TO LATCH).
FOR TYPE "B" ASSEMBLIES (TURN COUNTERCLOCKWISE TO LATCH).
CHANGE THE THIRD DIGIT OF THE PART NUMBER FROM 1 TO 23.
EXAMPLE: E3-2312-15

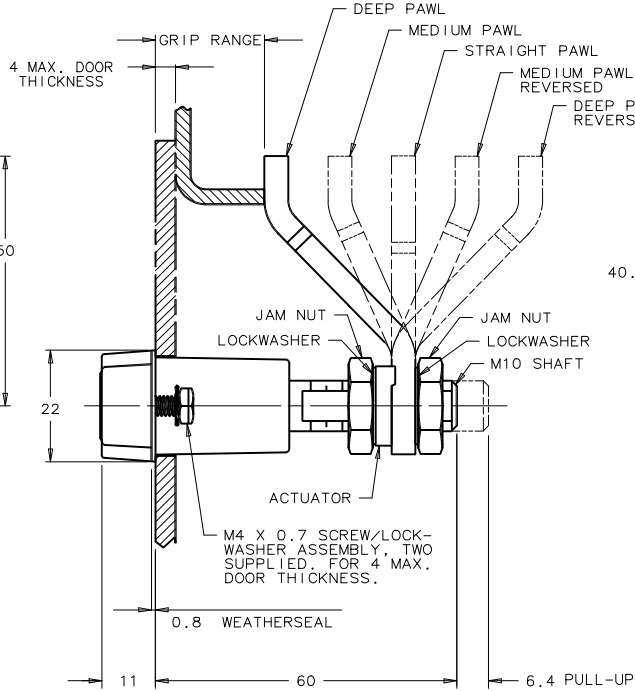
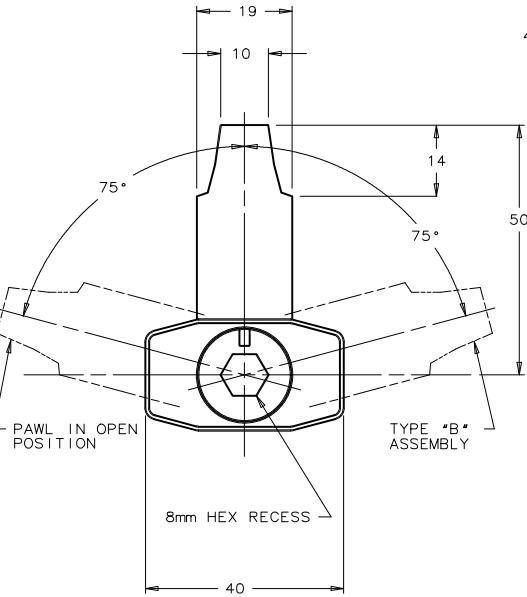
FINISH TABLE

- 1 - BRIGHT CHROME PLATE
- 4 - CARDINAL WHITE POWDER COAT
- 5 - BLACK POWDER COAT
- 6 - LIGHT GREY POWDER COAT
- 7 - SATIN SILVER POLYESTER POWDER COAT
- 8 - SILVER METALLIC URETHANE POWDER COAT

NOTES:

1. OPERATION: 195° TURN OF HEX RECESS CAUSES PAWL TO ROTATE 75° THEN PULL UP 6.4.
2. PAWL, NUTS, LOCKWASHERS, ACTUATOR AND SCREWS SHIPPED UNASSEMBLED IN BAG WITH LATCH ASSEMBLY.
3. INSTALLATION:
 - a. INSERT LATCH INTO HOLE IN DOOR. CHECK FOR PROPER ORIENTATION AND OPERATION OF PAWL.
 - b. INSTALL USING SUPPLIED MOUNTING SCREWS.
 - c. INSTALL JAM NUT, LOCKWASHER, ACTUATOR, PAWL, LOCKWASHER, AND JAM NUT ON SHAFT. ADJUST JAM NUTS TO POSITION PAWL AT CORRECT GRIP (WITH LATCH CLOSED). TIGHTEN JAM NUTS (20 N.m MAX. TORQUE) USING TWO 17mm WRENCHES.
 - d. ATTACH SOUTHCO'S No. A8 ROD ROLLER SYSTEM TO THE ACTUATOR.

CAUTION: ADJUST PAWL SO THAT NO MORE THAN 7.9 N.m TORQUE IS REQUIRED



DOOR PREPARATION

