

REV.	DATE	BY-CHKD	REVISIONS	ASSEMBLY PART NO.	GRIP RANGE	PAWL OFFSET	DESCRIPTION	COMPONENT	MATERIAL	FINISH
A	05AUG96	J55	ADDED E3-114-X (LOCKING) P/N'S	E3-113-7X	18 MIN- 27 MAX Ør 24 MIN- 40 MAX Ør	25 (DEEP)	NON-LOCKING	HOUSING	DIE CAST ZINC	SEE LEGEND
B	12MAY98	JGK	PPRN: E3-689	E3-113-8X	34 MIN- 46 MAX Ør	13 (MEDIUM)	NON-LOCKING	HANDLE	DIE CAST ZINC	SEE LEGEND
				E3-113-9X	42 MIN- 53 MAX Ør	NONE (STRAIGHT)	NON-LOCKING	RETAINER	302 STAINLESS STEEL	PASSIVATED
				E3-114-7X	18 MIN- 27 MAX Ør 67 MIN- 78 MAX Ør	25 (DEEP)	LOCKING	SPRING	302 STAINLESS STEEL	NATURAL
				E3-114-8X	24 MIN- 36 MAX Ør 29 MIN- 40 MAX Ør	13 (MEDIUM)	LOCKING	O-RING	BUNA-N	NATURAL
				E3-114-9X	42 MIN- 53 MAX Ør	NONE (STRAIGHT)	LOCKING	SLEEVE	1075 STEEL	DACROSEALDT
								CAM	1075 STEEL	DACROSEALDT
								SHAFT	LOW CARBON STEEL	ZINC ALLOY PLATE BRIGHT CHROME, PLUS SEALER
								PIN	100B STEEL	CHROMATE DIP, YELLOW
								PAWL	1010 STEEL	ZINC ALLOY PLATE BRIGHT CHROME, PLUS SEALER
								JAM NUTS (2)	LOW CARBON STEEL	ZINC ALLOY PLATE BRIGHT CHROME, PLUS SEALER
								LOCKWASHERS (2)	SPRING STEEL	ZINC ALLOY PLATE BRIGHT CHROME, PLUS SEALER
								MOUNTING NUT	DIE CAST ZINC	ACRILIC LANA-X SEALER
								LOCKWASHER	SPRING STEEL	ZINC ALLOY PLATE BRIGHT CHROME, PLUS SEALER
								ACTUATOR	1010 STEEL	ZINC ALLOY PLATE YELLOW CHROME, PLUS SEALER
								LOCK PLUG	DIE CAST ZINC AND BRGS	SEE LEGEND
								LOCK EXTENDER	DIE CAST ZINC	CHEMICAL RESISTIVE FILM
								LOCK SLIDE	DIE CAST ZINC	CHEMICAL RESISTIVE FILM
								KEYS (2)	BRASS	NATURAL

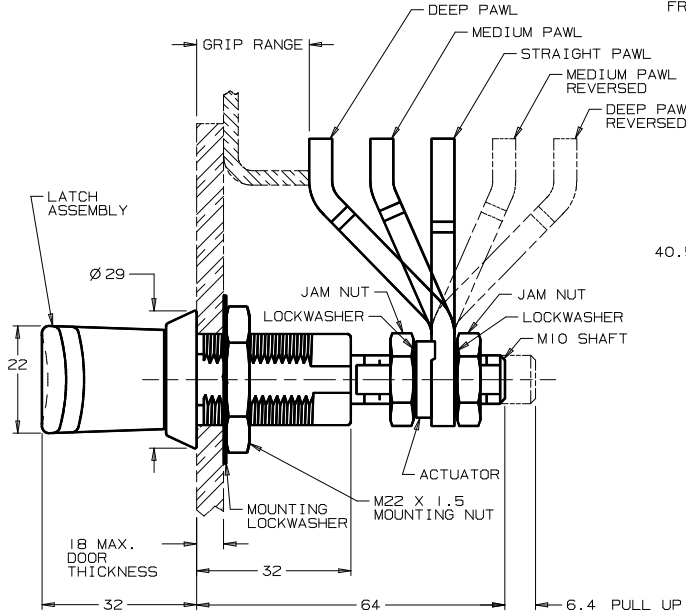
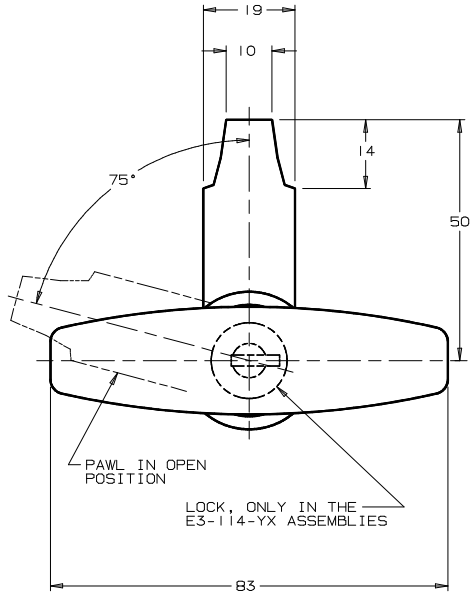
LOCKING STYLE ONLY

LEGEND

- X = HOUSING AND HANDLE FINISH OF PART NUMBER
- 5 = BLACK POWDER COATING
- 7 = SATIN SILVER POLYESTER POWDER COATING
- 8 = SILVER METALLIC POLYESTER URETHANE POWDER COATING

- NOTES:
1. OPERATION: 195° TURN OF HANDLE CAUSES PAWL TO ROTATE 75° THEN PULL UP 6.4.
 2. PAWL, NUTS, AND LOCKWASHERS SHIPPED UNASSEMBLED IN BAG WITH LATCH ASSL*Y.
 3. INSTALLATION:
 - a. INSERT LATCH INTO HOLE IN DOOR. CHECK FOR PROPER ORIENTATION AND OPERATION OF PAWL.
 - b. INSTALL USING LOCKWASHER AND MOUNTING NUT (27mm ACROSS FLATS). MAX. TIGHTENING TORQUE 28 N.m.
 - c. INSTALL JAM NUT, LOCKWASHER, ACTUATOR, PAWL, LOCKWASHER, AND JAM NUT ON SHAFT. ADJUST JAM NUTS TO POSITION PAWL AT CORRECT GRIP (WITH LATCH CLOSED). TIGHTEN JAM NUTS (20 N.m MAX. TORQUE) USING TWO 17mm WRENCHES.
 - d. ATTACH SOUTHCO'S No. AB ROD ROLLER SYSTEM TO THE ACTUATOR.

CAUTION: ADJUST PAWL SO THAT NO MORE THAN 7.9 N.m TORQUE IS REQUIRED TO CLOSE LATCH.



DOOR PREPARATION

