

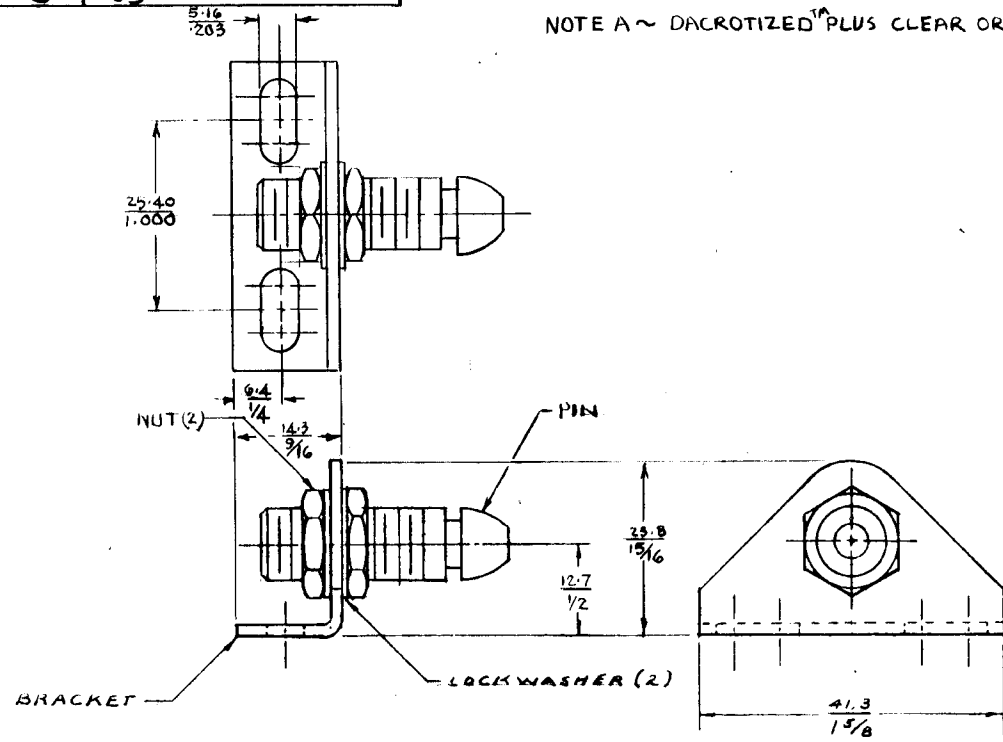
SOUTHCO, INC.
CONCORDVILLE, PA.

KEEPER SUB-ASSEMBLY

DATE	DRAWN	CHKD	SCALE	DRAWING NUMBER
9-28-84	ESH		N.T.S.	J-E2-55-101-10

REV. LET.	DATE	BY-CHKD	REVISIONS	ITEM	PART N2	MATERIAL	FINISH
A	6-12-86	RHA	PRN E2-18	SUB-ASST.	E2-55-101-10		
B	1-28-88	MN	PRN Q-245 (DAC.NUTS)	BRACKET		STEEL	DACROTIZED™
C	3-8-88	JSS	PRN: E2-22	PIN		STEEL	DACROTIZED™
D	6-14-89	CLB	PRN: E2-30	NUT (2 REQ'D)		STEEL	NOTE A
E	3-1-91	AAB	PRN: 62-350	LOCKWASHER (2 REQ'D)		STEEL	DACROTIZED™
F	6-13-91	JMB	PRN: 62-350 A				
G	1/2 JAN 93	JC	PRN: S-1-03				

NOTE A ~ DACROTIZED™ PLUS CLEAR ORGANIC COATING.



PROPRIETARY ITEM - EXCEPT FOR USES EXPRESSLY GRANTED IN WRITING, INFORMATION DISCLOSED HEREON IS CONFIDENTIAL AND ALL RIGHTS, PATENT AND OTHERWISE, ARE RESERVED BY SOUTHCO, INC.

MILLIMETER/INCH MILLIMETER
INCH

TAA, DIAMOND SHAMROCK CORP.

PAT. 4,597,599

TOLERANCE UNLESS OTHERWISE NOTED
METRIC MM - TWO PLACE (.XX) ± ONE PLACE (.X) ±
INCH - DECIMALS ± FRACTIONS ± ANGLES ±

DRAWING NUMBER
J-E2-55-101-10