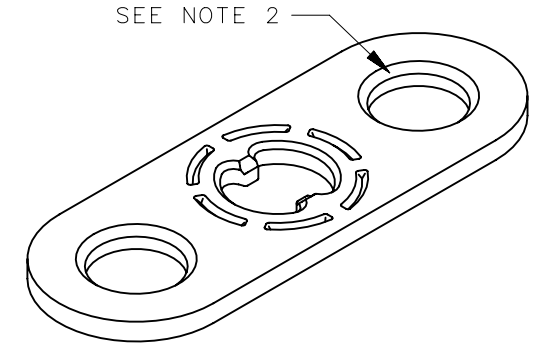
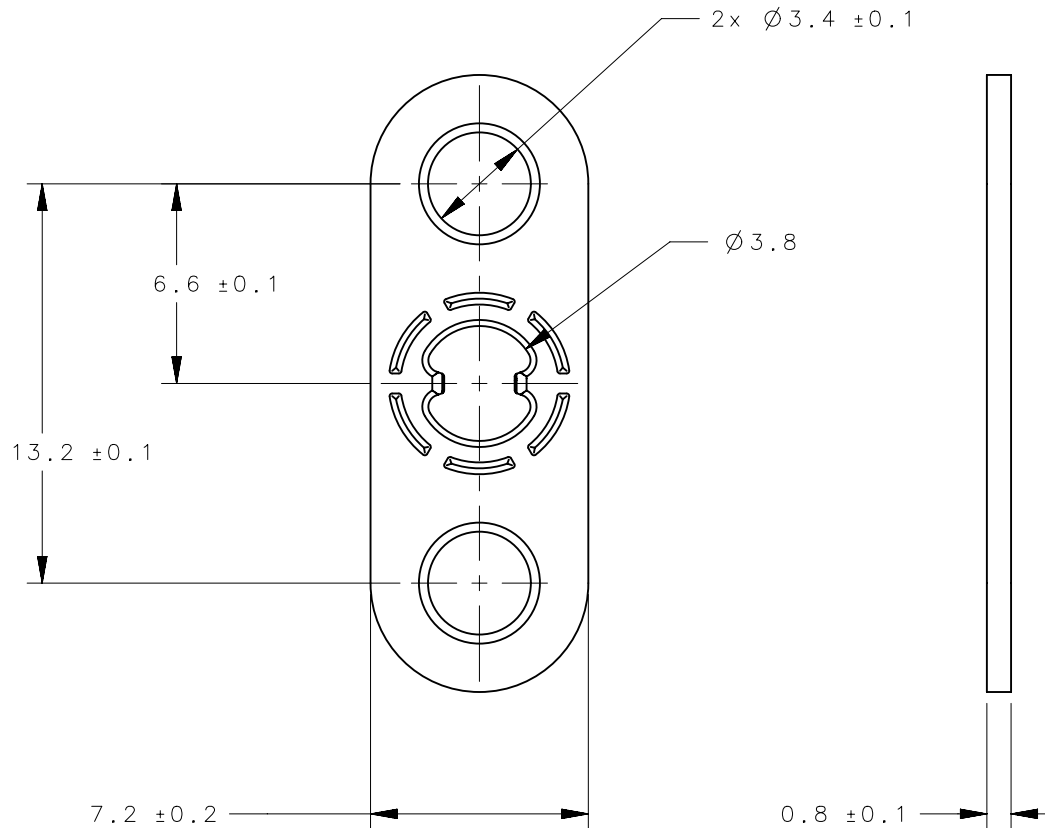


REVISION HISTORY			
REV	DATE	BY	DESCRIPTION
D	07SEP2017	MJS/JCG	PRN: P2017-1189



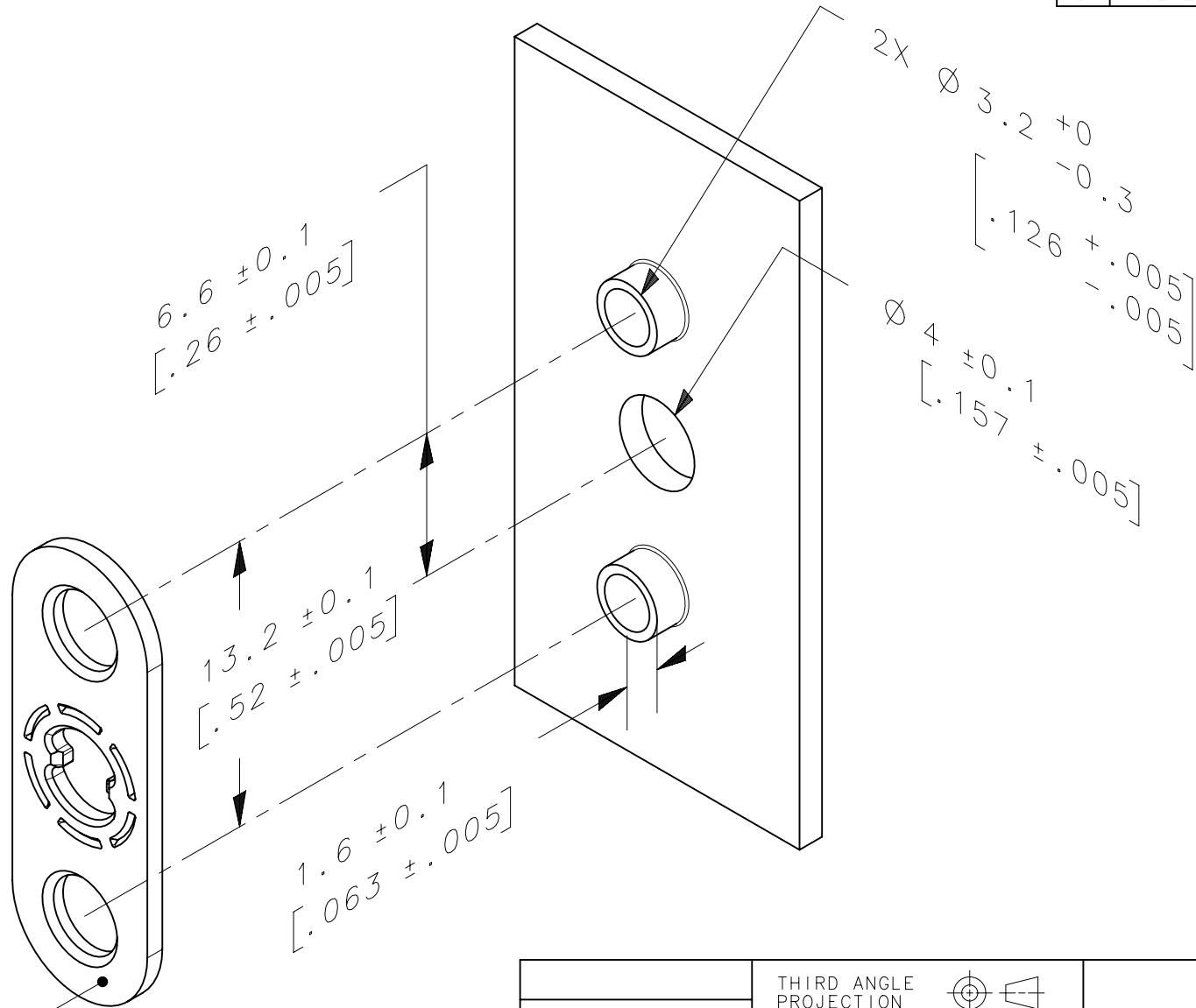
SEE SHEET 2 FOR INSTALLATION.

NOTES:

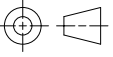

1. RoHS COMPLIANT.
2. MATING POST OD TO BE $\varnothing 3.2+0/-0.3$.
3. COSMETIC SPECIFICATION:
ALL SURFACES, UNLESS OTHERWISE NOTED, ARE TO CONFORM TO A CLASS "C" DESIGNATION AS DESCRIBED IN SOUTHCO COSMETIC SPECIFICATION:
S-121-02 FOR ZINC PLATING

D9-61-11	RECEPTACLE	STEEL	ZINC PLATE
PART NUMBER	TYPE OF COMPONENT	MATERIAL	FINISH
	THIRD ANGLE PROJECTION	 CONNECT • CREATE • INNOVATE	
	MILLIMETERS [IN]		
SURFACE AREA	TOLERANCES UNLESS OTHERWISE NOTED	DESCRIPTION D9 CRIMP ON RECEPTACLE, FLAT STYLE, #3.5 SIZE	
VOLUME	ALL DIMENSIONS WITHOUT TOLERANCES ARE FOR REFERENCE ONLY.	SIZE A4	SYSTEM NX
PROPRIETARY ITEM EXCEPT FOR USES EXPRESSLY GRANTED IN WRITING, INFORMATION DISCLOSED HEREON IS CONFIDENTIAL AND ALL RIGHTS, PATENT AND OTHERWISE, ARE RESERVED BY SOUTHCO, INC.	PER ASME Y14.5M-1994	DWG NO. J-D9-61	DATE 05JAN2016
		DRAWN BY IR	SCALE DNS
			SHEET 1 OF 2

REVISION HISTORY			
REV	DATE	BY	DESCRIPTION
D	07SEP2017	MJS/JCG	PRN: P2017-1189



INSTALL FLAT RECEPTACLE WITH CHAMFERS FACING AWAY FROM PANEL.

	THIRD ANGLE PROJECTION				 CONNECT • CREATE • INNOVATE		
	MILLIMETERS [IN]						
	TOLERANCES UNLESS OTHERWISE NOTED	DESCRIPTION					
SURFACE AREA	mm ²	D9 CRIMP ON RECEPTACLE INSTALLATION					
VOLUME	mm ³	ALL DIMENSIONS WITHOUT TOLERANCES ARE FOR REFERENCE ONLY.		SIZE	SYSTEM	DWG NO.	
PROPRIETARY ITEM		A4	NX	J-D9-61			
EXCEPT FOR USES EXPRESSLY GRANTED IN WRITING, INFORMATION DISCLOSED HEREON IS CONFIDENTIAL AND ALL RIGHTS, PATENT AND OTHERWISE, ARE RESERVED BY SOUTHCO, INC.		PER ASME Y14.5M-1994	DRAWN BY	MJS	DATE	14JUN2016	SHEET 2 OF 2
					SCALE	DNS	