

REVISION HISTORY			
REV	DATE	BY	DESCRIPTION
D	25OCT2017	MJS/JCG	PRN: P2017-1189

MATERIAL AND FINISH: RoHS COMPLIANT
 STUD AND FERRULE: STEEL, HARDENED,
 ZINC PLATE PLUS SEALER
 SPRING: MUSIC WIRE, ZINC PLATE
 KNOB: 6000 SERIES ALUMINUM, NATURAL
 OR WITH POWDER COAT

ASSEMBLY PART NUMBER

D9-47-130A₄-KEEE

A₁ - INSTALL

1 = 0.9 - 1.2 PANEL ("A")

A₂ - STUD OD

3 = Ø 3.5 STUD OD

A₃ - RECESS

0 = NO RECESS

A₄ - STUD LENGTH

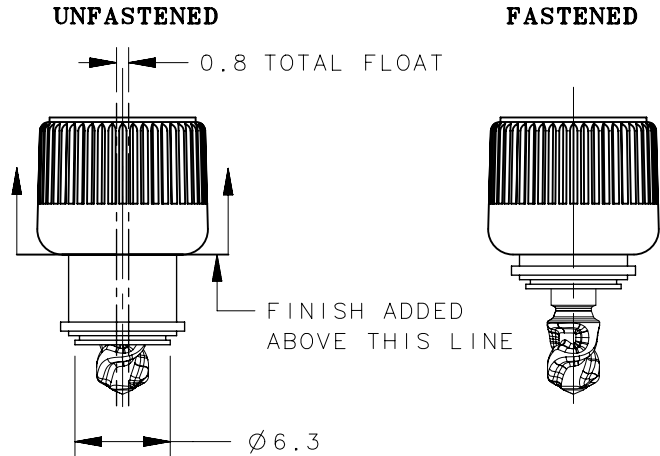
1
2
3
4

K - KNOB STYLE

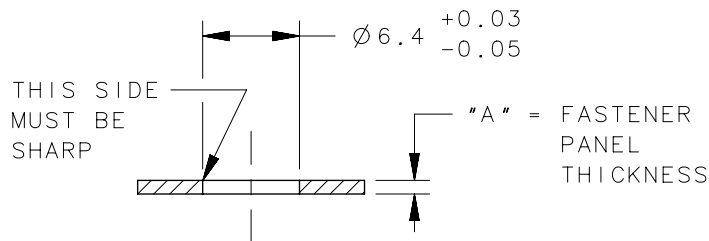
K = KNURLED

EEE - KNOB COLOR

BLANK = METAL,
 BRIGHT
 SEE J-47-0-3 FOR
 ADDITIONAL SUFFIXES



FASTENER PANEL PREPARATION



TO INSTALL FASTENER:

1. PUNCH HOLE IN PANEL PER PANEL PREPARATION VIEW.
2. INSERT FASTENER AND PRESS INTO PANEL USING A BACK UP TOOL WITH CLEARANCE HOLE OF Ø 3.8±0.2 FOR THE STUD END.

	THIRD ANGLE PROJECTION	
	MILLIMETERS [IN]	
	TOLERANCES UNLESS OTHERWISE NOTED	
	ALL DIMENSIONS WITHOUT TOLERANCES ARE FOR REFERENCE ONLY.	
PROPRIETARY ITEM	EXCEPT FOR USES EXPRESSLY GRANTED IN WRITING, INFORMATION DISCLOSED HEREON IS CONFIDENTIAL AND ALL RIGHTS, PATENT AND OTHERWISE, ARE RESERVED BY SOUTHCO, INC.	
	PER ASME Y14.5M-1994	

NO.	PART NUMBER	QTY	TYPE OF COMPONENT
4	-	1	FERRULE
3	-	1	STUD
2	-	1	SPRING
1	-	1	KNOB
-	D9-47-130A-KEEE	-	ASSEMBLY

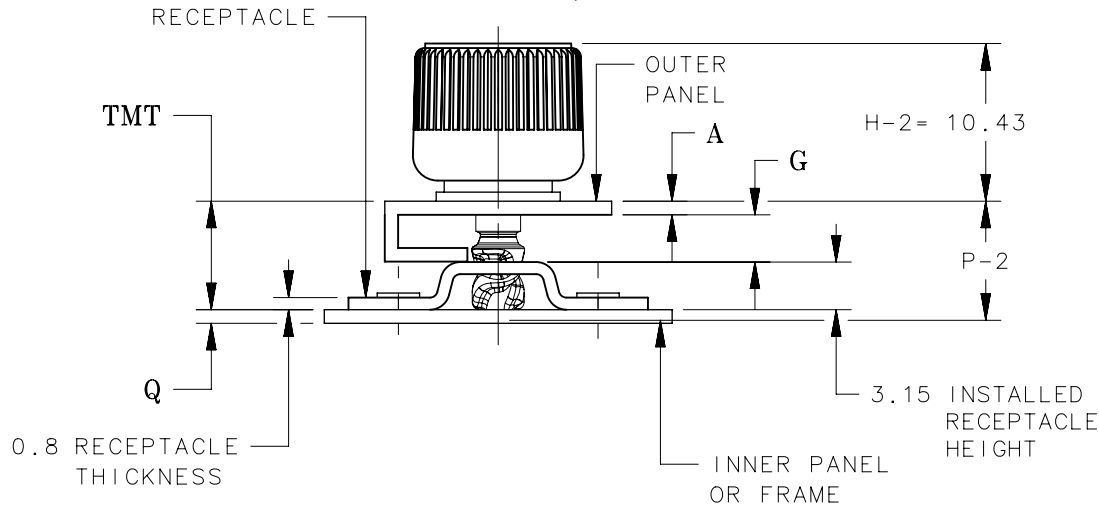
southco [®]			
CONNECT • CREATE • INNOVATE			
DESCRIPTION			
QUICK ACCESS FASTENER			
D9-47 PRESS-IN STYLE, 3.5 STUD SIZE			
SIZE	SYSTEM	DWG NO.	
A4	NX	J-D9-47-130-K	
DRAWN BY	DATE	SCALE	SHEET
IR/	10 DEC 15	DNS	1 OF 3

STUD LENGTH 2 SHOWN IN ALL VIEWS.

REVISION HISTORY			
REV	DATE	BY	DESCRIPTION
D	25OCT2017	MJS/JCG	PRN: P2017-1189

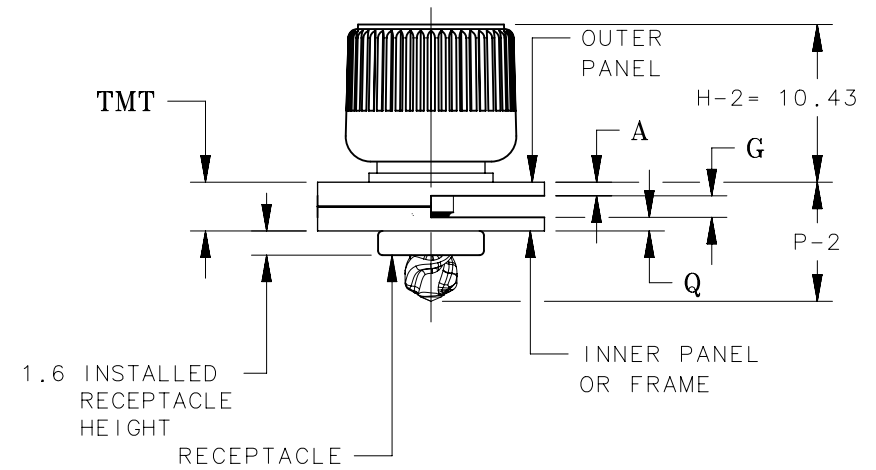
**WITH SADDLE RECEPTACLE D9-62-11
(ORDER SEPARATELY)**

$TMT = A + G + 3.15$



**WITH PRESS-IN RECEPTACLE D9-63-11
(ORDER SEPARATELY)**

$TMT = A + G + Q$



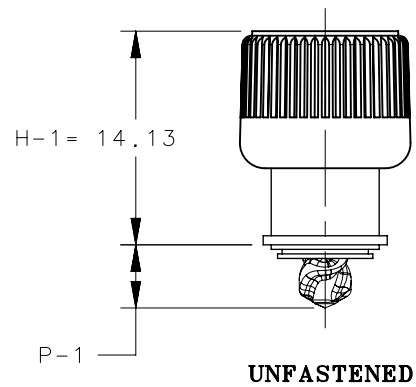
SADDLE STYLE RECEPTACLE						
STUD ASSEMBLY PART NUMBER	STUD LENGTH	P-1 MAX	P-2 MAX	TMT RANGE		
				MIN.	NOMINAL	MAX.
D9-47-1301-K	1	4.6	8.3	5.5	6.2	6.4
D9-47-1302-K	2	5.6	9.3	6.5	7.2	7.4
D9-47-1303-K	3	6.6	10.3	7.5	8.2	8.4
D9-47-1304-K	4	7.6	11.3	8.5	9.2	9.4

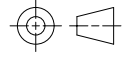
SEE J-D9-62 FOR SADDLE RECEPTACLE INFORMATION

PRESS-IN STYLE RECEPTACLE						
STUD ASSEMBLY PART NUMBER	STUD LENGTH	P-1 MAX	P-2 MAX	TMT RANGE		
				MIN.	NOMINAL	MAX.
D9-47-1301-K	1	STUD LENGTH NOT VIABLE				
D9-47-1302-K	2	5.6	9.3	2.6	3.3	3.5
D9-47-1303-K	3	6.6	10.3	3.6	4.3	4.5
D9-47-1304-K	4	7.6	11.3	4.6	5.3	5.5

SEE J-D9-63 FOR PRESS-IN RECEPTACLE INFORMATION

- TMT = TOTAL MATERIAL THICKNESS
- A = 0.9 MIN PANEL THICKNESS
- G = GAP
- Q = 0.9 MIN FRAME THICKNESS



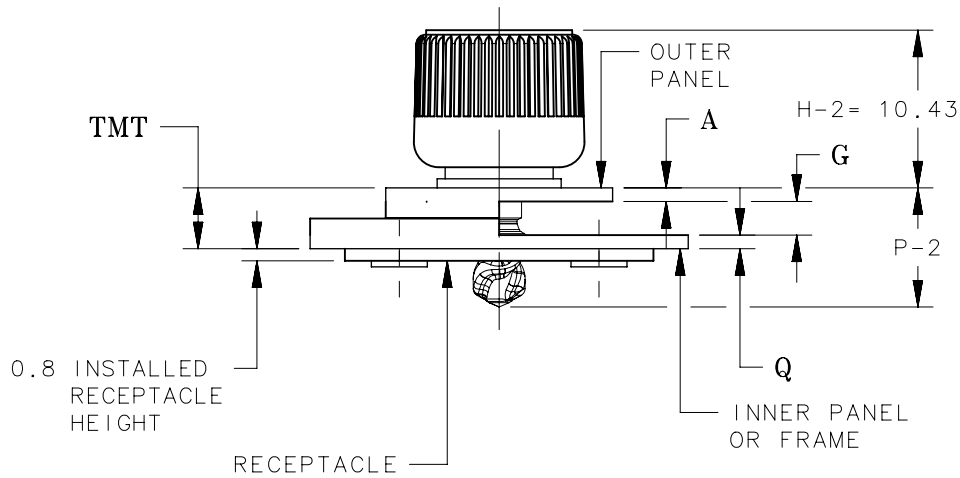
THIRD ANGLE PROJECTION 	southco [®] CONNECT • CREATE • INNOVATE	
	MILLIMETERS [IN]	
	TOLERANCES UNLESS OTHERWISE NOTED	
	ALL DIMENSIONS WITHOUT TOLERANCES ARE FOR REFERENCE ONLY.	
PROPRIETARY ITEM <small>EXCEPT FOR USES EXPRESSLY GRANTED IN WRITING, INFORMATION DISCLOSED HEREON IS CONFIDENTIAL AND ALL RIGHTS, PATENT AND OTHERWISE, ARE RESERVED BY SOUTHCO, INC.</small>		DESCRIPTION QUICK ACCESS FASTENER D9-47 PRESS-IN STYLE, 3.5 STUD SIZE
SIZE A4	SYSTEM NX	DWG NO. J-D9-47-130-K
PER ASME Y14.5M-1994	DRAWN BY IR/	DATE 10 DEC 15
	SCALE DNS	SHEET 2 OF 3

STUD LENGTH 2 SHOWN IN ALL VIEWS.

REVISION HISTORY			
REV	DATE	BY	DESCRIPTION
D	25OCT2017	MJS/JCG	PRN: P2017-1189

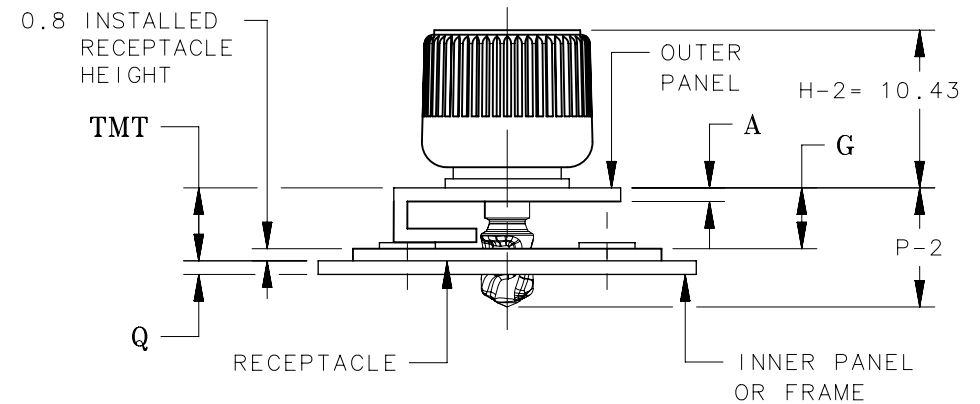
**WITH FLAT RECEPTACLE D9-61-11
MOUNTED BELOW PANEL
(ORDER SEPARATELY)**

$TMT = A+G+Q$



**WITH FLAT RECEPTACLE D9-61-11
MOUNTED ABOVE PANEL
(ORDER SEPARATELY)**

$TMT = A+G+0.8$



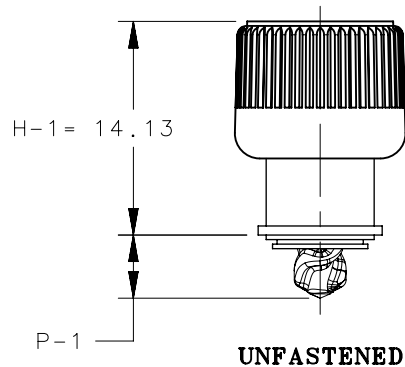
FLAT STYLE RECEPTACLE MOUNTED BELOW PANEL						
STUD ASSEMBLY PART NUMBER	STUD LENGTH	P-1 MAX	P-2 MAX	TMT RANGE		
				MIN.	NOMINAL	MAX.
D9-47-1301-K	1	4.6	8.3	2.3	3	3.2
D9-47-1302-K	2	5.6	9.3	3.3	4	4.2
D9-47-1303-K	3	6.6	10.3	4.3	5	5.2
D9-47-1304-K	4	7.6	11.3	5.3	6	6.2

SEE J-D9-61 FOR FLAT RECEPTACLE INFORMATION

FLAT STYLE RECEPTACLE MOUNTED ABOVE PANEL						
STUD ASSEMBLY PART NUMBER	STUD LENGTH	P-1 MAX	P-2 MAX	TMT RANGE		
				MIN.	NOMINAL	MAX.
D9-47-1301-K	1	4.6	8.3	3.1	3.8	4.0
D9-47-1302-K	2	5.6	9.3	4.1	4.8	5.0
D9-47-1303-K	3	6.6	10.3	5.1	5.8	6.0
D9-47-1304-K	4	7.6	11.3	6.1	6.8	7.0

SEE J-D9-61 FOR FLAT RECEPTACLE INFORMATION

TMT = TOTAL MATERIAL THICKNESS
 A = 0.9 MIN PANEL THICKNESS
 G = GAP
 Q = 0.9 MIN FRAME THICKNESS



PROPRIETARY ITEM <small>EXCEPT FOR USES EXPRESSLY GRANTED IN WRITING, INFORMATION DISCLOSED HEREON IS CONFIDENTIAL AND ALL RIGHTS, PATENT AND OTHERWISE, ARE RESERVED BY SOUTHCO, INC.</small>	THIRD ANGLE PROJECTION							
	MILLIMETERS [IN]							
	TOLERANCES UNLESS OTHERWISE NOTED	DESCRIPTION	QUICK ACCESS FASTENER					
	ALL DIMENSIONS WITHOUT TOLERANCES ARE FOR REFERENCE ONLY.	D9-47 PRESS-IN STYLE, 3.5 STUD SIZE	SIZE	SYSTEM	DWG NO.			
PER ASME Y14.5M-1994	DRAWN BY	IR/	DATE	10 DEC 15	SCALE	DNS	SHEET	3 OF 3