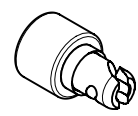
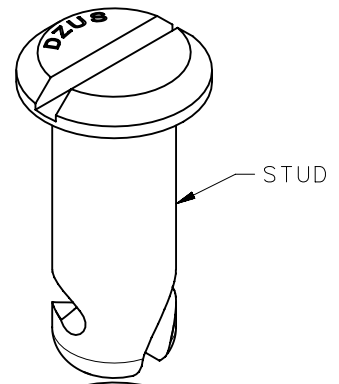


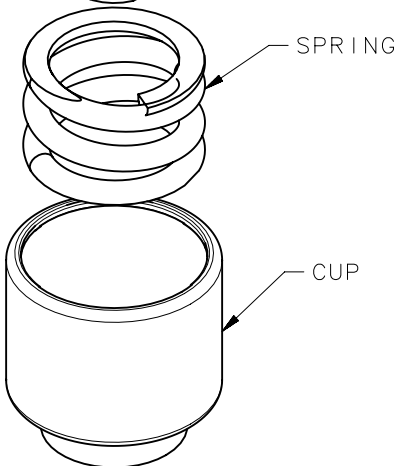
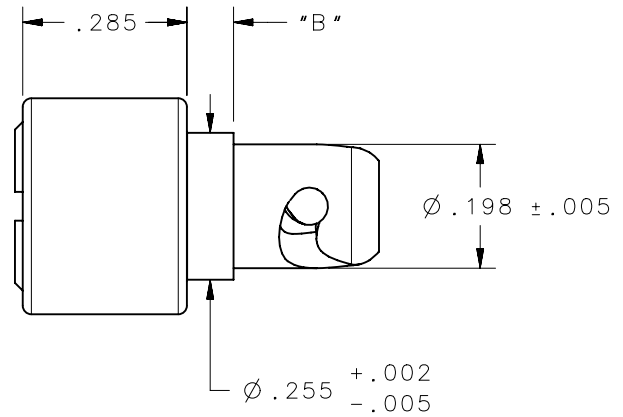
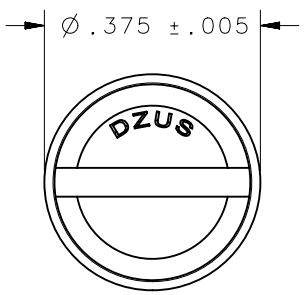
REVISION HISTORY			
REV	DATE	BY	DESCRIPTION
B	15SEP2016	CMS/JCG	PRN: P2016-2122



SCALE 1:1



STUD



SPRING

CUP

NOTES:

A. MATERIAL:

CUP - AISI 1008, 1010, 1215 OR 8620 STEEL.  
 STUD - AISI 4037 OR 8620 STEEL, HEAT TREATED TO ROCKWELL C30-38.  
 SPRING - MUSIC WIRE PER ASTM A228.

B. FINISH:

STUD AND CUP - CHROMIUM PLATE PER MIL-C-14538, BLACK, COLOR #37038, FED.595  
 SPRING - CADMIUM PLATE PER QQ-P-416, TYPE II, CLASS 2, YELLOW CHROMATE.

3501-50-241850A-K3B	D5-PA3550X1850AKBB	0.080	SEE NOTE A	SEE NOTE B
3501-44-241850A-K3B	D5-PA3544X1850AKBB	0.080		
3501-44-241850-K3B	D5PA3544X1850KBBNA	0.140		
3501-38-241850-K3B	D5PA3538X1850KBBNA	0.080		
DFCI PART NUMBER	SOUTHCO PART NUMBER	DIM "B"	MATERIAL	FINISH

CAGE CODE	72794	THIRD ANGLE PROJECTION			 CONNECT • CREATE • INNOVATE	
		INCHES [MM]				
		TOLERANCES UNLESS OTHERWISE NOTED	DESCRIPTION			
		X° . . . . . ± 2°	STUD ASSEMBLY			
		X/X . . . . . ± 1/32	SIZE	SYSTEM	DWG NO.	
		.XX . . . . . ± .015	A	NX	J-D5-PA35X1850NA	
		.XXX . . . . . ± .010				
PROPRIETARY ITEM <small>EXCEPT FOR USES EXPRESSLY GRANTED IN WRITING, INFORMATION DISCLOSED HEREON IS CONFIDENTIAL AND ALL RIGHTS, PATENT AND OTHERWISE, ARE RESERVED BY SOUTHCO, INC.</small>		PER ASME Y14.5M-1994	DRAWN BY	DATE	SCALE	SHEET
			CMS/NJF	05OCT2015	3:1	1 OF 1