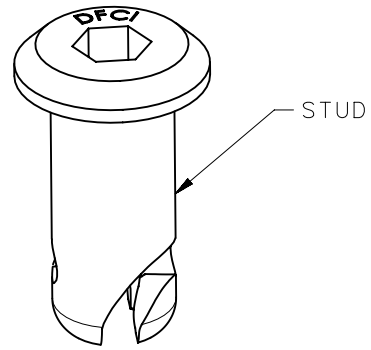
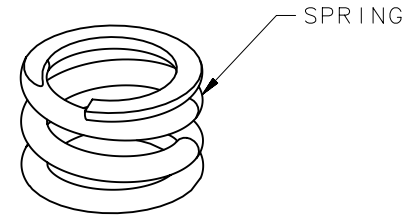


REVISION HISTORY

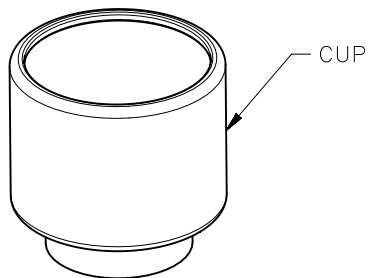
REV	DATE	BY	DESCRIPTION
B	06APR2016	CMS/JW	PRN: P2016-0746



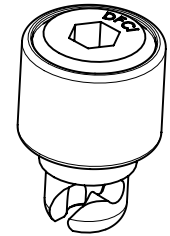
STUD



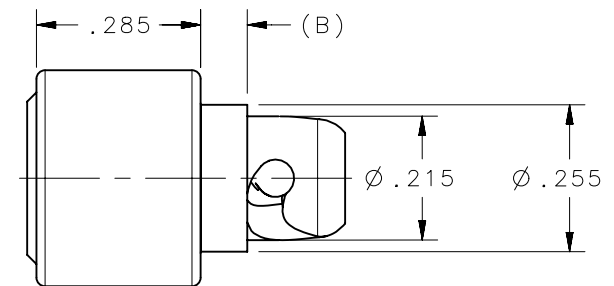
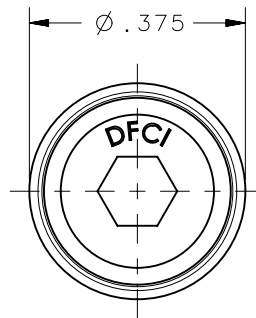
SPRING



CUP



SCALE 2:1



NOTES:

A. MATERIAL:

STUD: AISI 4037 OR 8620 STEEL,
HARDENED TO ROCKWELL C30-38.
- 4037 (HEADED)
- 8620 (TURNED)

CUP: AISI 1008, 1010, 1215 OR
8620 STEEL
- 1008/1010/1215 (STAMPED)
- 8620 (TURNED)

SPRING: MUSIC WIRE PER ASTM A228

B. SEE J-D5-0-3 FOR FINISH
INFORMATION.

3501-38-241206-Z3B	PA35-38X1206ZBB	D5PA3538X1206ZBBNA	0.08
3501-38-241206-EEG1	PA35-38X1206SEG1	D5-PA3538X1206SEG1	0.08
3501-41-241206-Z3B	PA35-41X1206ZBB	D5PA3541X1206ZBBNA	0.11
3501-41-241206-Z3CT	PA35-41X1206	D5PA3541X1206ZCTNA	0.11
3501-43-241206-Z3CT	PA35-43X1206	D5PA3543X1206ZCTNA	0.13
3501-44-241206-Z3CT	PA35-44X1206	D5PA3544X1206ZCTNA	0.14
DFCI PART NUMBER	DZUS PART NUMBER	SOUTHCO PART NUMBER	DIM "B"

THIRD ANGLE PROJECTION		 CONNECT • CREATE • INNOVATE	
INCHES [MM]			
TOLERANCES UNLESS OTHERWISE NOTED		DESCRIPTION HEX HEAD STUD ASSEMBLY	
ALL DIMENSIONS WITHOUT TOLERANCES ARE FOR REFERENCE ONLY.		SIZE A	SYSTEM NX
PROPRIETARY ITEM <small>EXCEPT FOR USES EXPRESSLY GRANTED IN WRITING, INFORMATION DISCLOSED HEREON IS CONFIDENTIAL AND ALL RIGHTS, PATENT AND OTHERWISE, ARE RESERVED BY SOUTHCO, INC.</small>		DWG NO. J-D5-PA35X1206NA	
PER ASME Y14.5M-1994		DRAWN BY CMS/JW	DATE 02MAR2016
		SCALE 3:1	SHEET 1 OF 1