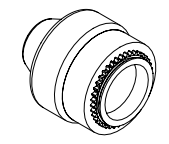
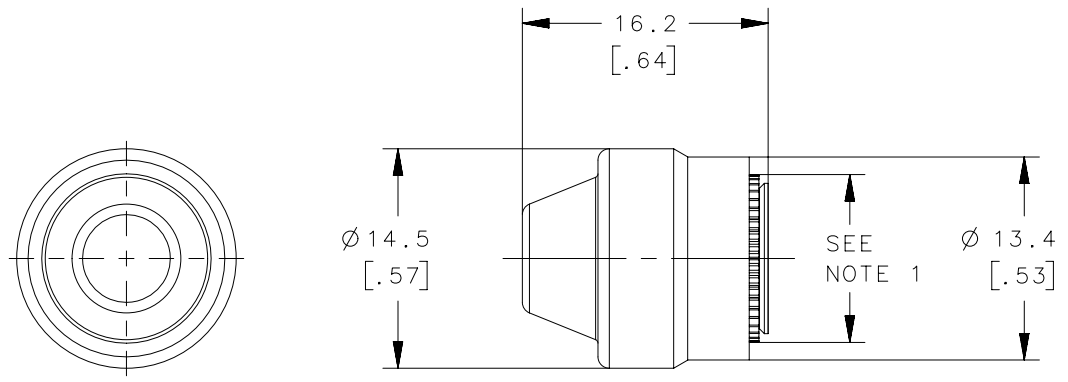
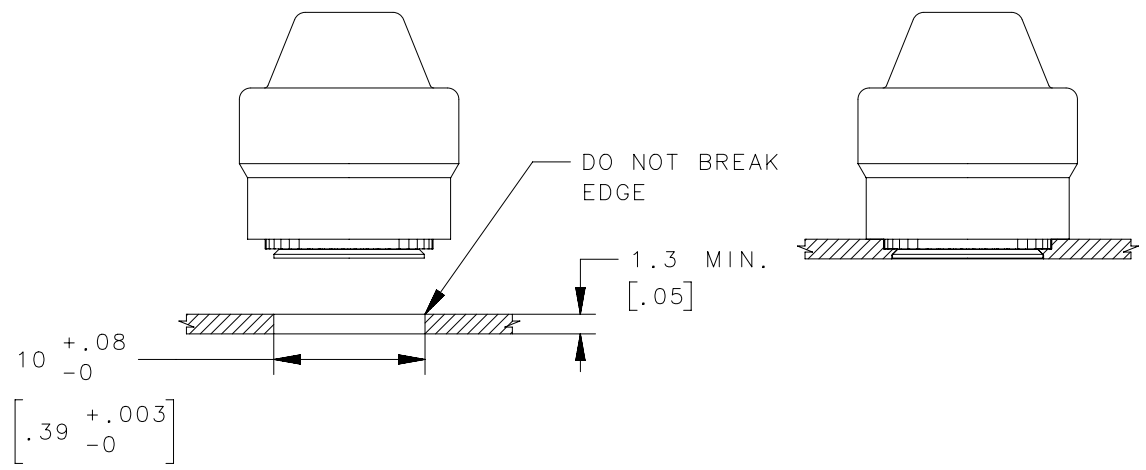


REVISION HISTORY			
REV	DATE	BY	DESCRIPTION
B	16 NOV 2011	DMS/YGC	PRN: P2011-1487



REF. VIEW
SCALE 1:1



D8-336-110-190	CARBON STEEL	ZINC PLATE
D8-336-110-121	CARBON STEEL	SILVER GEOMET
PART NUMBER	MATERIAL	FINISH

- NOTE:
1. RECOMMENDED MOUNTING HOLE SIZE- $\varnothing 10.08 [0.40] / \varnothing 10.0 [0.39]$
MINIMUM PANEL THICKNESS 1.30 [0.05].
 2. FOR USE IN LOW CARBON STEELS, ALUMINIUM AND STAINLESS STEELS IN THE ANNEALED CONDITION THAT ARE RB85 OR SOFTER.
 3. USE INSTALLATION TOOL D3-336-119-190.

<p>THIRD ANGLE PROJECTION</p> <p>MILLIMETERS [IN]</p> <p>TOLERANCES UNLESS OTHERWISE NOTED</p> <p>ALL DIMENSIONS WITHOUT TOLERANCES ARE FOR REFERENCE ONLY.</p> <p>PROPRIETARY ITEM</p> <p>EXCEPT FOR USES EXPRESSLY GRANTED IN WRITING, INFORMATION DISCLOSED HEREON IS CONFIDENTIAL AND ALL RIGHTS, PATENT AND OTHERWISE, ARE RESERVED BY SOUTHCO, INC.</p>	<p>PER ASME Y14.5M-1994</p>		<p>DESCRIPTION</p> <p>PANEX SIZE 6 PRESS IN REAR MOUNT INSERT</p>		<p>SIZE</p> <p>A4</p>	<p>SYSTEM</p> <p>NX</p>	<p>DWG NO.</p> <p>J-D8-336-110</p>
	<p>DRAWN BY</p> <p>M. WALDREN</p>		<p>DATE</p> <p>19 MAR 2009</p>	<p>SCALE</p> <p>2:1</p>	<p>SHEET</p> <p>1 OF 1</p>		
	<p>southco[®]</p> <p>CONNECT • CREATE • INNOVATE</p>						
	<p>DESCRIPTION</p> <p>PANEX SIZE 6 PRESS IN REAR MOUNT INSERT</p>						