

POSITION NUMBER	ROTATION	PIN POSITION
1	0°	
2	45°	
3	90°	
4	135°	
5	180°	
6	225°	
7	270°	
8	315°	

southco		PROPRIETARY ITEM - EXCEPT FOR USES EXPRESSLY GRANTED IN WRITING INFORMATION DISCLOSED HEREON IS CONFIDENTIAL AND ALL RIGHTS PATENT AND OTHERWISE ARE RESERVED BY SOUTHCO, INC.	
REV	DATE	DRAWN/CHKD	DESCRIPTION
A	29JAN2007	DLH	RELEASED FOR PRODUCTION

ALIGNMENT KEYING MODULE - (A2)				DRAWING NUMBER	
ATCA - MIDPLANE				J-CN-78	
DATE	DRAWN	CHKD	SCALE		
04OCT2006	DLH	XXX	3:1		

MILLIMETERS

ALL DIMENSIONS WITHOUT TOLERANCES ARE FOR REFERENCE ONLY.

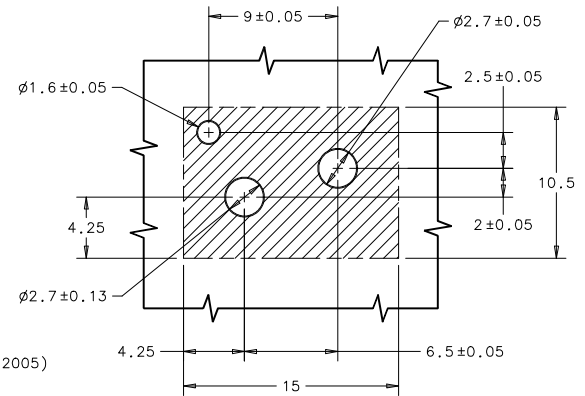
THIRD ANGLE PROJECTION

A3 PAPER SIZE

PART NUMBER: CN-78-**X**-**Y**

PIN 1 POSITION NUMBER
(SEE TABLE)

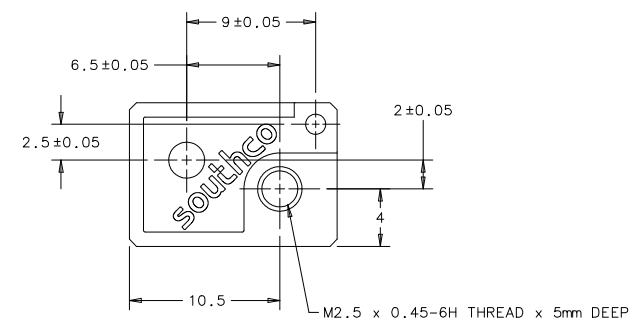
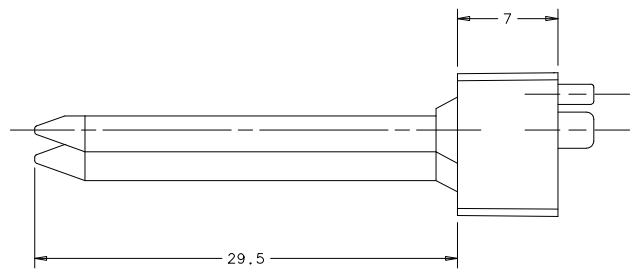
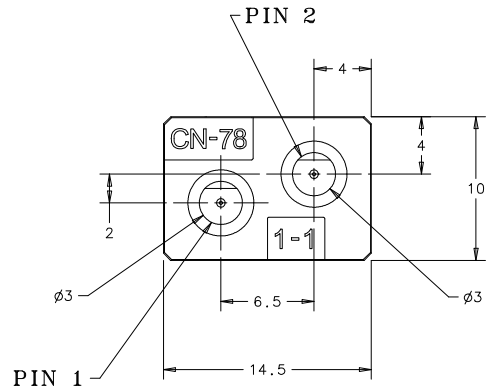
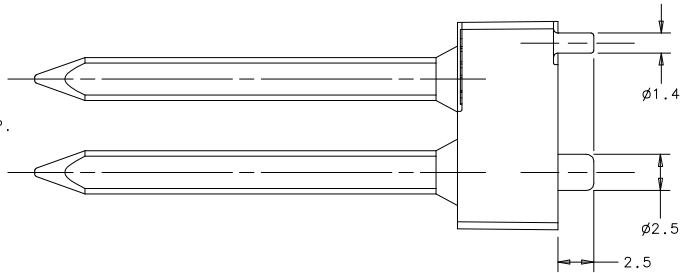
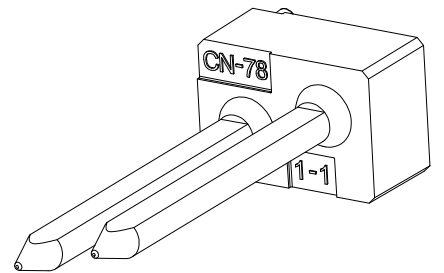
PIN 2 POSITION NUMBER
(SEE TABLE)



PANEL PREPARATION

- NOTES:
- A. MATERIAL AND FINISH:
DIE CAST ZINC, NICKEL PLATE PER SAE-AMS QQ-N-290 CLASS 1 GRADE G.
 - B. KEYING MODULE CONFORMS TO: AdvancedTCA®PICMG®3.0 Revision 2.0
AdvancedTCA®Base Specification (March 18, 2005)
 - C. COSMETIC SPECIFICATION:
ALL SURFACES UNLESS OTHERWISE NOTED ARE TO CONFORM TO A CLASS *C* DESIGNATION AS DESCRIBED IN SOUTHCO COSMETIC SPECIFICATION: S-121-02 FOR ZINC PLATING

- D. RoHS COMPLIANT.
- E. PACKAGED IN TRAYS OF 60.
- F. PICMG AND THE PICMG LOGO ARE REGISTERED TRADEMARKS OF THE PCI INDUSTRIAL COMPUTERS MANUFACTURERS GROUP.
- G. AdvancedTCA, ATCA AND THE AdvancedTCA AND ATCA LOGOS ARE TRADEMARKS OF THE PCI INDUSTRIAL COMPUTERS MANUFACTURERS GROUP.
- H. CN-78-X-Y MATES WITH SOUTHCO PART NUMBER CN-69-X-Y.
(Ex. CN-78-5-5 WILL MATE WITH SOUTHCO PART NUMBER CN-69-5-5)
(Ex. CN-78-3-8 WILL MATE WITH SOUTHCO PART NUMBER CN-69-3-8)



PART NUMBER: CN-78-1-1 SHOWN