

POSITION NUMBER	ROTATION	RECEPTACLE POSITION
1	0°	
2	45°	
3	90°	
4	135°	
5	180°	
6	225°	
7	270°	
8	315°	
9	N/A	
0	N/A	SEE DETAIL A-A

<b>southco</b>		PROPRIETARY ITEM - EXCEPT FOR USES EXPRESSLY GRANTED IN WRITING INFORMATION DISCLOSED HEREON IS CONFIDENTIAL AND ALL RIGHTS PATENT AND OTHERWISE ARE RESERVED BY SOUTHCO, INC.	
REV	DATE	DRAWN/CHKD	DESCRIPTION
G	13JUL2007	DLH/AJH	PRN: P2007-0927
H	03JUL2010	ACH	PRN: P2010-0693
I	27MAR2014	CMS/DGJ	PRN: P2014-0624
J	21APR2014	CMS/JCG	PRN: P2014-0785
K	08SEP2014	CMS/NJF	PRN: P2014-1777

ALIGNMENT RECEPTACLE MODULE - (K1/K2)  
ATCA - FRONT BOARD

DATE	DRAWN	CHKD	SCALE	DRAWING NUMBER
26JAN2006	DLH		3:1	J-CN-69

**MILLIMETERS**

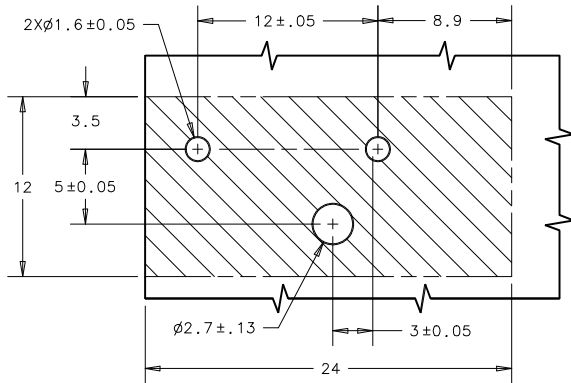
ALL DIMENSIONS WITHOUT TOLERANCES ARE FOR REFERENCE ONLY.



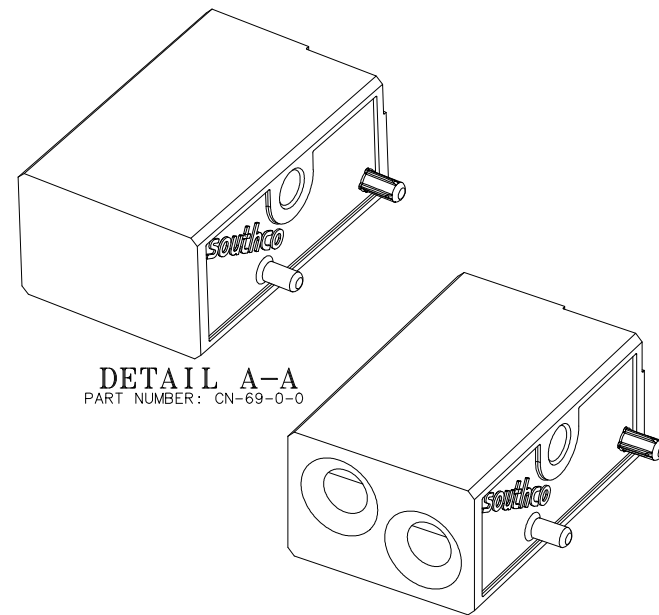
PART NUMBER: CN-69- X - Y

RECEPTACLE 1 POSITION NUMBER  
(SEE TABLE)

RECEPTACLE 2 POSITION NUMBER  
(SEE TABLE)

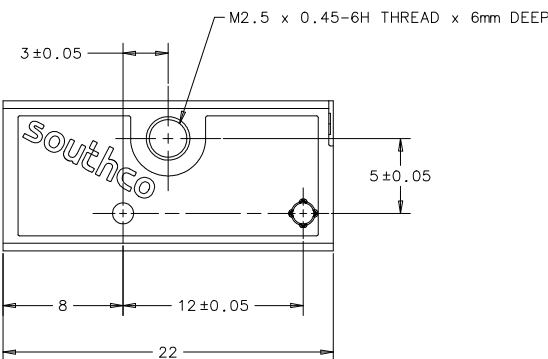
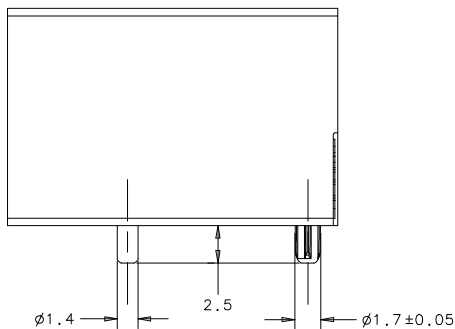


PCB PREPARATION



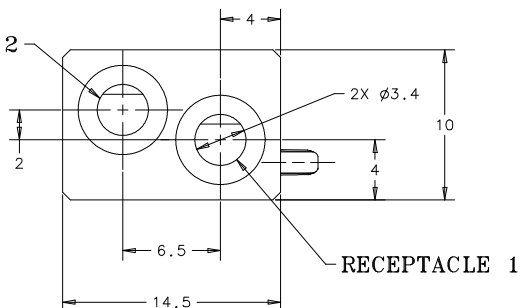
DETAIL A-A  
PART NUMBER: CN-69-0-0

PART NUMBER: CN-69-1-1

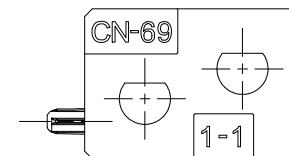


PART NUMBER: CN-69-1-1 SHOWN

RECEPTACLE 2



RECEPTACLE 1



NOTES:

- A. MATERIAL AND FINISH:  
DIE CAST ZINC, NICKEL PLATE PER SAE-AMS QQ-N-290 CLASS 1 GRADE G.
- B. RECEPTACLE MODULE CONFORMS TO: AdvancedTCA<sup>®</sup> PICMG<sup>®</sup> 3.0 Revision 2.0  
AdvancedTCA<sup>®</sup> Base Specification (March 18, 2005)
- C. COSMETIC SPECIFICATION:  
ALL SURFACES UNLESS OTHERWISE NOTED ARE TO CONFORM TO A CLASS "C"  
DESIGNATION AS DESCRIBED IN SOUTHCO COSMETIC SPECIFICATION:  
S-121-02 FOR ZINC PLATING
- D. RoHS COMPLIANT.
- E. PACKAGED IN TRAYS OF 70.
- F. PICMG AND THE PICMG LOGO ARE REGISTERED TRADEMARKS OF THE PCI INDUSTRIAL COMPUTERS MANUFACTURERS GROUP.
- G. AdvancedTCA, ATCA AND THE AdvancedTCA AND ATCA LOGOS ARE TRADEMARKS OF THE PCI INDUSTRIAL COMPUTERS MANUFACTURERS GROUP.
- H. CN-69-X-Y MATES WITH SOUTHCO PART NUMBER CN-68-X-Y.  
(Ex. CN-69-1-1 WILL MATE WITH SOUTHCO PART NUMBER CN-68-1-1)  
(Ex. CN-69-3-7 WILL MATE WITH SOUTHCO PART NUMBER CN-68-3-7)  
  
CN-69-X-Y MATES WITH SOUTHCO PART NUMBER CN-78-X-Y.  
(Ex. CN-69-1-1 WILL MATE WITH SOUTHCO PART NUMBER CN-78-1-1)  
(Ex. CN-69-2-8 WILL MATE WITH SOUTHCO PART NUMBER CN-78-2-8)  
  
CN-69-X-Y MATES WITH SOUTHCO PART NUMBER CN-80-X-Y.  
(Ex. CN-69-1-1 WILL MATE WITH SOUTHCO PART NUMBER CN-80-1-1)  
(Ex. CN-69-9-4 WILL MATE WITH SOUTHCO PART NUMBER CN-80-9-4)