

POSITION NUMBER	ROTATION	PIN POSITION
1	0°	
2	45°	
3	90°	
4	135°	
5	180°	
6	225°	
7	270°	
8	315°	

southco			PROPRIETARY ITEM - EXCEPT FOR USES EXPRESSLY GRANTED IN WRITING INFORMATION DISCLOSED HEREON IS CONFIDENTIAL AND ALL RIGHTS PATENT AND OTHERWISE ARE RESERVED BY SOUTHCO, INC.
REV	DATE	DRAWN/CHKD	DESCRIPTION
A	17MAR2006	DLH	RELEASED FOR PRODUCTION
B	30MAR2006	DLH/AJH	PRN: P2006-0502
C	19MAY2006	DLH/MJS	PRN: P2006-0714
D	21JUN2006	DLH/MJS	PRN: P2006-0867
E	16JAN2007	DLH/MJS	PRN: P2007-0094

ALIGNMENT KEYING MODULE - (A1)
ATCA - BACKPLANE

DATE	DRAWN	CHKD	SCALE
26JAN2006	DLH		3:1

DRAWING NUMBER
J-CN-68

MILLIMETERS

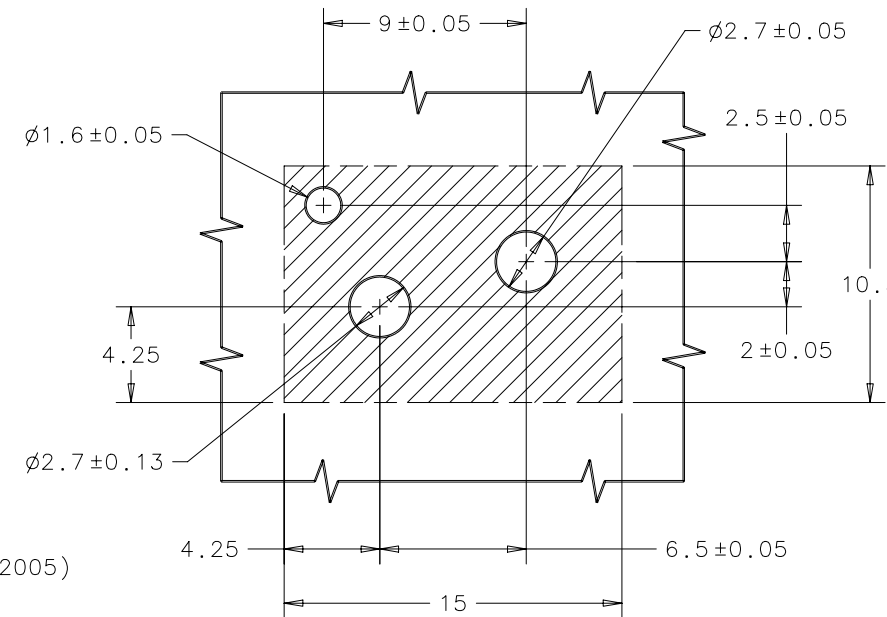
ALL DIMENSIONS WITHOUT TOLERANCES ARE FOR REFERENCE ONLY.

THIRD ANGLE PROJECTION
A3 PAPER SIZE

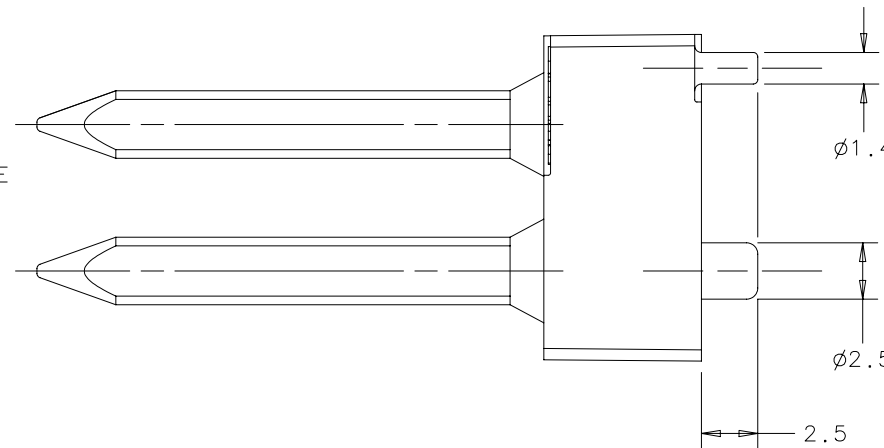
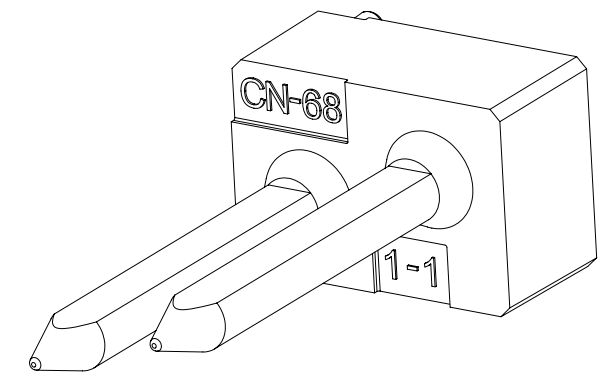
PART NUMBER: CN-68-X-Y

PIN 1 POSITION NUMBER
(SEE TABLE)

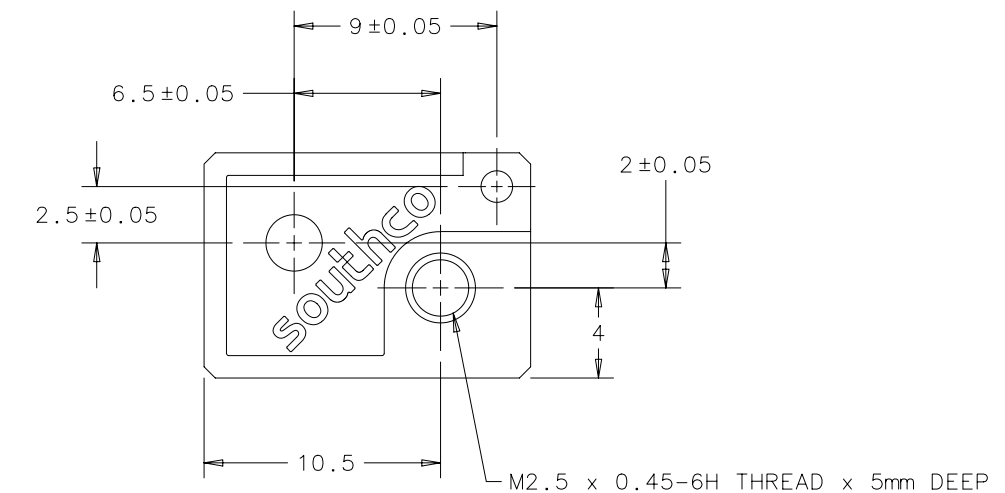
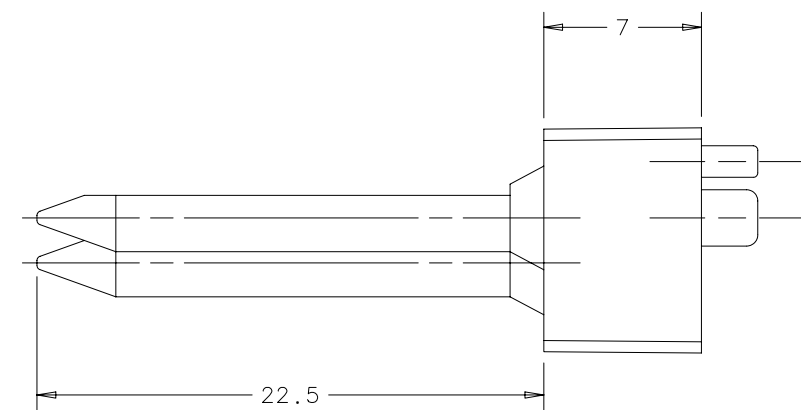
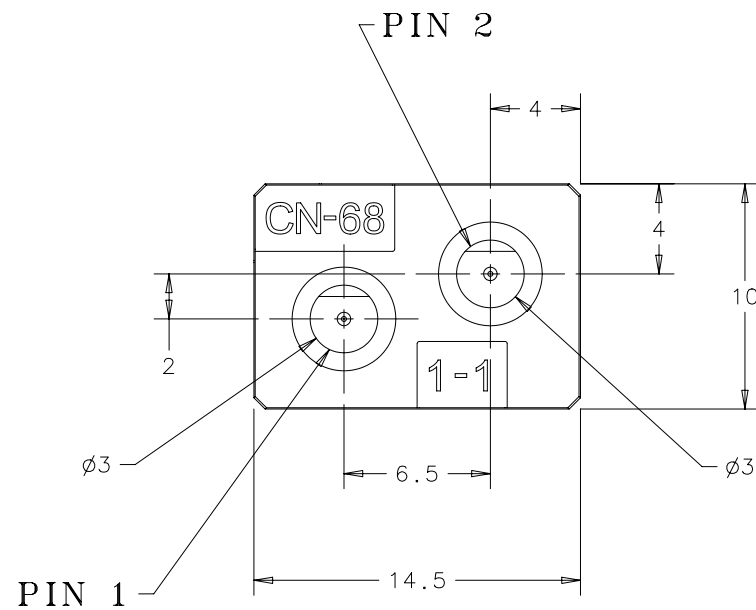
PIN 2 POSITION NUMBER
(SEE TABLE)



PANEL PREPARATION



- NOTES:
- A. MATERIAL AND FINISH:
DIE CAST ZINC, NICKEL PLATE PER SAE-AMS QQ-N-290 CLASS 1 GRADE G.
 - B. PIN BLOCK CONFORMS TO: AdvancedTCA® PICMG® 3.0 Revision 2.0
AdvancedTCA® Base Specification (March 18, 2005)
 - C. COSMETIC SPECIFICATION:
ALL SURFACES UNLESS OTHERWISE NOTED ARE TO CONFORM TO A CLASS "C" DESIGNATION AS DESCRIBED IN SOUTHCO COSMETIC SPECIFICATION:
S-121-02 FOR ZINC PLATING
 - D. RoHS COMPLIANT.
 - E. PACKAGED IN TRAYS OF 75.
 - F. PICMG AND THE PICMG LOGO ARE REGISTERED TRADEMARKS OF THE PCI INDUSTRIAL COMPUTERS MANUFACTURERS GROUP.
 - G. AdvancedTCA, ATCA AND THE AdvancedTCA AND ATCA LOGOS ARE TRADEMARKS OF THE PCI INDUSTRIAL COMPUTERS MANUFACTURERS GROUP.
 - H. CN-68-X-Y MATES WITH SOUTHCO PART NUMBER CN-69-X-Y.
(Ex. CN-68-5-5 WILL MATE WITH SOUTHCO PART NUMBER CN-69-5-5)
(Ex. CN-68-3-8 WILL MATE WITH SOUTHCO PART NUMBER CN-69-3-8)



PART NUMBER: CN-68-1-1 SHOWN