

REV	DATE	DRAWN/CHKD	DESCRIPTION
A	18JUL2006	LCR/MJS	PRN: P2006-0960
B	09AUG2006	RLR/MDY	PRN: P2006-1074

INCHES

ALL DIMENSIONS WITHOUT TOLERANCES ARE FOR REFERENCE ONLY.

THIRD ANGLE PROJECTION

B PAPER SIZE

PART NUMBER: CM-3- [] 1 [] -NUB

HOUSING LENGTHS:

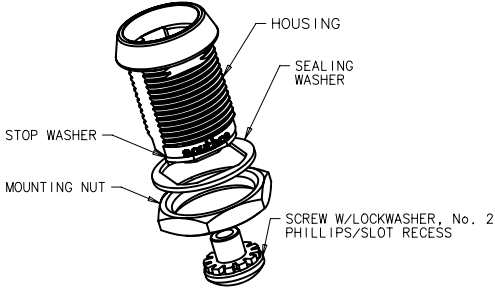
- 1 = .625
- 2 = .875
- 6 = 1.125
- 3 = 1.375
- 4 = 1.625
- 5 = 1.875

HOUSING FINISH:

- B = BLACK POWDER COATED
- C = CHROME PLATED

CAM ROTATION ANGLE:

- 01 = 12 - 3 O'CLOCK (CW)
- 09 = 12 - 9 O'CLOCK (CCW)



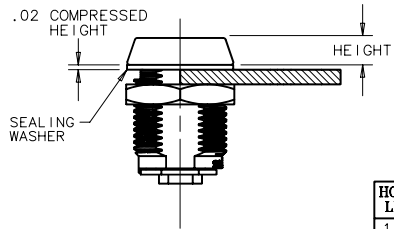
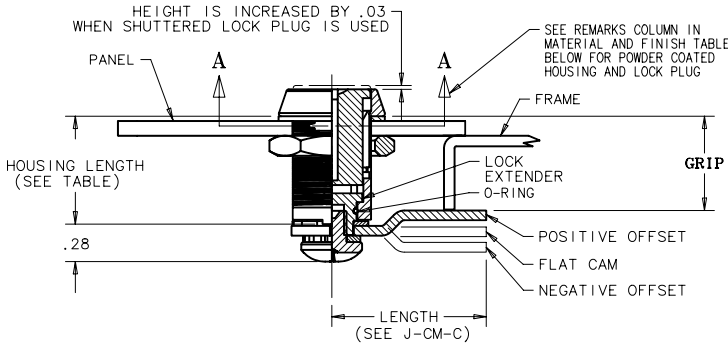
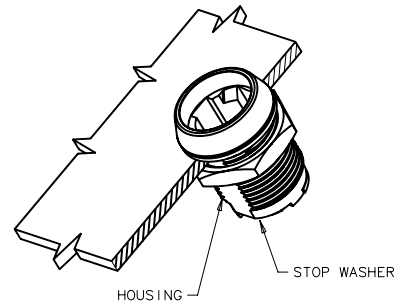
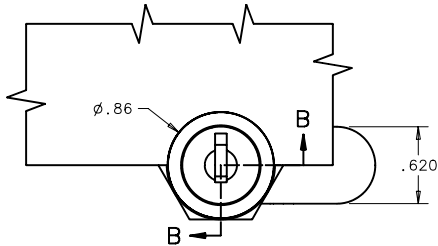
SUBASSEMBLY

PART No. CM-3-2B101-NUB SHOWN
(CAM AND LOCK PLUG ORDERED SEPARATELY)
SEE DWG J-CM-C FOR CAM PART NUMBERS
SEE DWG J-PK-39 FOR LOCK PLUG PART NUMBERS

NOTES:

- A. FOR INSTALLATION AND PANEL PREPARATION SEE DRAWING J-CM-3-A.
- B. FOR LOCKPLUG INSTALLATION, SEE DRAWING J-CM-3-B.
- C. SEE J-CM-C FOR CAM PART NUMBERS.

PART NUMBER CM-3-2B101-NUB SHOWN
ASSEMBLED WITH CAM P/N CM-C210
(CAM ORDERED SEPARATELY) AND LOCKPLUG
PK-39-72-13 (ORDERED SEPARATELY)

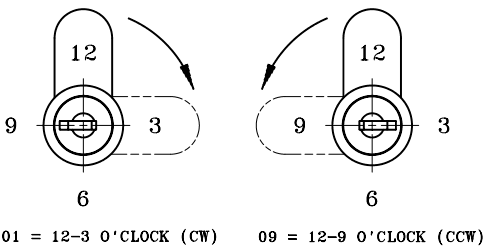


HOUSING LENGTH	HEIGHT
1	.41
2	.22
6	.22
3	.22
4	.22
5	.22

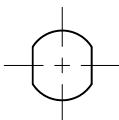
NOTES:

LOCK PLUG IS SHOWN IN THE UNLOCKED POSITION
SOLID LINE CAM DEPICTS UNLOCKED CAM POSITION
DOTTED LINE CAM DEPICTS LOCKED CAM POSITION
LOCK PLUG IN THE LOCKED POSITION IS NOT SHOWN

CAM ROTATION DIRECTION



PANEL PREPARATION ORIENTATION



MATERIAL AND FINISH

COMPONENT	MATERIAL DESCRIPTION	FINISH DESCRIPTION	REMARKS
HOUSING	DIE CAST ZINC	CHROME PLATED	HEAD IS POWDER COATED ABOVE SECTION A-A
		TRIVALENT CHROMATE CONV. COATED & POWDER COATED	
CAM	STEEL	ZINC PLATE, BRIGHT CHROMATE CONV. COATING	
O-RING	NITRILE	BLACK	
SEALING WASHER	NATURAL RUBBER(80°)	BLACK	
STOP WASHER	STEEL	ZINC PLATE, BRIGHT CHROMATE CONV. COATING	
SCREW WITH LOCKWASHER	STEEL	ZINC PLATE, BRIGHT CHROMATE CONV. COATING	
MOUNTING NUT	DIE CAST ZINC	TRIVALENT CHROMATE CONV. COATING	
LOCK EXTENDER	DIE CAST ZINC	TRIVALENT CHROMATE CONV. COATING	