

NOTES:

A. MATERIAL AND FINISH:

- HOUSING, HANDLE, BUTTON AND PAWL: DIE CAST ZINC, BLACK POWDER COATING.
- LEVER AND CRANK: DIE CAST ZINC, CLEAR CHEMICAL PROTECTIVE FILM.
- TORSION SPRING: 302 STAINLESS STEEL, PASSIVATED.
- ROLL PIN: 420 STAINLESS STEEL, PASSIVATED.
- O-RING: BUNA-N, NATURAL.
- LOCK PLUG: DIE CAST ZINC, BLACK POWDER COATING.
- SHUTTERED LOCK PLUG: DIE CAST ZINC WITH ALUMINUM, BLACK ANODIZED CAP AND 304 STAINLESS STEEL, NATURAL SHUTTER.
- KEYS: BRASS, NICKEL PLATED.
- ADJUSTING SCREW, JAM NUT, MOUNTING BRACKET AND SCREW: 1010 STEEL, ZINC PLATED WITH SEALED YELLOW CHROMATE; OR, 300 SERIES STAINLESS STEEL, PASSIVATED (SEE TABLE).

X = POWDER COATING COLOR

- CARDINAL WHITE WITH STEEL HARDWARE
- CARDINAL WHITE WITH STAINLESS STEEL HARDWARE
- SILVER METALLIC POLYESTER URETHANE WITH STEEL HARDWARE
- SILVER METALLIC POLYESTER URETHANE WITH STAINLESS STEEL HARDWARE
- BLACK WITH STEEL HARDWARE
- BLACK WITH STAINLESS STEEL HARDWARE
- SATIN SILVER WITH STEEL HARDWARE
- SATIN SILVER WITH STAINLESS STEEL HARDWARE


B. LOCKPLUG INSTALLATION:

- POSITION LOCKPLUG AND ORIENT RETAINING WAFER (LAST WAFER LOCATED AT THE BOTTOM OF LOCK) AT THE 3 O'CLOCK POSITION AND INSERT INTO THE HANDLE.
- BE SURE THE LOCKPLUG IS FULLY SEATED AGAINST THE HANDLE, THEN REMOVE KEY.

**southco**  
 PROPRIETARY ITEM - EXCEPT FOR USES EXPRESSLY GRANTED IN WRITING, INFORMATION DISCLOSED HEREON IS CONFIDENTIAL AND ALL RIGHTS PATENT AND OTHERWISE ARE RESERVED BY SOUTHCO, INC.

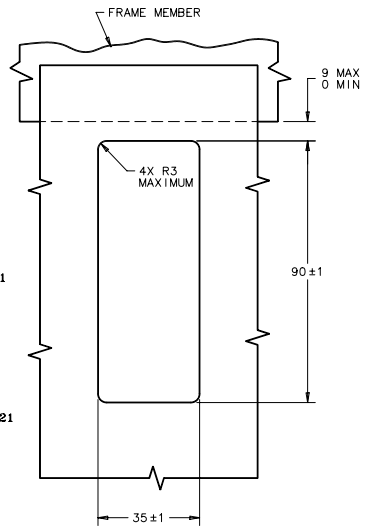
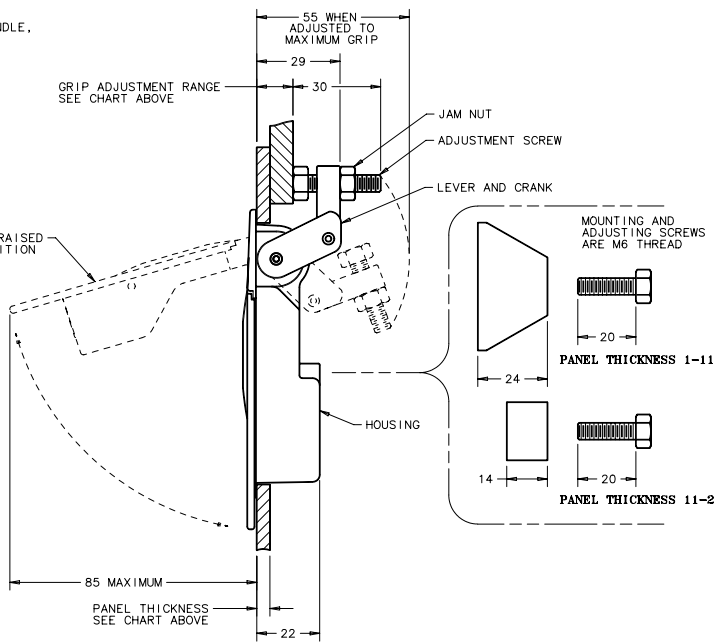
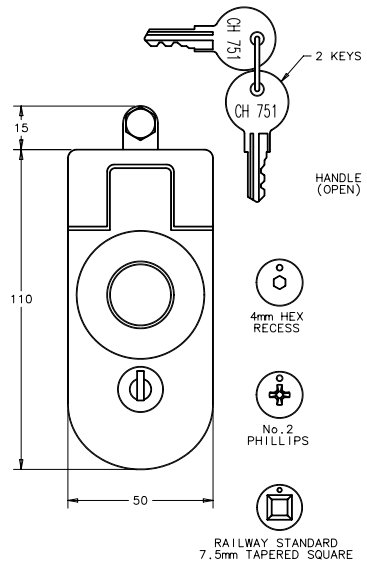
REV	DATE	DRWN/CHKD	DESCRIPTION
I	13AUG2004	VNI/ZLR	PRN: P2004-0893
J	08OCT2004	MJR/MDY	PRN: P2004-1152
K	15NOV2004	MDY/ZLR	PRN: P2004-1308

SOUTHCO No. C5 SEALED LEVER LATCH WITH KEY LOCK

DATE	DRWN	CHKD	SCALE	DRAWING NUMBER
26MAR92	JAD		0.75:1	J-C5-L1
				<b>MILLIMETERS</b>
				ALL DIMENSIONS WITHOUT TOLERANCES ARE FOR REFERENCE ONLY.
				 <b>A3 PAPER SIZE</b>

PANEL THICKNESS	SHORT LEVER GRIP RANGE*	STANDARD KEY LOCK	SHUTTERED KEY LOCK		4 MM HEX RECESS	No. 2 PHILLIPS	RAILWAY STANDARD	WITHOUT LOCK PLUG
			PLATED STEEL HARDWARE	STAINLESS STEEL HARDWARE				
1-11	1-14	C5-21-1X	C5-31-15	C5-31-16	C5-41-1X	C5-51-1X	C5-61-1X	C5-91-1X
11-21		C5-22-1X	C5-32-15	C5-32-16	C5-42-1X	C5-52-1X	C5-62-1X	C5-92-1X

\* MEDIUM LEVER GRIP RANGE AVAILABLE FROM 14 TO 29 MILLIMETERS.  
 REFERENCE DRAWING NUMBER J-C5-L2  
 LONG LEVER GRIP RANGE AVAILABLE FROM 29 TO 45 MILLIMETERS.  
 REFERENCE DRAWING NUMBER J-C5-L3



PANEL PREPARATION