

DATE	DRAWN	CHKD	SCALE
18JUN92	JGK		3/4

DRAWING NUMBER
J-C5-2

ASSEMBLY PART NUMBERS AND DESCRIPTION

PANEL THICKNESS	MED. LEVER* GRIP RANGE	BLACK ASSEMBLY WITH PLATED STEEL HARDWARE	BLACK ASSEMBLY WITH STAINLESS STEEL HARDWARE	SILVER ASSEMBLY WITH PLATED STEEL HARDWARE	SILVER ASSEMBLY WITH STAINLESS STEEL HARDWARE	CARDINAL WHITE ASSEMBLY WITH PLATED STEEL HARDWARE	CARDINAL WHITE ASSEMBLY WITH STAINLESS STEEL HARDWARE
1-11	14-29	C5-11-25	C5-11-26	C5-11-23	C5-11-24	C5-11-21	C5-11-22
11-21		C5-12-25	C5-12-26	C5-12-23	C5-12-24	C5-12-21	C5-12-22
21-31		C5-13-25	C5-13-26	C5-13-23	C5-13-24	C5-13-21	C5-13-22

* SHORT LEVER GRIP RANGE AVAILABLE FROM 1 TO 14 MILLIMETERS. REFERENCE DRAWING NUMBER J-C5-1

LONG LEVER GRIP RANGE AVAILABLE FROM 29 TO 45 MILLIMETERS. REFERENCE DRAWING NUMBER J-C5-3

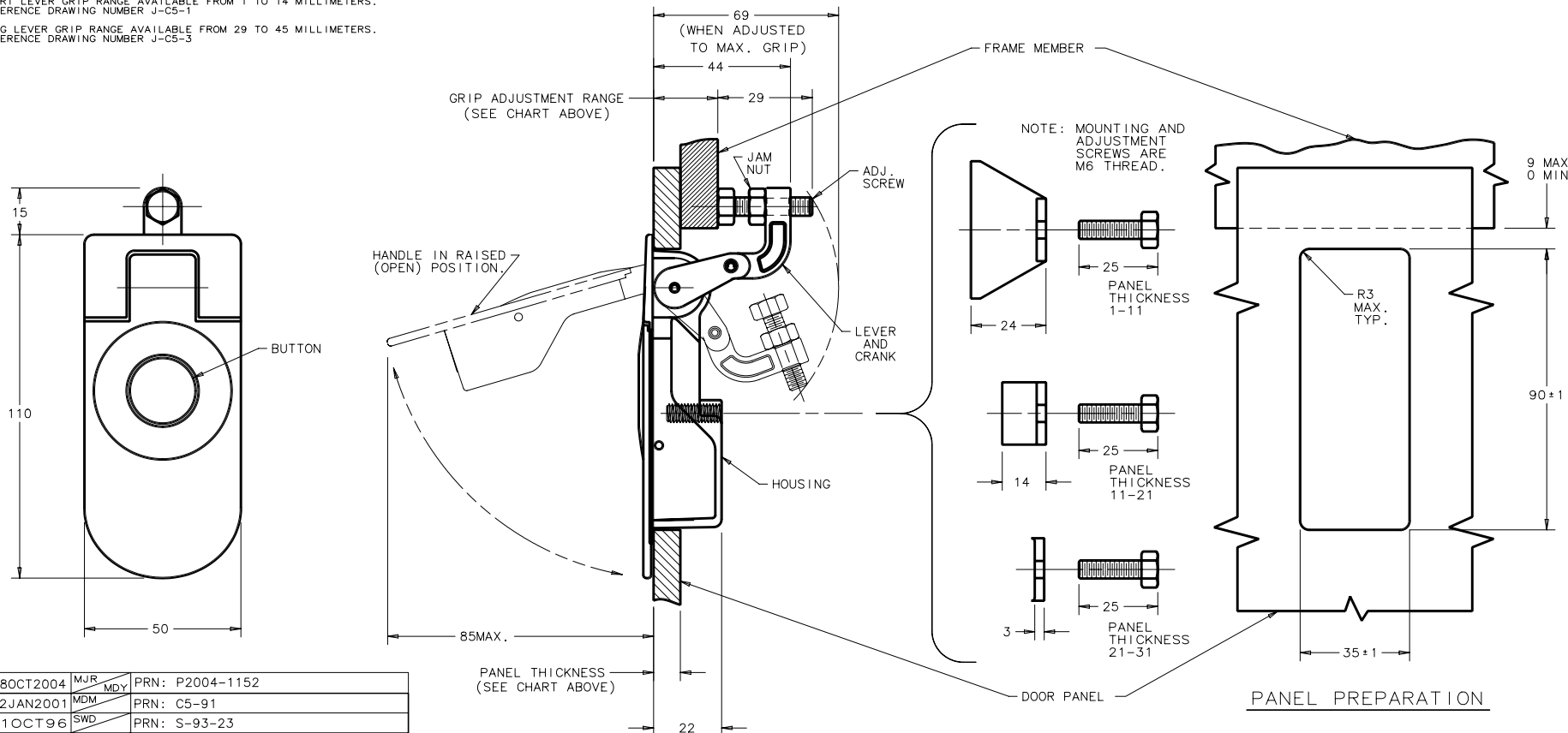
MATERIAL AND FINISH

LATCH ASSEMBLY CONSISTS OF:
 HOUSING, HANDLE AND BUTTON:
 DIE CAST ZINC, SEE TABLE FOR FINISH.
 LEVER AND CRANK: DIE CAST ZINC, COATED WITH CLEAR CHEMICAL PROTECTIVE FILM.
 BLACK TORSION SPRING: 303 STAINLESS STEEL, PASSIVATED.
 ROLL PINS: 420 STAINLESS STEEL, PASSIVATED.
 O-RINGS: BUNA-N RUBBER, NATURAL.

HARDWARE CONSISTS OF:

MOUNTING BRACKET
 MOUNTING SCREW
 ADJUSTING SCREW
 JAM NUT

1010 STEEL, ZINC PLATED WITH SEALED CHROMATE.
 OR
 300 SERIES STAINLESS STEEL, PASSIVATED.



PANEL PREPARATION

THIRD ANGLE PROJECTION,
 ALL DIMENSIONS ARE MILLIMETERS.

D	08OCT2004	MJR	MDY	PRN: P2004-1152
C	02JAN2001	MDM		PRN: C5-91
B	11OCT96	SWD		PRN: S-93-23
A	19JUL95	MDM		PRN: C5-21
REV	DATE	DRAWN	REVISIONS	

PROPRIETARY ITEM. EXCEPT FOR USES EXPRESSLY GRANTED IN WRITING TO SOUTHCO, INC. ALL RIGHTS, PATENT AND OTHERWISE ARE RESERVED BY SOUTHCO, INC.
 FORMATE 2/88