

**southco** PROPRIETARY ITEM - EXCEPT FOR USES EXPRESSLY GRANTED IN WRITING, INFORMATION DISCLOSED HEREON IS CONFIDENTIAL AND ALL RIGHTS PATENT AND OTHERWISE ARE RESERVED BY SOUTHCO, INC.

DATE: 30APR2003 VNI/MJS PRN: P2003-0339  
 19JUN2003 RLR/MJS PRN: P2003-0504  
 13AUG2004 VNI/RLR PRN: P2004-0893  
 09NOV2004 MDY/RLR PRN: P2004-1308  
 23SEP2011 MJS/DM PRN: P2011-0647  
 08MAR2012 MJS PRN: P2012-0322  
 23JUL2013 MJS/TVA PRN: P2013-1498

REV: K L M N O P Q

DESCRIPTION: No. C2 LEVER LATCH ASSEMBLY WITH LOCKING RAISED TRIGGER

DRAWN/CHKD: JGK/JGK

DATE: 23FEB93

SCALE: 1:1

DRAWING NUMBER: J-C2-32-2

MILLIMETERS

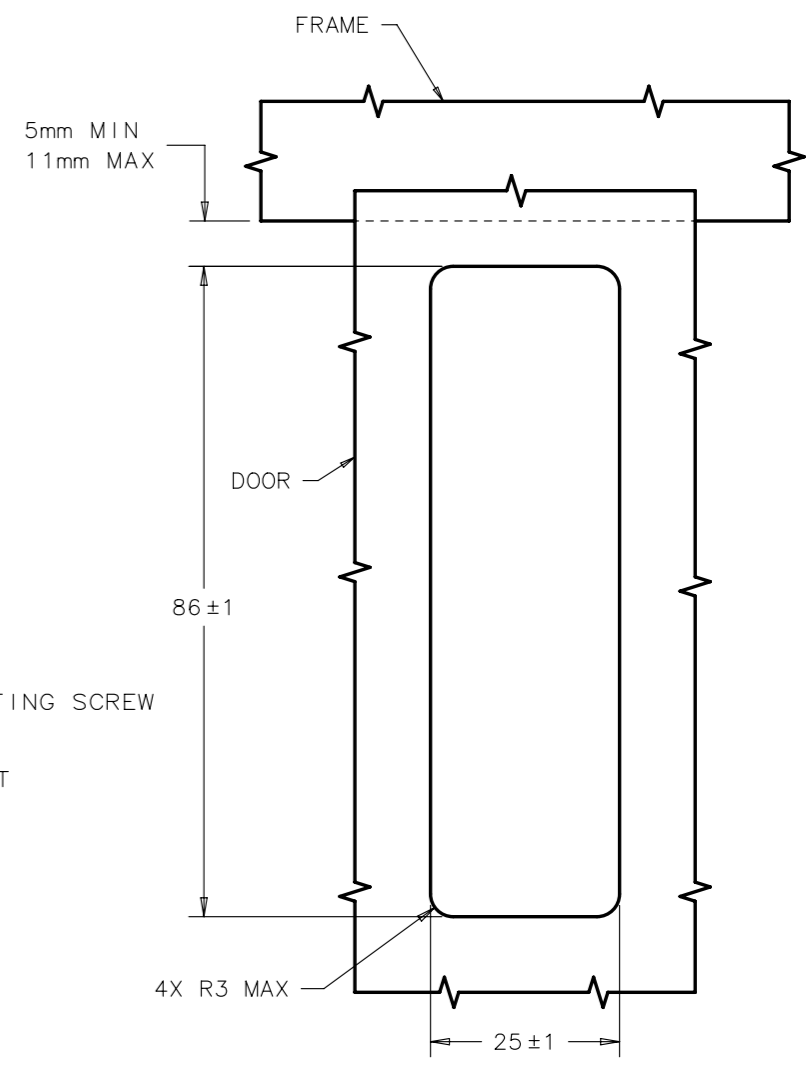
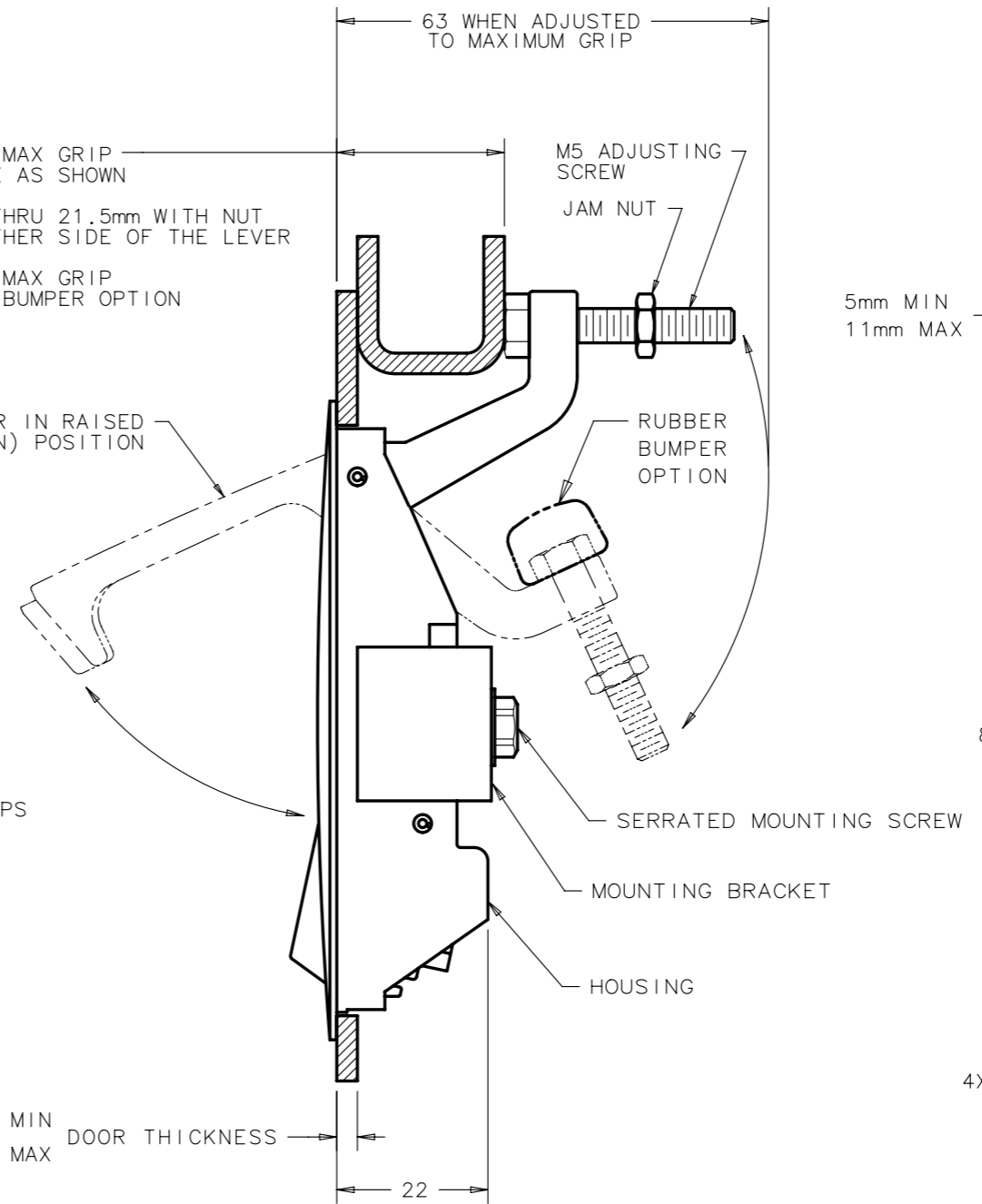
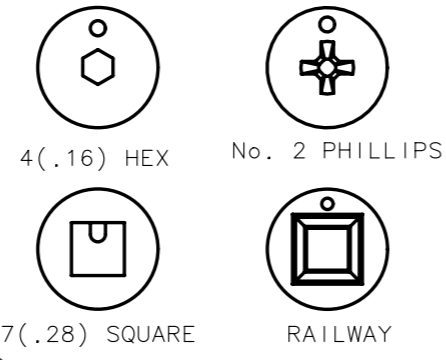
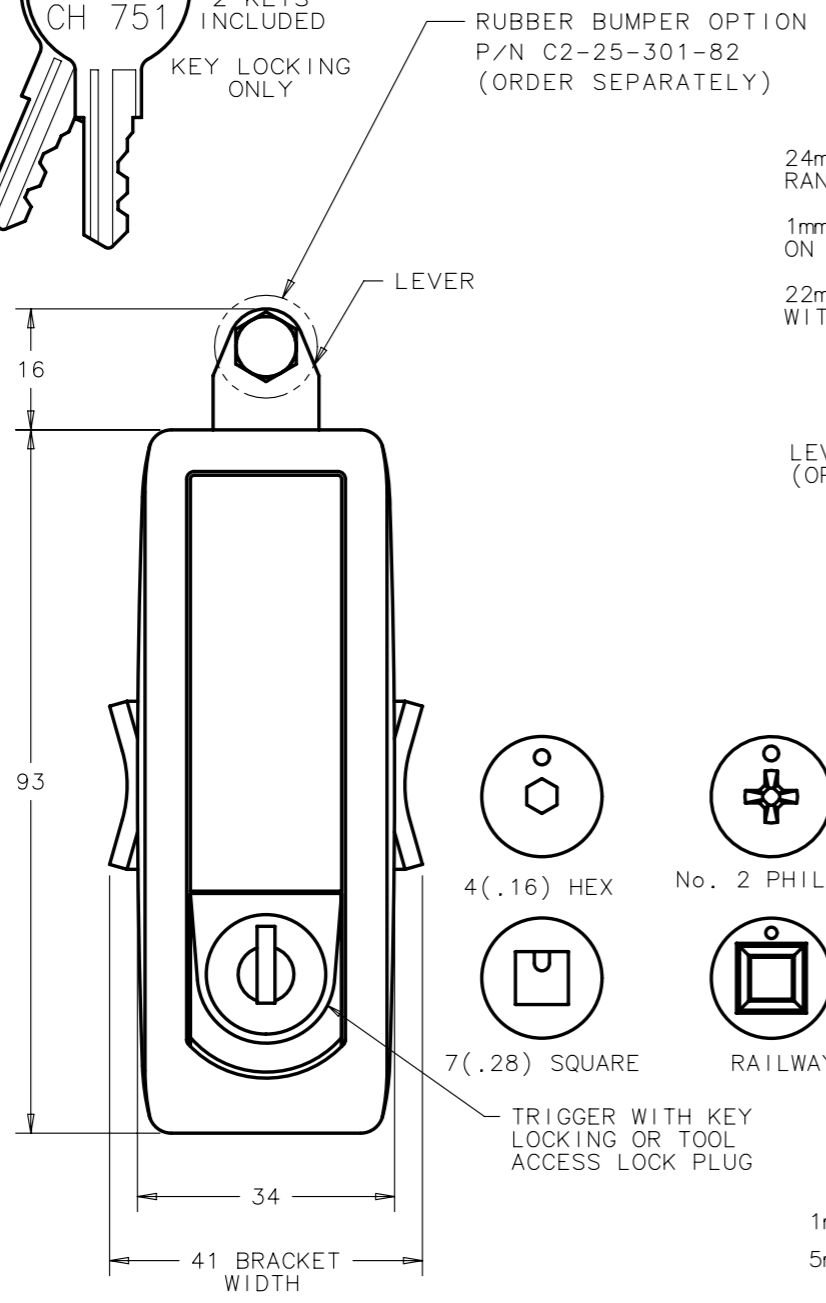
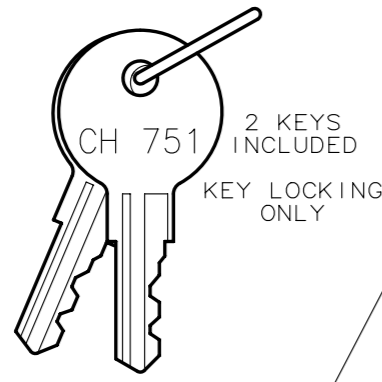
ALL DIMENSIONS WITHOUT TOLERANCES ARE FOR REFERENCE ONLY.

A3 PAPER SIZE

THIRD ANGLE PROJECTION

	ASSEMBLY PART NUMBER TABLE		
	BLACK POWDER COATED	TEXTURED CHROME FINISH	SILVER POLYESTER POWDER COATED
KEY LOCKING	C2-32-25	C2-32-21	C2-32-27
4mm HEX RECESS	C2-32-45	C2-32-41	C2-32-47
No. 2 PHILLIPS	C2-32-105	C2-32-101	C2-32-107
7mm SQUARE RECESS	C2-32-115	C2-32-111	C2-32-117
WITHOUT LOCK PLUG	C2-32-135	C2-32-131	C2-32-137
RAILWAY	C2-32-145	C2-32-141	C2-32-147

- NOTES:
- A. MATERIAL AND FINISH
- HOUSING, LEVER, LOCK PLUG AND TRIGGER: DIE CAST ZINC, SEE ASSEMBLY PART NUMBER TABLE.
  - U-SPRING: 302 STAINLESS STEEL, PASSIVATED.
  - TORSION SPRING: 302 STAINLESS STEEL, NATURAL.
  - SPIROL PIN: SAE 51420, NATURAL
  - SCREWS AND HEX NUT: LOW CARBON STEEL, ZINC ALLOY PLATE BRIGHT PLUS SEALER.
  - BRACKET: 1010 STEEL, ZINC ALLOY PLATE BRIGHT PLUS SEALER.
  - KEYS: BRASS, NICKEL PLATED.
- B. MOUNTING SCREW IS A M5 SCREW. USE LONGER SCREWS (NOT SUPPLIED) FOR THICKER DOORS.
- C. LOCKPLUG INSTALLATION:
- POSITION LOCKPLUG AND ORIENT RETAINING WAFER (LAST WAFER LOCATED AT THE BOTTOM OF LOCK) AT THE 3 O'CLOCK POSITION AND INSERT INTO THE TRIGGER.
  - BE SURE THE LOCKPLUG IS FULLY SEATED AGAINST THE TRIGGER, THEN REMOVE KEY.



PANEL PREPARATION