

southco PROPRIETARY ITEM - EXCEPT FOR USES EXPRESSLY GRANTED IN WRITING, INFORMATION DISCLOSED HEREON IS CONFIDENTIAL AND ALL RIGHTS PATENT AND OTHERWISE ARE RESERVED BY SOUTHCO, INC.

REV | **DATE** | **DRAWN/CHKD** | **DESCRIPTION**

H	01MAY2003	VNI/MJS	PRN: P2003-0339
I	19JUN2003	RLR/MJS	PRN: P2003-0504
J	13AUG2004	VNI/RLR	PRN: P2004-0893
K	09NOV2004	MDY/RLR	PRN: P2004-1308
L	06SEP2005	MDY/RLR	PRN: P2005-1167
M	23SEP2011	MJS/DM	PRN: P2011-0647
N	08MAR2012	MJS	PRN: P2012-0322
O	24JUL2013	MJS/TVA	PRN: P2013-1498

DATE 24FEB93
DRAWN JGK
CHKD
SCALE 1:1

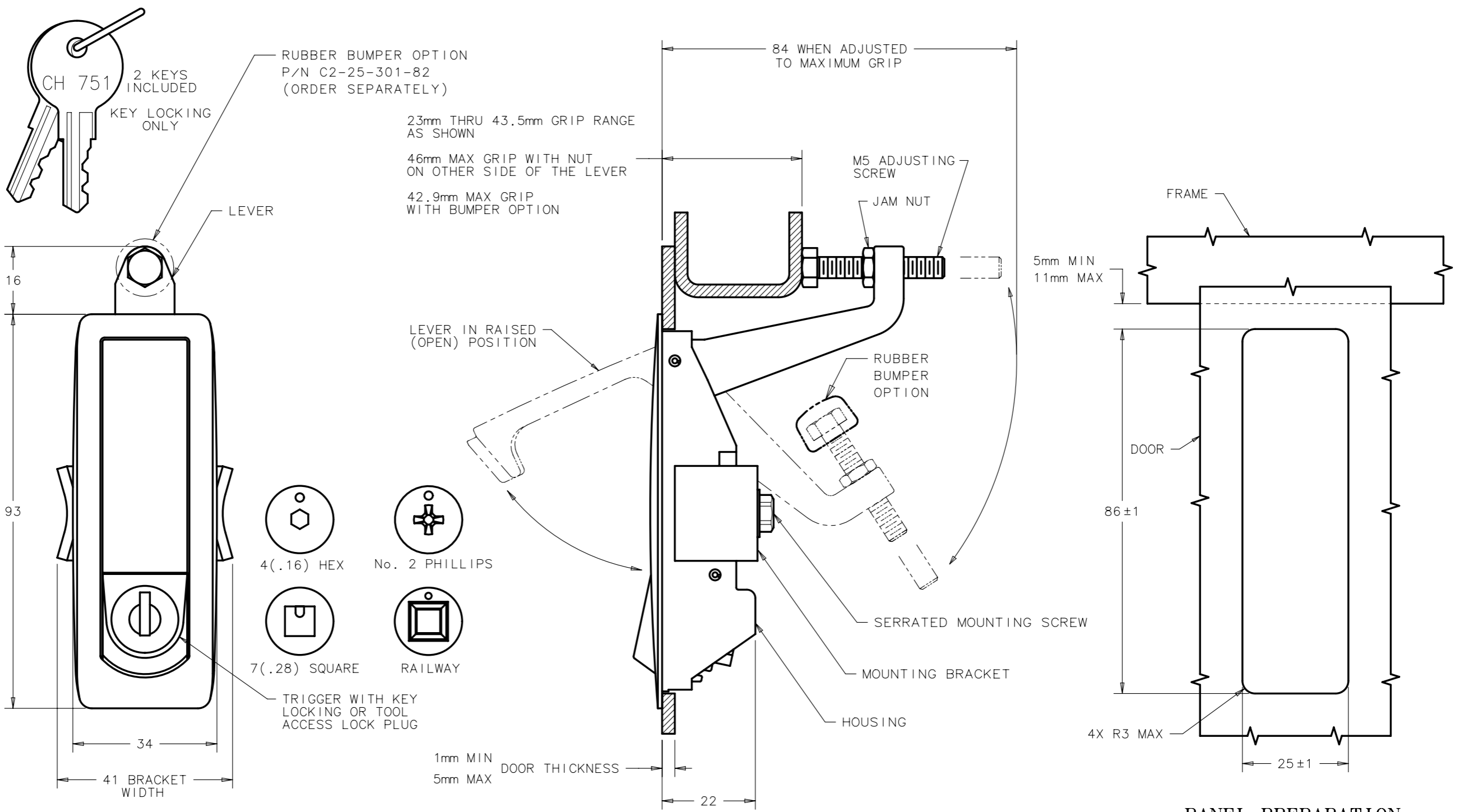
DRAWING NUMBER J-C2-33-2
MILLIMETERS

ALL DIMENSIONS WITHOUT TOLERANCES ARE FOR REFERENCE ONLY.

A3 PAPER SIZE
THIRD ANGLE PROJECTION

	ASSEMBLY PART NUMBER TABLE		
	BLACK POWDER COATED	TEXTURED CHROME FINISH	SILVER POLYESTER POWDER COATED
KEY LOCKING	C2-33-25	C2-33-21	C2-33-27
4mm HEX RECESS	C2-33-45	C2-33-41	C2-33-47
No. 2 PHILLIPS	C2-33-105	C2-33-101	C2-33-107
7mm SQUARE RECESS	C2-33-115	C2-33-111	C2-33-117
WITHOUT LOCK PLUG	C2-33-135	C2-33-131	C2-33-137
RAILWAY	C2-33-145	C2-33-141	C2-33-147

- NOTES:
- A. MATERIAL AND FINISH
- HOUSING, LEVER, LOCK PLUG AND TRIGGER: DIE CAST ZINC, SEE ASSEMBLY PART NUMBER TABLE.
 - U-SPRING: 302 STAINLESS STEEL, PASSIVATED.
 - TORSION SPRING: 302 STAINLESS STEEL, NATURAL.
 - SPIROL PIN: SAE 51420, NATURAL
 - SCREWS AND HEX NUT: LOW CARBON STEEL, ZINC ALLOY PLATE BRIGHT PLUS SEALER.
 - BRACKET: 1010 STEEL, ZINC ALLOY PLATE BRIGHT PLUS SEALER.
 - KEYS: BRASS, NICKEL PLATED.
- B. MOUNTING SCREW IS A M5 SCREW. USE LONGER SCREWS (NOT SUPPLIED) FOR THICKER DOORS.
- C. LOCKPLUG INSTALLATION:
- POSITION LOCKPLUG AND ORIENT RETAINING WAFER (LAST WAFER LOCATED AT THE BOTTOM OF LOCK) AT THE 3 O'CLOCK POSITION AND INSERT INTO THE TRIGGER.
 - BE SURE THE LOCKPLUG IS FULLY SEATED AGAINST THE TRIGGER, THEN REMOVE KEY.



PANEL PREPARATION