


| REV. | DATE      | DRAWN   | REVISION        |
|------|-----------|---------|-----------------|
| G    | 18DEC2001 | JPW/JSS | PRN: P2001-0337 |

| ITEM | COMPONENT  | PART No      | MATERIAL            | FINISH       |
|------|------------|--------------|---------------------|--------------|
|      | ASSEMBLY   | B7-20-301-10 |                     |              |
|      | SLIDE      |              | NYLON               | BLACK        |
|      | HOUSING    |              | 1010 STEEL          | SEE NOTE "B" |
|      | SPRING     |              | 302 STAINLESS STEEL | PASSIVATED   |
|      | STUD       |              | LOW CARBON STEEL    | SEE NOTE "C" |
|      | WASHER     |              | ACETAL              | BLACK        |
|      | LOCK ASS'Y |              | SEE NOTE "A"        | SEE NOTE "A" |

INCH DIMENSIONS  
DIMENSIONS WITHOUT TOLERANCES ARE FOR REFERENCE ONLY.



THIRD ANGLE PROJECTION

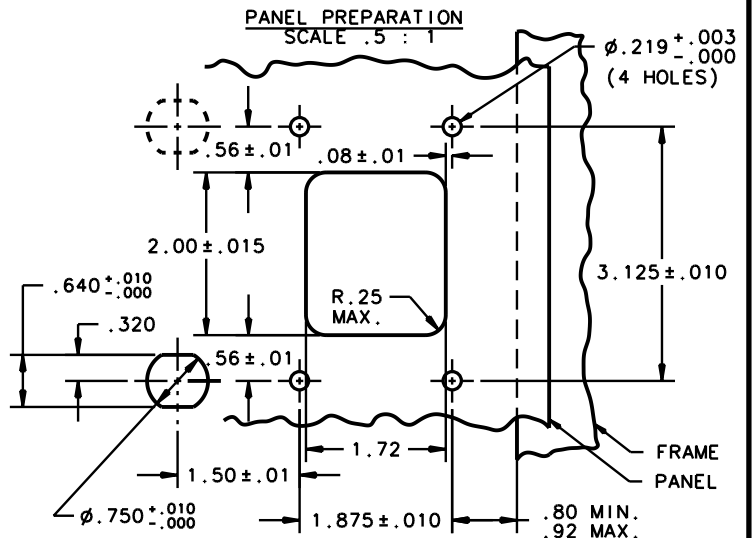
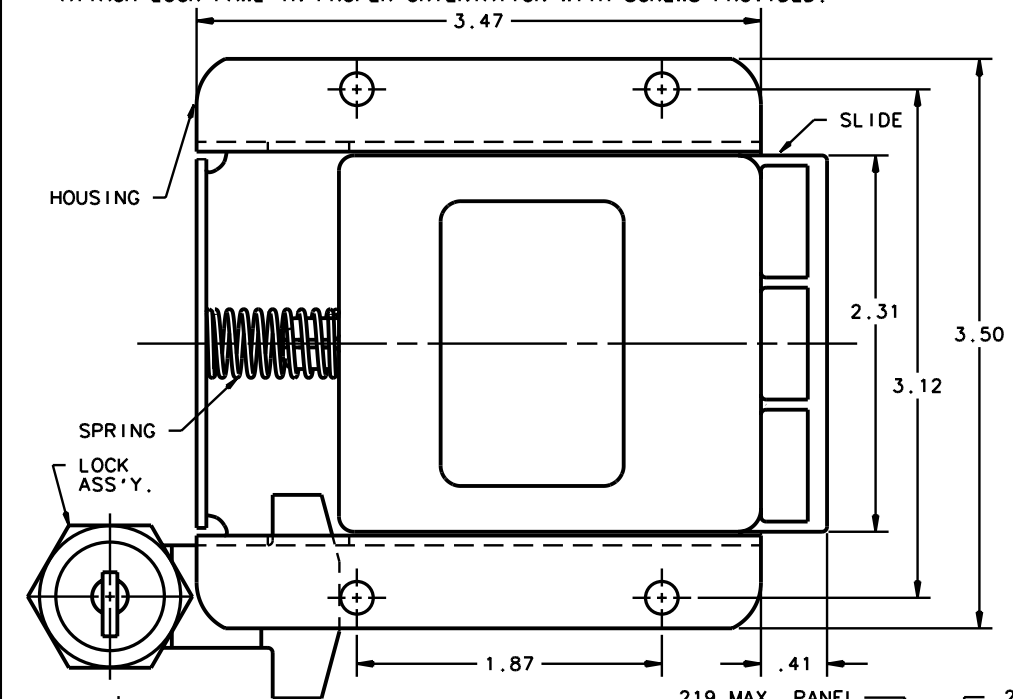
A4 PAPER SIZE

### INSTALLATION INSTRUCTIONS:

- PREPARE PANEL AS SHOWN. NOTE MAX FRAME AND PANEL THICKNESSES.
- ATTACH FASTENER TO PANEL USING FOUR  $\phi$ .18 RIVETS OR No. 10 SCREWS. ALTERNATIVE: WELD HOUSING IN PLACE.
- PLACE LOCK IN OPENING AND SECURE WITH HEX NUT. WITH KEY IN LOCK, ORIENT LOCK CYLINDER TO UNLOCKED POSITION. ATTACH LOCK PAWL IN PROPER ORIENTATION WITH SCREWS PROVIDED.

### NOTES:

- LOCK ASSEMBLY CONSISTS OF:  
CYLINDER - DIE CAST ZINC, BLACK POWDER COATING;  
LOCK PAWL - 1010 STEEL, ZINC PLATE, CHROMATE PLUS SEALER;  
KEYS - BRASS, NICKEL PLATED;  
HEX NUT - DIE CAST ZINC, CHEMICAL PROTECTIVE FILM.
- BLACK POWDER COATING.
- ZINC PLATE, CHROMATE PLUS SEALER.



**MOUNTING NOTE:**  
LOCK ASSEMBLY MAY BE MOUNTED ON EITHER SIDE OF THE FASTENER.

