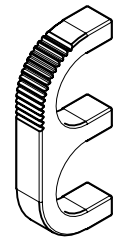
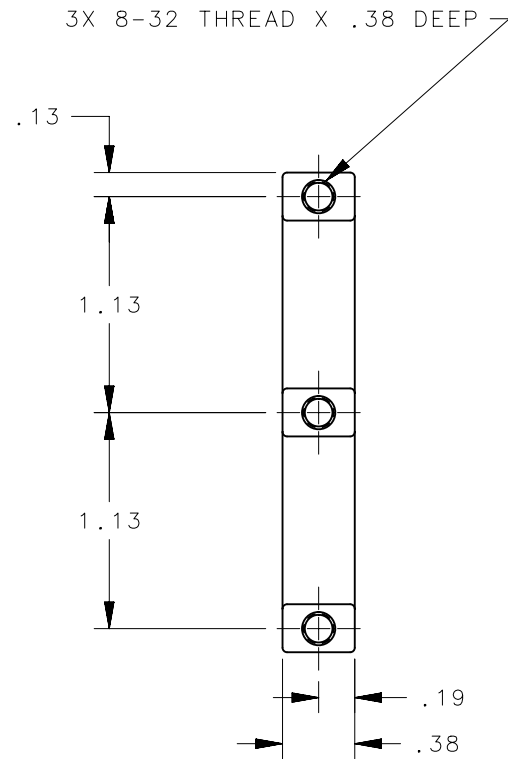
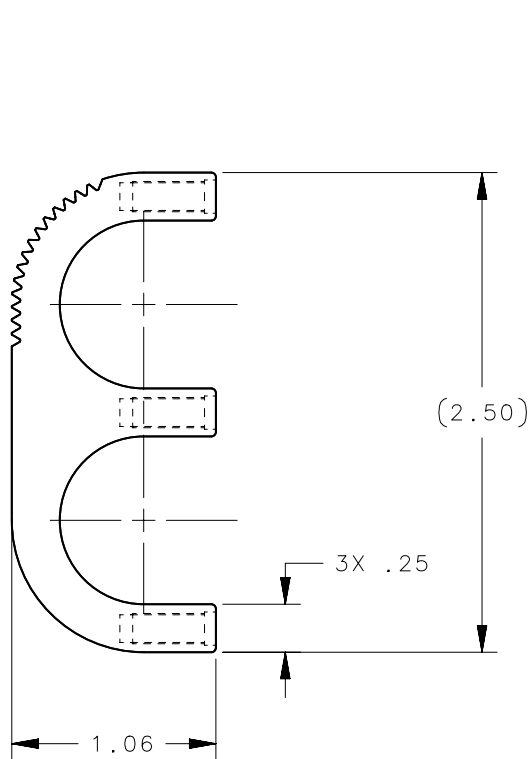


REVISION HISTORY			
REV	DATE	BY	DESCRIPTION
C	18AUG2016	RNG/YGC	PRN: P2016-1911



SCALE 1:2

NOTES:

- COSMETIC SPECIFICATION:**
ALL SURFACES UNLESS OTHERWISE NOTED ARE TO CONFORM TO A CLASS "B" DESIGNATION AS DESCRIBED IN SOUTHCO COSMETIC SPECIFICATION: S-121-03 FOR POWDER COATING S-121-06 FOR ANODIZED FINISH
- RoHS COMPLIANT.**
- INSTALLATION**
SCREW LENGTH= THICKNESS OF PANEL PLUS .38 ATTACH WITH 8-32 SCREWS NOT SUPPLIED. (USE Ø .196 HOLES IN PANEL)

B4-10-203-75	PULL	6063 ALUMINUM	SILVER POWDER COATED
B4-10-203-15	PULL	6063 ALUMINUM	BLACK ANODIZED
B4-10-203-12	PULL	6063 ALUMINUM	BLACK POWDER COATED
B4-10-203-11	PULL	6063 ALUMINUM	CLEAR ANODIZED
SOUTHCO PART NUMBER	TYPE OF COMPONENT	MATERIAL	FINISH

THIRD ANGLE PROJECTION		 CONNECT • CREATE • INNOVATE	
INCHES [MM]			
TOLERANCES UNLESS OTHERWISE NOTED		DESCRIPTION NO. B4 PULL (200 SERIES)	
ALL DIMENSIONS WITHOUT TOLERANCES ARE FOR REFERENCE ONLY.		SIZE A	SYSTEM NX
PER ASME Y14.5M-1994		DWG NO. J-B4-10-203	
DRAWN BY JGK		DATE 22JAN1999	SCALE 1:1
SHEET 1 OF 1			

PROPRIETARY ITEM
 EXCEPT FOR USES EXPRESSLY GRANTED IN WRITING, INFORMATION DISCLOSED HEREON IS CONFIDENTIAL AND ALL RIGHTS, PATENT AND OTHERWISE, ARE RESERVED BY SOUTHCO, INC.