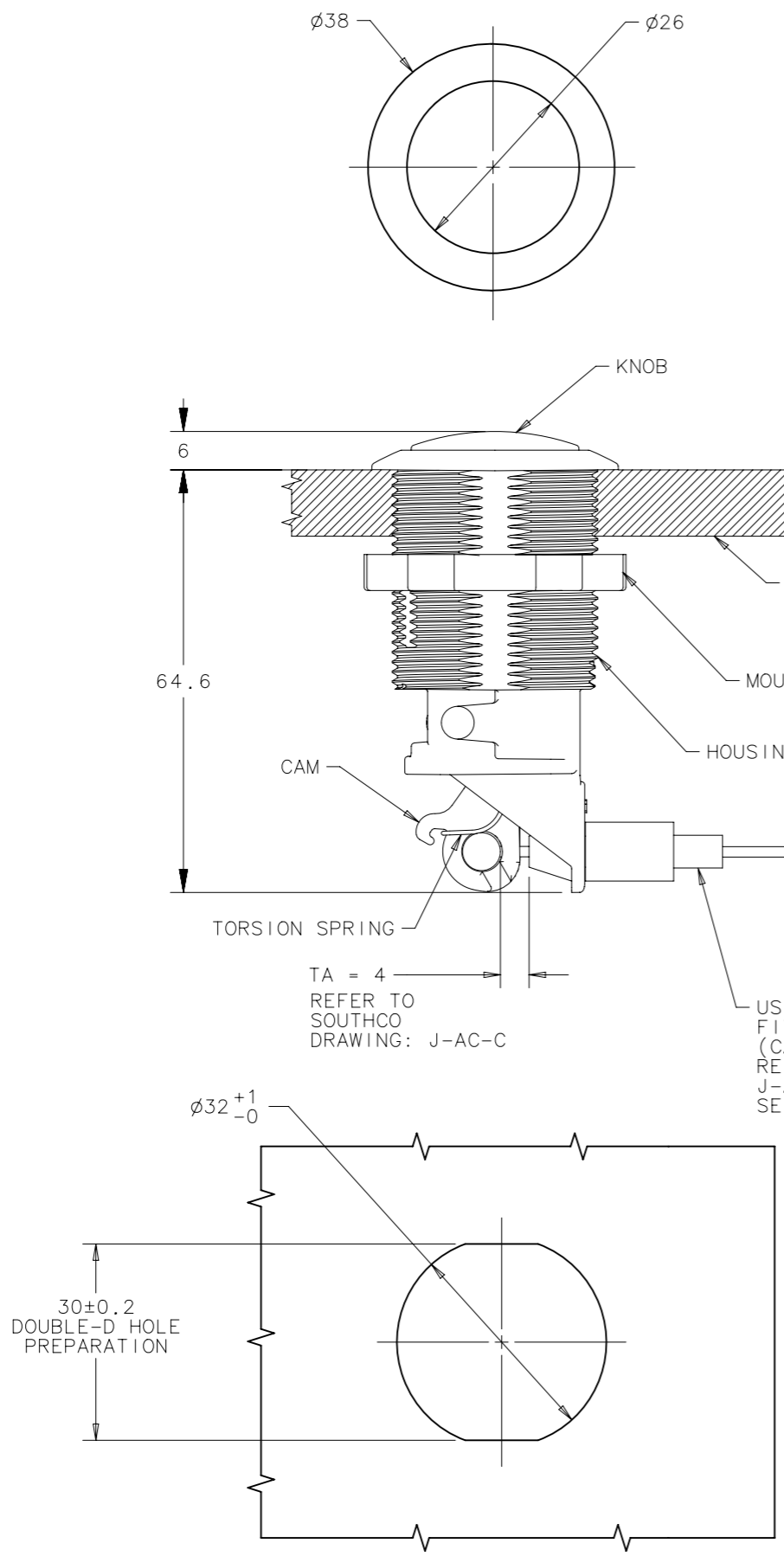
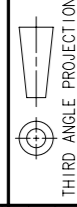
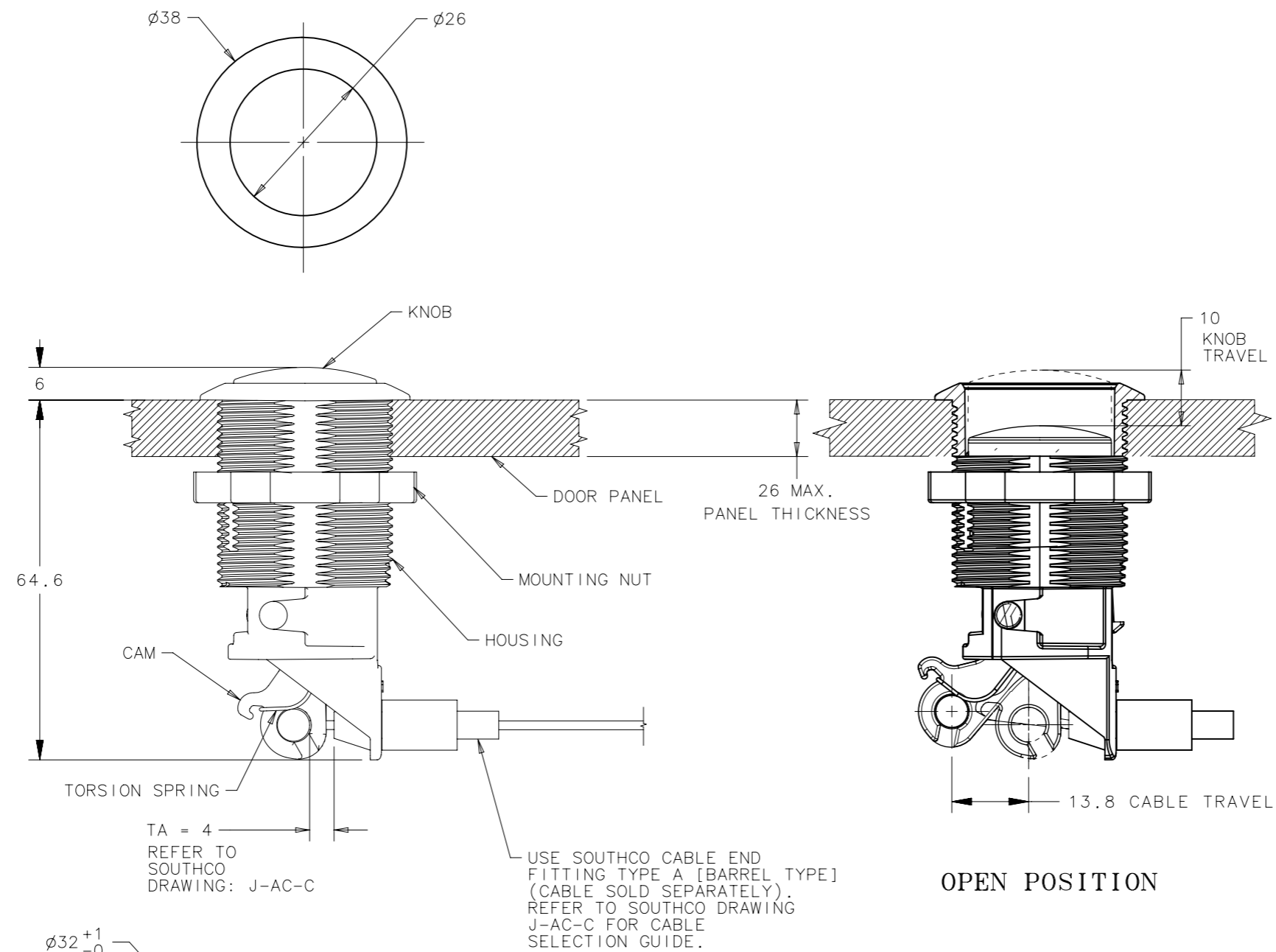


REV	DATE	DRAWN/CHKD	DESCRIPTION	ITEM	PART NUMBER	MATERIAL	FINISH	SCALE	DRAWN	CHKD	DATE
A	23JUL2008	CW/MJS	INITIAL DWG RELEASE	ASSEMBLY	AC-80-101-T1	-	-	1:1	CW	MJS	23JUL2008
B	27MAY2009	RMD/LBT	PRN: 2009-0639	HOUSING	-	PC+ABS	BLACK				
C	28MAY2009	RMD/LBT	PRN: 2009-0665	KNOB	-	PC+ABS	BLACK				
D	11NOV2010	MJS	PRN: P2010-1120	CAM	-	GLASS FILLED NYLON	BLACK				
E	18SEP2017	CMS/MDW	PRN: P2017-2314	COMPRESSION SPRING	-	302 STAINLESS STEEL	PASSIVATED				
F	07DEC2017	NBK/VK	PRN: P2017-2993	TORSION SPRING	-	302 STAINLESS STEEL	PASSIVATED				
				MOUNTING NUT	-	GLASS FILLED NYLON	BLACK				

MILLIMETERS
ALL DIMENSIONS WITHOUT TOLERANCES ARE FOR REFERENCE ONLY.



PANEL PREPARATION



- INSTALLATION NOTES:
1. PREPARE PANEL AS SHOWN
 2. INSERT ACTUATOR ASSEMBLY THROUGH HOLE AND TIGHTEN NUT (38 ACROSS FLATS). RECOMMENDED TORQUE: 4.2 N-m MAX.
 3. INSERT CABLE BARREL FITTING IN KNOB ACTUATOR HOLE, THEN SNAP CABLE SLEEVE TO HOUSING TO SECURE CABLE.
- MATERIAL NOTES:
1. ZINC PLATED, CHROMATE AND SEALER
- PACKAGING NOTES:
1. MOUNTING NUT SHIPPED UNASSEMBLED WITH ACTUATOR ASSEMBLY IN SAME PLASTIC BAG.

