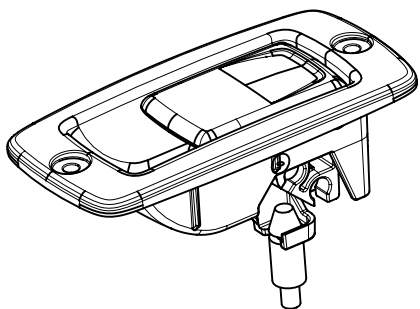
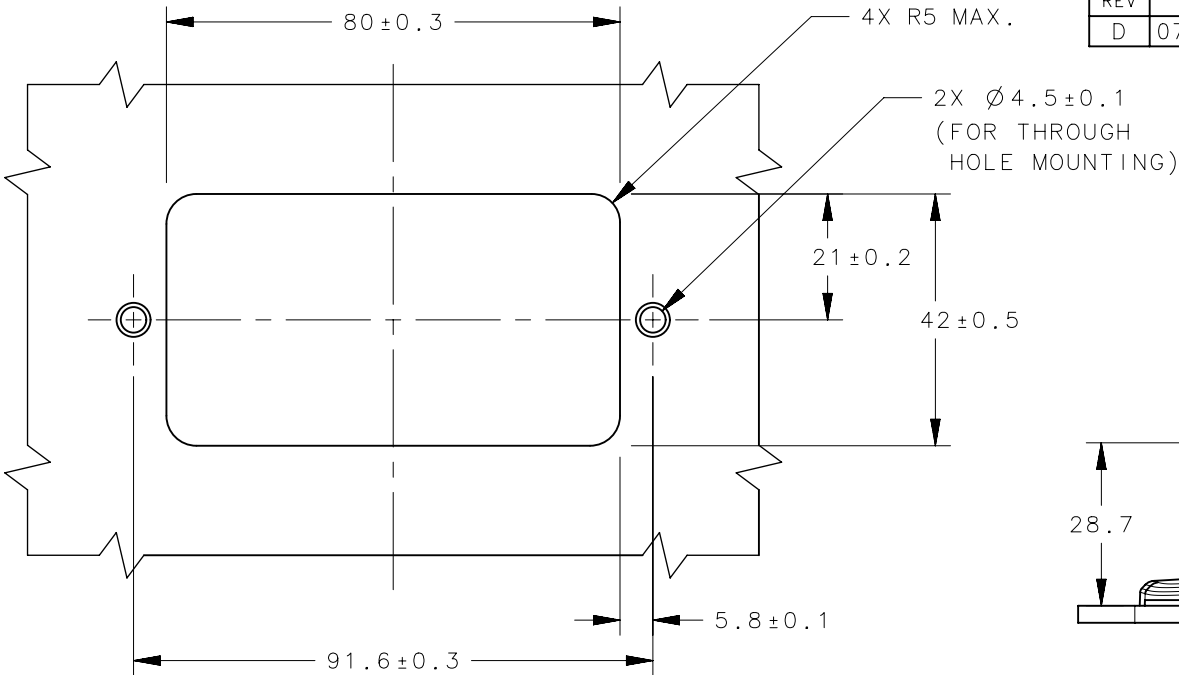
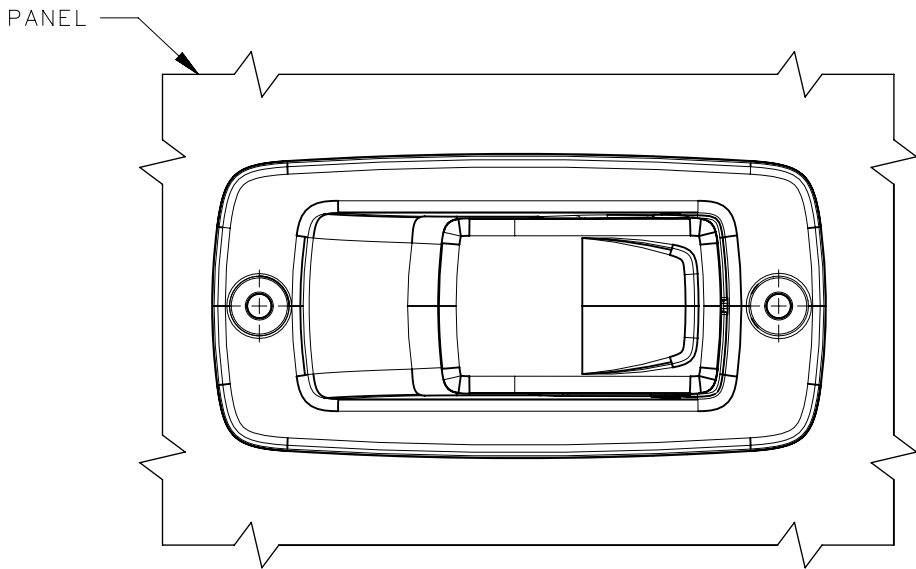
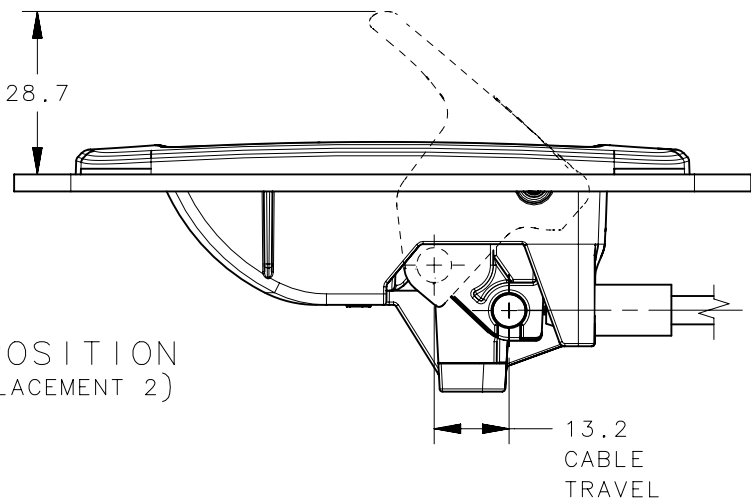
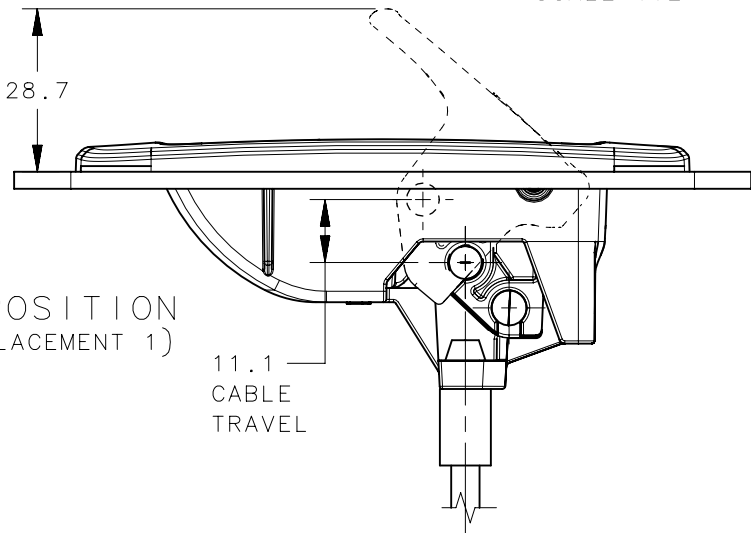


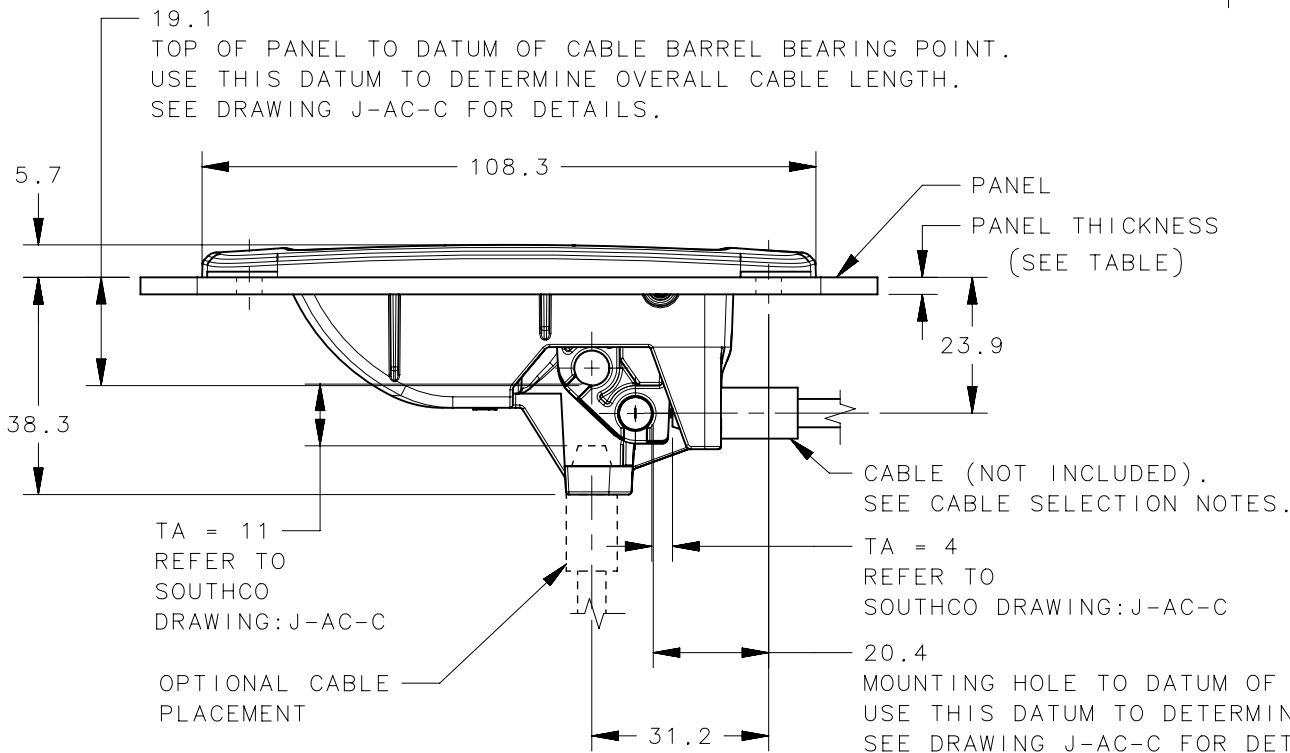
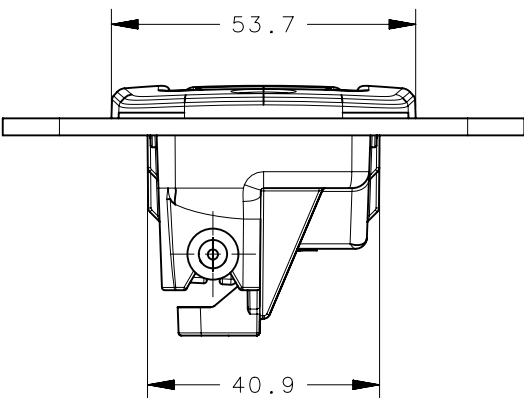
REVISION HISTORY			
REV	DATE	BY	DESCRIPTION
D	07JUL2017	NDS/YGC	PRN: P2017-1625



SCALE 1:2



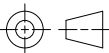
PANEL PREPARATION



CABLE ORIENTATION	PANEL THICKNESS
PLACEMENT #1	12.5 MAX.
PLACEMENT #2	16 MAX.

- NOTES:
- CABLE SELECTION NOTES:
USE SOUTHCO CABLE WITH CABLE FITTING "A" AND CABLE TYPE "3". SEE DRAWING J-AC-C FOR DETAILS.
 - PACKAGING NOTES:
CELL PACKED, 25 ASSEMBLIES PER LAYER, 3 LAYER MAX PER BOX. WHEN ORDERING, SPECIFY QUANTITY IN MULTIPLES OF 25.
 - INSTALLATION NOTES:
A. PLACE ACTUATOR INTO PANEL OPENING, ORIENTING PADDLE END TOWARDS THE CABLE ROUTING END.
B. USE M4 OR #8 SCREWS TO MOUNT ACTUATOR TO PANEL.
C. INSERT CABLE BARREL FITTING IN PADDLE ACTUATOR HOLE, THEN SNAP CONDUIT FITTING TO HOUSING TO SECURE CABLE.

5	-	1	BUMPER	EPDM	BLACK
4	-	1	PADDLE HANDLE	33% GLASS FILLED NYLON	BLACK
3	-	1	SPRING	302 STAINLESS STEEL	NATURAL
2	-	1	PIN	STEEL	ZINC PLATE WITH TRIVALENT CHROMATE
1	-	1	HOUSING	33% GLASS FILLED NYLON	BLACK
-	AC-70-101-11	-	ASSEMBLY	-	-
NO.	PART NUMBER	QTY	TYPE OF COMPONENT	MATERIAL	FINISH

	THIRD ANGLE PROJECTION		southco® CONNECT • CREATE • INNOVATE			
	MILLIMETERS [IN]					
	TOLERANCES UNLESS OTHERWISE NOTED		DESCRIPTION PADDLE ACTUATOR ASSEMBLY			
	ALL DIMENSIONS WITHOUT TOLERANCES ARE FOR REFERENCE ONLY.					
PROPRIETARY ITEM			SIZE A3	SYSTEM NX	DWG NO. J-AC-70-101	
EXCEPT FOR USES EXPRESSLY GRANTED IN WRITING, INFORMATION DISCLOSED HEREON IS CONFIDENTIAL AND ALL RIGHTS, PATENT AND OTHERWISE, ARE RESERVED BY SOUTHCO, INC.	PER ASME Y14.5M-1994		DRAWN BY CW/MJS	DATE 14AUG2008	SCALE 3:4	SHEET 1 OF 1