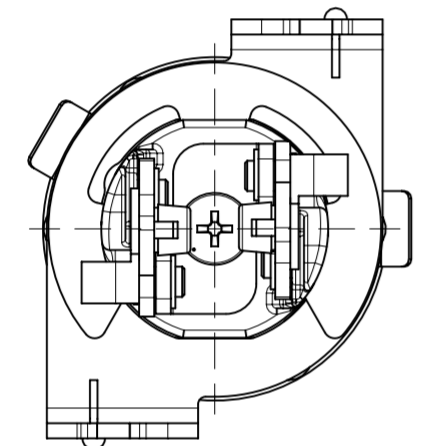
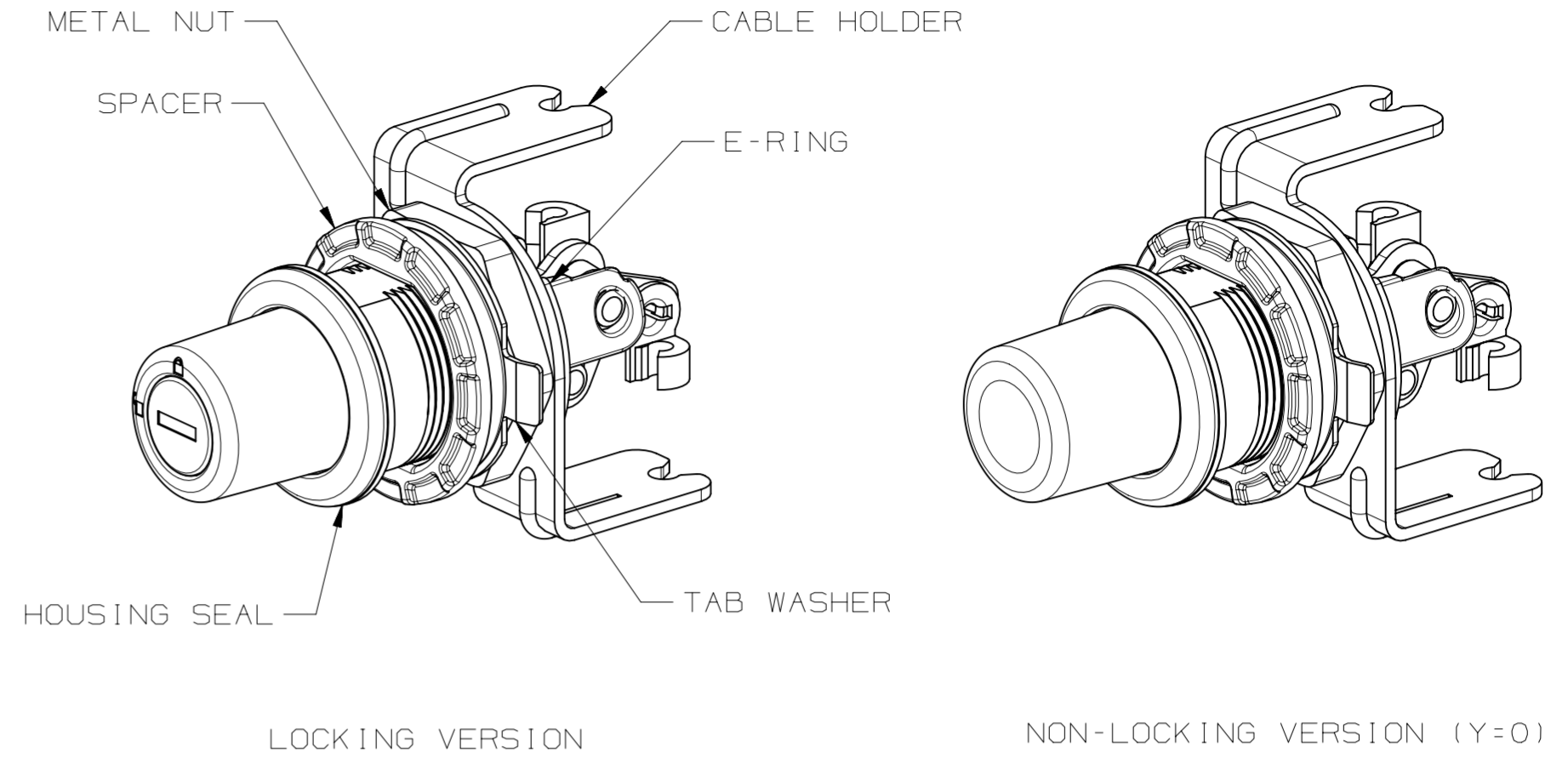
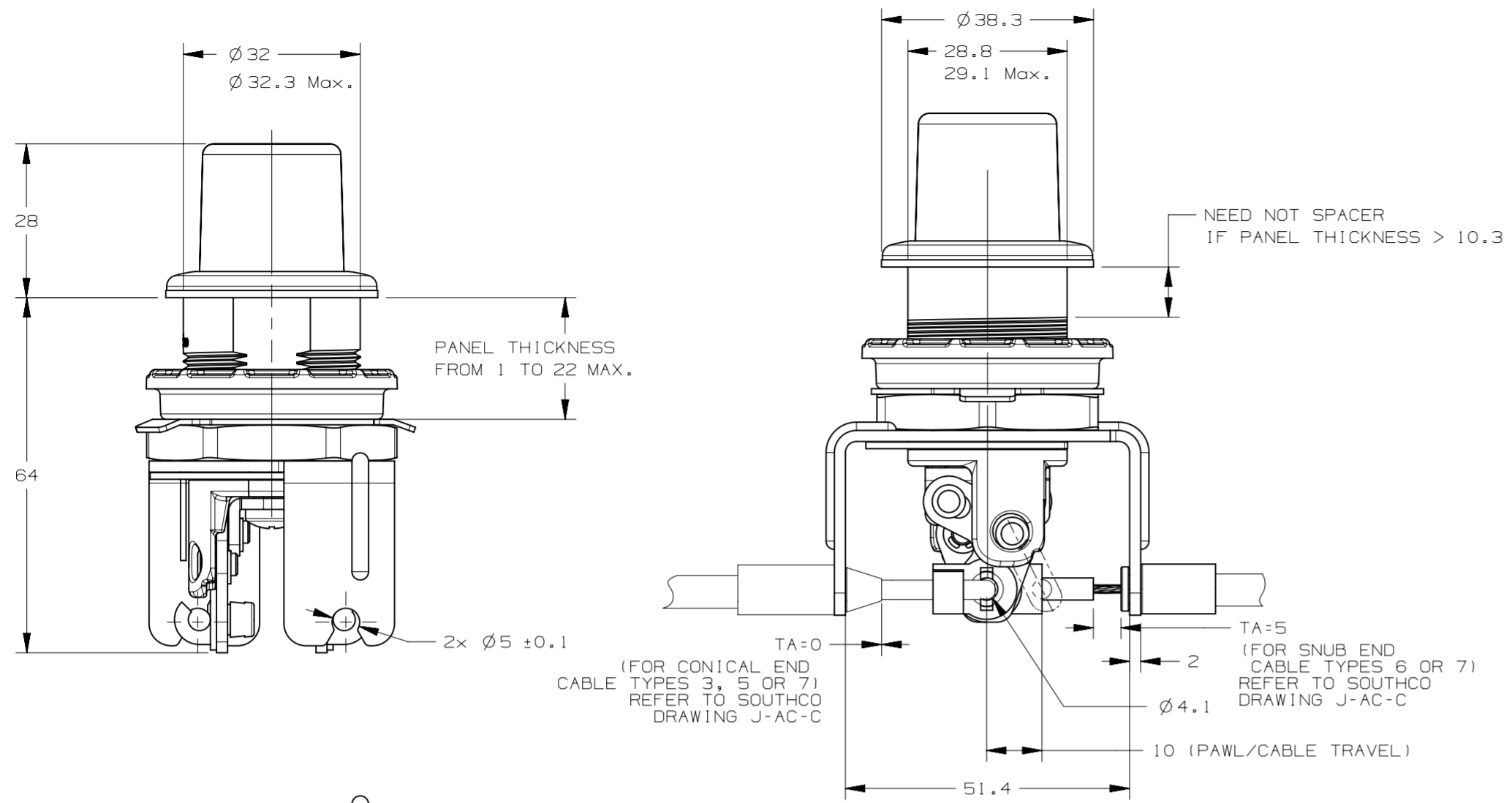
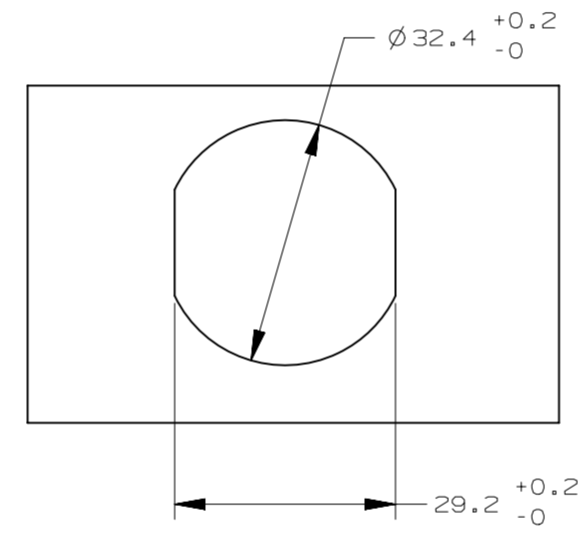


REVISION HISTORY			
REV	DATE	BY	DESCRIPTION
G	29JUN2017	DMS/YGC	PRN: P2017-1560



AC-30-1YZ



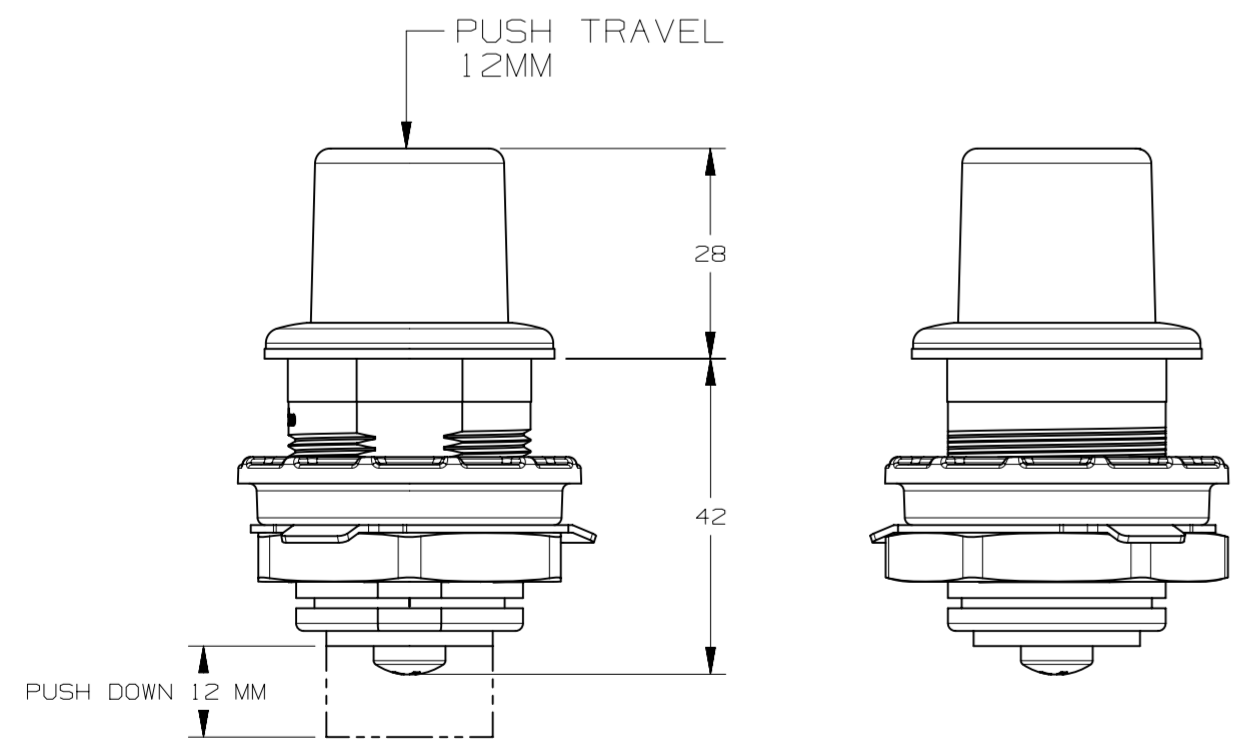
PANEL PREPARATION THICKNESS: 1MM TO 22MM Max.

PART NUMBER
AC-30-XYZ-UV-WWWW

END STYLE
LOCKING OPTION
MOUNTING METHOD
HOUSING MATERIAL
BUTTON FINISH
KEY CODES

- END STYLE - X:**
1-WITH PAWL ATTACHMENT
3-WITHOUT PAWL ATTACHMENT
- LOCKING OPTION - Y:**
0-NONLOCKING
1-REVERSIBLE KEY (NO KEYS - R001)
2-REVERSIBLE KEY (2 KEYS INCLUDED - R001)
3-REVERSIBLE KEY (MULTIPLE KEY CODES - 2 KEYS INCLUDED)
4-STANDARD KEY (NO KEYS - CH751)
5-STANDARD KEY (2 KEYS INCLUDED - CH751)
6-STANDARD KEY (MULTIPLE KEY CODES - 2 KEYS INCLUDED)
- MOUNTING METHOD - Z:**
1-WITH SPACER MOUNTING - MUST HAVE IF GLASS MOUNTING PANEL
2-WITHOUT SPACER MOUNTING
- HOUSING MATERIAL - U:**
1-ZINC WITH BLACK POWER COAT
3-STAINLESS STEEL WITH BLACK POWER COAT
- BUTTON MATERIAL & FINISH - V:**
1-NYLON WITH BLACK MOLDING
- KEY CODES (ONLY USE WHEN Y=3 OR 6) - WWWW:**
KD10-KEYED DIFFERENTLY (10 CODES)
MK10-MASTER KEYED, KEYED DIFFERENTLY (10 CODES)

- NOTE:**
- HOUSING SEAL, SPACER, METAL NUT, CABLE HOLDER WITH E-RING PACKAGE SEPARATELY
 - MATERIAL AND FINISH:**
 - BUTTON: REINFORCED NYLON, SEE V;
 - HOUSING: ZINC DIE CAST OR STAINLESS STEEL, SEE U FOR HOUSING MATERIAL AND FINISH
 - LOCK PLUG: ZINC DIE CAST WITH BRIGHT STAINLESS COVER
 - MOUNTING NUT, ROTATION SHAFT: ZINC DIE CAST OR STAINLESS STEEL,
 - PAWL, PAWL WASHER, RIVET: STAINLESS STEEL, PASSIVATED
 - E-RING, SCREW, SPRING: STAINLESS STEEL, PASSIVATED
 - INSTALLATION:**
 - INSERT ACTUATOR HOUSING WITH SEAL INTO HOLE OF DOOR, CHECK FOR PROPER ORIENTATION AND OPERATION
 - INSTALL SPACER, TAB WASHER, METAL NUT ONTO HOUSING, RECOMMENDED TIGHTENING TORQUE (M32X1.5):
FOR STAINLESS STEEL NUT AND HOUSING: 100Nm Max.
FOR ZINC ALLOY NUT AND HOUSING: 50Nm Max. (TBD)
 - CLIP ONE SIDE OF TAB WASHER TO HOLD METAL NUT, MUST TOUCH WITH THE SIDE WALL OF NUT, MAXIMUM CLEARANCE 1MM.
 - FOR CABLE/ROD CONNECTION: INSTALL THE CABLE HOLDER AND CLIP WITH E-RING, MOUNTING CABLE ON PAWL WITH HOLDER
 - ASSEMBLY CAN BE CONFIGURED WITH 1 OR 2 CABLES. RECOMMENDED SOUTHCO CABLE TYPE 3. USE FITTING TYPE B OR K (L FITTING) FOR ACTUATOR END. TA = 0 CABLES SOLD SEPARATELY. REFER TO SOUTHCO DRAWING J-AC-C FOR CABLE SELECTION GUIDE.



AC-30-3YZ

(SAME AS AC-30-1YZ EXCEPT OF NO CABLE HOLDER, C WASHER, PAWL, HOUSING DIFFERENT)

AC-30-XYZ-UV-WWWW PART NUMBER		SEE NOTES MATERIAL	SEE NOTES FINISH
THIRD ANGLE PROJECTION			
MILLIMETERS [IN]			
TOLERANCES UNLESS OTHERWISE NOTED		DESCRIPTION PUSH BUTTON ENTRY ACTUATOR	
ALL DIMENSIONS WITHOUT TOLERANCES ARE FOR REFERENCE ONLY.		SIZE A2	SYSTEM NX
DWG NO. J-AC-30		SCALE 1:1	SHEET 1 OF 1
PER ASME Y14.5M-1994		DRAWN BY MZ	DATE 10FEB2010