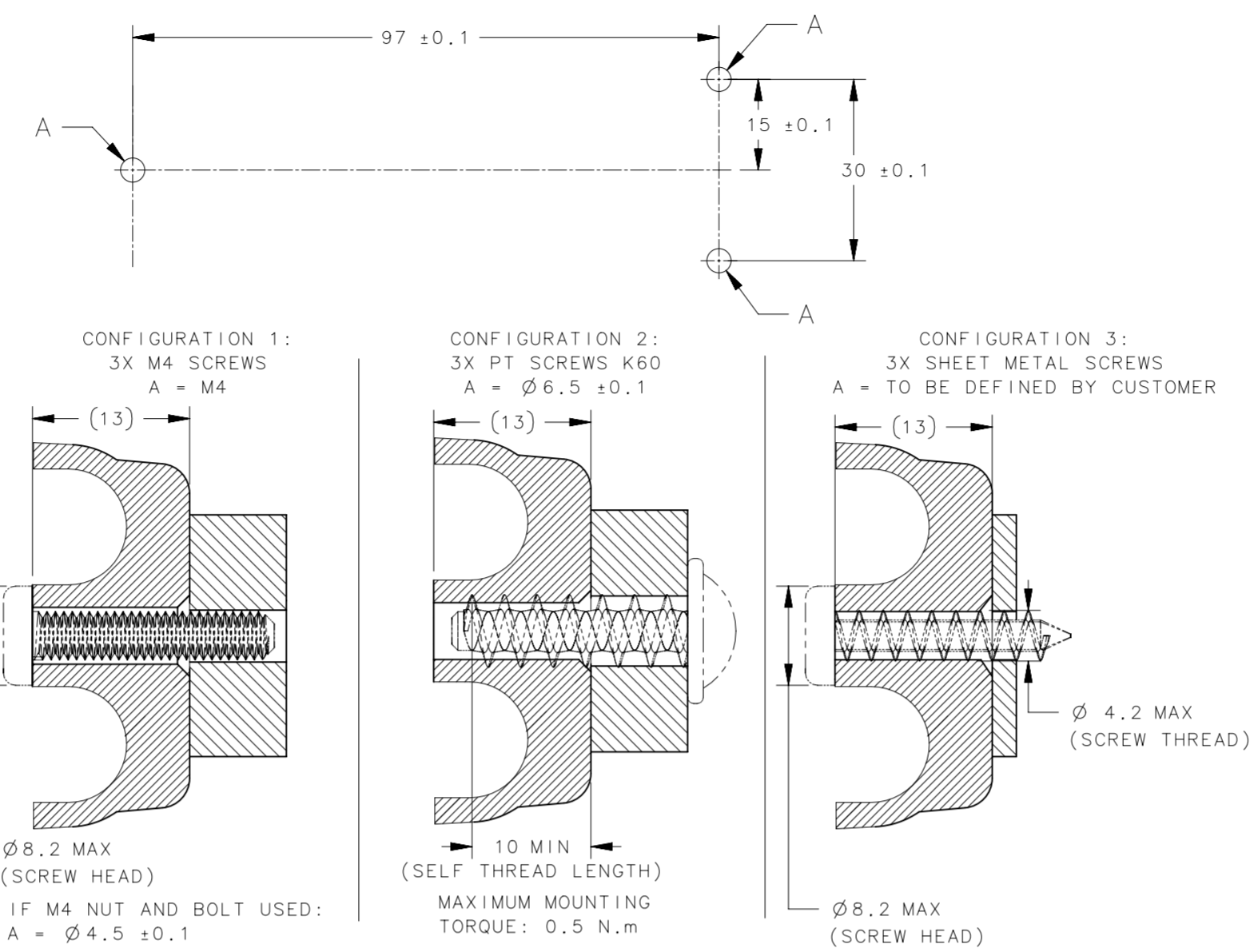
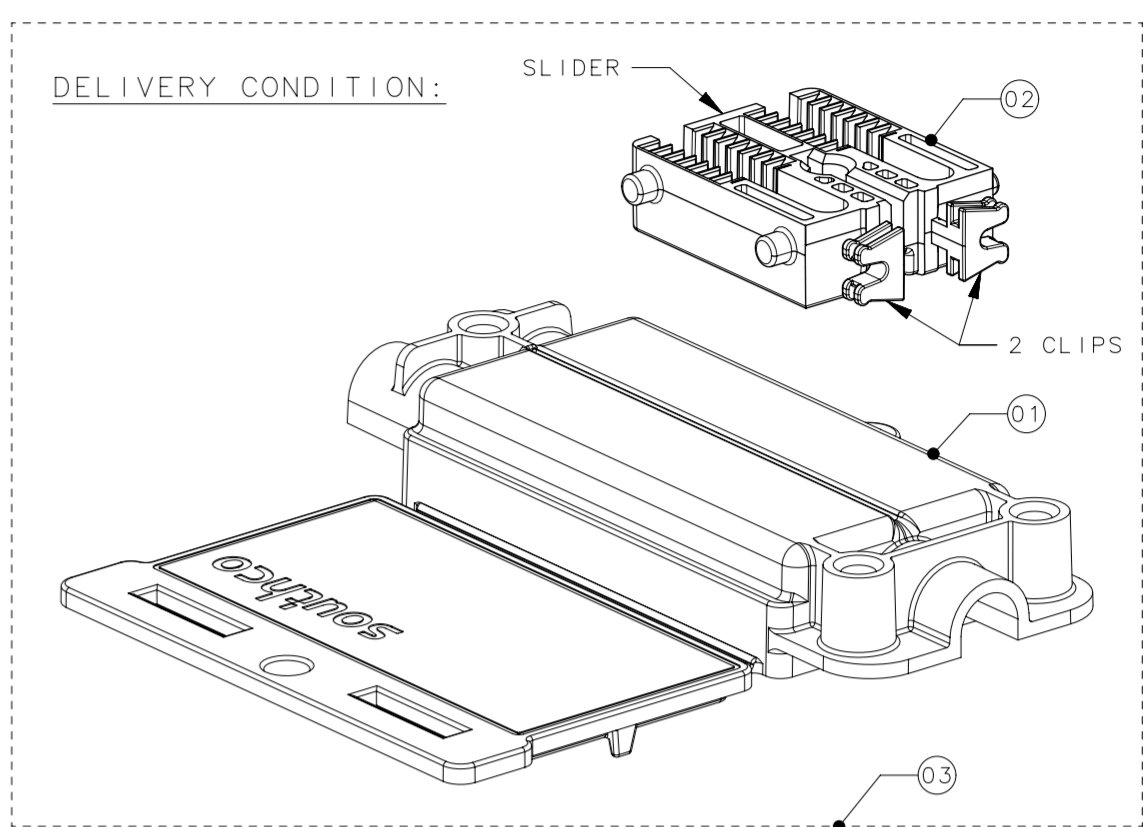


4. PANEL PREPARATION AND POSSIBLE SCREW TYPES:

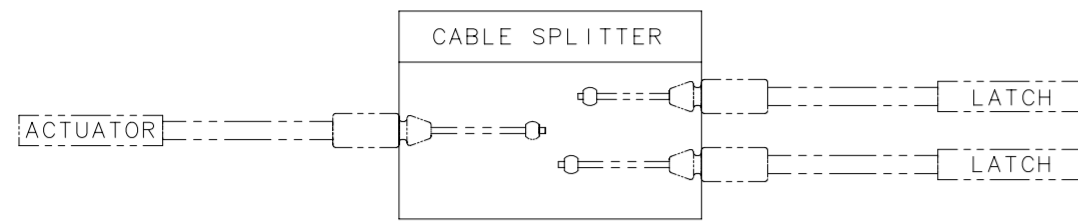


3X SECTIONS A-A - SCALE: 2:1

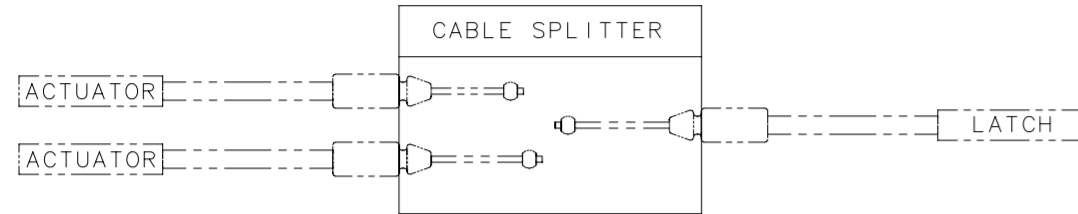
REVISION HISTORY			
REV	DATE	BY	DESCRIPTION
E	10FEB2017	DMS/ERC	PRN: P2017-0345



NOTES:  
1. SPLITTER CAN BE USED EITHER FOR:  
- 1 ACTUATOR OPERATING 2 LATCHES.

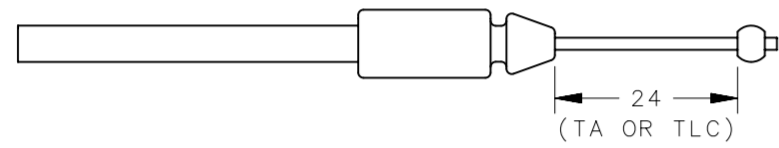


- 2 ACTUATORS OPERATING 1 LATCH.

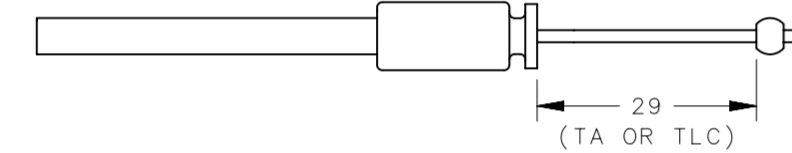


2. BOTH SIDES OF SPLITTER TO FIT CABLES DEFINED AS PER DRAWING J-AC-C WITH FOLLOWING ENDS:

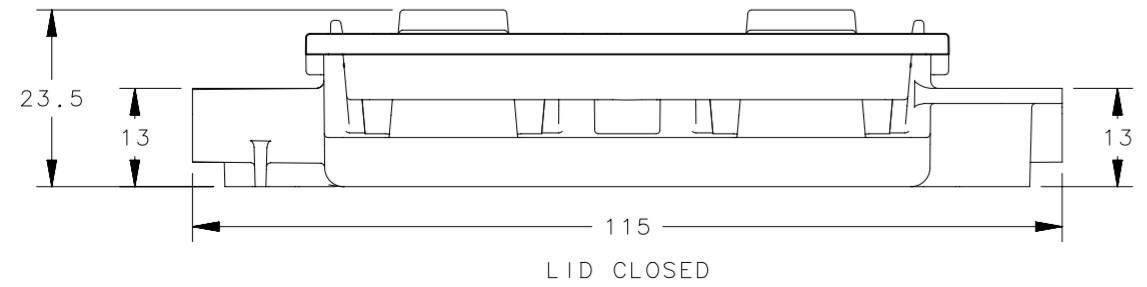
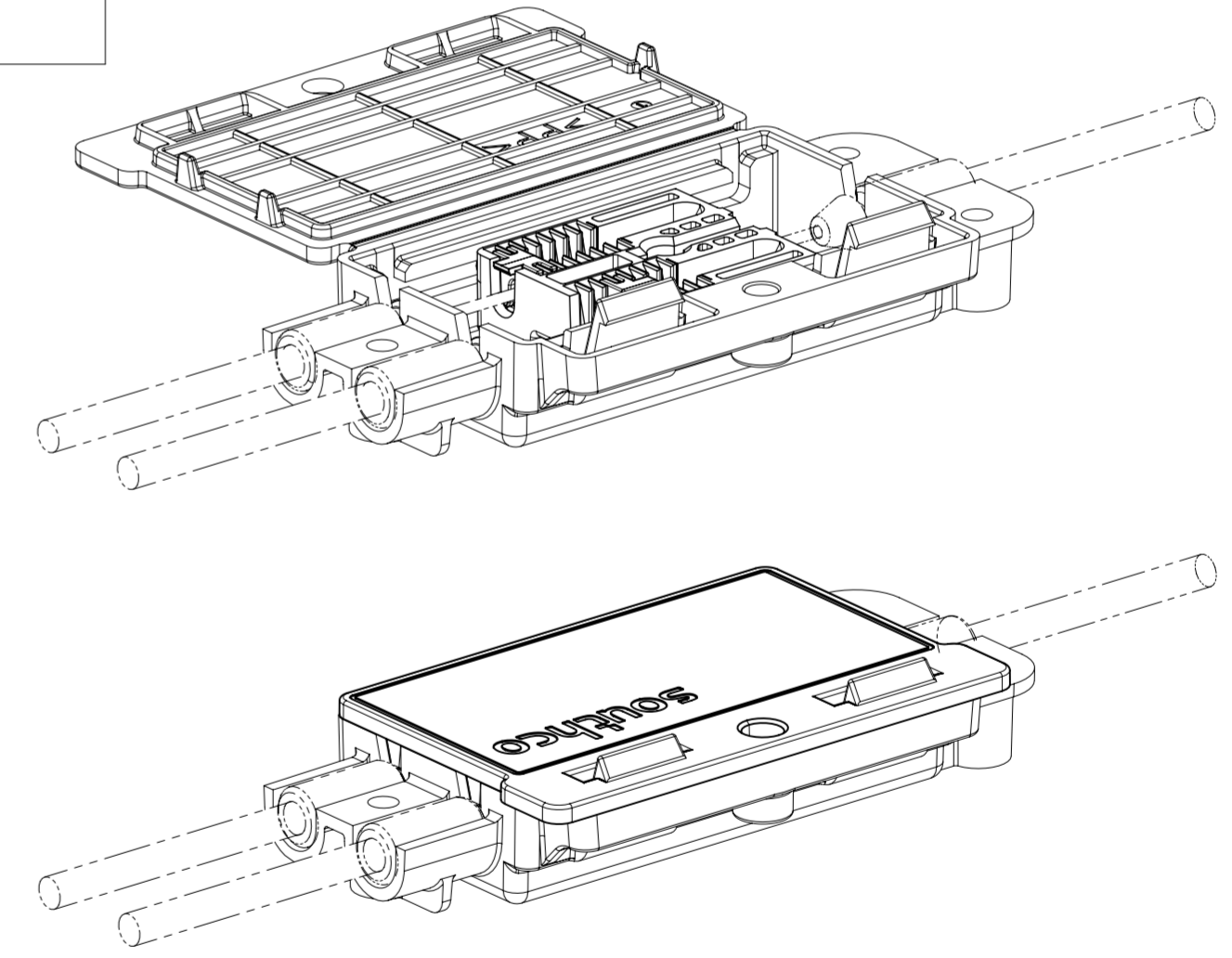
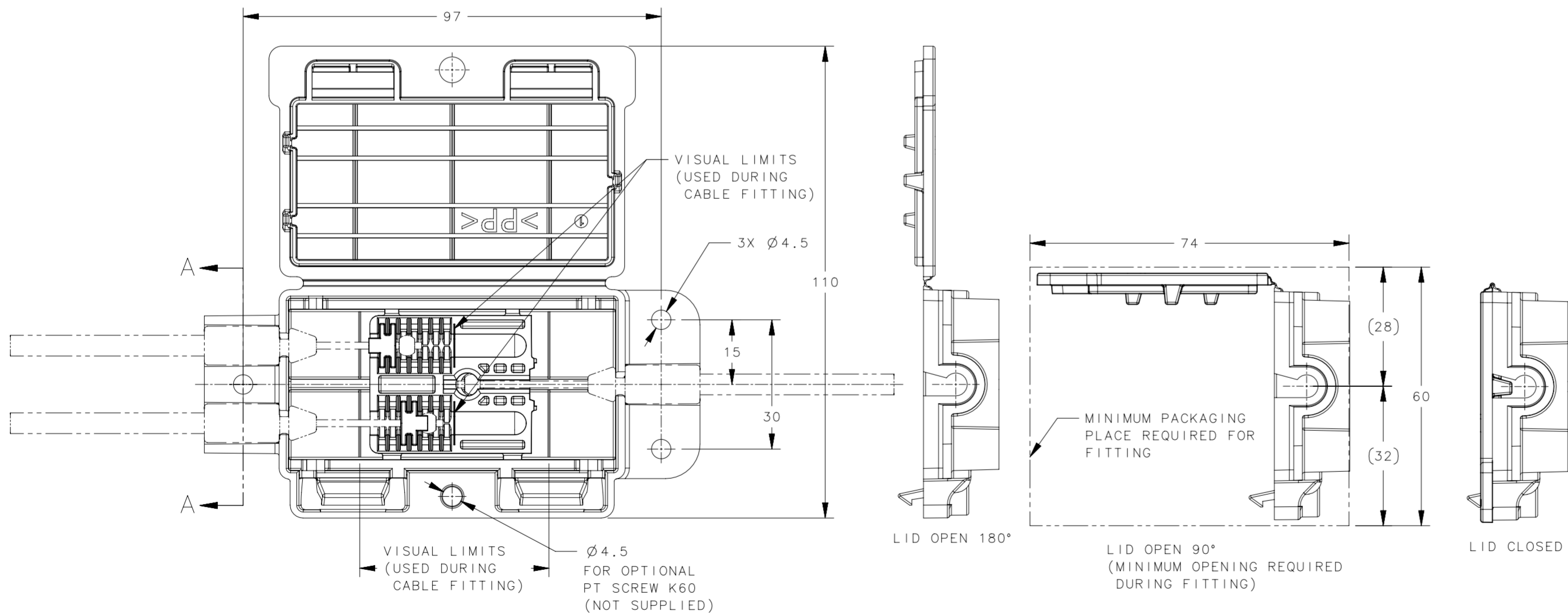
- A. - JACKETED BOWDEN CABLE END (TYPE 3; 5 OR 7).
- FITTING TYPE "H" (BALL FITTING Ø4.78).
- TA = TLC = 24 mm



- B. - JACKETED BOWDEN CABLE END (TYPE 6).
- FITTING TYPE "H" (BALL FITTING Ø4.78).
- TA = TLC = 29 mm



3. SPLITTER MINIMUM STROKE ON ACTUATOR SIDE: 10 mm.  
SPLITTER MINIMUM STROKE ON LATCH SIDE: 7 mm.



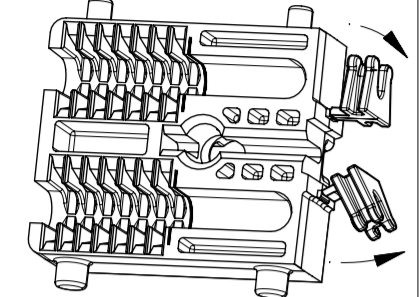
NO.	PART NUMBER	QTY	TYPE OF COMPONENT
03	-	1	SEALED PLASTIC BAG
02	-	1	SPLITTER SLIDER AND CLIPS
01	-	1	SPLITTER HOUSING
-	AC-05-301-11	1	CABLE SPLITTER ASSEMBLY

THIRD ANGLE PROJECTION			
MILLIMETERS [IN]			
SURFACE AREA		DESCRIPTION	
VOLUME		CABLE SPLITTER ASSEMBLY	
PROPRIETARY ITEM EXCEPT FOR USES EXPRESSLY GRANTED IN WRITING. INFORMATION DISCLOSED HEREON IS CONFIDENTIAL AND ALL RIGHTS, PATENT AND OTHERWISE, ARE RESERVED BY SOUTHCO, INC.		SIZE SYSTEM	DWG NO.
PER ASME Y14.5M-1994		A2 NX	J-AC-05-301-11
DRAWN BY	DATE	SCALE	SHEET
ERC	11JAN2016	1:1	1 OF 2

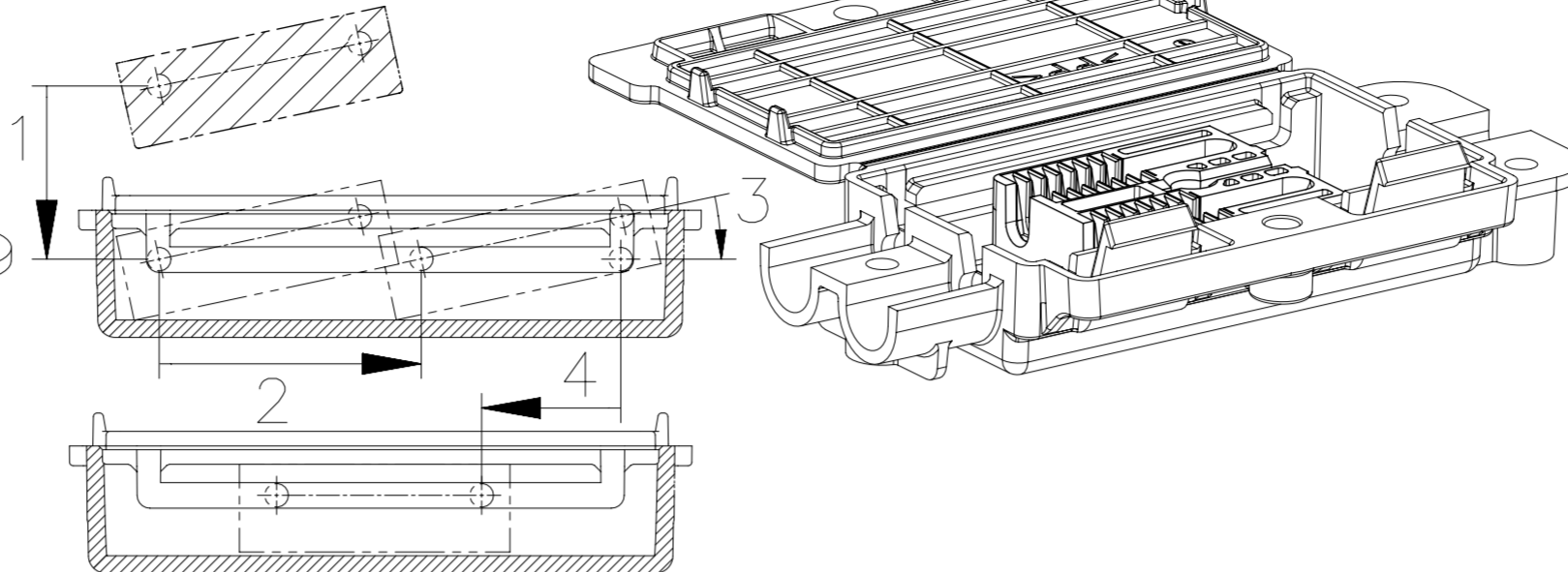
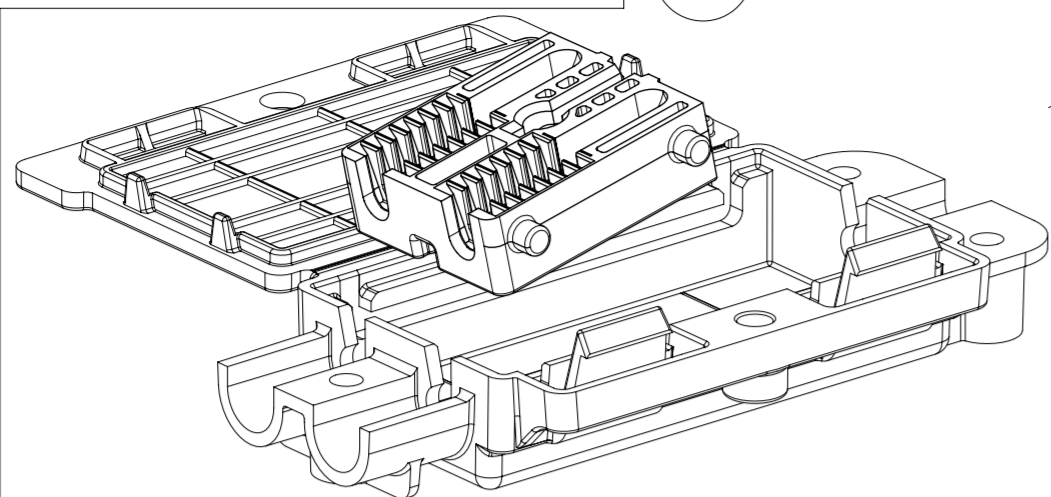
# FITTING INSTRUCTIONS

② FIT THE SLIDER INSIDE THE HOUSING.

① SNAP-OUT THE TWO CLIPS FROM SLIDER



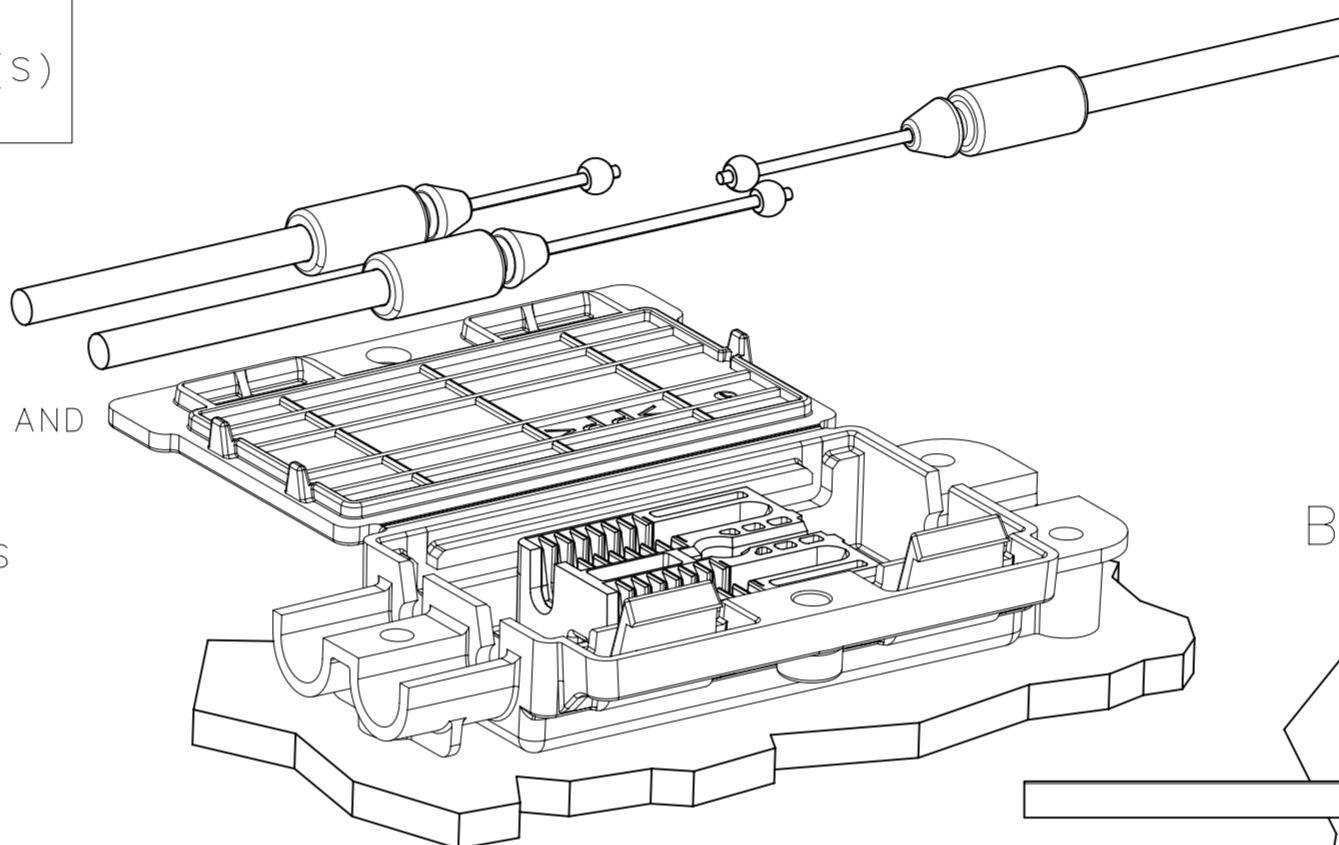
RETAIN THE TWO CLIPS FOR LATER.



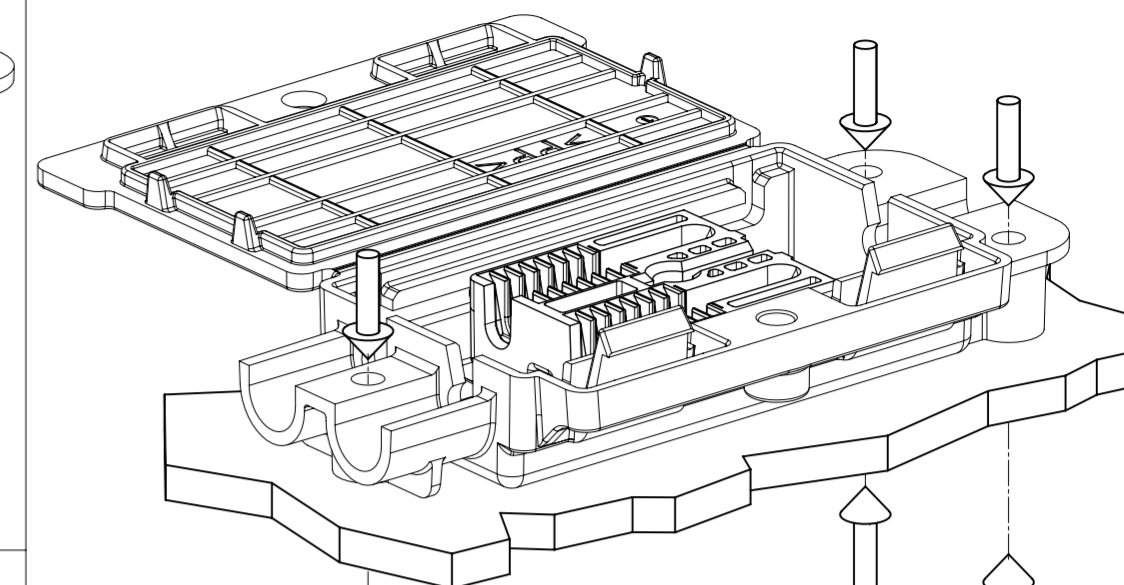
④ ROUTE CABLES IN THE ENVIRONMENT, THEN FIT CABLES, ACTUATOR(S) LATCH(ES) AND IF REQUIRED CABLE-MOUNTING-BRACKET(S) IN THEIR INTENDED FINAL POSITION.

⑤ CLIP CABLE-JACKETED-FITTINGS ON SPLITTER-HOUSING, INSURING:

- A. SINGLE-SIDED CABLE-END (SPHERE) SITS INSIDE CYLINDER ON SLIDER.
- B. TWIN-SIDED CABLE-END (SPHERES) FIT LOOSELY INSIDE RESPECTIVE "SLOTS" ON SLIDER.
- C. CHECK THAT THERE IS NO CONSTRAINTS ON CABLES, ACTUATOR(S) AND LATCHES IN REST POSITION.
- D. CHECK THAT SLIDER IS POSITIONED BETWEEN THE TWO MARKERS ON THE HOUSING, SLIDER POSITION PASSING ONE OF THE MARKERS INDICATES THAT THE "ONE SIDE CABLE" DOES NOT HAVE THE CORRECT LENGTH.\*(SEE NOTE)



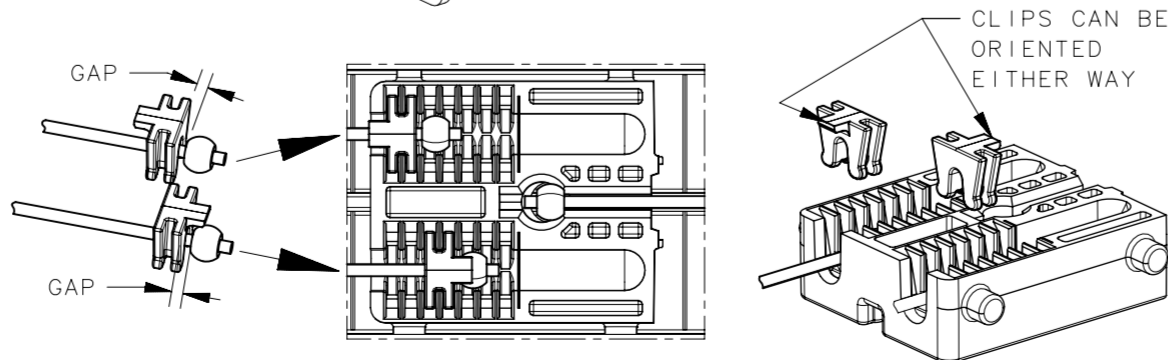
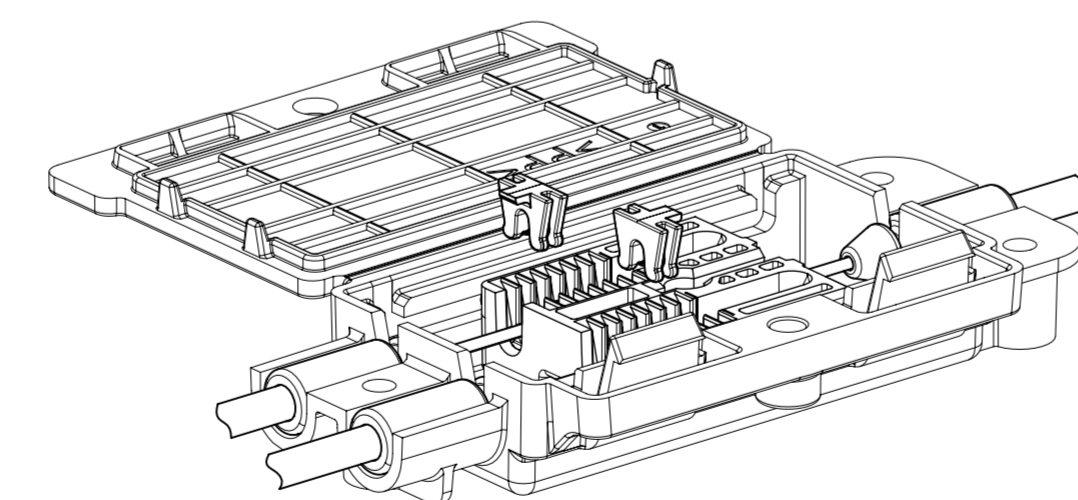
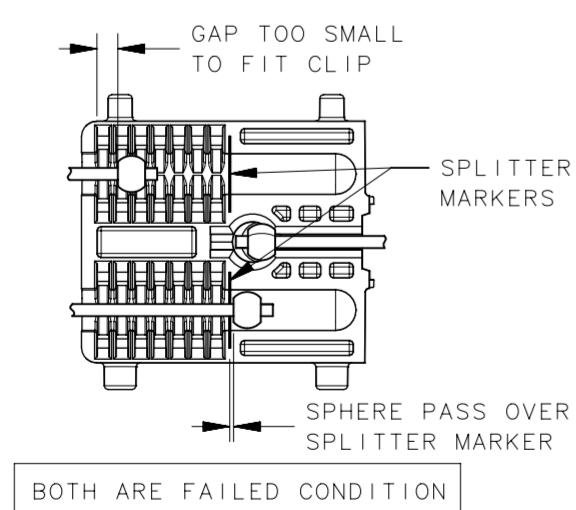
③ FIX THE HOUSING IN THE ENVIRONMENT IN IT'S INTENDED FINAL POSITION.



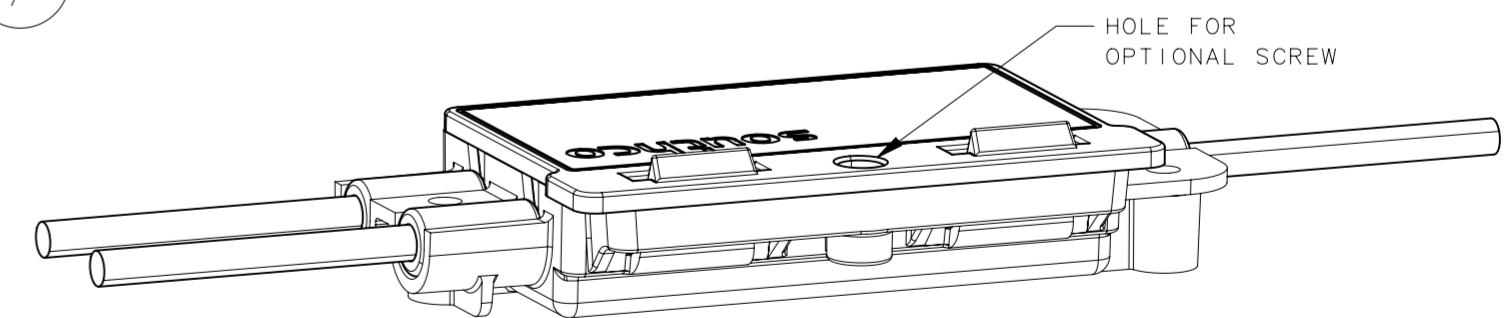
SEE NOTE ON PAGE 1: "4. PANEL PREPARATION AND POSSIBLE SCREW TYPES."

⑥ CLIP THE TWO CLIPS, ONE ON EACH "RACK" OF THE SLIDER, INSURING:

- A. CHECK AGAIN THAT THERE IS NO CONSTRAINTS ON CABLES, ACTUATOR(S) AND LATCHES IN REST POSITION.
- B. CHECK THAT THE CABLE-END (SPHERE) IS NOT OVER THE MARKER ON THE SPLITTER. IF EITHER THE CABLE-END (SPHERE) IS OVER HE MARKER, OR THE CABLE IS TOO SHORT THAT WE CAN NOT FIT A CLIP, IT INDICATES THAT THE CABLE DOES NOT HAVE THE CORRECT LENGTH.\*(SEE NOTE).
- C. EACH CLIP IS STEPPING OVER THE WIRE-CABLE, POSITIONED NEAREST TO THE CABLE-END (SPHERE) WITHOUT TOUCHING IT.



⑦ WHEN ALL IS CORRECT CLICK THE COVER CLOSED.



OPTIONAL SCREW TYPE PT K60 (NOT SUPPLIED) CAN BE USED FOR SECONDARY SECURING.

NOTE: \* PASSING OVER ONE MARKER, OR NOT HAVING ENOUGH CABLE LENGTH TO FIT A CLIP SHOWS THAT THE CABLE DOES NOT HAVE THE CORRECT LENGTH. WHERE A CABLE-MOUNTING-BRACKET IS USED ON LATCH OR ACTUATOR, THE ADJUSTMENT OF THIS BRACKET MAY BRING BACK THE COMPONENT WITHIN LIMITS.

THIRD ANGLE PROJECTION				<b>southco</b> CONNECT · CREATE · INNOVATE	
MILLIMETERS [IN]					
SURFACE AREA		TOLERANCES UNLESS OTHERWISE NOTED		DESCRIPTION	
VOLUME		ALL DIMENSIONS WITHOUT TOLERANCES ARE FOR REFERENCE ONLY.		CABLE SPLITTER ASSEMBLY	
PROPRIETARY ITEM EXCEPT FOR USES EXPRESSLY GRANTED IN WRITING. INFORMATION DISCLOSED HEREON IS CONFIDENTIAL AND ALL RIGHTS, PATENT AND OTHERWISE, ARE RESERVED BY SOUTHCO, INC.		SIZE	SYSTEM	DWG NO.	
PER ASME Y14.5M-1994		A2	NX	J-AC-05-301-11	
		DRAWN BY	DATE	SCALE	SHEET
		ERC	11JAN2016	1:1	2 OF 2