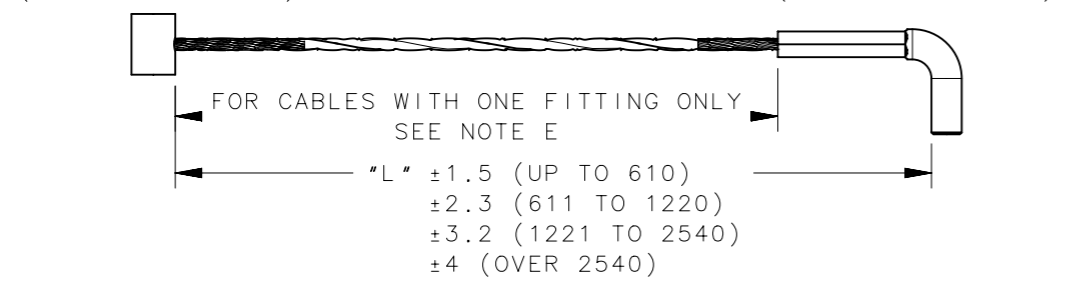
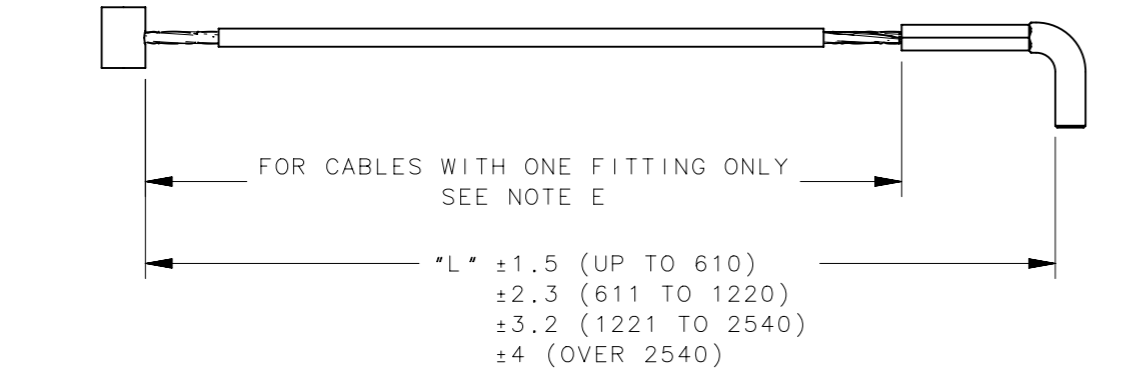


REVISION HISTORY			
REV	DATE	BY	DESCRIPTION
J	17NOV2017	VK/YGC	PRN: P2017-2827

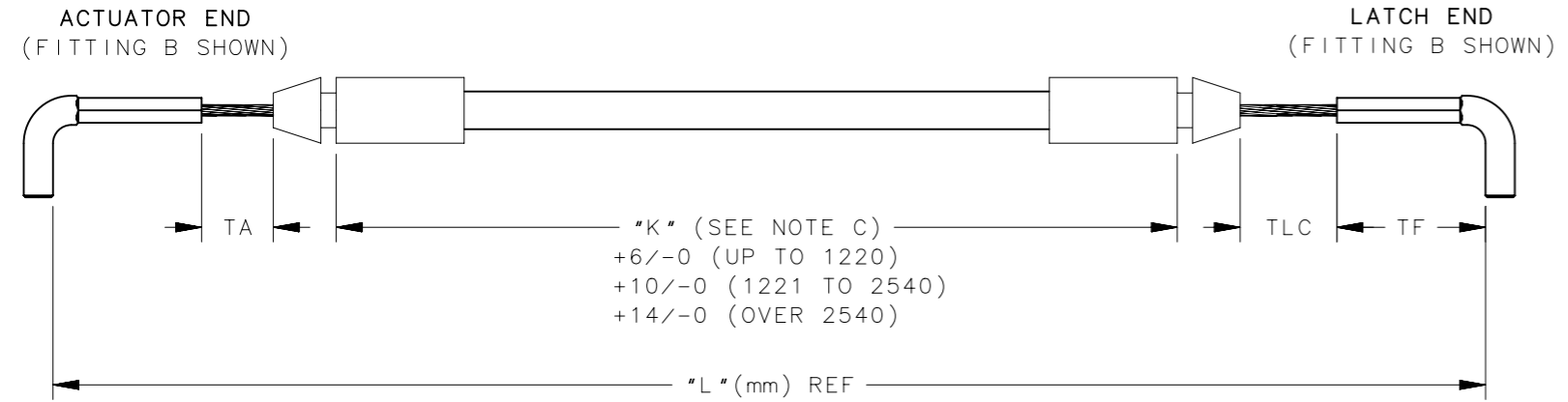
**BARE CABLES (1)**  
(P/N AC-CAB0-1-LLLL SHOWN)



**COATED CABLES (2)**  
(P/N AC-CAB0-2-LLLL SHOWN)



**JACKETED CABLES WITH CONICAL END COUPLINGS (3)**  
(P/N AC-CBB0-3-LLLL-TTT SHOWN)



"T" = TA+TLC+TF(LATCH END ONLY)  
±1.5 ("L" UP TO 2540)  
±2.3 ("L" OVER 2540)  
SEE NOTE D

CONDUIT TYPE	"K" DIMENSION	MIN "K"
TYPE 3	L-T-17.2mm	52mm

**PART NUMBER**

AC-C[ ]-[ ]-[ ]-[ ]-[ ]-[ ]-[ ]-[ ]-[ ]-[ ]-[ ]

ACTUATOR FITTING TYPE  
(SEE SHEET 4)

LATCH FITTING TYPE  
(SEE SHEET 4)

SEE NOTE E WHEN SELECTING CABLES WITH ONE FITTING

CABLE EXTENSION (mm) "T" = TA+TLC+TF\*  
\*(LATCH END ONLY)  
3 DIGITS(Example: 55mm = 055)  
(OMIT FOR CABLE OPTION 1 & 2)  
(SEE NOTE D)

CABLE LENGTH (mm) "L"  
4 DIGITS (Example: 250mm = 0250)

SPRING OPTION  
(LATCH FITTING END ONLY)  
0 = WITHOUT SPRING(FOR ALL CABLE TYPES)  
1 = WITH SPRING (FOR 3, 6 & 7 CABLE TYPES ONLY)  
NOTE: TLC MUST BE 28mm WHEN SPRING IS USED

CABLE AND CONDUIT OPTION	
1	BARE CABLE
2	COATED CABLE
3	JACKETED CABLE WITH CONICAL END COUPLINGS
4	JACKETED CABLE WITH THREADED AND SNAP RING RETAINERS
5	JACKETED CABLE WITH CONICAL END COUPLING AND SNAP RING RETAINER
6	JACKETED CABLE WITH SNUB END COUPLING AND THREADED RETAINER
7	JACKETED CABLE WITH SNUB AND CONICAL END COUPLING

**NOTES:**

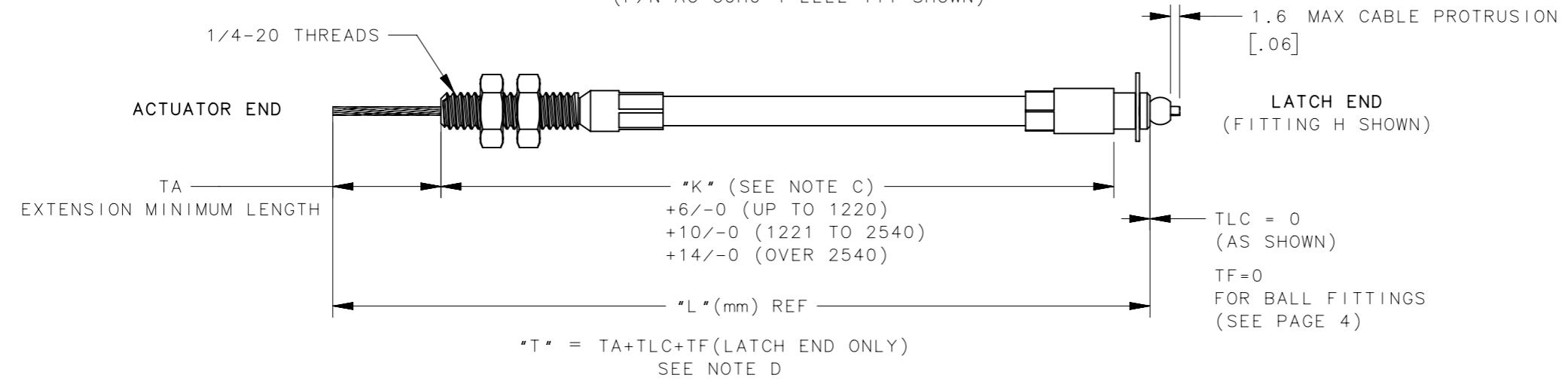
- A. FITTINGS ON CABLES SHOWN FOR REFERENCE ONLY. FITTINGS DEPENDENT ON ACTUATOR AND LATCH SELECTED.
- B. DATUM POINTS TO DEFINE LENGTH FOR SPECIFIC FITTINGS SHOWN ON SHEET 4.
- C. "K" IS A DERIVED DIMENSION BASED ON CABLE EXTENSION AND CONDUIT TYPE.
- D. "T" DIMENSION = TA+TLC+TF(LATCH END ONLY), WHERE:  
TA = BARE CABLE LENGTH BETWEEN ACTUATOR END FITTING AND CONDUIT(SEE ACTUATOR J DRAWING).  
TLC = BARE CABLE LENGTH BETWEEN CONDUIT AND LATCH END FITTING.  
TF = LATCH END FITTING VALUE FROM PAGE 4. CONTACT SOUTHCO FOR "T" DIMENSION OF OTHER FITTING COMBINATIONS.
- E. WHEN CABLE WITH ONLY ONE FITTING IS SELECTED, "L" DIMENSION IS FROM FITTING DATUM LINE TO END OF CABLE. REPLACE OMITTED FITTING TYPE WITH "0", (example: AC-CA00-7-LLLL-TTT).

THIRD ANGLE PROJECTION				 CONNECT · CREATE · INNOVATE		
	TOLERANCES UNLESS OTHERWISE NOTED			DESCRIPTION		
ALL DIMENSIONS WITHOUT TOLERANCES ARE FOR REFERENCE ONLY.			AC CABLE ASSEMBLY			
PROPRIETARY ITEM	SIZE	SYSTEM	DWG NO.	J-AC-C		
EXCEPT FOR USES EXPRESSLY GRANTED IN WRITING, INFORMATION DISCLOSED HEREON IS CONFIDENTIAL AND ALL RIGHTS, PATENT AND OTHERWISE, ARE RESERVED BY SOUTHCO, INC.	A3	NX		DRAWN BY	DATE	SCALE
				ACH/MJS	15JUL2008	1:1
	PER ASME Y14.5M-1994					SHEET 1 OF 4

REVISION HISTORY			
REV	DATE	BY	DESCRIPTION
J	17NOV2017	VK/YGC	PRN: P2017-2827

### JACKETED CABLES WITH THREADED AND SNAP RETAINERS (4)

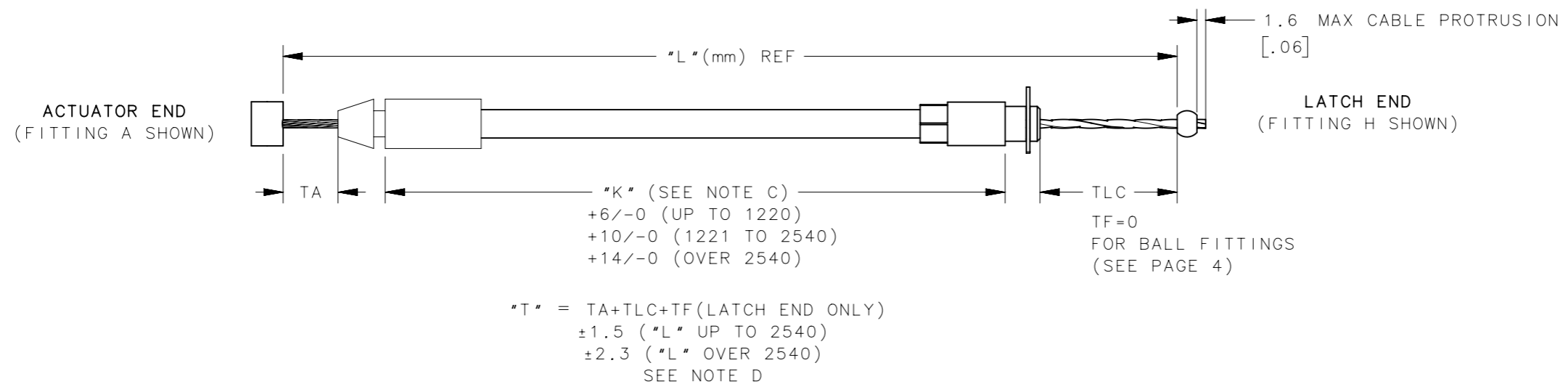
(P/N AC-C0H0-4-LLLL-TTT SHOWN)



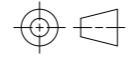

CONDUIT TYPE	"K" DIMENSION	MIN "K"
TYPE 4	L-T-6.4mm	82mm

### JACKETED CABLES WITH CONICAL END COUPLING AND SNAP RING RETAINERS (5)

(P/N AC-CAH0-5-LLLL-TTT SHOWN)

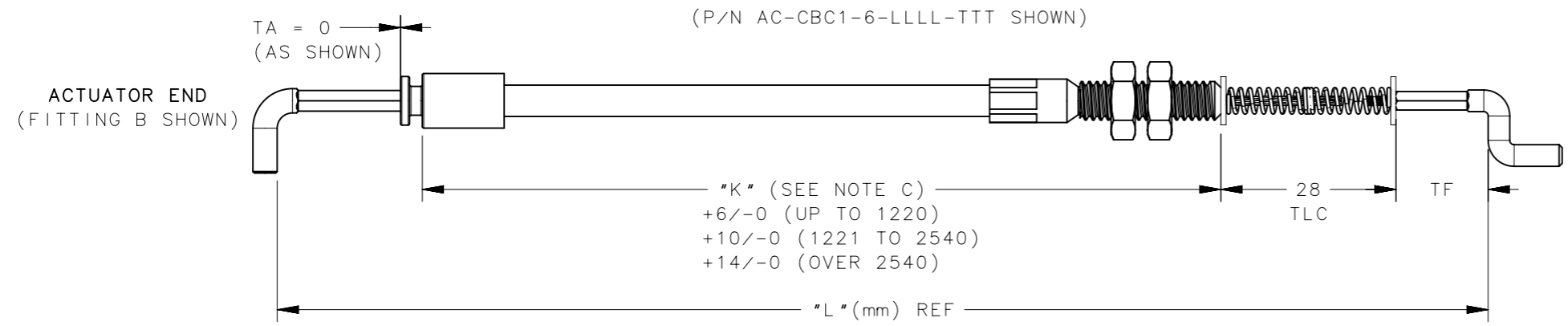


CONDUIT TYPE	"K" DIMENSION	MIN "K"
TYPE 5	L-T-15mm	62mm

THIRD ANGLE PROJECTION  MILLIMETERS [IN] TOLERANCES UNLESS OTHERWISE NOTED ALL DIMENSIONS WITHOUT TOLERANCES ARE FOR REFERENCE ONLY. PROPRIETARY ITEM <small>EXCEPT FOR USES EXPRESSLY GRANTED IN WRITING, INFORMATION DISCLOSED HEREON IS CONFIDENTIAL AND ALL RIGHTS, PATENT AND OTHERWISE, ARE RESERVED BY SOUTHCO, INC.</small>	 CONNECT • CREATE • INNOVATE		
	DESCRIPTION AC CABLE ASSEMBLY		
	SIZE A3	SYSTEM NX	DWG NO. J-AC-C
	PER ASME Y14.5M-1994	DRAWN BY ACH/MJS	DATE 15JUL2008
	SCALE 1:1	SHEET 2 OF 4	

REVISION HISTORY			
REV	DATE	BY	DESCRIPTION
J	17NOV2017	VK/YGC	PRN: P2017-2827

JACKETED CABLES WITH SNUB END COUPLING AND THREADED RETAINER(6)

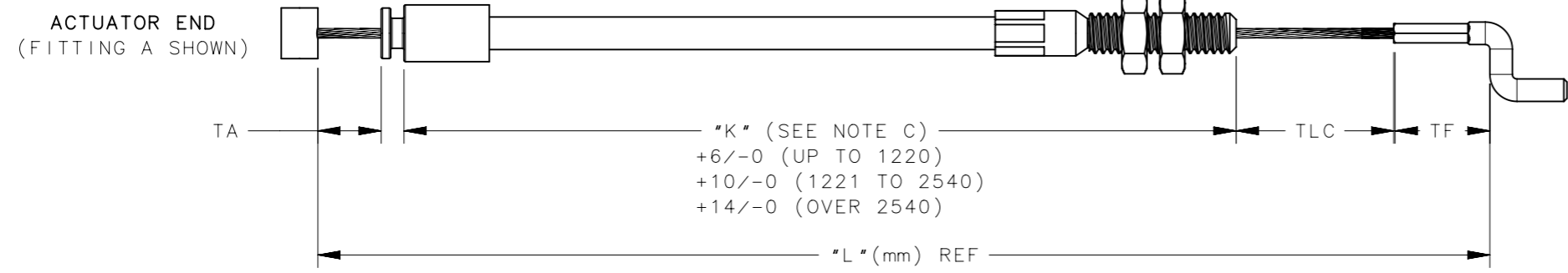


LATCH END  
(FITTING C SHOWN)

"T" = TA+TLC+TF(LATCH END ONLY)  
±1.5 ("L" UP TO 2540)  
±2.3 ("L" OVER 2540)  
SEE NOTE D

CONDUIT TYPE	"K" DIMENSION	MIN "K"
TYPE 6	L-T-3.6mm	82mm

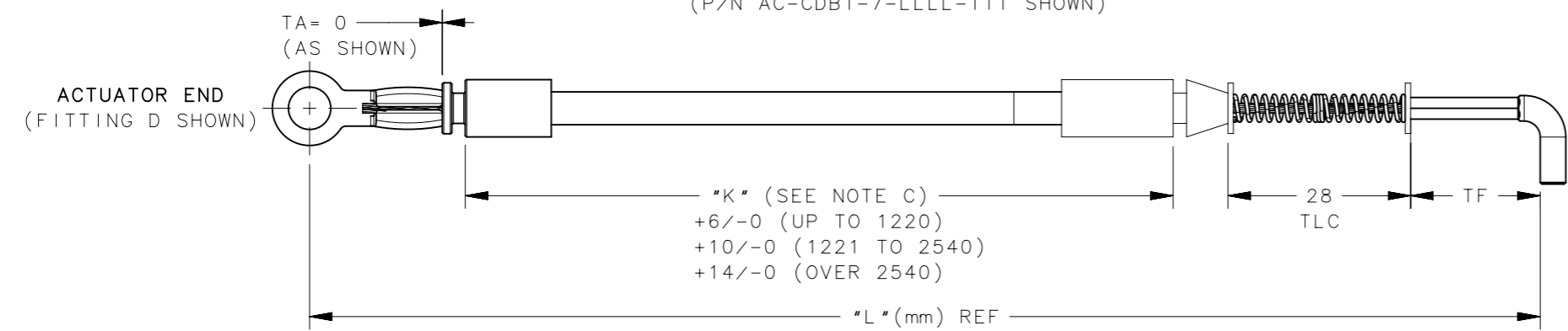
(P/N AC-CAC0-6-LLLL-TTT SHOWN)



LATCH END  
(FITTING C SHOWN)

"T" = TA+TLC+TF(LATCH END ONLY)  
±1.5 ("L" UP TO 2540)  
±2.3 ("L" OVER 2540)  
SEE NOTE D

JACKETED CABLES WITH SNUB AND CONICAL END COUPLINGS (7)



LATCH END  
(FITTING B SHOWN)

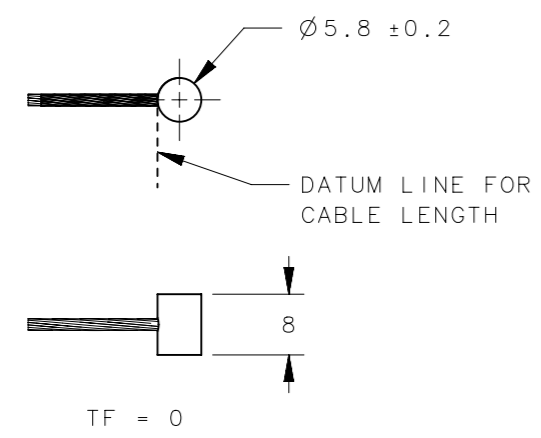
"T" = TA+TLC+TF(LATCH END ONLY)  
±1.5 ("L" UP TO 2540)  
±2.3 ("L" OVER 2540)  
SEE NOTE D

CONDUIT TYPE	"K" DIMENSION	MIN "K"
TYPE 7	L-T-12.2mm	52mm

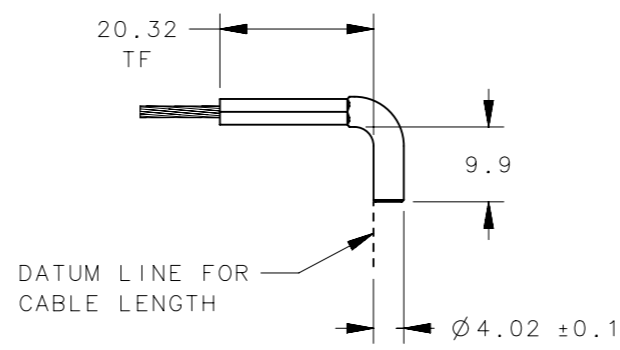
THIRD ANGLE PROJECTION 	 CONNECT • CREATE • INNOVATE				
				MILLIMETERS [IN]	
	TOLERANCES UNLESS OTHERWISE NOTED				
	ALL DIMENSIONS WITHOUT TOLERANCES ARE FOR REFERENCE ONLY.				
PROPRIETARY ITEM <small>EXCEPT FOR USES EXPRESSLY GRANTED IN WRITING, INFORMATION DISCLOSED HEREON IS CONFIDENTIAL AND ALL RIGHTS, PATENT AND OTHERWISE, ARE RESERVED BY SOUTHCO, INC.</small>	PER ASME Y14.5M-1994	DESCRIPTION AC CABLE ASSEMBLY	SIZE A3	SYSTEM NX	DWG NO. J-AC-C
		DRAWN BY ACH/MJS	DATE 15JUL2008	SCALE 1:1	SHEET 3 OF 4

REVISION HISTORY			
REV	DATE	BY	DESCRIPTION
J	17NOV2017	VK/YGC	PRN: P2017-2827

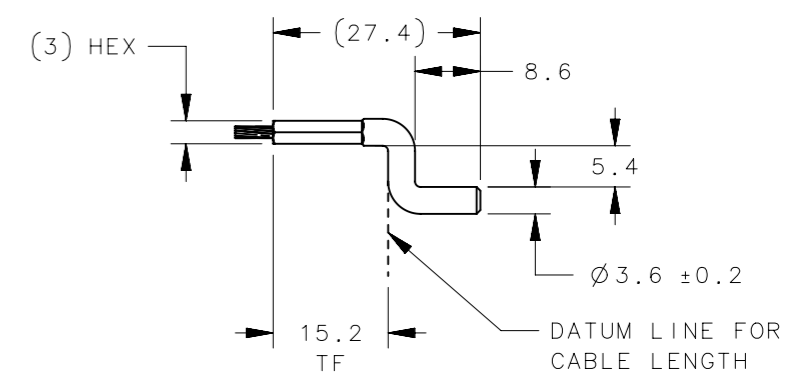
FITTING A (BARREL FITTING) DIE CAST ZINC  
 FITTING J (BARREL FITTING) STAINLESS STEEL



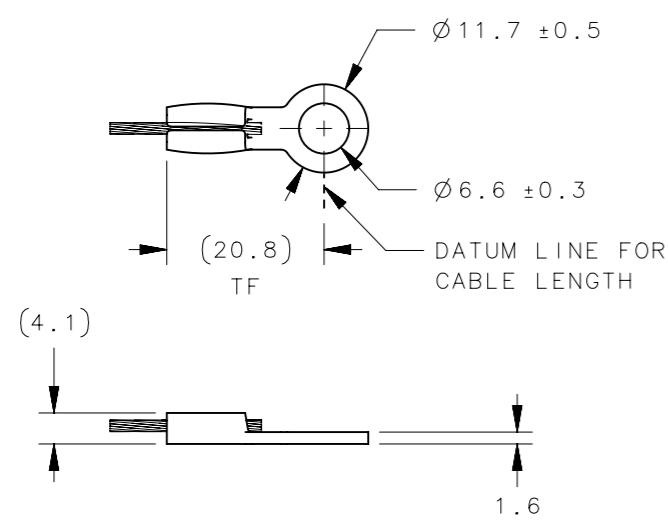
FITTING B (L FITTING) STEEL  
 FITTING K (L FITTING) STAINLESS STEEL



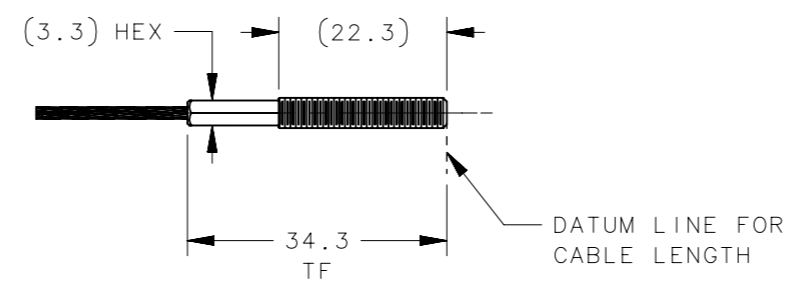
FITTING C (Z FITTING) STEEL



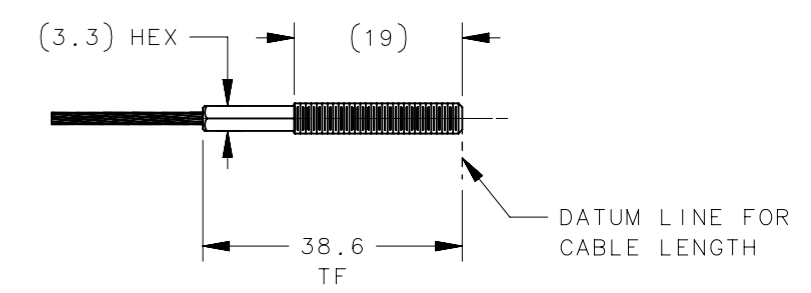
FITTING D (EYELET FITTING) STAINLESS STEEL



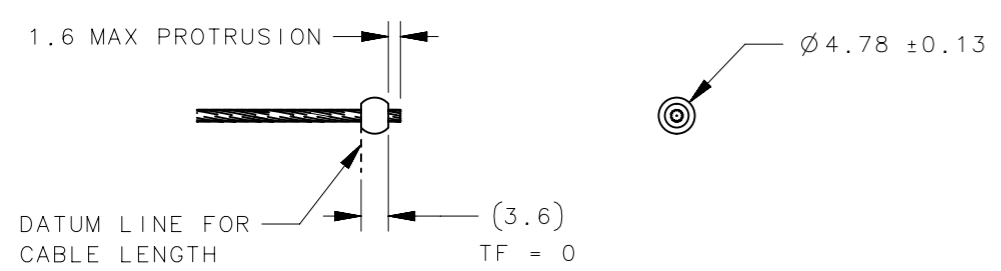
FITTING E (THREADED FITTING) STEEL  
 M4 THREAD



FITTING F (THREADED FITTING) STEEL  
 8-32 THREAD



FITTING H (BALL FITTING) STAINLESS STEEL



-	END COUPLING	NYLON	BLACK
-	SPRING	STAINLESS STEEL	NATURAL
-	JACKET	POLYPROPYLENE	BLACK
-	LINER	ACETAL	WHITE
-	CABLE	STAINLESS STEEL	NATURAL
-	WASHER(2)	STAINLESS STEEL	NATURAL
K	L FITTING	300 SERIES STAINLESS STEEL	NATURAL
J	BARREL FITTING	300 SERIES STAINLESS STEEL	NATURAL
H	BALL FITTING	300 SERIES STAINLESS STEEL	NATURAL
F	THREADED TERMINAL 8-32	STEEL	ZINC PLATED
E	THREADED TERMINAL M4	STEEL	ZINC PLATED
D	EYELET FITTING	300 SERIES STAINLESS STEEL	NATURAL
C	Z FITTING	STEEL	ZINC PLATED
B	L FITTING	STEEL	ZINC PLATED
A	BARREL FITTING	ZAMAK 5	NATURAL
FITTING VARIABLE	TYPE OF COMPONENT	MATERIAL	FINISH

THIRD ANGLE PROJECTION			
MILLIMETERS [IN]			
SURFACE AREA	TOLERANCES UNLESS OTHERWISE NOTED	DESCRIPTION	
VOLUME	ALL DIMENSIONS WITHOUT TOLERANCES ARE FOR REFERENCE ONLY.	AC CABLE ASSEMBLY FITTINGS	
PROPRIETARY ITEM	PER ASME Y14.5M-1994	SIZE A3	SYSTEM NX
EXCEPT FOR USES EXPRESSLY GRANTED IN WRITING, INFORMATION DISCLOSED HEREON IS CONFIDENTIAL AND ALL RIGHTS, PATENT AND OTHERWISE, ARE RESERVED BY SOUTHCO, INC.	DRAWN BY ACH/MJS	DATE 15JUL2008	DWG NO. J-AC-C
		SCALE 1:1	SHEET 4 OF 4