



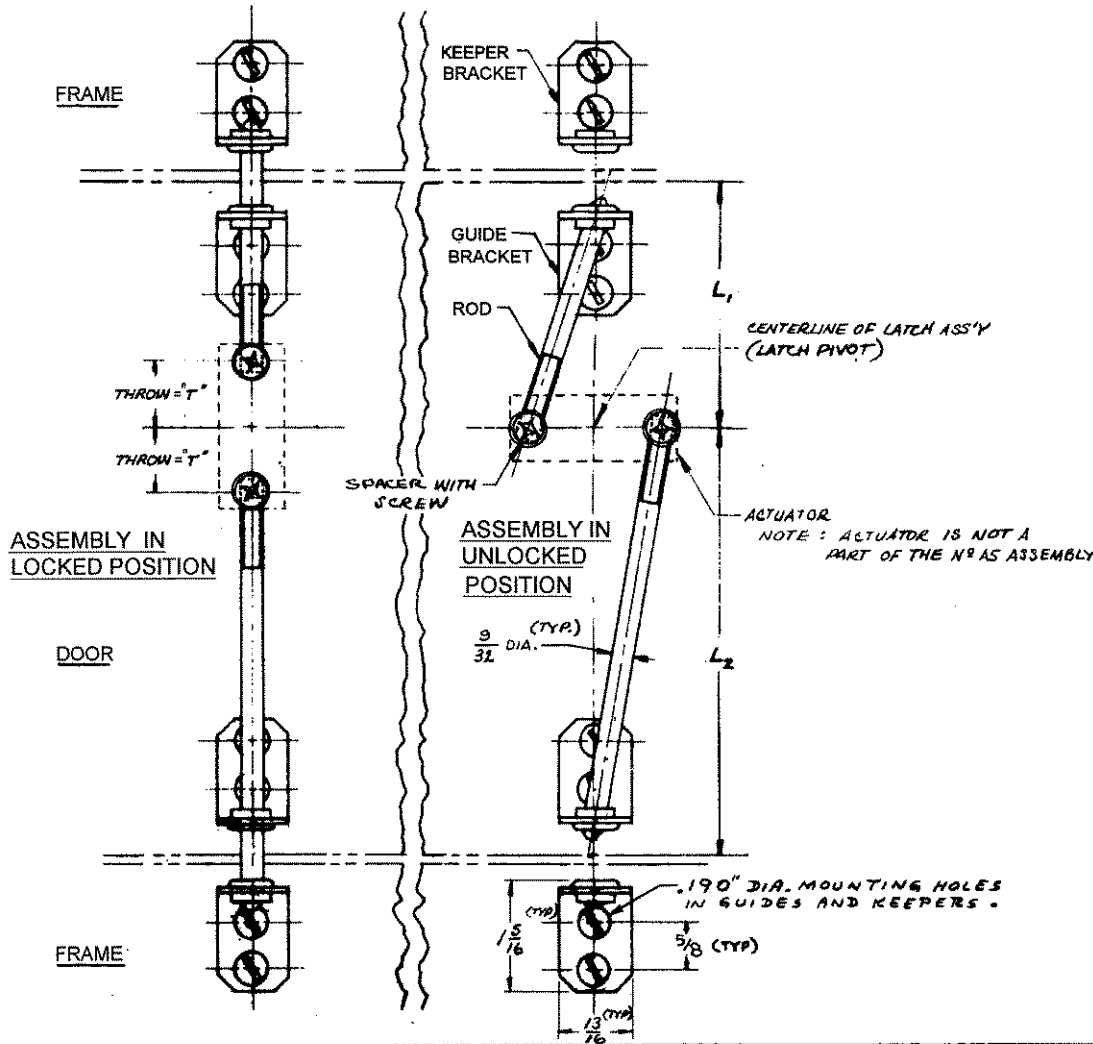
# No. A5 RODS, GUIDES, AND KEEPERS

FOR USE WITH ACTUATORS WHICH HAVE .257 DIA. HOLES

DATE	DRAWN	CHKD	SCALE	DRAWING NUMBER
12-19-70	ACZ		NTS	J-A5-22-10

REV. LET.	DATE	BY-CHKD	REVISIONS	ITEM	COMPONENT	PART N <sup>o</sup>	MATERIAL	FINISH
A	1-2-80	NAZ	ADDED .190" DIA HOLE NOTE	ROD ASSEMBLY		A5-22-XXX-10		
B	1-18-82	ATE	PRN: S-1-01		ROD	A5-52-XXX-10	2011-T3 ALUM.	NATURAL
C	6-26-86	SS	PRN: A5-06		SPACER	A5-41-101-10	12L14 STEEL	DACROTTIZED*
D	12 JAN 93	SC	PRN: S-1-03		SCREW	45-11-101-11	LOW CARB. STL.	ZINC PLATE
					GUIDE BRACKET (KEEPER BRACKET) - 2 SUPPLIED	A5-86-101-11	1010 STEEL & NYLON	STEEL-DACROTTIZED THERMOPLASTIC-WHITE

\*REGISTERED TRADEMARK OF DIAMOND SHAMROCK CORP.



### TO SELECT PROPER ROD LENGTHS

1. DETERMINE THE CENTERLINE POSITION OF THE LATCH ASSEMBLY ALONG THE ACTION LINE OF THE RODS THAT YOU REQUIRE. FROM THIS POSITION, DETERMINE THE LENGTH THAT EACH ROD MUST CLEAR WHEN IT IS IN THE UNLOCKED POSITION. THIS OVERALL LENGTH SHOULD TAKE INTO ACCOUNT THE ALLOWABLE TOLERANCES IN THE LATCH ASSEMBLY LOCATION AND THE FRAME CLEARANCE DIMENSION AND ANY ADDITIONAL CLEARANCE YOU MAY DESIRE TO INSURE SMOOTH OPERATION.
2. THE LENGTH(S) DETERMINED FROM STEP #1 SHOULD BE SPECIFIED AS THE ROD LENGTH TO THE NEXT SMALLER 1/10 (.10) INCH. E.G. IF YOU HAVE DETERMINED THAT THE FRAME CLEARANCE DIMENSION (MIN.) IS 27.88" THEN ROD LENGTH SHOULD BE SPECIFIED AS 27.8" NOTE: A ROD ASSEMBLY CONSISTS OF A SINGLE ROD PLUS A GUIDE AND KEEPER.
3. THE EFFECTIVE OVERALL LENGTH OF EACH ROD IN THE LOCKED POSITION WILL BE THE LENGTH OF THE ROD PLUS THE THROW "T" OF THE LATCH ASSEMBLY.
4. GUIDE ASS'Y(S) AND KEEPER ASS'Y(S) SHOULD BE IN LINE WITH EACH OTHER AND WITH THE CENTER OF THE LATCH POINT, AS SHOWN. GUIDE ASS'Y(S) AND KEEPER ASS'Y(S) SHOULD BE MOUNTED AS SHOWN IN FIGURES AT LEFT. GUIDE ASS'Y(S) AND/OR KEEPER ASS'Y(S) MAY BE REPLACED BY HOLES MADE IN YOUR DOOR AND/OR FRAME.

### ASSEMBLY INSTRUCTIONS

1. ATTACH THE KEEPER ASS'Y(S) AND GUIDE ASS'Y(S) TO FRAME AND DOOR
2. PASS NOSE END OF ROD THROUGH GUIDE AND ALIGN THE HOLE IN THE ROD WITH THE STUD IN THE ACTUATOR. POSITION SPACER IN ACTUATOR HOLE. DROP IN SCREW AND THREAD INTO TAPPED HOLE IN ROD.

PROPRIETARY ITEM - EXCEPT FOR USES EXPRESSLY GRANTED IN WRITING, INFORMATION DISCLOSED HEREON IS CONFIDENTIAL AND ALL RIGHTS, PATENT AND OTHERWISE, ARE RESERVED BY SOUTHCO, INC.

TOLERANCE UNLESS OTHERWISE NOTED  
 METRIC MM - TWO PLACE (XX) \* — ONE PLACE (X) \* —  
 INCH - DECIMALS \* — FRACTIONS \* — ANGLES \* —

DRAWING NUMBER

J-A5-22-10