

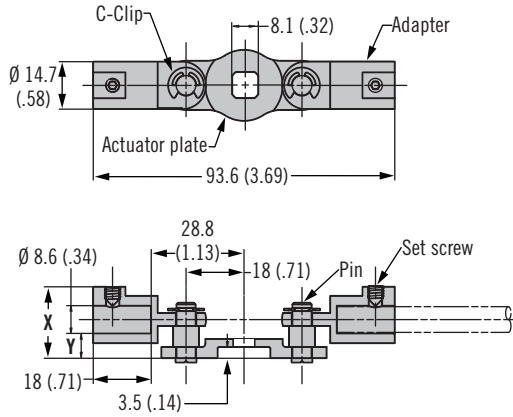
# A5 Modular System

## Actuator plates

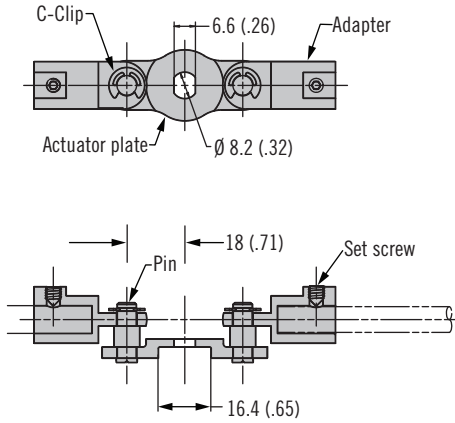


### Actuator Plate

#### A5-90-101-11

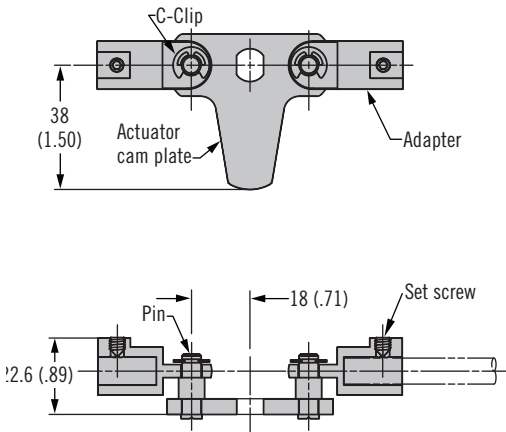


#### A5-90-301-11

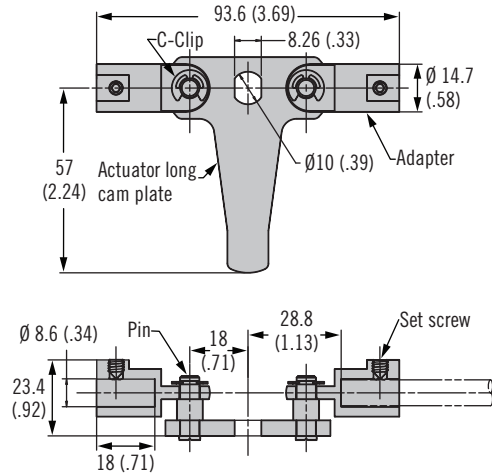


Part Number	X	Y
A5-90-101-11	22.2 (0.87)	4.7 (0.18)
A5-90-104-11	25.2 (0.99)	7.7 (0.30)
A5-90-401-11	22.6 (0.89)	5.1 (0.20)
A5-90-501-11	23.4 (0.92)	5.9 (0.23)

#### A5-90-401-11 (Short Cam)



#### A5-90-501-11 (Long Cam)



Actuator Plate Part Number								
Operating Latch Families								
	Page 118-127			Page 192-193		Page 101	Page 134-135	
Actuator Plate Part Number	A5-90-101-11					A5-90-301-11	A5-90-401-11	A5-90-501-11

- Modular actuators to suit multiple latch families using A5 modular rods

### Material and Finish

Zinc alloy, steel, zinc plated and stainless steel set screw

### To Select Correct Actuator:

1. Choose actuator plate to match latch family (one per latch required)
2. Order rods and rod guides from page 198

### Part Number

Actuator plate see table  
 Rods (see page 198)  
 Rod guides (see page 198)

Other options available. For complete details on variety, part numbers, installation and specification, go to



[www.southco.com/A5](http://www.southco.com/A5)



# A5 Modular System

## Rods and rod guides

### • Modular rod and rod guides

#### Material and Finish

Rods: Aluminum or steel, zinc plated  
 Rod rollers: Glass-filled nylon, black  
 Rod guides: Glass-filled nylon, black with steel, zinc plated hardware

#### To Select Correct Assembly:

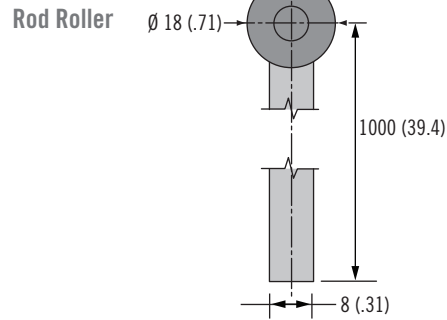
1. Choose actuator plate to match latch family or linear actuator and 2 adaptors. See drawing J-A5-F30 for rod type and latch family compatibility.
2. Order rod guides (2 per assembly). Fixed rod guide recommended for fixed point rod. Adjustable rod guide recommended for rod roller assembly.
3. Order rods (2 per assembly)

#### Part Number

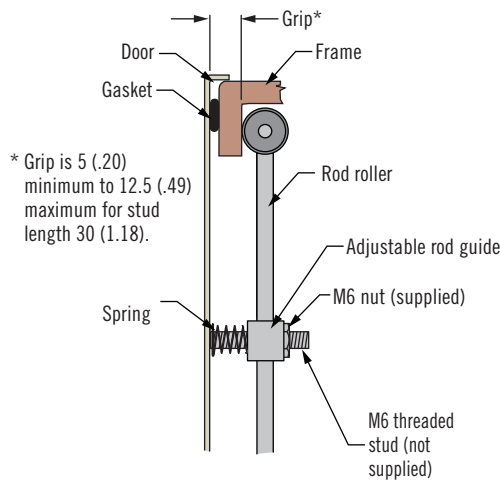
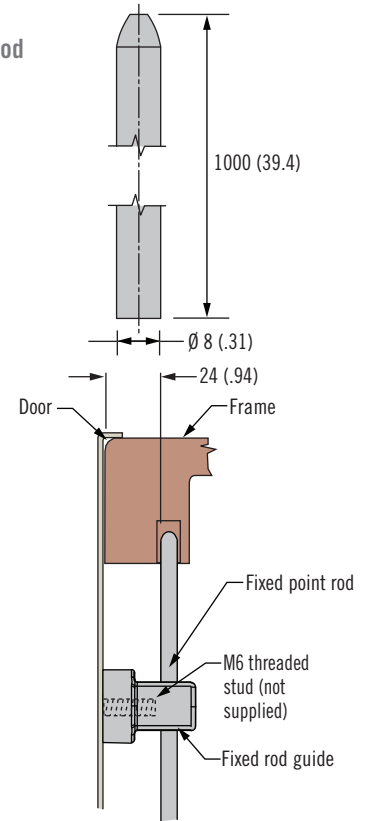
Order rod and rod guide separately see tables

Other rod lengths available. Please contact Southco

#### Rods



#### Fixed Point Rod

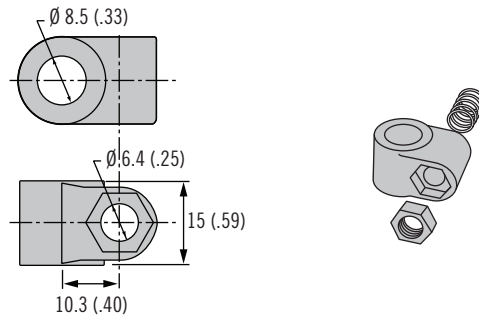


Material	Fixed Point Rod Part Number
Aluminum	A5-55-1000-10
Steel	A5-55-1000-11

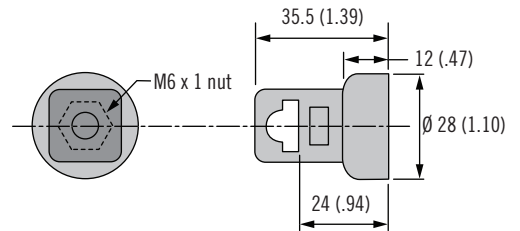
Material	Fixed Point Rod Part Number
Aluminum	A5-55-1000-10
Steel	A5-55-1000-11

#### Rod Guides

##### Adjustable



##### Fixed



Adjustable Rod Guide Part Number (includes 2 rod guides, 2 springs and 2 M6 nuts)
A5-87-401

Fixed Rod Guide Part Number (one piece supplied)
A5-81-301-71

Other options available. For complete details on variety, part numbers, installation and specification, go to

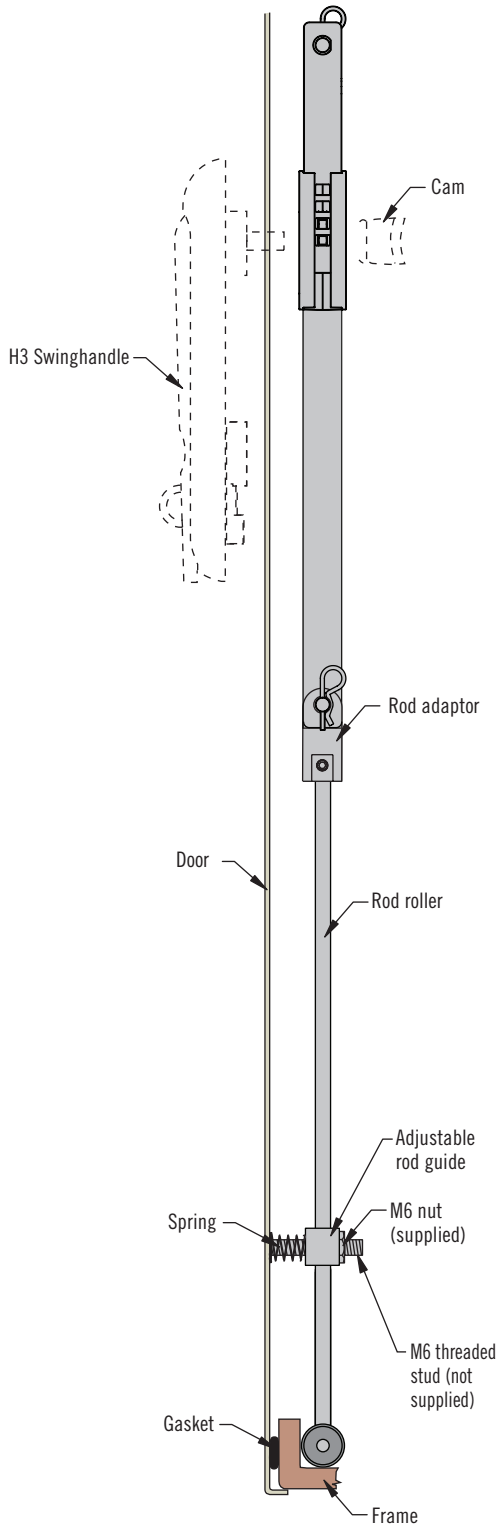


[www.southco.com/A5](http://www.southco.com/A5)

Dimensions in millimeters (inch) unless otherwise stated

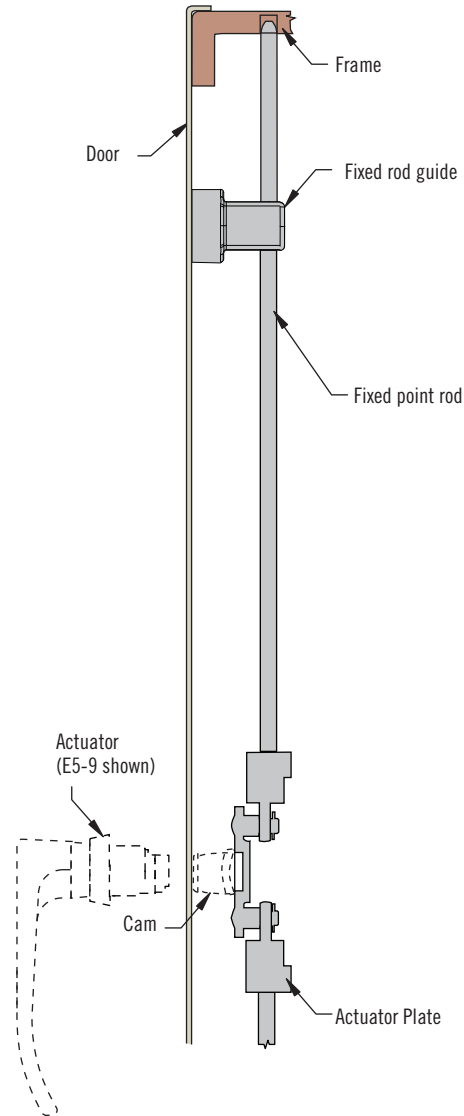
### Linear Actuator Assembly

(adjustable with rod roller shown)



### Actuator Plate Assembly

(fixed point shown)



### Notes

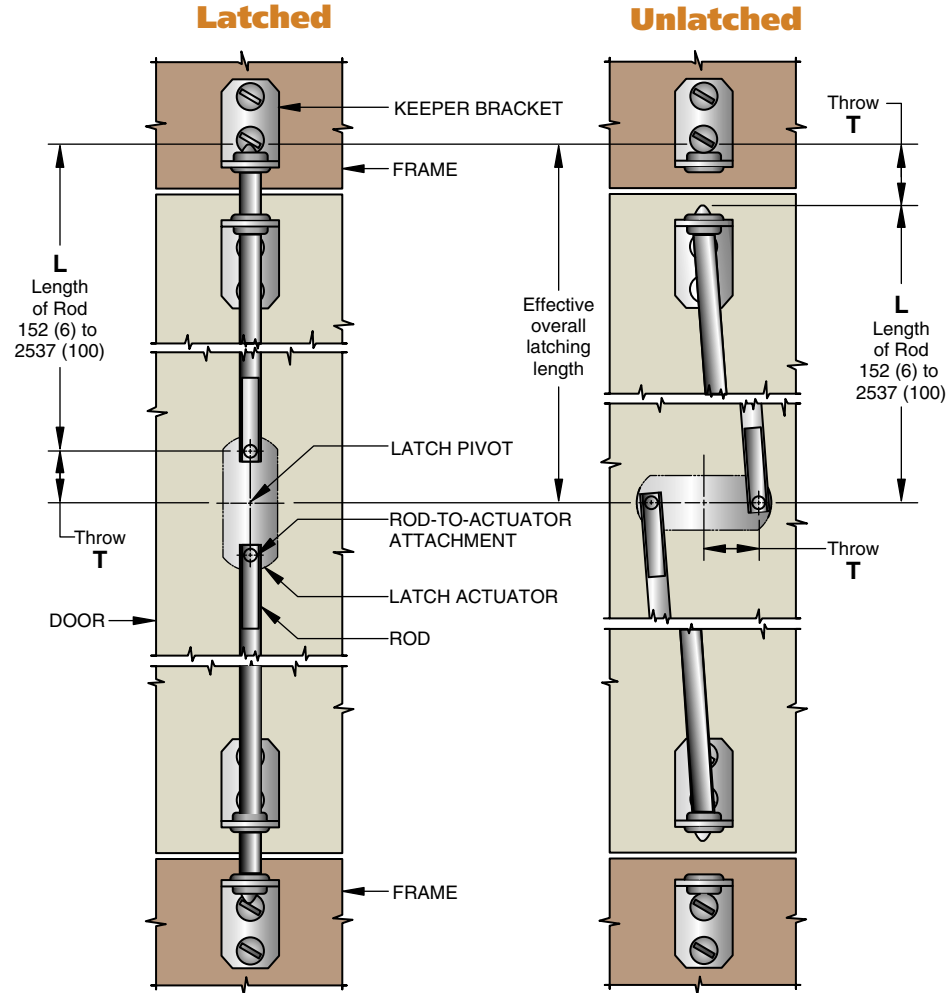
Modular system allows for any configuration of rod and rod guides



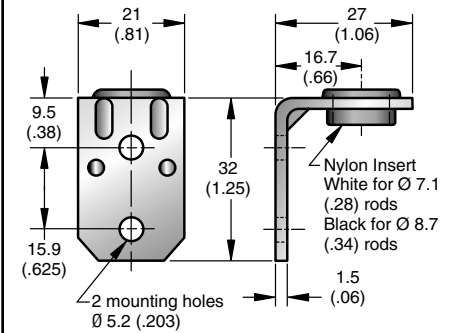
# Southco® Multi-point Latching Systems

## Fixed-rod Latching System

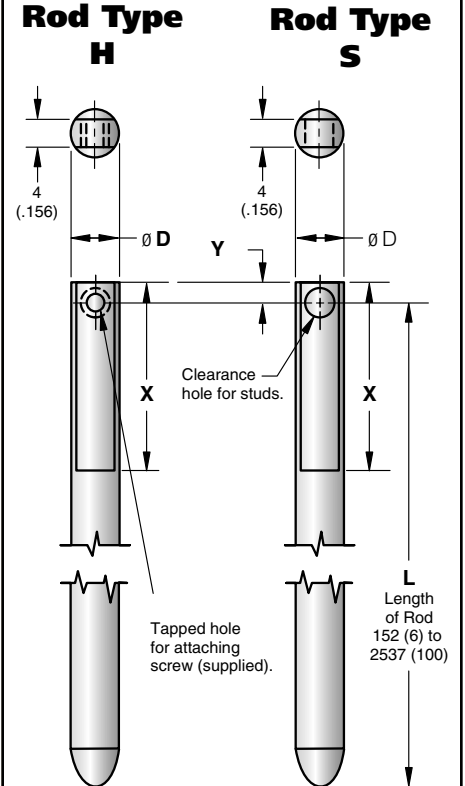
- For 2- and 3-point latching
- Assemblies include rods and guides
- Operates with multiple Southco® latch families



### Guide and keeper bracket detail



### Rod detail



BASIC PART NUMBER	ROD ASSEMBLY TYPE	Ø D	HOLE SIZE	X	Y
A5-21-XXX-10	S	7.1 (.28)	Ø 4.2 (.166) clear.	30 (1.19)	3.2 (.13)
A5-22-XXX-10	H		Tapped No. 8-32		
A5-31-XXX-10	S	8.7 (.34)	Ø 5 (.196) clear.	44.5 (1.75)	4.7 (.19)
A5-32-XXX-10	H		Tapped No. 8-32		

### STANDARD ROD LENGTHS

PART NUMBER XXX	L
120	305 (12.0)
240	610 (24.0)
360	914 (36.0)
480	1219 (48.0)

millimeter (inch)  
millimeter (inch)

Dimensions without tolerances are for reference only.

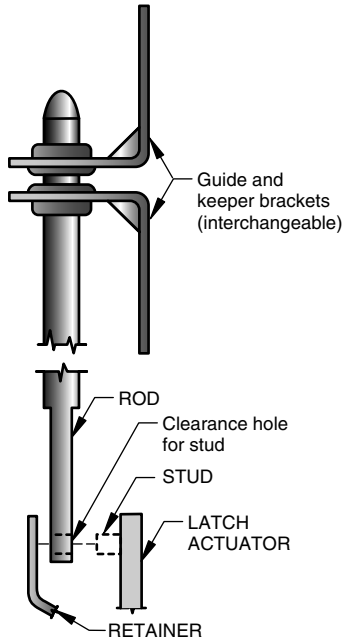
Multi-point Latching System

# Southco® Multi-point Latching Systems

## Fixed-rod Latching System

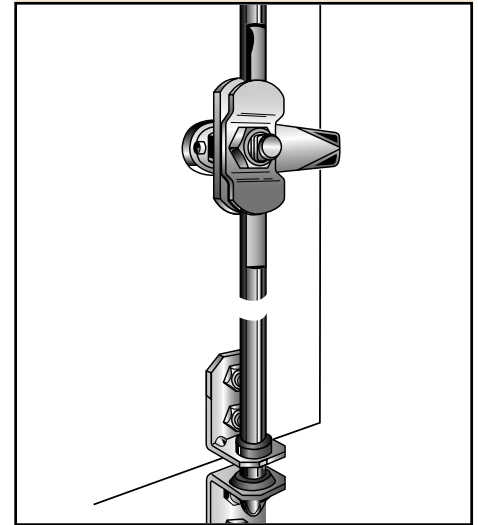
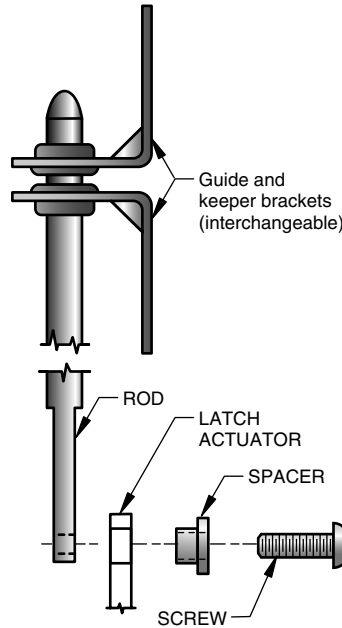
### Rod Type S

To attach rod to latch actuators having integral studs and rod retainer.



### Rod Type H

To attach rod to latch actuators having Ø 6.4 (.250) holes.



### Material and Finish

RODS: Aluminum, natural.

BRACKETS: 1010 Steel, zinc plate, chromate plus sealer.






BRACKET INSERTS: Nylon, white or black.

FOR TYPE H ONLY, SPACERS: 12L14 Steel, zinc plate, chromate plus sealer.

SCREWS: Low carbon steel, zinc plated with bright chromate dip.

**To order rod assemblies,** (assembly consists of a guide, keeper and rod):

1. Determine basic part number from table below.

OPERATING LATCH FAMILIES	SIZE/STYLE	BASIC PART NUMBER	ROD TYPE	T
No. 01 Flush Cup Latches 	Small	A5-21-XXX-10	S	12.7 (.50)
	Mid-size	A5-31-XXX-10		19 (.75)
No. 24 Flush Cup Latches 	2 and 3 point assemblies (non-locking)	A5-32-XXX-10	H	17.5 (.69)
No. 62 Lift and Turn Latches 	Heavy Duty			31.8 (1.25)
	Large			22.2 (.88)
	Large (Flush)			31.8 (1.25)
No. 68 Bail and T-handle Latches 	Mid-size T-handle			17.5 (.69)
	Small T-handle			A5-22-XXX-10
	Large T-handle. Bail Handle (Series 80)	A5-32-XXX-10	22.2 (.88)	
No. 92 L-handle and T-handle Latches 	ALL	A5-21-XXX-10	S	19 (.75)

2. Effective overall latching lengths = L length + T. L length rod 152 (6) to 2537 (99.9) MAX. must clear frame in unlatched position.

3. Select XXX part number based on length required. See Standard Rod Lengths Table for stocked lengths. Custom lengths are available contact Southco for details.

4. Order 1 latch with actuator option (as appropriate), 2 Rod Assemblies for a complete system. See appropriate page for latch part number.

### Product Strength Guidelines

(To assist in your product selection; samples are available for your evaluation.)

**Flammability Rating: UL94 - V2**

millimeter (inch)  
millimeter  
(inch)

Dimensions without tolerances are for reference only.

Multi-point Latching System