



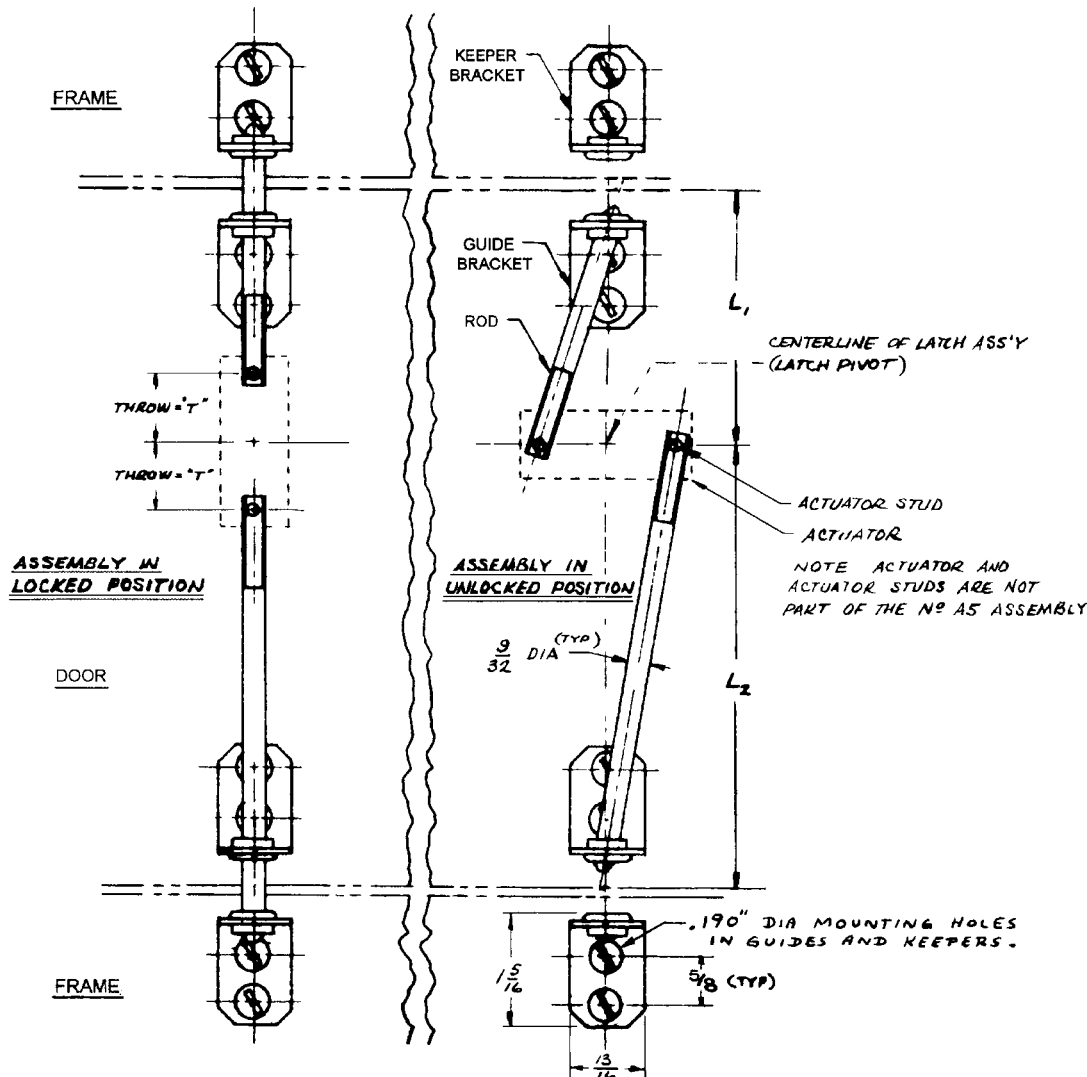
No. A5 RODS, GUIDES, AND KEEPERS

FOR USE WITH ACTUATORS WHICH HAVE .156 DIA. (OR SMALLER) STUDS

| DATE | DRAWN | CHKD | SCALE | DRAWING NUMBER |
|----------|-------|------|-------|----------------|
| 12-19-78 | ACZ | | NTS | J-A5-21-10 |

| REV LET | DATE | BY CHKD | REVISIONS | ITEM | COMPONENT | PART N ^o | MATERIAL | FINISH |
|---------|-----------|---------|--------------------------|--------------|-----------------------------------|---------------------|-------------------------|--|
| A | 1-2-80 | HAR | ADDED .190 DIA HOLE NOTE | ROD ASSEMBLY | | A5-21-XXX-10 | | |
| B | 1-10-82 | AJE | PRN 5-1-01 | | ROD | A5-51-XXX-10 | 2011-T3 ALUM | NATURAL |
| C | 6-26-86 | SS | PRN: A5-06 | | GUIDE BRACKET (KEEPER BRACKET) | A5-86-101-11 | 1010 STEEL 3/4 NYLON | STEEL-DACROTIZED* THERMOPLASTIC-WHITE |
| D | 12 JAN 93 | JC | PRN 5-1-03 | | ~ 2 SUPPLIED ~ | | | |

* REGISTERED TRADEMARK OF DIAMOND SHAMROCK CORP.



TO SELECT PROPER ROD LENGTHS

1. DETERMINE THE CENTERLINE POSITION OF THE LATCH ASSEMBLY ALONG THE ACTION LINE OF THE RODS THAT YOU REQUIRE. FROM THIS POSITION, DETERMINE THE LENGTH THAT EACH ROD MUST CLEAR WHEN IT IS IN THE UNLOCKED POSITION. THIS OVERALL LENGTH SHOULD TAKE INTO ACCOUNT THE ALLOWABLE TOLERANCES IN THE LATCH ASSEMBLY LOCATION AND THE FRAME CLEARANCE DIMENSION AND ANY ADDITIONAL CLEARANCE YOU MAY DESIRE TO INSURE SMOOTH OPERATION
2. THE LENGTH(S) DETERMINED FROM STEP #1 SHOULD BE SPECIFIED AS THE ROD LENGTH TO THE NEXT SMALLER 1/10 (.10) INCH. E.G. IF YOU HAVE DETERMINED THAT THE FRAME CLEARANCE DIMENSION (MIN) IS 27.88" THEN ROD LENGTH SHOULD BE SPECIFIED AS 27.8" NOTE : A ROD ASSEMBLY CONSISTS OF A SINGLE ROD PLUS A GUIDE AND KEEPER.
3. THE EFFECTIVE OVERALL LENGTH OF EACH ROD IN THE LOCKED POSITION WILL BE THE LENGTH OF THE ROD PLUS THE THROW "T" OF THE LATCH ASSEMBLY
4. GUIDE ASS'Y(S) AND KEEPER ASS'Y(S) SHOULD BE IN LINE WITH EACH OTHER AND WITH THE CENTER OF THE LATCH POINT, AS SHOWN. GUIDE ASS'Y(S) AND KEEPER ASS'Y(S) SHOULD BE MOUNTED AS SHOWN IN FIGURES AT LEFT. GUIDE ASS'Y(S) AND/OR KEEPER ASS'Y(S) MAY BE REPLACED BY HOLES MADE IN YOUR DOOR AND/OR FRAME

ASSEMBLY INSTRUCTIONS

1. ATTACH THE KEEPER ASS'Y(S) AND GUIDE ASS'Y(S) TO FRAME AND DOOR
2. PASS NOSE END OF ROD THROUGH GUIDE AND ALIGN THE HOLE IN THE ROD WITH THE STUD IN THE ACTUATOR. POSITION ROD ON STUD. COMPLETE LATCH ASS'Y.

PROPRIETARY ITEM—EXCEPT FOR USES EXPRESSLY GRANTED IN WRITING, INFORMATION DISCLOSED HEREON IS CONFIDENTIAL AND ALL RIGHTS, PATENT AND OTHERWISE, ARE RESERVED BY SOUTHCO, INC.

TOLERANCE UNLESS OTHERWISE NOTED
DECIMALS ± — FRACTIONS ± — ANGLES ± —

DRAWING NUMBER
J-A5-21-10