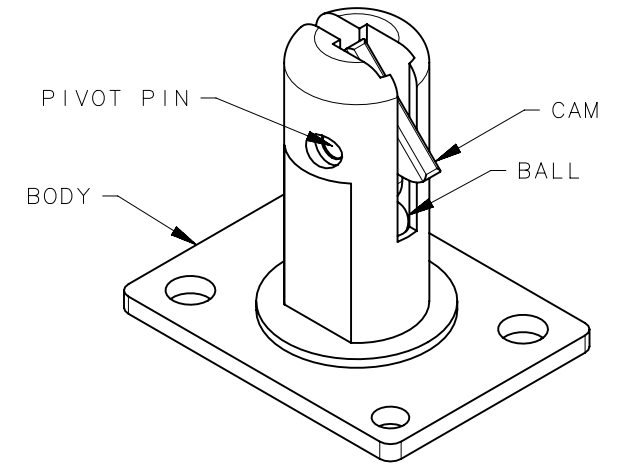
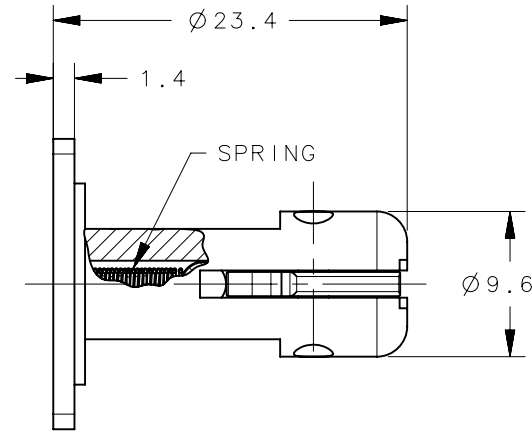
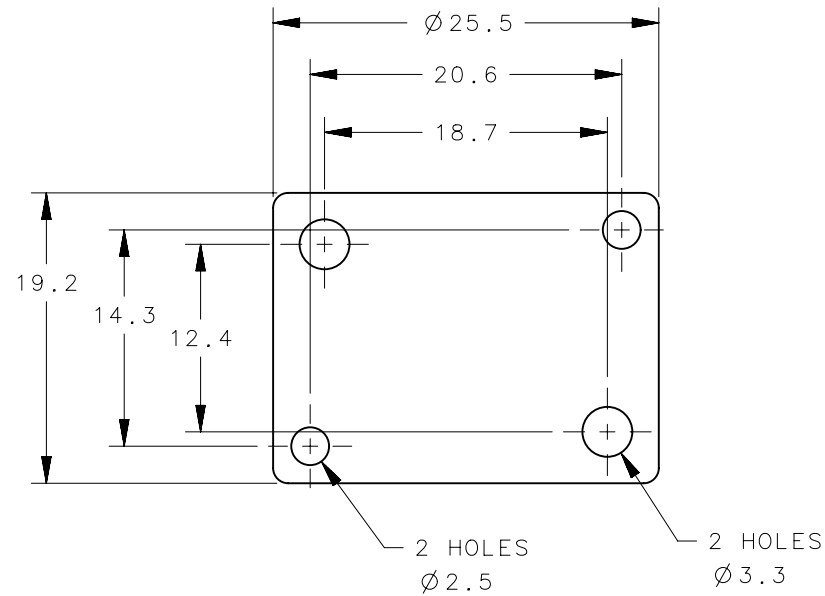


REVISION HISTORY			
REV	DATE	BY	DESCRIPTION
B	24MAR2011	ACH/SM	PRN: P2011-0393



NOTES:

A. SAME AS STANDARD A4-20-501-10 EXCEPT WITH SPRING AND PLASTIC DISK REMOVED

NO.	PART NUMBER	QTY	TYPE OF COMPONENT	MATERIAL	FINISH	GENERAL NOTES
	A4-99-141	1	ASSEMBLY	-	-	
5		1	SPRING	STAINLESS STEEL	-	
4		1	BODY	ZINC ALLOY DIE CAST	NATURAL	
3		1	PIN	STAINLESS STEEL	POLISHED	
2		1	CAM	STAINLESS STEEL	POLISHED	
1		1	BALL	STAINLESS STEEL	POLISHED	

THIRD ANGLE PROJECTION		 CONNECT • CREATE • INNOVATE			
MILLIMETERS [IN]					
TOLERANCES UNLESS OTHERWISE NOTED		DESCRIPTION A4 PIN LATCH ASSEMBLY			
ALL DIMENSIONS WITHOUT TOLERANCES ARE FOR REFERENCE ONLY.		SIZE A4	SYSTEM NX	DWG NO. J-A4-99-141	
PER ASME Y14.5M-1994		DRAWN BY JDH	DATE 31AUG2008	SCALE 2:1	SHEET 1 OF 1

PROPRIETARY ITEM
EXCEPT FOR USES EXPRESSLY GRANTED IN WRITING, INFORMATION DISCLOSED HEREON IS CONFIDENTIAL AND ALL RIGHTS, PATENT AND OTHERWISE, ARE RESERVED BY SOUTHCO, INC.