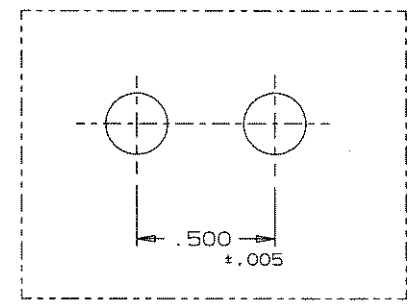
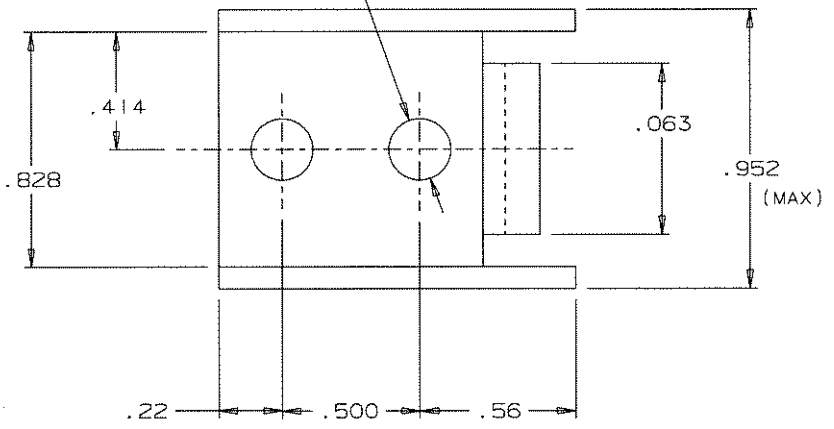


REV.	DATE	BY-CHKD	REVISIONS	PART No.	MATERIAL	FINISH			
	23JUN99			97-67-103-11	1010 STEEL	SEE NOTE "A"			
				97-67-103-15	1010 STEEL	SEE NOTE "B"			
				97-67-103-24	304 STAINLESS STEEL	PASSIVATED			

NOTE "A": ZINC PLATED PLUS BRIGHT CHROMATE DIP.
 NOTE "B": BLACK POWDER COAT.

Ø .207 (2 HOLES)
 .200 MIN. DIA. (AFTER FINISH)



PANEL PREPARATION

