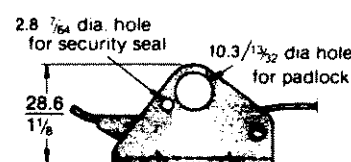
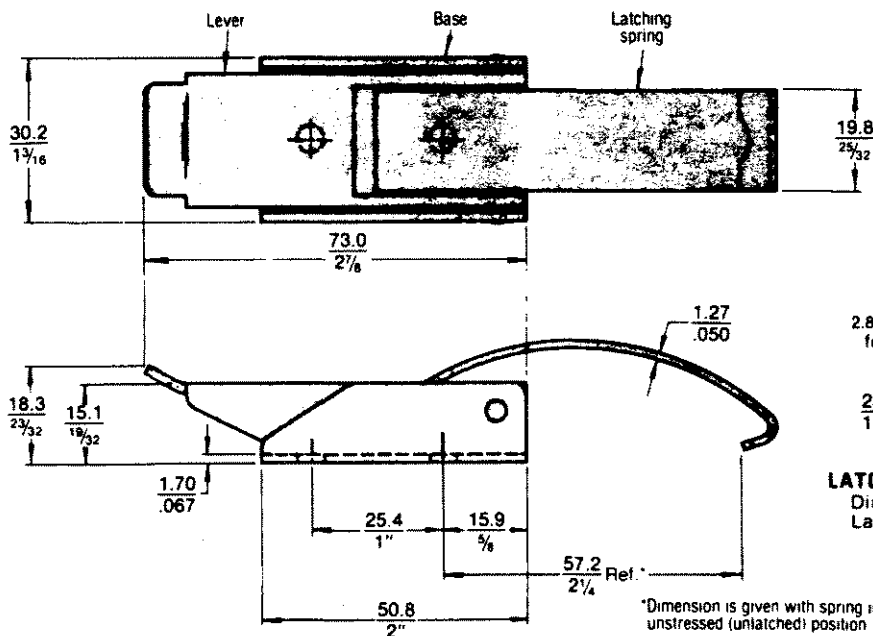


LATCH BODY STYLE	ASSEMBLY PART NUMBERS -- According to KEEPER style			
	WITH KEEPER STYLE "C"		WITH KEEPER STYLE "E"	LATCH ONLY (No Keeper)
	With 2 mounting holes	Button type (single hole)	One mounting hole & one lug	
STANDARD	97-60-121-15	97-60-123-15	97-60-124-15	97-60-120-15
WITH SECURITY FEATURES	97-60-321-15	97-60-323-15	97-60-324-15	97-60-320-15

MATERIAL and FINISH

Lever and base: steel, black powder coating.
Latching spring: spring steel, black powder coating.
Pins: stainless steel, black powder coating.



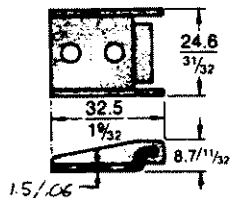
LATCH BODY WITH SECURITY FEATURES
Dimensionally identical with standard Latch body (left) except as shown.

*Dimension is given with spring in unstressed (unlatched) position

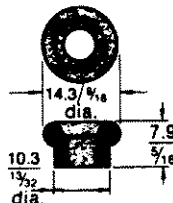
KEEPERS

Keepers are available with a choice of mounting variations.

Keeper style "C" -- Keeper is concealed (covered by spring) when latched.



Flat type
Two mounting holes
Mount with No. 10 screws or 3/16 dia. rivets



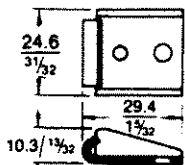
Button type
Single mounting hole
Mount with No. 10 flat head screw.

MATERIAL and FINISH

1010 Steel, black powder coating.
(for flat keepers shown)

MATERIAL and FINISH
Steel, case hardened.
Zinc alloy plate, black chromate plus sealer.

Keeper style "E" -- Keeper is exposed (beyond end of spring) when latched.



Flat type
One hole & one lug.
Mount with No. 10 screw or 3/16 dia. rivet.

MATERIAL and FINISH
1010 Steel, black powder coating.
(for flat keepers shown)

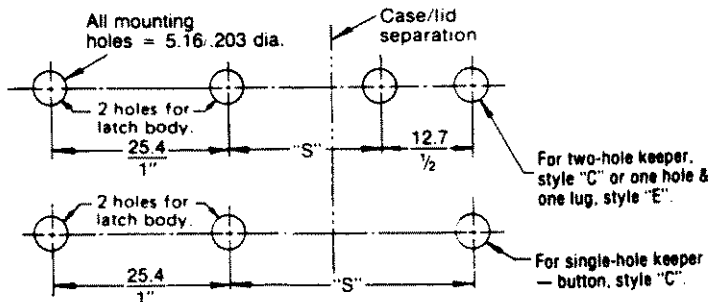
PANEL PREPARATION AND INSTALLATION

The table below shows "S" dimension for each keeper style.

The location of the latch assembly in relation to the separation line between your case and lid should be selected to suit your requirements.

DIMENSION "S" according to KEEPER style.

KEEPER STYLE "C"			KEEPER STYLE "E"
Flat type Two mounting holes	Button type Single mounting hole	Flat type One hole & one lug.	
39.7 (1 5/8)	57.2 (2 1/4)	69.9 (2 3/4)	



For two-hole keeper, style "C" or one hole & one lug, style "E".

For single-hole keeper -- button, style "C".

