

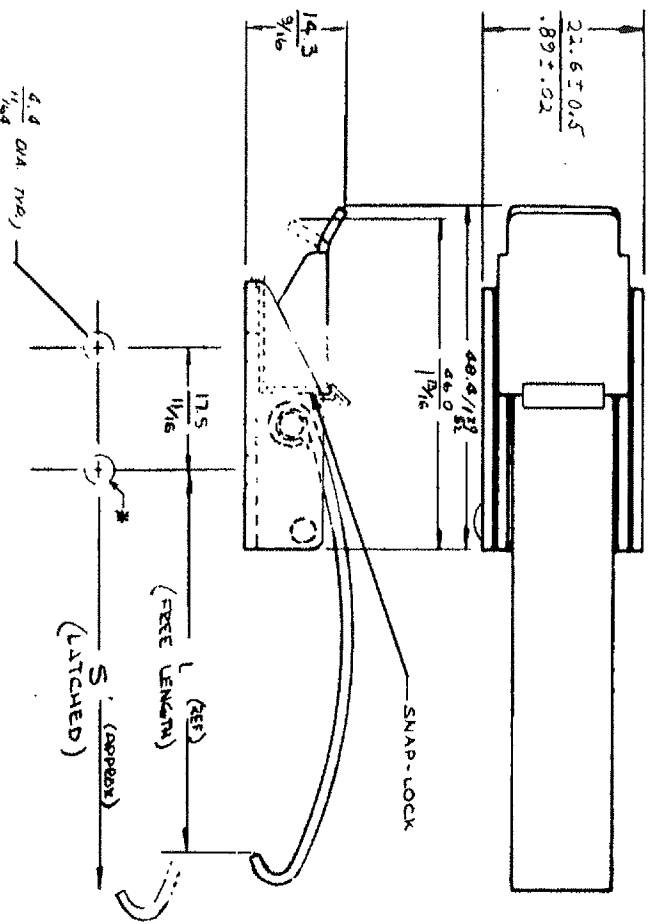


**No 97 DRAW CATCH - MOUNTING SPECIFICATIONS**  
 ASSEMBLIES W/ SNAP-LOCK, NO KEEPER W/ HOOKED SPRINGS

DATE	DRAWN	CNKO	SCALE	DRAWING NUMBER
4-9-87	SEE		NTS	J-97-50-25

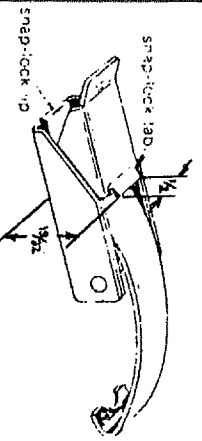
LEVER STYLE	SPRING RATING	SPRING LENGTH	PART NUMBER	L	S
ACTUATING TAB UP	LIGHT DUTY	SHORT	97-50-110-25	29.4 / 1 1/8	31.8 / 1 1/4
	HEAVY DUTY	MEDIUM	97-50-120-25	42.1 / 1 3/8	44.4 / 1 3/4
		LONG	97-50-130-25	54.8 / 2 1/8	57.1 / 2 1/4
ACTUATING TAB DOWN	HEAVY DUTY	SHORT	97-50-150-25	29.4 / 1 1/8	31.8 / 1 1/4
		MEDIUM	97-50-160-25	42.1 / 1 3/8	44.4 / 1 3/4
		LONG	97-50-170-25	54.8 / 2 1/8	57.1 / 2 1/4
HEAVY DUTY	HEAVY DUTY	SHORT	97-50-210-25	29.4 / 1 1/8	31.8 / 1 1/4
		MEDIUM	97-50-220-25	42.1 / 1 3/8	44.4 / 1 3/4
		LONG	97-50-230-25	54.8 / 2 1/8	57.1 / 2 1/4
HEAVY DUTY	HEAVY DUTY	SHORT	97-50-250-25	29.4 / 1 1/8	31.8 / 1 1/4
		MEDIUM	97-50-260-25	42.1 / 1 3/8	44.4 / 1 3/4
		LONG	97-50-270-25	54.8 / 2 1/8	57.1 / 2 1/4

PART NUMBER SUFFIX - INDICATES MATERIAL & FINISH  
 -25 ~ LEVER BASE AND SPRING - STEEL; PIN & RIVET - STAIN, STEEL; BLACK ORGANIC COATING  
 SNAP LOCK - STEEL, ZINC PLATE PLUS BLACK ORGANIC COATING



NOTE ~ SNAP-LOCK SHIPPED UNASSEMBLED  
 PART No. 97-58-101-11

\* Head Height of Mounting Screws in these holes (under spring support) must not exceed .105" (E.G. SLOTTED PIN HEAD).



To install  
 While installing, catch base position turned down lip of snap-lock against rear edge of base to align mounting holes. Insert mounting screw or rivet through both parts.  
 To open, push snap-lock tab forward and lift latch lever.  
 To close, just push lever back down, snap-lock will spring to locked position.

REV C / 02JUL2016 / P2015-1306 / CMS/NJF

MM  
 INCH

REV A 5-22-90 RHP PRAI 97-156  
 REV B 12 JAN 93 JC PRMS-1-03

PROPRIETARY ITEM - EXCEPT FOR USES EXPRESSLY GRANTED IN WRITING, INFORMATION DISCLOSED HEREON IS CONFIDENTIAL AND ALL RIGHTS, PATENT AND OTHERWISE, ARE RESERVED BY SOUTHCO, INC.

DRAWING NUMBER  
 J-97-50-25