

southco®

PROPRIETARY ITEM - EXCEPT FOR USES EXPRESSLY GRANTED IN WRITING INFORMATION DISCLOSED HEREON IS CONFIDENTIAL AND ALL RIGHTS PATENT AND OTHERWISE ARE RESERVED BY SOUTHCO, INC.

No. 85 KNURLED HEAD STUD

DATE

DRAWN

CHKD

SCALE

DRAWING NUMBER

5-8-57

ESK

ASK

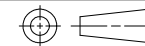
1.5:1

J-85-8-1

REV	DATE	DRAWN/CHKD	DESCRIPTION	PART NUMBER	U	L	F	T	PART NUMBER	U	L	F	T
E	16DEC96	JAC	PRN: S-1-06A	85-13-060-XX	.165	.320	.505	1.192	85-13-540-XX	.645	.800	.985	1.672
F	21FEB2005	RLR/MDY	PRN: P2005-0176	85-13-080-XX	.185	.340	.525	1.212	85-13-560-XX	.665	.820	1.005	1.692
G	03DEC2015	CMS/JCK	PRN: P2015-2437	85-13-100-XX	.205	.360	.545	1.232	85-13-580-XX	.685	.840	1.025	1.712
				85-13-120-XX	.225	.380	.565	1.252	85-13-600-XX	.705	.860	1.045	1.732
				85-13-140-XX	.245	.400	.585	1.272	85-13-620-XX	.725	.880	1.065	1.752
				85-13-160-XX	.265	.420	.605	1.292	85-13-640-XX	.745	.900	1.085	1.772
				85-13-180-XX	.285	.440	.625	1.312	85-13-660-XX	.765	.920	1.105	1.792
				85-13-200-XX	.305	.460	.645	1.332	85-13-680-XX	.785	.940	1.125	1.812
				85-13-220-XX	.325	.480	.665	1.352	85-13-700-XX	.805	.960	1.145	1.832
				85-13-240-XX	.345	.500	.685	1.372	85-13-720-XX	.825	.980	1.165	1.852
				85-13-260-XX	.365	.520	.705	1.392	85-13-740-XX	.845	1.000	1.185	1.872
				85-13-280-XX	.385	.540	.725	1.412	85-13-760-XX	.865	1.020	1.205	1.892
				85-13-300-XX	.405	.560	.745	1.432	85-13-780-XX	.885	1.040	1.225	1.912
				85-13-320-XX	.425	.580	.765	1.452	85-13-800-XX	.905	1.060	1.245	1.932
				85-13-340-XX	.445	.600	.785	1.472	85-13-820-XX	.925	1.080	1.265	1.952
				85-13-360-XX	.465	.620	.805	1.492	85-13-840-XX	.945	1.100	1.285	1.972
				85-13-380-XX	.485	.640	.825	1.512	85-13-860-XX	.965	1.120	1.305	1.992
				85-13-400-XX	.505	.660	.845	1.532	85-13-880-XX	.985	1.140	1.325	2.012
				85-13-420-XX	.525	.680	.865	1.552	85-13-900-XX	1.005	1.160	1.345	2.032
				85-13-440-XX	.545	.700	.885	1.572	85-13-920-XX	1.025	1.180	1.365	2.052
				85-13-460-XX	.565	.720	.905	1.592	85-13-940-XX	1.045	1.200	1.385	2.072
				85-13-480-XX	.585	.740	.925	1.612	85-13-960-XX	1.065	1.220	1.405	2.092
				85-13-500-XX	.605	.760	.945	1.632	85-13-980-XX	1.085	1.240	1.425	2.112
				85-13-520-XX	.625	.780	.965	1.652	85-13-1000-XX	1.105	1.260	1.445	2.132

INCHES

ALL DIMENSIONS WITHOUT TOLERANCES ARE FOR REFERENCE ONLY.



THIRD ANGLE PROJECTION

A
PAPER
SIZE

NOTE:

A. "XX" DESIGNATES MATERIAL & FINISH:

-16: LOW CARBON STEEL, CASE HARDENED,
ZINC PLATED, CHROMATE PLUS
SEALER

-20: STAINLESS STEEL, PASSIVATED

