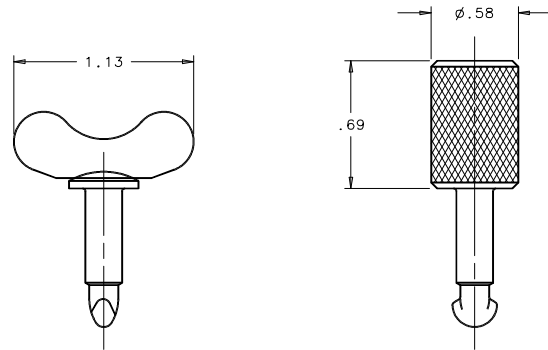


REV.	DATE	BY-CHKD	REVISIONS	OUTER PANEL THICKNESS	*L * REF.	OVAL HEAD ASS'Y PART NUMBER	WING HEAD ASS'Y PART NUMBER	KNURL HEAD ASS'Y PART NUMBER
D	05MAY2006	RLR/AJH	PRN: P2006-0648	.050-.069	.84	84-50-060-10	84-50-060-20	-
E	10FEB2012	CMS/JCK	PRN: P2012-0195	.070-.089	.86	84-50-080-10	84-50-080-20	-
F	11DEC2013	CMS/BGL	PRN: P2013-2467	.130-.149	.92	-	84-50-140-20	84-50-140-30
G	31MAY2016	JPK/CMS	PRN: P2016-0963	.150-.169	.94	84-50-160-10	84-50-160-20	84-50-160-30
				.170-.189	.96	84-50-180-10	84-50-180-20	84-50-180-30
				.190-.209	.98	-	84-50-200-20	84-50-200-30

**NOTES:**

- A. AN ASSEMBLY CONSISTS OF A STUD, SLEEVE, STATIONARY CAM AND MOVING CAM.
- B. TO ASSEMBLE--ARRANGE STUD, OUTER PANEL, SLEEVE, STATIONARY CAM AND MOVING CAM AS SHOWN. BRING COMPONENTS TOGETHER TIGHTLY USING TOOL NO. 41-0-12125-11 ON CHAMFER OF THE MOVING CAM. TWIST STUD QUARTER TURN CLOCKWISE TO LOCK IT INTO MOVING CAM SEAT.
- C. TOOL MUST BE ORDERED SEPARATELY BY PART NUMBER.
- D. MATERIAL AND FINISH:

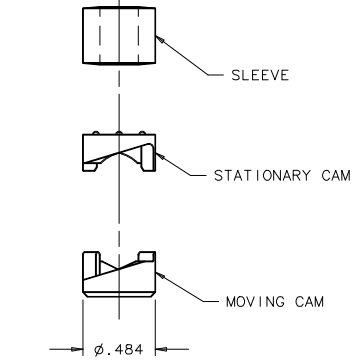
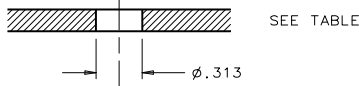
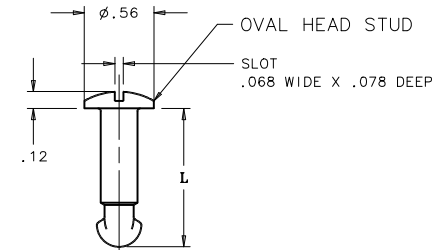
WING AND SLOTTED HEAD STUDS: 1008 STEEL  
 KNURLED HEAD STUD: LOW CARBON STEEL  
 ALL STUDS: ZINC PLATE, CHROMATE PLUS SEALER  
 SLEEVE: RUBBER IR/BR BLEND, BLACK  
 STATIONARY CAM: ACETAL, BLACK  
 MOVING CAM: DIE CAST ZINC, BLACK ORGANIC COATING



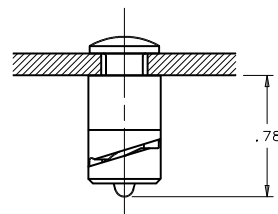
WING HEAD STUD

KNURL HEAD STUD

**UNASSEMBLED**

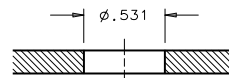


**ASSEMBLED**

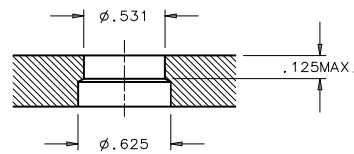


**FRAME PREPARATION**

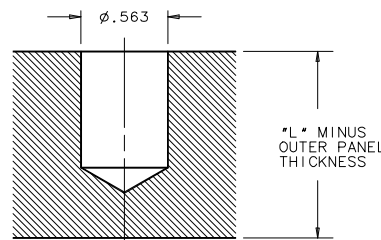
WHEN FRAME THICKNESS IS .125 OR LESS



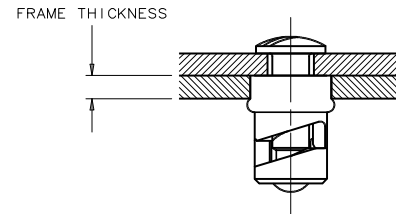
WHEN FRAME THICKNESS IS GREATER THAN .125



**BLIND HOLE APPLICATION**



**LOCKED**



INSTALLATION TOOL AT HALF SCALE  
(SEE NOTE C)

