

southco®

PROPRIETARY ITEM - EXCEPT FOR USES EXPRESSLY GRANTED IN WRITING INFORMATION DISCLOSED HEREON IS CONFIDENTIAL AND ALL RIGHTS PATENT AND OTHERWISE ARE RESERVED BY SOUTHCO, INC.

SOUTHCO No.81 RECEPTACLE ASSEMBLY FOR ULTRASONIC INSTALLATION.

DATE 15FEB84

DRAWN ACZ

CHKD

SCALE 1.5:1

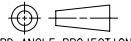

DRAWING NUMBER

J-81-35-310-55

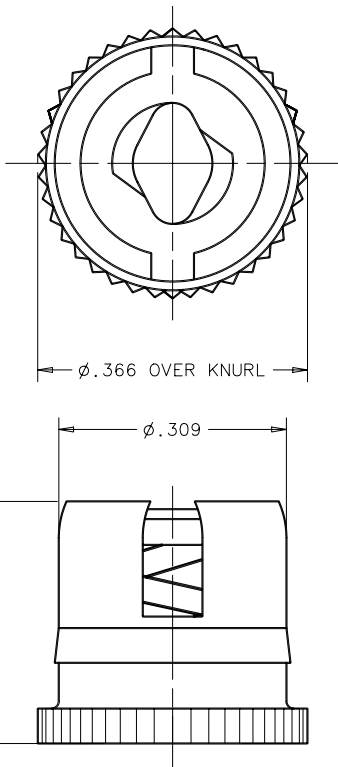
REV	DATE	DRAWN/CHKD	DESCRIPTION	ITEM	PART NUMBER	MATERIAL	FINISH
H	06MAR1997	SWD/	PRN: 81-162	ASSEMBLY	81-35-310-55	-	-
I	25AUG1998	IJO/CHW	PRN: 81-178	RECEPTACLE		CASE HARDENED STEEL	SEE NOTE "A"
J	11AUG1993	JDK/CHW	PRN: 81-178B	SHELL		STEEL	SEE NOTE "A"
K	18AUG1999	JDK/CHW	PRN: 81-186	SPRING		302 STAINLESS STEEL	PASSIVATE
L	27JUN2005	BRP/RLR	PRN: P2005-0743	RETAINER		302 STAINLESS STEEL	PASSIVATE

INCHES

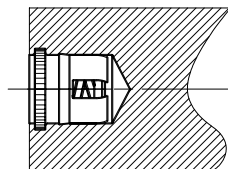
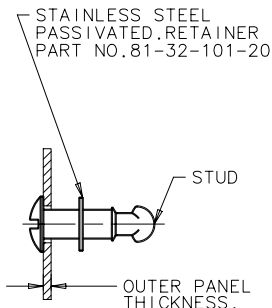
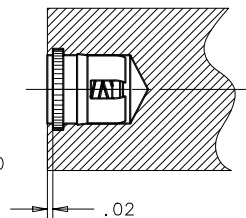
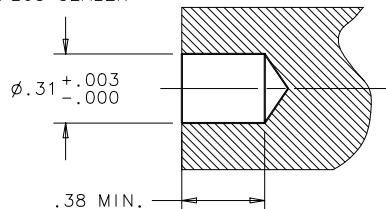
ALL DIMENSIONS WITHOUT TOLERANCES ARE FOR REFERENCE ONLY.

THIRD ANGLE PROJECTION PAPER SIZE



NOTE "A" - ZINC PLATE, CHROMATE PLUS SEALER



INSTALLATION INSTRUCTIONS

1. PREPARE HOLE AS SHOWN.
2. ULTRASONICALLY PRESS RECEPTACLE ASSEMBLY IN TO A DEPTH OF .020 BELOW SURFACE. RECEPTACLE MAY BE INSERTED TO FLUSH WITH SURFACE, BUT OUTER PANEL WILL STAND OFF BY THE THICKNESS OF THE RETAINER (.015). SLOT MAY BE POSITIONED AS DESIRED; WHEN LOCKED UP, SLOT IN STUD WILL BE PERPENDICULAR WITH SLOT IN RECEPTACLE.
3. TO SELECT THE PROPER GRIP STUD, ADD A CONSTANT OF .050, TO THE OUTER PANEL THICKNESS.