

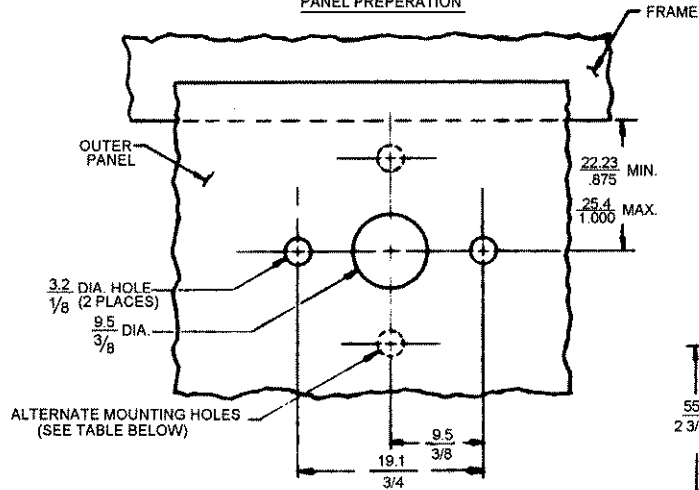


SOUTHCO No. 68 PAWL FASTENER ASSEMBLY

DATE	DRAWN	CHKD	SCALE	DRAWING NUMBER
8-31-78	ACZ		NTS	J-68-50-301-10

REV. LET.	DATE	BY	CHKD	REVISIONS	ITEM	COMPONENT	PART NUMBER	MATERIAL	FINISH	R.S.	DATE	APP.
G	3-3-88	MIK	RJB	PRN 62-55 (DAC. PAWL)	ASSEMBLY		68-50-301-10			A		
H	6-7-89	CLB		PRN: 68-64	HANDLE ASSY					B		
I	2-15-91	JAD		PRN: 68-71		PIN		STAINLESS STEEL	NATURAL	C		
J	1-22-93	JGK		PRN: 68-79		SHAFT		STEEL	DACROTIZED™	D		
K	5-MAR-93	VTB		PRN: S-1-03		FERRULE		DIE CAST ZINC	CHEM. PROTECTIVE FILM			
						T. BAR		STEEL	ZINC PLATE - BRIGHT			
						PAWL		STEEL	DACROTIZED™			
						"U" BENT WASHER		STEEL	ZINC PLATE - YELLOW			
						HEX NUT		STEEL	DACROTIZED™			
						TAB WASHER		STEEL	ZINC PLATE - YELLOW			
						ESCUTCHEON PLATE		DIE CAST ZINC	CHEM. PROTECTIVE FILM			
						ACTUATOR		STEEL	ZINC PLATE - YELLOW			

PANEL PREPERATION



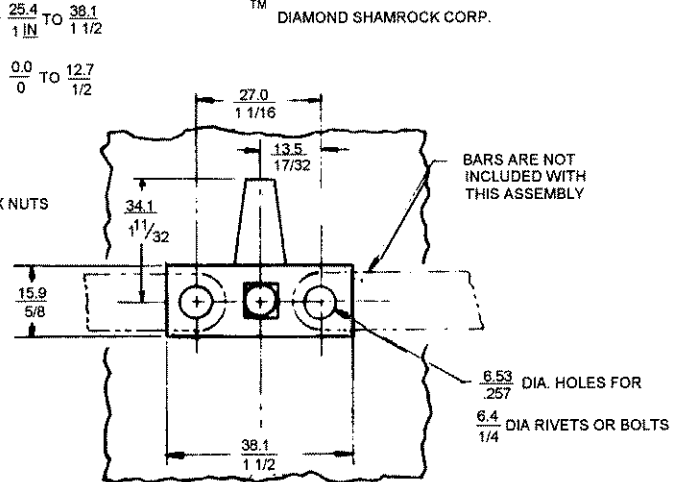
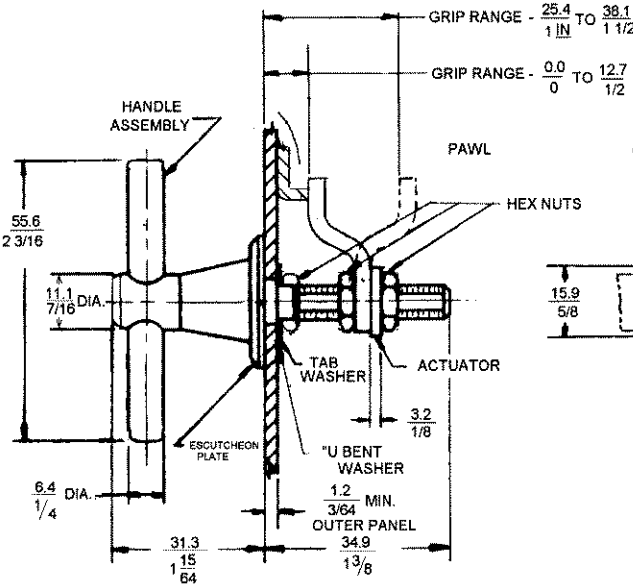
NOTE : FASTENER SHIPPED UNASSEMBLED
PACKAGED ONE UNIT PER BAG.

WEIGHT PER ASSEMBLY (LBS) - 0.19

T - IS PERPENDICULAR TO EDGE OF OUTER PANEL WHEN
LATCH IS IN LOCKED POSITION. (T-BAR IN LINE WITH PANEL)
ORIENTATION OF MOUNTING HOLES WITH RESPECT TO THE EDGE OF
THE OUTER PANEL DETERMINES TYPE 'A' OR TYPE 'B' OPERATION.

TYPE 'A' OPERATION - COUNTERCLOCKWISE TO OPEN MOUNTING HOLES PERPENDICULAR TO EDGE OF PANEL
TYPE 'B' OPERATION - CLOCKWISE TO OPEN MOUNTING HOLES PARALLEL TO EDGE OF PANEL

ITEM	COMPONENT	PART NUMBER	MATERIAL	FINISH
PAWL			STEEL	DACROTIZED™
"U" BENT WASHER			STEEL	ZINC PLATE - YELLOW
HEX NUT			STEEL	DACROTIZED™
TAB WASHER			STEEL	ZINC PLATE - YELLOW
ESCUTCHEON PLATE			DIE CAST ZINC	CHEM. PROTECTIVE FILM
ACTUATOR			STEEL	ZINC PLATE - YELLOW



INSTALLATION INSTRUCTIONS

1. SLIP ESCUTCHEON PLATE OVER SHAFT AND INSERT SHAFT AND STOP PINS INTO HOLES IN PANEL.
2. SLIP "U" BENT WASHERS, THEN TAB WASHER OVER SHAFT, RUN NUT UP TO PANEL THEN BACK OFF TO OBTAIN SMOOTH OPERATION. BEND TABS UP AGAINST FLATS ON NUT.
3. RUN SECOND NUT ONTO SHAFT, THEN SLIDE PAWL AND ACTUATOR ON SHAFT (PLACEMENT OF PAWL AND ACTUATOR MAY HAVE TO BE REVISED TO OBTAIN MAXIMUM GRIP) ADD THE THIRD NUT, THEN ADJUST TO CORRECT GRIP AND TIGHTEN NUTS.

MILLIMETER/INCH MILLIMETER INCH

PROPRIETARY ITEM - EXCEPT FOR USES EXPRESSLY GRANTED IN WRITING, INFORMATION DISCLOSED HEREON IS CONFIDENTIAL AND ALL RIGHTS, PATENT AND OTHERWISE, ARE RESERVED BY SOUTHCO, INC.

TOLERANCE UNLESS OTHERWISE NOTED
METRIC MM - TWO PLACE (XX) ± — ONE PLACE (X) ± —
INCH - DECIMALS ± — FRACTIONS ± — ANGLES ± —

DRAWING NUMBER
J-68-50-301-10