

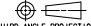

NOTES:

- A. FASTENER SHIPPED UNASSEMBLED, PACKAGED ONE UNIT PER BAG, WEIGHT PER ASSEMBLY (LBS)-0.82
- B. PIN: STAINLESS STEEL, NATURAL SHAFT, BEARING WASHER, SPRING WASHER, BASE PLATE, HEX NUTS, ACTUATOR PAWL AND MOUNTING SCREWS: STEEL, ZINC FLAKE COATING, FERRULE & ESCUTCHEON PLATE: DIE CAST ZINC, BRIGHT CHROME
HANDLE SEGMENTS: STEEL, BRIGHT CHROME

southco

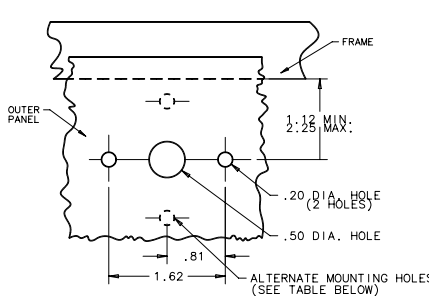
PROPRIETARY ITEM - EXCEPT FOR USES EXPRESSLY GRANTED IN WRITING INFORMATION DISCLOSED HEREIN IS CONFIDENTIAL AND ALL RIGHTS, PATENT AND OTHERWISE ARE RESERVED BY SOUTHCO, INC.

NO. 68 PAWL FASTENER-ASSEMBLY

DATE	DRAWN	CHKD	SCALE	DRAWING NUMBER
8-31-78	ACZ		3:4	J-68-70-302-20
				INCHES
				ALL DIMENSIONS WITHOUT TOLERANCES ARE FOR REFERENCE ONLY.
				
			THIRD ANGLE PROJECTION	B PAPER SIZE

REV	DATE	DRAWN/CHKD	DESCRIPTION	PART NUMBER	MATERIAL	FINISH
G	4-20-88	JSS/	PRN: 62-264 (SEE REC. PRINT)	68-70-302-20	SEE NOTE B	SEE NOTE B
H	12-6-88	JSS/	PRN: 68-61			
I	6-7-89	CLB/	PRN: 68-64			
J	22JAN1993	JGR/	PRN: 68-79			
K	5MAR1993	UTB/	PRN: S-1-03			
L	22APR2005	BRP/RLR	PRN: P2005-0594			

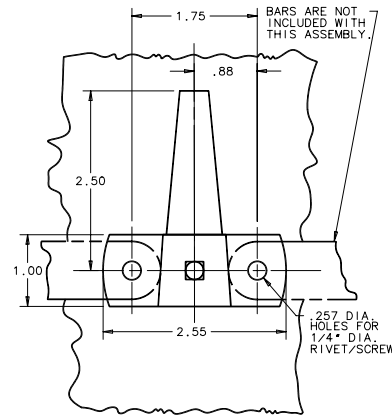
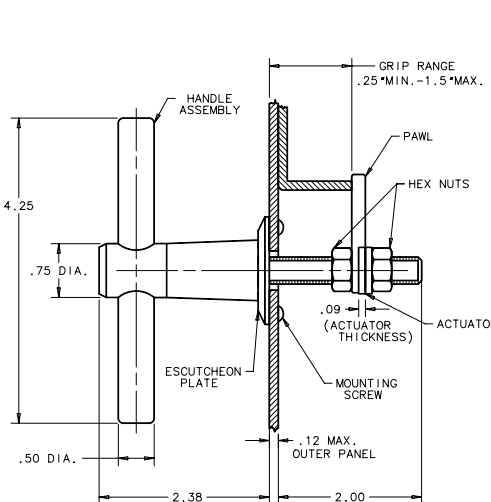
PANEL PREPARATIONS



T-BAR IS PERPENDICULAR TO EDGE OF OUTER PANEL WHEN LATCH IS IN LOCKED POSITION. (T-BAR IN LINE WITH PAWL) ORIENTATION OF MOUNTING HOLES WITH RESPECT TO THE EDGE OF THE OUTER PANEL DETERMINES TYPE "A" OR TYPE "B" OPERATION.

TYPE "B" OPERATION: COUNTERCLOCKWISE TO OPEN
MOUNTING HOLES PARALLEL TO EDGE OF PANEL

TYPE "A" OPERATION: CLOCKWISE TO OPEN
MOUNTING HOLES PERPENDICULAR TO EDGE OF PANEL



INSTALLATION INSTRUCTIONS

INSTALL HANDLE ASSEMBLY FROM OUTSIDE OF DOOR; ALIGN HOLES IN ESCUTCHEON PLATE WITH HOLES IN PANEL AND SECURE WITH TWO NO. 10-32 SCREWS PROVIDED. INSTALL PAWL ASSEMBLY AS SHOWN IN DRAWING (PLACEMENT OF PAWL AND ACTUATOR MAY HAVE TO BE REVERSED TO OBTAIN MAXIMUM GRIP). MOVE TO DESIRED GRIP POSITION AND TIGHTEN HEX NUTS AGAINST PAWL ASSEMBLY WITH TWO 11/6" OPEN END WRENCHES.