

**southco®**

PROPRIETARY ITEM - EXCEPT FOR USES EXPRESSLY GRANTED IN WRITING INFORMATION DISCLOSED HEREON IS CONFIDENTIAL AND ALL RIGHTS PATENT AND OTHERWISE ARE RESERVED BY SOUTHCO, INC.

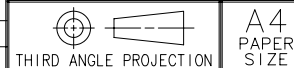
No. 64 PADDLE LATCH

DATE	DRAWN	CHKD	SCALE	DRAWING NUMBER
15NOV2001	VNI		1.5:1	J-64-01-10

REV	DATE	DRAWN/CHKD	DESCRIPTION	ITEM	PART NUMBER	MATERIAL	FINISH
A	16NOV2001	VNI	PRN: P2001-0661	ASSEMBLY	64-01-10	-	-
B	22NOV2002	RLR/VNI	PRN: P2002-0896	CUP	-	STAINLESS STEEL	SEE NOTE A
C	07FEB2004	VNI/RLR	PRN: P2004-0125	PADDLE	-	STAINLESS STEEL	SEE NOTE A
D	01APR2004	AAB/RLR	PRN: P2004-0337	SLIDE	-	GLASS REINFORCED NYLON, UL94 V0 RATED	BLACK
E	23FEB2005	MDY/RLR	PRN: P2005-0248	LEVER	-	GLASS REINFORCED NYLON, UL94 V0 RATED	BLACK
F	06SEP2005	RLR/MJS	PRN: P2005-1169	SPRING	-	STAINLESS STEEL	PASSIVATED
				RIVET	-	STAINLESS STEEL	PASSIVATED
				TAPPED RIVET	-	STAINLESS STEEL	NATURAL
				BRACKET	-	STAINLESS STEEL	PASSIVATED
				SCREW/LOCKWASHER ASSEMBLY	-	STAINLESS STEEL	PASSIVATED

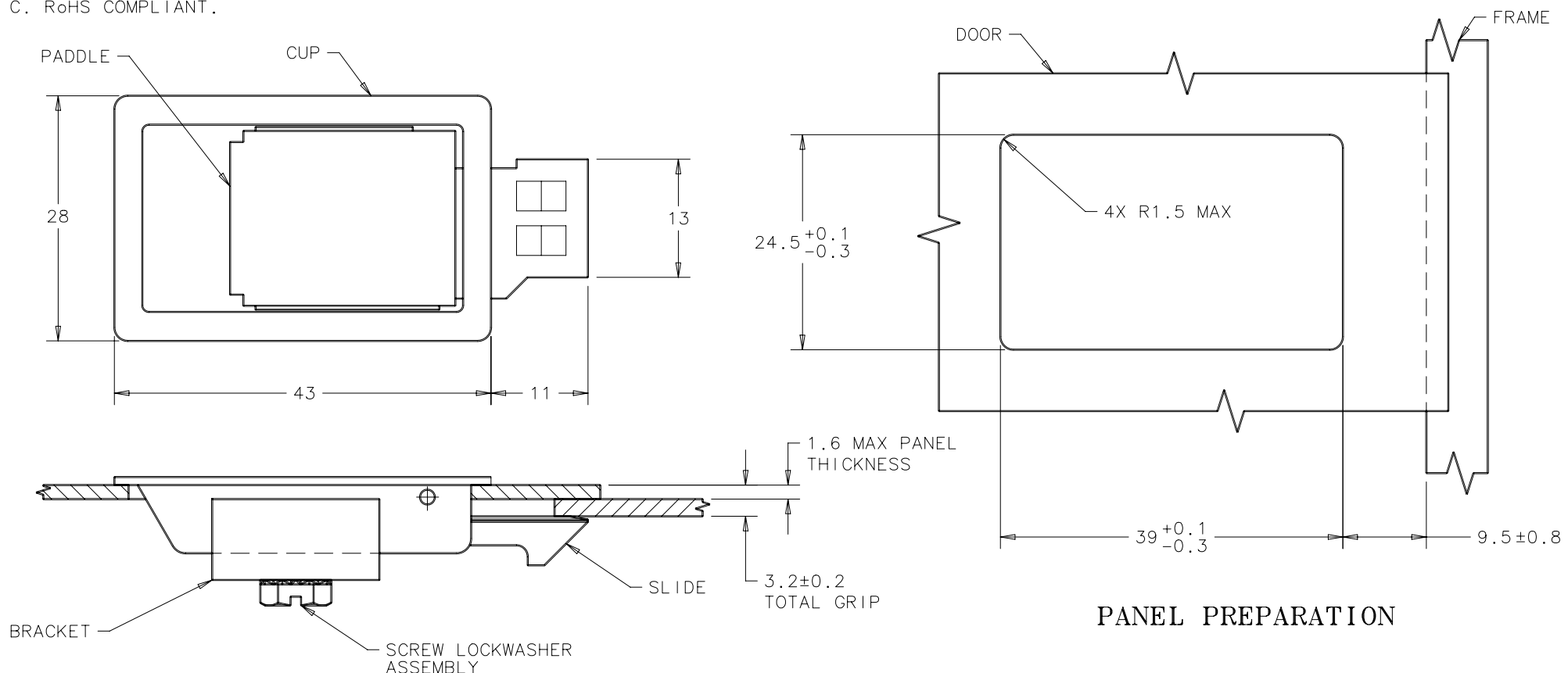
**MILLIMETERS**

ALL DIMENSIONS WITHOUT TOLERANCES ARE FOR REFERENCE ONLY.



NOTES:

- A. FINISH: BRUSHED PASSIVATED.
- B. SOUTHCO RECOMMENDS HAND TORQUING OF MOUNTING SCREW TO A VALUE LESS THAN OR EQUAL TO 0.9 N m, OR LATCH PERFORMANCE MAY BE AFFECTED.
- C. RoHS COMPLIANT.



**PANEL PREPARATION**