

southco®

PROPRIETARY ITEM - EXCEPT FOR USES EXPRESSLY GRANTED IN WRITING INFORMATION DISCLOSED HEREON IS CONFIDENTIAL AND ALL RIGHTS PATENT AND OTHERWISE ARE RESERVED BY SOUTHCO, INC.

No. 62-70 SERIES LATCH ASSEMBLY

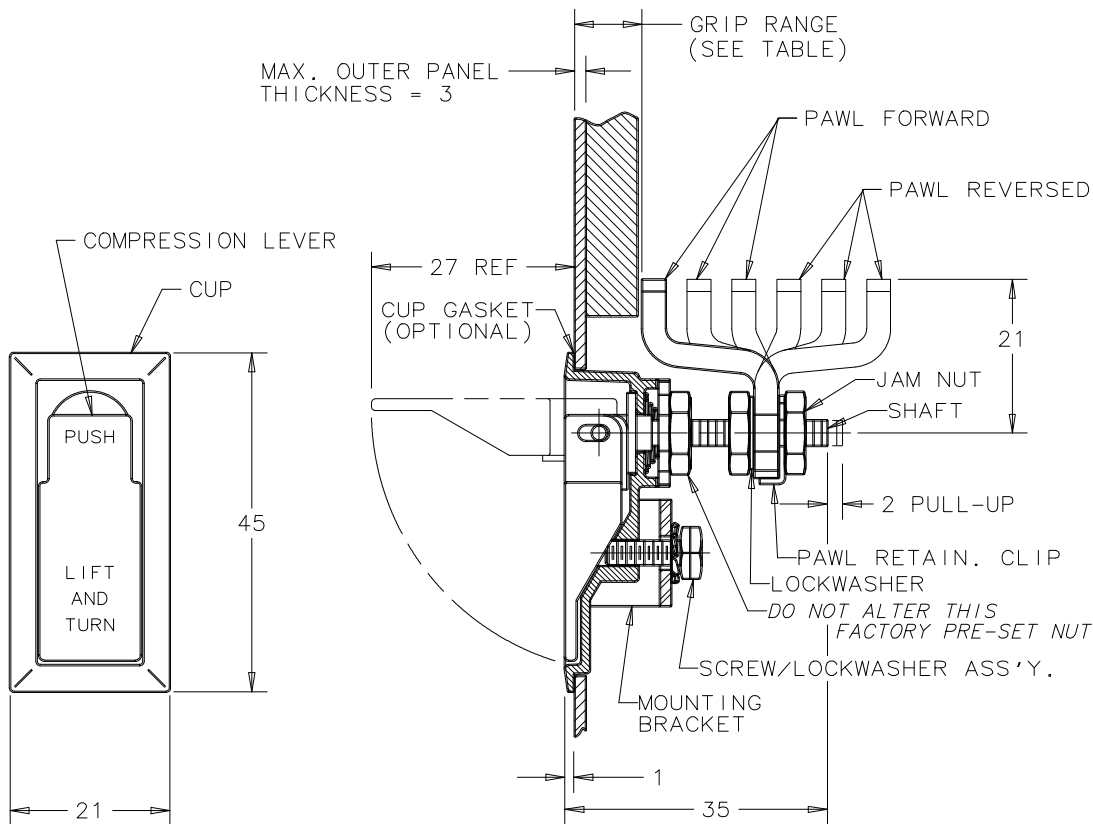
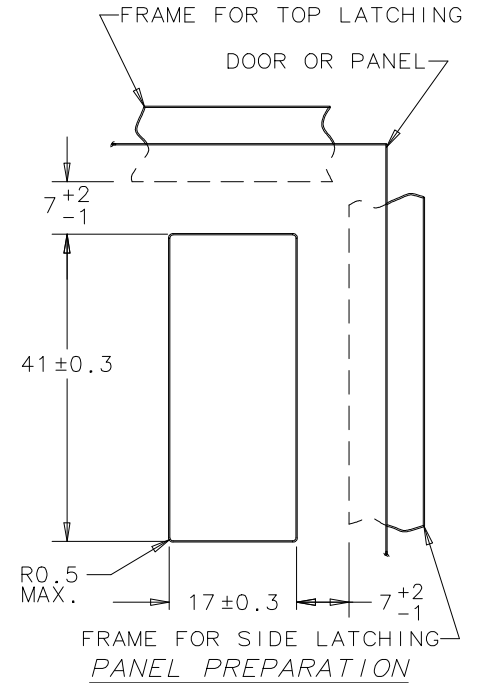
DATE	DRAWN	CHKD	SCALE	DRAWING NUMBER
04NOV92	JSS		1 : 1	J-62-70

REV.	DATE	DRAWN	REVISION
F	11MAY2001	JWJ/RJB	PRN:2001-0018
G	18JUN2012	CMS/JCK	PRN:2012-0796

FOR HANDLES WITHOUT LETTERING, ADD A -1 TO THE END OF THE PART NUMBER.
EXAMPLE: 62-70-21-1.

FOR AN ASSEMBLY WITH A DUST & MOISTURE SEAL, CHANGE THE FOURTH DIGIT OF THE PART NUMBER TO 4.
EXAMPLE: 62-74-21.

GRIP		ASSEMBLY PART NUMBER TABLE		
MIN	MAX	POLISHED CHROME	BRUSHED CHROME	BLACK POWDER COATED
4.5	10.5	62-70-11	62-70-12	62-70-15
10.5	16.5	62-70-21	62-70-22	62-70-25
16.5	22.5	62-70-31	62-70-32	62-70-35
22.5	28.5	62-70-31	62-70-32	62-70-35
28.5	34.5	62-70-21	62-70-22	62-70-25
34.5	40.5	62-70-11	62-70-12	62-70-15



NOTES

1. THREAD SIZE OF SHAFT IS M5 AND THE SCREW/ LOCKWASHER ASSEMBLY IS M4.
2. THICKER PANELS REQUIRE A LONGER SCREW/ LOCKWASHER COMBINATION (NOT SUPPLIED).
3. ASSEMBLE AS SHOWN AND ROTATE PAWL TO THE DESIRED LATCHING POSITION.
4. PAWL SHOULD BE ADJUSTED TO GRIP MEASUREMENT WITH THE DOOR OPEN AND THE HANDLE IN THE LATCHED POSITION. USE TWO WRENCHES TO TIGHTEN.

MATERIAL AND FINISH

COMPRESSION LEVER & CUP: DIE CAST ZINC, SEE TABLE.
SHAFT: STEEL, ZINC PLATE, BLACK CHROMATE PLUS SEALER.
CAM: 1010 STEEL, ZINC PLATE, PLUS SEALER OR WITH BLACK ORGANIC COATING.
PIN: 1112 STEEL, ZINC PLATED YELLOW.
WASHER: 1010 STEEL, ZINC PLATED BRIGHT OR BLACK OXIDE.
SPRINGS: 302 STAINLESS STEEL, PASSIVATED.
BEARING WASHER, PAWL, PAWL RETAINING CLIP & BRACKET: 1010 STEEL, ZINC PLATE, PLUS SEALER.
LOCKWASHER: SPRING STEEL, ZINC PLATE, PLUS SEALER.
NUTS & SCREW/LOCKWASHER ASS'Y.: LOW CARBON STEEL, ZINC PLATE, PLUS SEALER.

ALL DIMENSIONS ARE IN MILLIMETERS
ALL DIMENSIONS WITHOUT TOLERANCE ARE REFERENCE.
THIRD ANGLE PROJECTION DRAWING.

FOR DUST & MOISTURE SEALED MODELS:
CUP GASKET & SEALING WASHER: SYNTHETIC RUBBER, BLACK.